

Catálogo de accesorios Náuticos



2025

El Navegante

www.repuestoselnavegante.com



TACO Marine Flexible Black Vinyl Rub Rails



- Easy handling makes these rub rails a good choice for Do-It-Yourself boaters.
- Soft durometer provides cushion effect to absorb impact.
- Tight radius bending accomplished with minimal heating.

- Accepts flexible vinyl insert **750530** (V12-0810) and end cap **750706** (F90-0750BN).

Order No.	Mfg. No. / Description	List Price	
750302	(V11-0809BKA50-1) 1-1/16" H x 11/16" W x 50' L	\$210.99	F0-9674100

- Accepts flexible vinyl insert **750542** (V12-0003) and end cap **750718** (F90-0002).

Order No.	Mfg. No. / Description	List Price	
750326	(V11-3447BKA50-1) 1-1/4" H x 15/16" W x 50' L	\$295.99	F0-9170200

- Accepts flexible vinyl insert **750542** (V12-0003) and end cap **750720** (F90-0001).

Order No.	Mfg. No. / Description	List Price	
750330	(V11-2423BKA50-1) 1-7/8" H x 1-1/8" W x 50' L	\$489.89	F0-2924300
750340	(V11-2423BKA70-1) 1-7/8" H x 1-1/8" W x 70' L	\$634.39	F0-7044400

TACO Marine Semi-Rigid Frosty White Vinyl Rub Rail



- Soft durometer rub rail provides cushion effect to absorb impact.
- Tight radius bends require minimal heat.
- Accepts flex chrome insert V12-9809.
- Dimensions: 1-5/8" H x 3/4" W x 70' L.

Order No.	Mfg. No. / Description	List Price	
3445833	(V11-9811WCM70-2)	\$742.09	F0-6491500

TACO Marine Flexible Black Vinyl Inserts for Flexible Vinyl Rub Rails



- For use with flexible vinyl rub rails.
- Soft PVC insert provides cushion effect to absorb impact.

- Fits flexible vinyl rub rail **750302** (V11-0809).
- Diameter 1/4".
- Gauge 3/8".

Order No.	Mfg. No. / Description	List Price	
750530	(V120810BKA50) Length 50'	\$77.39	F0-7145000

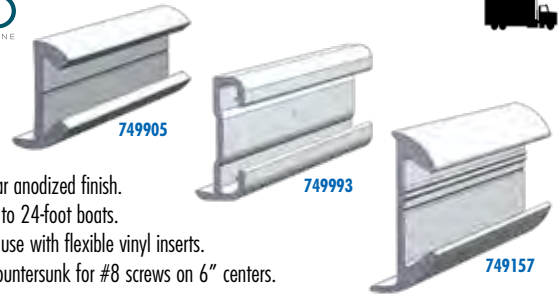
- Fits flexible vinyl rub rail **750330/750340** (V11-2423), **750326** (V11-3447) and (V11-4014).
- Diameter 1/2".

Order No.	Mfg. No. / Description	List Price	
750542	(V12-0003BKA70-1) Length 70'	\$114.19	F0-3997000

- Fits flexible vinyl rub rail (V11-0899) and (V11-3426).
- Diameter 3/4".
- Gauge 1/8".

Order No.	Mfg. No. / Description	List Price	
750566	(V120005BKA70) Length 70'	\$207.19	F0-3054100

TACO Marine Anodized Aluminum Rub Rails



- Polished, clear anodized finish.
- Ideal for 16- to 24-foot boats.
- Designed for use with flexible vinyl inserts.
- Drilled and countersunk for #8 screws on 6" centers.
- Length 12'.

- Accepts flexible vinyl insert V12-0338.

Order No.	Mfg. No. / Description	List Price	
749157	(A11-0638TAL12D) 1-1/2" H x 5/8" W	\$134.79	F0-5349000

- Accepts flexible vinyl insert **749400** (V12-0342) and end cap **750706** (F90-0750BN).

Order No.	Mfg. No. / Description	List Price	
749905	(A110342BLY12) 15/16" H x 1/2" W	\$146.59	F0-1620100

- Accepts flexible vinyl insert **749311** (V12-0317).

Order No.	Mfg. No. / Description	List Price	
749993	(A110317TAL12) 1-1/4" H x 1/2" W	\$93.69	F0-8565600

LIMITED QUANTITIES

- Accepts flexible vinyl insert V12-4155 and V12-9787v.

Order No.	Mfg. No. / Description	List Price	
3440348	(A11-0347BLY12D) 1-1/8" H x 5/8" W	\$130.69	F0-8419000

TACO Marine Flexible Vinyl Inserts



- Soft PVC insert provides cushion effect to absorb impact.

- Black vinyl insert fits rub rail **749993** (A11-0317). Dimensions: 15/16" H x 3/8" W.

Order No.	Mfg. No. / Description	List Price	
749311	(V12-0317BKA50-1) Length 50'	\$158.39	F0-7801100

- Black vinyl insert fits rub rail **749157** (A11-0638). Dimensions: 1" H x 1/2" W.

Order No.	Mfg. No. / Description	List Price	
749373	(V12-0338BKA50-1) Length 50'	\$147.29	F0-9296000

- Black vinyl insert fits rub rail **749905** (A11-0342). Dimensions: 5/8" H x 5/16" W.

Order No.	Mfg. No. / Description	List Price	
749400	(V12-0342BKA50-1) Length 50'	\$98.99	F0-9296000

- Black vinyl insert fits rub rail V21-9678. Dimensions: 1-3/16" H x 1/2" W.

Order No.	Mfg. No. / Description	List Price	
3445979	(V12-4144BKA50-1) Length 50'	\$168.79	F0-5181100

- Arctic white vinyl insert fits rub rail A11-0303, V21-9517, V21-9602 and V21-9501. Dimensions: 1" H x 1/2" W.

Order No.	Mfg. No. / Description	List Price	
3445921	(V12-0303WHA50-1) Length 50'	\$198.99	F0-9293100



SPECIAL HANDLING MAY APPLY



- Electronics
- Trolling Motors
- Instruments
- Electrical
- Lighting
- Anchor & Dock
- Safety
- Steering, Controls
- Pumps
- Fuel System
- Seating & Pedestals
- Trailering
- Tops & Covers
- Perform.
- Propellers
- Engine & Care
- Cleaning & Care
- Paint & Paint Acc.
- Fun & Flotation
- Topside Acc.
- Cockpit & Deck
- Hardware, Fasteners
- Camouflage
- Misc.
- Comm.

TACO Marine Black Nylon End Caps



750706



750720



750718

- Durable black nylon.
- Caps rub rail to finish end of rail.
- Sold in pairs.

• Fits rub rail **750326** (V11-3447), V21-0456, V21-0460, V21-3671 and V11-3161.

Order No.	Mfg. No. / Description	List Price	
750718	(F90-0002BKN-1) Width 1-9/16"	\$30.39	F0-7212000

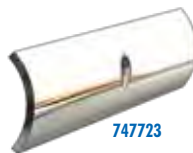
• Fits rub rail **750330/750340** (V11-2423), V21-0457 and V11-3426.

Order No.	Mfg. No. / Description	List Price	
750720	(F90-0001BKN-1) Width 2"	\$39.49	F0-4672000

• Fits rub rail **750302** (V11-0809) and A11-0334/0316.

Order No.	Mfg. No. / Description	List Price	
750706	(F90-0750BN-1) Width 1"	\$3.39	F0-7320000

TACO Marine Stainless Steel Rub Rails



747723



747709



747242

- Stainless steel type 304. Polished mirror finish.
- Drilled and countersunk on 6" centers.

Order No.	Mfg. No. / Description	Thickness	List Price	
747709	(S11-4511P12) 3/4" H x 12' L	.062"	\$83.89	F0-2785000
747723	(S11-4650P12) 1" H x 12' L	.077"	\$130.89	F0-2619000
747242	(S11-4690P12) 1-1/2" H x 12' L	.077"	\$287.39	F0-7110200

TACO Marine Rail End for Stainless Steel Rub Rail



- Durable marine grade stainless steel type 304.
- Width 3/4", length 12".

Order No.	Mfg. No. / Description	List Price	
747280	(S11-2000P12)	\$24.49	F0-4171000

TACO Marine Black Rub Rail Kits



Flexible Vinyl Rub Rail Kit



- Kits include: Vinyl rub rail, insert (if needed), end caps and stainless steel screws.

BLACK FLEXIBLE VINYL RUB RAIL KITS

Order No.	Mfg. No. / Description	Dimensions	Insert Color	List Price	
751001	(V11-0809BWK50-2)	1-1/16" H x 11/16" W x 50' L	White	\$358.59	F0-1015200
751025	(V11-3447BWK50-2)	1-1/4" H x 15/16" W x 50' L	White	\$490.09	F0-6034300
751013	(V11-2423BBK50-2)	1-7/8" H x 1-1/16" W x 50' L	Black	\$673.09	F0-6117400
751030	(V11-3426BBK70-2)	1-7/8" H x 1-3/8" W x 70' L	Black	\$936.59	F0-1655600

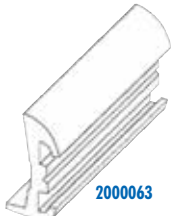
BLACK SEMI-RIGID VINYL RUB RAIL KITS

Order No.	Mfg. No. / Description	Dimensions	Insert Color	List Price	
751037	(V11-4135BKA30-3)	1-7/8" H x 3/4" W x 30' L	No Insert	\$347.19	F0-3034200
751040	(V11-9795BBK50D-2)	1-1/2" H x 3/4" W x 50' L	Black	\$530.49	F0-4317300

Barbour Plastics Rub Rails



2000059



2000063

- Black flex vinyl.
- Length 50'.

Order No.	Mfg. No. / Description	List Price	
2000059	(AL-2015) Flex Base Rub Rail	\$355.59	F0-1984200
2000063	(AL-2235-R) Rigid Base Rub Rail	\$194.49	F0-4163100

Barbour Plastics Flex Inserts



2000065



2000061

- Black flex vinyl.
- Length 50'.

Order No.	Mfg. No. / Description	List Price	
2000061	(AL-2029) Flex Insert for 2000063	\$119.09	F0-6338000
2000065	(AL-2713-F) Flex Tube Insert for 2000059	\$109.69	F0-8767000

Radial 30 Rub Rail Kits



- It's different from all other profiles on the market and can be cold fitted in just a few steps.
- Width 1-1/8".
- Includes: 46' complete profile, (2) end caps and (1) joint cap.

Order No.	Mfg. No. / Description	List Price	
866100	(T130-141-004-W1) White	\$223.49	F0-4465100
866105	(T130-141-004-B1) Black	\$223.49	F0-4465100

Radial 40 Rub Rail Kits



- It's different from all other profiles on the market and can be cold fitted in just a few steps.
- Width 1-5/8".
- Includes: 52' complete profile, (2) end caps and (1) joint cap.

Order No.	Mfg. No. / Description	List Price	
866110	(T130-140-110W) White	\$384.29	F0-0096200
866115	(T130-140-110B) Black	\$384.29	F0-0096200

SPECIAL HANDLING MAY APPLY



- Electronics
- Trolling Motors
- Instruments
- Electrical
- Lighting
- Anchor & Dock
- Safety
- Steering, Controls
- Pumps
- Fuel System
- Seating & Pedestals
- Trailering
- Tops & Covers
- Perform.
- Propellers
- Engine & Care
- Cleaning & Care
- Paint & Paint Acc.
- Fun & Flotation
- Topside Acc.
- Hardware, Fasteners
- Camouflage
- Misc.
- Comm.

T-H Marine Rub Rail End Caps



- Molded black plastic.
- Designed to fit rubber rail molding.
- This unit attaches with screw through the vinyl or rope trim to prevent trim from slipping out.
- UV stable, chemical resistant and corrosion proof molded caps provide attractive and long lasting service.
- Sold per pair.

Order No.	Mfg. No. / Description	List Price	
640064	(ECR-1-DP) For 1-1/2" Wide Molding	\$11.29	FO-0970000
6400139	(ECR-2-DP) For 1-3/4" Wide Molding	\$11.29	FO-0970000

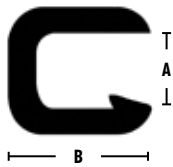
T-H Marine Rub Rail Splices



- Molded black plastic.
- Designed to fit both aluminum and rubber rail molding.
- This unit attaches with screws through the vinyl or rope trim to prevent trim from slipping out.
- UV stable, chemical resistant and corrosion proof molded caps provide attractive and long lasting service.
- Butt splice for 1-1/4" to 1-1/2" rub rail, 2-1/4" long.
- Sold per pair.

Order No.	Mfg. No. / Description	List Price	
6400278	(SR1DP)	\$9.19	FO-3460000

TACO Marine Flexible Vinyl Trim - Self-Locking



- Made of flexible PVC.
- Covers unfinished edges and follows almost any contour or radius.
- Integrated interior aluminum clip and gripping tongue ensures a better fit.
- Packaged 25' length per box.

BLACK

Order No.	Mfg. No. / Description	List Price	
623635	(V30-1005B25-1) Opening 5/32" Flex Trim 9/16"	\$85.09	FO-6595000
623637	(V30-1008B25-1) Opening 1/4" Flex Trim 1/2"	\$85.09	FO-6595000
623639	(V30-1312B25-1) Opening 3/8" Flex Trim 5/8"	\$95.99	FO-9176000

WHITE

Order No.	Mfg. No. / Description	List Price	
623636	(V30-1005W25-1) Opening 5/32" Flex Trim 9/16"	\$85.09	FO-6595000
623638	(V30-1008W25-1) Opening 1/4" Flex Trim 1/2"	\$85.09	FO-6595000

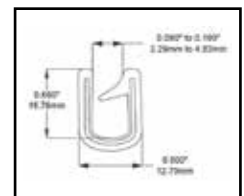
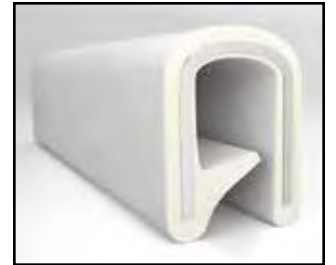
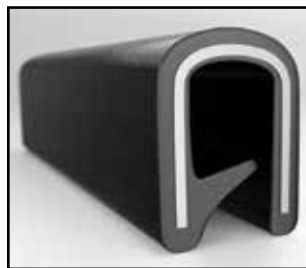
Trim-Lok U-Channel Edging



- The original "Trim Lok" gives a beautiful finished look! Just push it on and its on to stay...no stapling or glue... Saves on labor...grips on difficult materials, compound curves, etc..
- Rubber-Lok has individual metal clips inside that provide a secure grip.
- Comes with an aluminum inner core for corrosion resistance, light weight.
- Finish is textured for appearance.
- Accommodates edges up to 3/16".
- Sold by the linear foot. Cut to order (Not all locations).

Order No.	Mfg. No. / Description	List Price	
2006401	(6100A) Black - With Side Seal	\$8.49	HO-9050000
2006402	(6100C) Black - With Top Seal	\$8.49	HO-9050000
2006403	(TL) Black - No Seal	\$2.89	HO-3710000
2006404	(TL-W) White - No Seal	\$3.49	HO-9020000

Standard Products QuickEdge® Trim - Self-Locking



- PVC with aluminum core.
- Flexible embossed vinyl aluminum core QuickEdge trim.
- Standard single lip trim for 1/8" to 3/16" edges.
- Grips edges range: .090" to .190".
- Sold 200' rolls.

Order No.	Mfg. No. / Description	List Price	
623505	(75000346) White	\$843.39	HO-3060500
623529	(75000348) Black	\$1,049.59	HO-5792600



SPECIAL HANDLING MAY APPLY



- Electronics
- Trolling Motors
- Instruments
- Electrical
- Lighting
- Anchor & Dock
- Safety
- Steering, Controls
- Pumps
- Fuel System
- Seating & Pedestals
- Trailering
- Tops & Covers
- Perform.
- Propellers
- Engine & Care
- Cleaning & Care
- Paint & Paint Acc.
- Fun & Flotation
- Topside Acc.
- Cockpit & Deck
- Hardware, Fasteners
- Camouflage
- Misc.
- Comm.

Perko Surface Mount Flush Lock and Latches



- Black polymer body.
- Chrome plated zinc alloy handle.
- Stainless steel stem and lock nut.
- Face plate dimensions: 2-1/2" x 2-1/2".
- Mounting hole diameter: 2".
- For door thickness 1/4" to 1-1/8".

OFFSET CAM BAR (3/8" TO 3") AND FLEXIBLE POLYMER STRIKE

Order No.	Mfg. No. / Description	List Price	
543648	(0931 DP1 BLK) Lock with 2 Keys	\$59.49	F0-4614000
543632	(0932 DP1 BLK) Latch, Non-Locking	\$48.29	F0-0833000

OFFSET ADJUSTABLE CAM BAR (3/8" TO 3")

Order No.	Mfg. No. / Description	List Price	
5315155	(0931 DP2 BLK) Lock with 2 Keys	\$59.49	F0-4614000
543640	(0932 DP2 BLK) Latch, Non-Locking	\$48.29	F0-0833000

STRAIGHT CAM BAR (1-1/16" TO 2-9/16" AND FLEXIBLE POLYMER STRIKE

Order No.	Mfg. No. / Description	List Price	
543492	(0932 DP3 BLK) Latch, Non-Locking	\$48.29	F0-0833000

SPARE PARTS

Order No.	Mfg. No. / Description	List Price	
543649	(0931 001 99A) Offset Cam Bar	\$22.49	F0-4751000
5315152	(0931 003 99A) Straight Cam Bar	\$22.49	F0-4751000
543505	(0931 000 99B) Flexible Polymer Strike	\$3.49	F0-4420000

Perko Lock and Latch Cover



- Black fiber reinforced polymer.
- Hinged, water resistant.
- Overall dimensions: 2-3/4" x 3-1/4".
- Fits Perko Figs. 0931 and 0932.

Order No.	Mfg. No. / Description	List Price	
544901	(1089 DP1 BLK)	\$8.39	F0-7850000

Perko Surface Mount Flush Latch



- Black polymer body with chrome plated zinc alloy handle.
- Latch, non-locking.
- Stainless steel stem and lock nut.
- Face plate dimensions: 3-1/8" x 3-1/8".
- For door thickness 1/8" to 3/4".
- Flush mounts in a 2-3/8" x 2-3/8" hole.
- Surface mounts in a 1-5/8" diameter hole with polymer spacer (included).
- Adjustment cam bar: 1/2" to 3".

Order No.	Mfg. No. / Description	List Price	
544951	(1032 DP1 BLK)	\$51.29	F0-0953000

Perko "T" Handle Surface Mount Locks, Latches and Pull



- Polymer body.
- Chrome plated zinc alloy "T" handle.
- Stainless steel stem.
- Gasket included for smooth surface applications.
- Toothed back for carpet surface applications.
- Face plate diameter: 3".
- Mounting hole diameter: 2-1/2".
- For mounting surfaces: 1/8" to 3/4".

OFFSET CAM BAR ADJUSTS 3/4" TO 2-3/8"

Order No.	Mfg. No. / Description		List Price	
536520	(1091 DP1 BLK) Lock with 2 Keys	Black	\$61.99	F0-9334000
548012	(1091 DP1 WHT) Lock with 2 Keys	White	\$57.89	F0-2504000
5315035	(1092 DP1 BLK) Latch, Non-Locking	Black	\$55.49	F0-4883000
548050	(1092 DP1 WHT) Latch, Non-Locking	White	\$51.79	F0-5263000

STRAIGHT CAM BAR ADJUSTS 1-1/4" TO 1-7/8"

Order No.	Mfg. No. / Description		List Price	
5315033	(1091 DP3 BLK) Lock with 2 Keys	Black	\$61.99	F0-9334000
5315036	(1092 DP3 BLK) Latch, Non-Locking	Black	\$55.49	F0-4883000

THREADED SHAFT OFFSET CAM BAR

Order No.	Mfg. No. / Description	List Price	
536651	(1091 001 88A)	\$21.89	F0-2351000

T-H Marine Anchor Handle Locks



- Sure grip two-finger handle.
- Toothed and "Double-D" shaped mounting for carpeted lids.
- Waterproof O-ring seal.
- Powder coated steel pawls - straight and offset.
- Single hex nut installation.
- Fits aluminum, fiberglass and carpeted lids.
- Stainless steel stem.
- Mounts in lids up to 3/4" thick. Installs into a 2-3/8" to 2-1/2" hole.

LOCKING MODELS

Order No.	Mfg. No. / Description	List Price	
639802	(ALC-2-DP) White Base with Chrome Handle	\$49.89	F0-2943000
639804	(ALC-1-DP) Black Base with Chrome Handle	\$49.59	F0-1743000
639806	(AL-1-DP) Black Base with Black Handle	\$47.99	F0-9533000

NON-LOCKING MODEL

Order No.	Mfg. No. / Description	List Price	
3428965	(ALCN-1-DP) Black Base with Black Handle	\$53.99	G1-9053000

- Electronics
- Trolling Motors
- Instruments
- Electrical
- Lighting
- Anchor & Dock
- Safety
- Steering, Controls
- Pumps
- Fuel System
- Seating & Pedestals
- Trailering
- Tops & Covers
- Perform.
- Propellers
- Engine & Care
- Cleaning & Care
- Paint & Paint Acc.
- Fun & Flotation
- Topside Acc.
- Cockpit & Deck
- Hardware, Fasteners
- Camouflage
- Misc.
- Comm.

White Cap Nylon T-Style Flush Handles



- Nylon handle and body.
- All Locking handles are keyed alike.
- Threaded offset cam bar with set screw included.
- Neoprene O-ring.
- Stainless steel shaft is 3/8" long unless otherwise noted.
- Diameter 3".
- Cut-out: 2-1/2".
- Surface depth: 1/8" - 3/4".

BLACK NYLON

Order No.	Mfg. No. / Description	List Price	
2011611	(S-0230B) Non-Locking	\$30.99	F0-9612000

BLACK NYLON

Order No.	Mfg. No. / Description	List Price	
3802501	(S-0226WC) Locking	\$52.89	F0-2073000
3802503	(S-0230WC) Non-Locking	\$39.09	F0-6372000

White Cap Locking Pull Slam Latch



- 316 stainless steel.
- Backing plate included.
- Key and "L" Keeper included.
- Flange: 2-3/8".
- Cut-out: 2".
- Depth: 1-1/2".



LIMITED QUANTITIES

Order No.	Mfg. No. / Description	List Price	
3806157	(6095C) Locking	\$71.99	F0-9305000

Marpac Stainless Steel Push-to-Close Latches



- Flush mount.
- Pull to open.
- Stainless steel face and pull.
- Corrosion resistant materials.
- Single, round-hole installation.
- Inside actuation when locked or unlocked.

NON-LOCKING LATCHES

Order No.	Description	Cutout Size:	List Price	
7-2267	1-3/4" OD	1-3/8"	\$31.29	G0-6902000
7-2270	2-3/8" OD	2"	\$38.19	G0-9552000

LOCKING LATCH

Order No.	Description	Cutout Size:	List Price	
7-2271	2-3/8" OD	2"	\$49.09	G0-9823000

White Cap Chrome Plated Zinc/Black Nylon T-Style Flush Handles



- Chrome plated handle and black nylon body.
- All Locking handles are keyed alike.
- Threaded offset cam bar with set screw included.
- Neoprene O-ring.
- Stainless steel shaft is 3/8" long unless otherwise noted.
- Diameter 3".
- Cut-out: 2-1/2".
- Surface depth: 1/8" - 3/4".

Order No.	Mfg. No. / Description	List Price	
2011596	(S-0226B) Locking	\$41.99	F0-9392000
2011603	(S-0230B) Non-Locking	\$30.09	F0-6012000
3802504	(S-0231BC) Non-Locking No Shaft	\$27.69	F0-8391000

White Cap Zinc Cam Bars



- For freshwater use.
- Included Set Screw allows for Cam Bars to be secured onto the compression handle shaft.

THREADS ONTO SHAFT

Order No.	Mfg. No. / Description	Length	List Price	
2011597	(S-0226LO) Offset-Long	2-3/8"	\$6.19	F0-3340000
2011599	(S-0226SO) Offset-Short	1-3/4"	\$5.29	F0-0730000
2011600	(S-0226A) Straight-Long	2"	\$5.29	F0-0730000
2011602	(S-0226SL) Straight-Short w/Thread	2-7/8"	\$5.29	F0-0730000

SLIDES UP/DOWN SHAFT WITH OPENING

Order No.	Mfg. No. / Description	Length	List Price	
2011598	(S-0226LOSTR) Offset-Long Star	1-3/4"	\$6.19	F0-3340000
2011601	(S-0226ASTR) Straight-Long Star	2"	\$5.29	F0-0730000

Marpac Push-to-Close Latches



- Pull to open.
- Corrosion resistant materials.
- Single, 2" diameter round-hole installation.
- Fits panels .475" to .675" thick.

Order No.	Description	List Price	
7-2260	Black	\$8.69	F0-8060000
7-2261	White	\$8.69	F0-8060000

T-H Marine Nautical Slam Latch



- Oval top, nautical design.
- Totally corrosion resistant. UV stable.
- Simple installation in a 2" round hole.
- Stainless steel pawl catch, mounting hardware and striker plate.
- Fits 1-1/16" to 7/8" lids.

Order No.	Mfg. No. / Description	List Price	
641085	(NFSL-5-1-DP) Black	\$28.19	F0-3791000

- Electronics
- Trolling Motors
- Instruments
- Electrical
- Lighting
- Anchor & Dock
- Safety
- Steering, Controls
- Pumps
- Fuel System
- Seating & Pedestals
- Trailer
- Tops & Covers
- Perform.
- Propellers
- Engine & Care
- Cleaning & Care
- Paint & Paint Acc.
- Fun & Flotation
- Topside Acc.
- Cockpit & Deck
- Hardware, Fasteners
- Camouflage
- Misc.
- Comm.

Perko Fig. 841 Flush Ring Pull



- Chrome plated zinc alloy.
- Dimensions: 1-3/4" x 1-3/8".
- Uses #6 fasteners.

Order No.	Mfg. No. / Description	List Price	
542490	(0841 DPO CHR)	\$19.79	FO-5831000

Perko Fig. 1232 Flush Ring Pull



- Chrome plated zinc alloy.
- Face plate OD: 1-5/8".
- Uses #6 fasteners.

Order No.	Mfg. No. / Description	List Price	
533618	(1232 DP1 CHR)	\$18.79	FO-5131000

Attwood Brass Large Flush Lift Ring

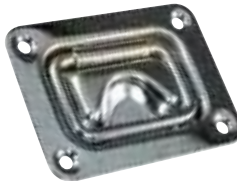


- Chrome plated brass.
- Large lifting ring allows a full grip.
- Flush appearance, neatly recessed for safety.
- Pre-drilled with four holes for #6 fasteners.
- Flange size: 3" L x 2-1/4" W. Handle size: 2" L x 3/4" ID ring.
- Uses (4) #6 fasteners.

Order No.	Mfg. No. / Description	List Price	
1143325	(3325-3)	\$22.69	FO-8851000

LIMITED QUANTITIES

Marpac Stainless Steel Flush Lifting Handle



- Polished stainless steel.
- Dimensions: 2-1/4" x 3".
- Uses #8 fasteners (not included).

Order No.	Description	List Price	
7-0085	Flush Lifting Handle	\$8.39	FO-7850000

Perko Fig. 1103 Flush Ring Pull



- Chrome plated bronze.
- Dimensions: 2-9/16" x 2".
- Uses #8 fasteners.

Order No.	Mfg. No. / Description	List Price	
531978	(1103 DPO CHR)	\$56.59	FO-1693000

Marpac Stainless Steel Locking Lift Ring



- Stainless steel.
- Requires 3/4" installation hole.
- Fits panels up to 3/4" thick.
- Dimensions: 2-1/8" x 1-15/16".
- Includes: Straight & offset cam locks and two keys.

Order No.	Description	List Price	
7-54205	Locking Lift Ring	\$11.79	FO-5280000

Perko Fig. 776 Flush Lifting Handle



- Chrome plated bronze.
- Mounting holes at corners.
- Face plate dimensions: 3-3/4" x 2-3/4".
- Inside handle dimensions: 2-3/16" x 1-3/16".
- Uses #8 fasteners.

Order No.	Mfg. No. / Description	List Price	
542197	(0776 DP2 CHR)	\$100.39	FO-7207000

Marpac Stainless Steel Hatch Cover Pull



- Type 304 stainless steel with electro-polished finish.
- Stainless steel washer and keep ring.
- Lays flat - easy to use.
- Lifting disc: 1-1/4".
- Stem diameter: 3/16".

Order No.	Description	List Price	
7-0651	Hatch Cover Pull	\$4.59	FO-1230000

White Cap Flush Pull Ring



- Chrome plated.
- Maintains a flush appearance and recessed for safety.
- Dimensions: 1-1/2" x 1-3/4".

Order No.	Mfg. No. / Description	List Price	
2011618	(S-3360C)	\$15.79	FO-5011000

Marpac Stainless Steel Lift Ring



- Polished 304 stainless steel.
- Surface mount installation.
- Dimensions: 2-1/8" x 1-15/16".

Order No.	Description	List Price	
7-0084	Lift Ring	\$5.99	FO-9140000

Perko Fig. 1220 Flush Lifting Handle



- Chrome plated zinc alloy.
- Face plate dimensions: 3" x 2-1/4".
- Inside handle dimensions: 1-7/8" x 1".
- Uses #8 fasteners.

Order No.	Mfg. No. / Description	List Price	
533427	(1220 DPO CHR)	\$24.79	FO-5371000

Perko Fig. 1221 Flush Lifting Pull



- Chrome plated zinc alloy and black polymer finishing flange.
- Spring loaded.
- Can be mounted horizontally or vertically.
- Flange: 3/4" x 3-1/4".
- Uses #8 fasteners.

Order No.	Mfg. No. / Description	List Price	
533415	(1221 DPO CHR)	\$22.09	FO-6451000

Electronics

Trolling Motors

Instruments

Electrical

Lighting

Anchor & Dock

Safety

Steering, Controls

Pumps

Fuel System

Seating & Pedestals

Trailering

Tops & Covers

Perform.

Propellers

Engine & Care

Cleaning & Care

Paint & Paint Acc.

Fun & Flotation

Topside Acc.

Cockpit & Deck

Hardware, Fasteners

Camouflage

Misc.

Comm.

Perko Figs. 918 Rim Lock Set



- Chrome plated zinc alloy.
- Regular bevel with box strike.
- Locks by turn button from inside or key from outside.
- For door thickness: 5/8" to 1-3/8".
- Dimensions case: 3-7/8" x 2".
- Dimensions escutcheon: 4-3/8" x 1-1/4".
- Uses #6 fasteners.
- Complete with two keys.

Order No.	Mfg. No. / Description	List Price	
543517	(0918 DPO CHR)	\$199.69	FO-8793100

Perko Fig. 567 Tubular Latch Set



- Chrome plated zinc alloy.
- Sliding lock button.
- For door thickness 1" to 1-3/8".
- Dimensions case: 4-3/8" x 1-1/4".
- Tube OD 3/4".
- Uses #6 fasteners.

Order No.	Mfg. No. / Description	List Price	
540977	(0567 DPO CHR)	\$133.89	FO-2739000

Perko Fig. 574 Door Stop and Holder



- Chrome plated bronze.
- Rubber bumper.
- Dimensions: 3-1/4" L x 1-3/4" O.D.

Order No.	Mfg. No. / Description	List Price	
534068	(0574 DP2 CHR)	\$136.59	FO-1659000

Marpac Stainless Steel Ball Catch



- Heavy duty cast type 316 marine grade stainless steel.
- Dimensions: 2" W x 3/8" H.

Order No.	Description	List Price	
7-0221	Ball Catch	\$20.29	FO-0241000

Perko Fig. 927 Mortise Lock Set



- Chrome plated zinc alloy.
- Locked by turn button from inside or key from outside.
- Bevel can be reversed during installation.
- For door thickness: 1" to 1-3/8".
- Dimensions case: 2-3/4" x 2".
- Dimensions escutcheon: 4-3/8" x 1-1/4".
- Uses #6 fasteners.
- Complete with two keys.

Order No.	Mfg. No. / Description	List Price	
543606	(0927 DPO CHR)	\$181.99	FO-9372100

Perko Fig. 928 Rim Latch Set



- Chrome plated zinc alloy.
- Sliding lock button.
- Regular bevel with box strike.
- For door thickness: 5/8" to 1-3/8".
- Dimensions case: 2-1/8" x 1-3/4".
- Dimensions escutcheon: 4-3/8" x 1-1/4".
- Uses #6 fasteners.

Order No.	Mfg. No. / Description	List Price	
543618	(0928 DPO CHR)	\$121.99	FO-9358000

Perko Fig. 1177 Door Stop



- Chrome plated zinc alloy.
- Rubber bumper.
- Length 1".
- 1-1/4" OD.
- Uses #4 fasteners.

Order No.	Mfg. No. / Description	List Price	
532906	(1177 DPO CHR)	\$12.49	FO-4780000

Perko Fig. 559 Door Catch



- Black polymer ball stud and socket.
- Stud dimensions: 1-1/8" x 3/8".
- Socket dimensions: 1-3/8" x 7/8".
- Uses #4 R.H. fasteners.

Order No.	Mfg. No. / Description	List Price	
540838	(0559 DP) 2 Per Pack	\$8.89	FO-2260000
540839	(0559) Sold Bulk	\$4.29	FO-0030000

Perko Fig. 960 Mortise Latch Set



- Chrome plated zinc alloy.
- Turn button lock.
- Bevel can be reversed during installation.
- For doors thickness: 1" to 1-3/8".
- Dimensions case: 2-1/4" x 1-13/16".
- Dimensions escutcheon: 4-3/8" x 1-1/4".
- Uses #6 fasteners.

Order No.	Mfg. No. / Description	List Price	
543973	(0960 DPO CHR)	\$119.39	FO-7538000

Perko Fig. 930 Rim Latch Set



- Chrome plated zinc alloy.
- Sliding lock button.
- Reverse bevel with flush strike.
- For door thickness: 5/8" to 1-3/8".
- Dimensions case: 2-1/8" x 1-3/4".
- Dimensions escutcheon: 4-3/8" x 1-1/4".
- Uses #6 fasteners.

Order No.	Mfg. No. / Description	List Price	
543644	(0930 DPO CHR)	\$121.99	FO-9358000

Perko Fig. 1065 Door Holder



- Stainless steel clip has 1-3/8" x 7/16" base.
- Chrome plated zinc alloy arrow has 1-5/8" x 3/4" base.
- Projects 1-3/4".
- Uses #8 fasteners.
- Sold 1 per card, 5 cards per box.

Order No.	Mfg. No. / Description	List Price	
531764	(1065 DPO CHR)	\$31.89	FO-2322000

Perko Fig. 1216 Door Button with Spring



- Chrome plated zinc alloy.
- Black polymer button.
- Supplied with phosphor bronze tension spring.
- 1-3/4" OD.
- Uses #6 fasteners.

Order No.	Mfg. No. / Description	List Price	
533364	(1216 DPO CHR)	\$16.69	FO-8611000

- Electronics
- Trolling Motors
- Instruments
- Electrical
- Lighting
- Anchor & Dock
- Safety
- Steering, Controls
- Pumps
- Fuel System
- Seating & Pedestals
- Trailering
- Tops & Covers
- Perform.
- Propellers
- Engine & Care
- Cleaning & Care
- Paint & Paint Acc.
- Fun & Flotation
- Topside Acc.
- Cockpit & Deck
- Hardware, Fasteners
- Camouflage
- Misc.
- Comm.

T-H Marine Anti-Rattle Pontoon Gate Door Stops



- Injection molded pontoon gate door stop.
- Stops gate rattle.
- Requires no welding.
- Simple installation with one #10 screw.
- Gray.

WITH RIBS FOR 1-1/4" TUBING

Order No.	Mfg. No. / Description	List Price	
6400127	(DS-1L-DP) Left Hinge	\$6.79	FO-5740000
6400128	(DS-1R-DP) Right Hinge	\$6.79	FO-5740000

WITHOUT RIBS - UNIVERSAL FIT

Order No.	Mfg. No. / Description	List Price	
6400129	(DS-2L) Left Hinge	\$4.39	FO-7030000
6400130	(DS-2R) Right Hinge	\$4.39	FO-7030000

White Cap Square Tube Pontoon Gate Latch



- Stainless steel.
- Operates on right/left handed gates.
- No need to cut around skin of pontoon fence.
- Simple one person operation.
- Bolt size: 5/16", tube: 1-1/4".
- Meets NMMA/USCG 400lbs impact test.

Order No.	Mfg. No. / Description	List Price	
3802542	(3995SSC)	\$74.79	FO-5325000

Perko Fig. 1353 Slim Barrel Bolt



- Chrome plated zinc alloy.
- Integral friction pad eliminates rattle and provides smooth operation.
- Length 3-1/2", width 3/4".
- Uses #6 fasteners.

Order No.	Mfg. No. / Description	List Price	
545307	(1353 DPO CHR)	\$32.69	FO-8822000

Perko Fig. 947 Barrel Bolts



- Chrome plated bronze body and high impact black nylon bulkhead keeper.
- 3/8" Diameter bolt.
- Includes both styles of keepers.
- Bulkhead keeper easily installs in a 5/8" hole.
- Uses #6 fasteners.

Order No.	Mfg. No. / Description	List Price	
547298	(0947 DP1 CHR) Overall Dim.: 3-7/16" x 1-7/16"	\$55.89	FO-2193000
543808	(0947 DP2 CHR) Overall Dim.: 4-5/16" x 1-7/16"	\$60.59	FO-1424000
543535	(0947 DP3 CHR) Overall Dim.: 5-1/4" x 1-7/16"	\$69.79	FO-5884000

T-H Marine Pontoon Gate Latches



- Nylon molded part - prevents rattle.
- Operates on right or left hinged gates.
- Fits 1", 1-1/8" and 1-1/4" square tubing.
- Prevents gate from swinging inward.
- All parts install on gate only.

Order No.	Mfg. No. / Description	List Price	
247750	(GL-1-DP) Black	\$20.79	FO-5541000
247751	(GL-2-DP) Gray	\$20.79	FO-5541000

Marpac Barrel Bolts



- Precision cast stainless steel.

Order No.	Description	List Price	
7-0409	3-1/2" x 1-1/2"	\$26.89	FO-2881000
7-0410	4-1/2" x 1-1/2"	\$26.79	FO-5781000

Perko Fig. 1244 Barrel Bolt



- Chrome plated zinc alloy.
- Integral friction pad eliminates rattle and provides smooth operation.
- Overall dimensions: 3-3/8" x 1-1/4".
- Uses #6 R.H. fasteners.

Order No.	Mfg. No. / Description	List Price	
545319	(1244 DPO CHR)	\$31.59	FO-1122000

Perko Fig. 1053 Ship Bolt



- Chrome plated bronze.
- Includes brass friction spring to eliminate rattle and provide detented operation.
- Overall dimensions: 2-5/8" x 1-1/4".
- Uses #6 fasteners.

Order No.	Mfg. No. / Description	List Price	
531649	(1053 DPO CHR)	\$64.99	FO-9454000

Perko Fig. 956 Cabin Door Hooks



- Chrome plated cast bronze.
- Sold 1 per card, 5 cards per box.

Order No.	Mfg. No. / Description	List Price	
547337	(0956 DP4 CHR) Length 3"	\$35.29	FO-0742000
547349	(0956 DP6 CHR) Length 4"	\$51.39	FO-7953000
547363	(0956 DP8 CHR) Length 6"	\$62.79	FO-5934000

Perko Fig. 1287 Cabin Door Hooks



- Chrome plated zinc alloy.
- Uses #6 fasteners.
- Sold 1 per card.

Order No.	Mfg. No. / Description	List Price	
534037	(1287 DP1 CHR) Length 2"	\$14.49	FO-4101000
534051	(1287 DP2 CHR) Length 2-1/2"	\$15.59	FO-1901000
534063	(1287 DP3 CHR) Length 3"	\$16.19	FO-3311000

Perko Fig. 1198 Safety Hasps



- Chrome plated zinc alloy.
- Width 1". Padlock clearance 1/4".
- Uses #6 fasteners.

Order No.	Mfg. No. / Description	List Price	
533237	(1198 DP2 CHR) Closed Length: 3"	\$25.79	FO-5081000
533227	(1198 DP3 CHR) Closed Length: 3-3/4"	\$26.29	FO-0481000

Perko Fig. 935 Sliding Window Stop



- Chrome plated zinc alloy with polymer cover on stopping plate.
- Stopping plate length 1-1/2".
- Mounting plate dimensions: 1-7/8" x 3/4".
- Uses #8 fasteners.

Order No.	Mfg. No. / Description	List Price	
543668	(0935 DPO CHR)	\$22.09	FO-6451000

Perko Fig. 1101 Cupboard Bolt



- Chrome plated zinc alloy.
- Black polymer slide and knob.
- Overall dimensions: 2-1/8" x 1-1/2".
- Uses #6 fasteners.

Order No.	Mfg. No. / Description	List Price	
531928	(1101 DPO CHR)	\$32.09	FO-6422000

Perko Fig. 1199 Cabin Door Hooks



- Chrome plated zinc alloy.
- Uses #6 fasteners.
- Sold 1 per card.

Order No.	Mfg. No. / Description	List Price	
533263	(1199 DP1 CHR) Length 1-3/4"	\$14.49	FO-4101000
533249	(1199 DP2 CHR) Length 2-1/4"	\$15.69	FO-8901000
533251	(1199 DP3 CHR) Length 3"	\$16.09	FO-6211000
533198	(1199 DP4 CHR) Length 4"	\$16.19	FO-3311000

Marpac Swivel Lock Hasps



- Type 304 stamped stainless steel.
- A strong versatile utility hasp with a swivel head.
- Uses #6 fasteners.

Order No. / Description	List Price	
7-0216 Dimensions: 2-3/4" x 1"	\$15.89	FO-2111000
7-0218 Dimensions: 3-1/4" x 1"	\$14.79	FO-5301000

Perko Fig. 1194 Swivel Safety Lock Hasp



- Chrome plated zinc alloy.
- Padlock eye swivels to act as a latch.
- Width 1". Closed length: 3".
- Padlock clearance: 11/32".
- Uses #6 fasteners.

Order No.	Mfg. No. / Description	List Price	
533173	(1194 DPO CHR)	\$30.79	FO-5512000
533174	(1194 DPO 99A) Spare Keeper (1 Per Card)	\$15.39	FO-7701000

Perko Fig. 1261 Rope Guide



- Chrome plated zinc alloy.
- Hold ID: 5/16".
- Base: 1-1/4" x 3/4".
- Uses #6 fasteners.
- Sold in pairs.

Order No.	Mfg. No. / Description	List Price	
532944	(1261 DPO CHR)	\$10.29	FO-0270000

Perko Fig. 1102 Cupboard Catches



- Chrome plated zinc alloy.
- Overall dimensions: 1-1/2" x 1-7/8".
- Uses #6 fasteners.

Order No.	Mfg. No. / Description	List Price	
531942	(1102 001 CHR) Box Strike Bulk	\$39.69	FO-8772000
531954	(1102 002 CHR) 3/8" Box Strike Bulk	\$37.69	FO-8362000
531930	(1102 DP1 CHR) 3/8" Box Strike Display Pack	\$39.09	FO-6372000
531957	(1102 002 99A) 3/16" Spacers for 531954	\$2.59	FO-1810000

Electronics

Trolling Motors

Instruments

Electrical

Lighting

Anchor & Dock

Safety

Steering, Controls

Pumps

Fuel System

Seating & Pedestals

Trailer

Tops & Covers

Perform.

Propellers

Engine & Care

Cleaning & Care

Paint & Paint Acc.

Fun & Flotation

Topside Acc.

Cockpit & Deck

Hardware, Fasteners

Camouflage

Misc.

Comm.

Perko Fig. 921 Flush Lock and Latch



- Chrome plated zinc alloy.
- Lock with 2 keys.
- For door thickness 1/2" to 3/4".
- Installs in a 1-5/8" diameter hole.
- Face plate dimensions: 2-1/4" x 2".

Order No.	Mfg. No. / Description	List Price	
543531	(0921 DPO CHR)	\$68.99	FO-9284000

Perko Fig. 1051 Flush Ring Catch



- Chrome plated zinc alloy.
- Phosphor bronze spring.
- Dimensions: 2-1/4" x 1-3/8".
- Uses #6 fasteners.

Order No.	Mfg. No. / Description	List Price	
531637	(1051 DPO CHR)	\$33.29	FO-0332000

Marpac Flush Hatch Pull



- Injection molded and large enough to get your fingers in.
- Strong material will flex but not break when stepped on.
- Dimensions: 2-1/4" x 2-1/4".
- Requires 1-5/8" mounting hole.

Order No.	Description	List Price	
7-54207	Flush Hatch Pull	\$3.09	FO-6120000

Marpac Drawer Knob



- Cast 316 stainless steel with 1" screw.
- Diameter 1".

Order No.	Mfg. No. / Description	List Price	
7-0408	Drawer Knob	\$8.19	FO-3750000

Perko Fig. 610 Wardrobe or Utility Hook



- Chrome plated zinc alloy.
- Base width 1-1/8".
- Projection 1-3/8".
- Uses #6 fasteners.

Order No.	Mfg. No. / Description	List Price	
541195	(0610 DPO CHR)	\$7.79	FO-5450000

Marpac Push-to-Close Latch



- Chrome plated.
- Corrosion and UV resistant.
- Quick, round-hole installation.
- Knob stores flush; pops out at a touch.
- Pull the knob to open, simply push the door to close.

Order No.	Description	List Price	
7-2285	Push-to-Close Latch	\$38.69	FO-8072000

Perko Fig. 1110 Flush Pull



- Chrome plated zinc alloy and stainless steel.
- Face plate: 3-11/16" x 1-11/16".
- Depth 7/16".
- Uses #6 fasteners.

Order No.	Mfg. No. / Description	List Price	
Z02445	(1110 DPO CHR)	\$24.79	FO-5371000

LIMITED QUANTITIES

T-H Marine Lid Lift Pull



- Injection molded.
- Outside dimensions: 2-3/4" x 2-3/4".
- Hose size: 2-1/8".
- Uses (4) #6 fasteners.
- Black.

Order No.	Mfg. No. / Description	List Price	
642277	(LL-1-DP)	\$9.19	FO-3460000

Perko Fig. 1056 Elbow Catch



- Chrome plated zinc alloy with stainless steel spring.
- Dimensions: 1-1/8" x 9/16".
- Uses #6 fasteners.

Order No.	Mfg. No. / Description	List Price	
531675	(1056 DPO CHR)	\$19.49	FO-4631000

Perko Fig. 1021 Elbow Catch



- Black polymer.
- Integral spring.
- Dimensions: 1-3/16" x 5/8".
- Uses #6 fasteners.

Order No.	Mfg. No. / Description	List Price	
531676	(1021 DPO BLK)	\$7.79	FO-5450000

Marpac Locking Push-to-Close Latch



- Glass reinforced black nylon.
- Corrosion resistant.
- Locking.
- Pull tab in line with latching pawl.

Order No.	Description	List Price	
7-2280	Push-to-Close Latch	\$33.59	FO-1532000

Perko Fig. 958 Drawer Pull



- Chrome plated zinc alloy.
- Overall width 3-7/16", inside width 2-5/16".
- Uses #6 fasteners.

Order No.	Mfg. No. / Description	List Price	
543961	(0958 DPO CHR)	\$18.19	FO-3721000

Perko Fig. 1016 Flush Pull



- Black polymer.
- Installs in a 1-3/4" diameter hole.
- Face plate: 2-1/4" x 2-1/4".
- Depth 15/16".
- Uses #6 fasteners.

Order No.	Mfg. No. / Description	List Price	
531550	(1016 DPO BLK)	\$5.09	FO-6530000

Perko Fig. 975 Coat and Hat Hook



- Chrome plated zinc alloy.
- Base width 1-1/4".
- Projection 3".
- Uses #6 fasteners.

Order No.	Mfg. No. / Description	List Price	
544141	(0975 DP2 CHR)	\$8.89	FO-2260000

Marpac 90° Angle Bracket



- Polished stainless steel.
- Length 2-3/8", width 9/16".
- Sold per pair.

Order No.	Description	List Price	
7-0411	90° Angle Bracket	\$5.79	FO-5040000

- Electronics
- Trolling Motors
- Instruments
- Electrical
- Lighting
- Anchor & Dock
- Safety
- Steering, Controls
- Pumps
- Fuel System
- Seating & Pedestals
- Trailering
- Tops & Covers
- Perform.
- Propellers
- Engine & Care
- Cleaning & Care
- Paint & Paint Acc.
- Fun & Flotation
- Topside Acc.
- Cockpit & Deck
- Hardware, Fasteners
- Camouflage
- Misc.
- Comm.

Perko Fig. 1293 Loose Pin Butt Hinges



534138

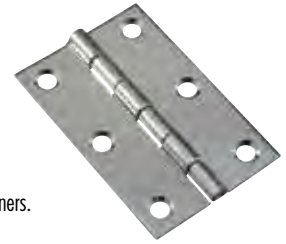


534176

- Chrome plated zinc alloy.
- Stainless steel removable pin.
- Uses #8 fasteners, except **534176** uses #10 fasteners.
- Sold per pair.

Order No.	Mfg. No. / Description	List Price	FO-#
534138	(1293 DP3 CHR) 1-1/2" x 2" (4 Screws Per Hinge)	\$29.39	FO-7502000
534188	(1293 DP4 CHR) 2" x 2" (4 Screws Per Hinge)	\$29.99	FO-9902000
534176	(1293 DP9 CHR) 3" x 3" (6 Screws Per Hinge)	\$38.39	FO-7862000

Marpac Stainless Steel Butt Hinges



- Stainless steel.
- Polished marine grade construction.
- Corrosion resistant.
- .060 gauge.
- Uses #8 fasteners, except **7-1009** uses #10 fasteners.
- Sold per pair.

Order No.	Description	List Price	FO-#
7-1007	Open Width 2", Pin Length 2"	\$15.19	GO-8101000
7-1008	Open Width 2", Pin Length 3"	\$15.79	GO-8501000
7-1009	Open Width 3", Pin Length 3"	\$17.49	GO-2711000

Marpac Butt Hinge



- Stainless steel.
- Corrosion resistant.
- Open Width 1-3/8"
- Pin length 1-1/2".
- Uses #8 fasteners.
- Sold per pair.

Order No.	Description	List Price	FO-#
7-0686	Butt Hinge	\$10.49	GO-3070000

Marpac Utility Hinge



- Polished, marine grade stainless steel construction.
- .060" gauge.
- Open width 3". Pin length 1-1/2".
- Uses #8 fasteners.
- Sold per pair.

Order No.	Description	List Price	FO-#
7-0457	Utility Hinge	\$13.19	GO-4880000

Perko Fig. 951 Hinge



- Chrome plated bronze.
- Open width 3". Pin height 1-1/2".
- Uses #8 fasteners.
- Sold per pair.

Order No.	Mfg. No. / Description	List Price	FO-#
543858	(0951 DP1 CHR)	\$93.99	FO-9756000

Perko Fig. 808 Hinge



- Chrome plated zinc alloy.
- Open width 3". Pin height 1-1/2".
- Uses #8 fasteners.
- Sold per pair.

Order No.	Mfg. No. / Description	List Price	FO-#
542325	(0808 DPO CHR)	\$36.39	FO-7452000

Marpac Utility Hinge



- Stainless steel.
- Flush mount.
- Open width 2-5/8", pin length 1-1/2".
- Uses #8 fasteners.
- Sold per pair.

Order No.	Description	List Price	FO-#
7-1010	Utility Hinge	\$20.89	FO-2641000

Marpac Shortside Hinge



- Polished, marine grade stainless steel construction.
- Open width 2".
- Pin length 1-1/2".
- Uses #8 fasteners.
- Sold per pair.

Order No.	Description	List Price	FO-#
7-0458	Shortside Hinge	\$12.39	GO-0380000

Perko Fig. 1213 Shortside Hinge



- Chrome plated zinc alloy.
- Pin height 1-1/2".
- Open width 2-1/2".
- Shortside width 3/4". Uses #8 fasteners.
- Sold per pair.

Order No.	Mfg. No. / Description	List Price	FO-#
533338	(1213 DP1 CHR)	\$29.09	FO-6302000

Perko Fig. 942 Offset Hinge



- Chrome plated zinc alloy.
- Open width 1-1/2".
- Pin height 1-1/2".
- Offset 3/8".
- Uses #8 fasteners.
- Sold per pair.

Order No.	Mfg. No. / Description	List Price	FO-#
543746	(0942 DPO CHR)	\$28.59	FO-1002000

Perko Fig. 988 Offset Shortside Hinge



- Chrome plated bronze.
- Open width 2-1/4".
- Pin height 1-1/2".
- Shortside width 3/4", offset 3/8".
- Uses #8 fasteners.
- Sold per pair.

Order No.	Mfg. No. / Description	List Price	FO-#
544230	(0988 DP1 CHR)	\$87.49	FO-4216000

Marpac Offset Shortside Hinge



- Polished, stamped type 304 stainless steel.
- Thickness .060" gauge.
- Open width 2", pin length 1-1/2", offset 3/8".
- Uses #8 fasteners.
- Sold per pair.

Order No.	Description	List Price	FO-#
7-1005	Offset Shortside Hinge	\$14.09	FO-6890000

Perko Fig. 1214 Offset Shortside Hinge



- Chrome plated zinc alloy.
- Open width 2-1/2". Pin height 1-1/2".
- Shortside width 3/4", offset 3/8".
- Uses #8 fasteners.
- Sold per pair.

Order No.	Mfg. No. / Description	List Price	FO-#
533340	(1214 DP1 CHR)	\$29.09	FO-6302000

- Electronics
- Trolling Motors
- Instruments
- Electrical
- Lighting
- Anchor & Dock
- Safety
- Steering, Controls
- Pumps
- Fuel System
- Seating & Pedestals
- Trailering
- Tops & Covers
- Perform.
- Propellers
- Engine & Care
- Cleaning & Care
- Paint & Paint Acc.
- Fun & Flotation
- Topside Acc.
- Cockpit & Deck
- Hardware, Fasteners
- Camouflage
- Misc.
- Comm.

Marpac Flush Mount Concealed Hinge



- Stamped type 304 stainless steel with satin finish.
- Dimensions: 2-3/4" x 1-7/8".
- Sold per pair.

Order No.	Description	List Price
7-0105	Concealed Hinge	\$10.09 FO-6070000

Marpac Strap Hinges



- Polished, cast 316 stainless steel.
- Uses #10 fasteners.
- Sold per pair.

Order No.	Description	List Price
7-0500	Dimensions: 4" x 1" (4 Screw Holes)	\$20.79 GO-3931000
7-0501	Dimensions: 6-3/8" x 1" (6 Screw Holes)	\$23.99 GO-7061000

Marpac Chrome Plated Brass Motor Box Hinge



- Heavy duty chrome plated brass.
- Removable.
- Length 4", width at pin: 2-1/8".
- Uses #14 fasteners (not included).

Order No.	Description	List Price
7-0211	Motor Box Hinge	\$15.59 FO-1901000

Piano Hinges



- Sold in 18" lengths only.

STAINLESS STEEL - .040 GAUGE		
Order No.	Mfg. No. / Description	List Price
2000934	(SS040125-18) Open Width 1-1/4"	\$9.99 FO-9960000
2000935	(SS040150-18) Open Width 1-1/2"	\$9.99 FO-9960000
2000936	(SS040200-18) Open Width 2"	\$13.99 FO-9790000

ALUMINUM - .040 GAUGE		
Order No.	Mfg. No. / Description	List Price
2000931	(A040150-18) Open Width 1-1/2"	\$8.29 HO-7940000
2000932	(A040200-18) Open Width 2"	\$7.99 FO-9550000

Perko Fig. 271 Inset Hinge



- Chrome plated stamped brass.
- Semi-concealed for inset doors.
- Dimensions: 2-3/4" x 2-1/2". Inset 3/8".
- Uses #4 fasteners.
- Sold per pair.

Order No.	Mfg. No. / Description	List Price
536613	(0271 DPO CHR) Display	\$35.09 FO-6542000
536601	(0271 000 CHR) Bulk	\$33.39 FO-7332000

Marpac Strap Hinges



- Polished, stamped type 304 stainless steel.
- Uses #8 fasteners.
- Sold per pair.

Order No.	Description	List Price
7-0456	Dimensions: 6" x 1-3/16"	\$13.79 GO-4290000

LIMITED QUANTITIES

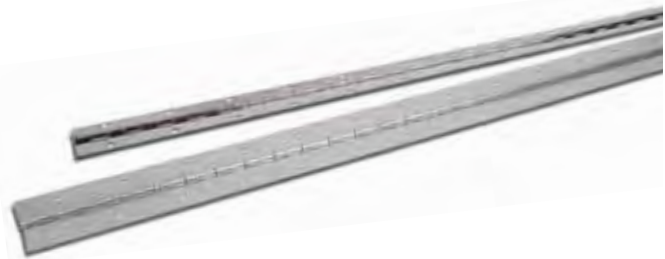
Marpac Hatch Hinge



- Polished stainless steel.
- Length 2-7/8", width 2-5/8", height 1-5/32".
- Uses #10 fasteners.

Order No.	Description	List Price
7-0213	Hatch Hinge	\$33.69 FO-8532000

Continuous "Piano" Hinges



ALUMINUM - MILL FINISH		
• 3/16" holes drilled on 4" centers. .040 gauge.		
Order No.	Description	List Price
740515	Open Width 1-1/2" Length 6'	\$15.69 HO-1490000
740527	Open Width 2" Length 6'	\$23.89 HO-3341000

TYPE 304 STAINLESS STEEL BRIGHT ANNEALED - .040" GAUGE		
• Drilled and countersunk on 2" centers. Length 6'		
Order No.	Description	List Price
740565	Open Width 1-1/4" (Uses #5 Fasteners)	\$37.69 HO-1622000
740577	Open Width 1-1/2" (Uses #6 Fasteners)	\$43.79 HO-7262000
740589	Open Width 2" (Uses #6 Fasteners)	\$50.09 HO-5003000

Electronics

Trolling Motors

Instruments

Electrical

Lighting

Anchor & Dock

Safety

Steering, Controls

Pumps

Fuel System

Seating & Pedestals

Trailering

Tops & Covers

Perform.

Propellers

Engine & Care

Cleaning & Care

Paint & Paint Acc.

Fun & Flotation

Topside Acc.

Cockpit & Deck

Hardware, Fasteners

Camouflage

Misc.

Comm.

Lenco Electric Hatch Lifts

12-Volt Models

12-Volt models with 2' leads and deutsch connectors. Includes high impact, corrosion proof mounting brackets and stainless steel pull pins.

Lenco Electric Hatch Lifts / 12-Volt Models

Order No.	Lenco Part#	Superseded Part#	L.O.A. Retract	Approx. Stroke	L.O.A. Extend	Price
249789	20760-001	HL-400	15"	4"	19"	\$453.99 G0-7140300
249804	20764-001	HL-800S	20"	8"	28"	\$483.99 G0-7242300
252748	20768-001	HL-1200S	24"	12"	36"	\$514.69 G0-4844300
252750	20774-001	HL-1600S	29"	16"	45"	\$572.29 G0-3438300
252774	20778-001	HL-2000S	33"	20"	53"	\$622.89 G0-4371400
249878	20782-001	HL-2400S	37"	24"	61"	\$675.79 G0-8725400
249880	20784-001	HL-2400	41"	24"	65"	\$675.79 G0-8725400

Lenco Electric Hatch Lifts / 24-Volt Models

Order No.	Lenco Part#	Superseded Part#	L.O.A. Retract	Approx. Stroke	L.O.A. Extend	Price
249664	20765-001	HL-800S	20"	8"	28"	\$526.49 G0-5725300
249688	20769-001	HL-1200S	24"	12"	36"	\$562.89 G0-4177300
249703	20775-001	HL-1600S	29"	16"	45"	\$628.79 G0-9212400
249727	20779-001	HL-2000S	33"	20"	53"	\$676.89 G0-2535400
249741	20783-001	HL-2400S	37"	24"	61"	\$725.09 G0-1858400

L.O.A. = Length overall, measuring from top bracket to bottom bracket.

Features include:

- ▶ Clear anodized aluminium tubing
- ▶ Clutchless ball screw design will not drift, never binds and runs in sync on dual lift applications
- ▶ Inline motor design delivers over **500 lbs** of force
- ▶ Water resistant & non-corrosive materials
- ▶ Ball screw spins freely when hatch is fully opened or closed eliminating limit switches and burned out motors
- ▶ Powdered metal gears for strength and precision
- ▶ Stainless steel ram locks in any position
- ▶ CE-certified, ignition protected and ABYC compliant
- ▶ 20 AMP circuit breaker & 20 AMP rated switch required

Please visit lencomarine.com for hatch lift mounting specifications.



HATCH LIFT EXTENSION HARNESSES & OTHER ACCESSORIES AVAILABLE BELOW

Order No.	Lenco Part#	Description	Price
252577	15096-001	For Single hatch lift applications Clamshell packaged	\$73.29 G0-0194000
252580	15098-001	For Dual hatch lift applications Clamshell packaged	\$96.99 G0-8946000

Single Rocker Switch for Hatch Lifts

Single Rocker Switch for hatch lifts with two 30" non-terminated power leads. For single and dual hatch lift applications



Lenco Deutsch Connected Actuator Extension Harnesses

Replacement Part

Order No.	Lenco Part #	Description	Price
252659	30133-002D	14' 16-AWG Clamshell Packaged	\$39.79 G0-6662000
252661	30133-103D	20' 14-AWG Clamshell Packaged	\$48.19 G0-9223000
252936	30142-201	26' 12-AWG Poly Bagged	\$89.79 G0-6106000

Deutsch Connected Actuator Extension Harnesses

To be used with all Lenco Electric Hatch Lift Models
ABYC Compliant
(Sold individually - one needed per actuator)



Stainless Steel Non-Locking Slide Bracket

For use with Hatch Lifts

Order No.	Lenco Part #	Description	Price
249999	70381-001	Stainless Steel Slide Bracket	\$73.29 G0-0194000

In case of power failure, this bracket allows you to pull the hatch open a minimum of 5" in order to remove bolt for access.



Electronics

Trolling Motors

Instruments

Electrical

Lighting

Anchor & Dock

Safety

Steering, Controls

Pumps

Fuel System

Seating & Pedestals

Trailer

Tops & Covers

Perform.

Propellers

Engine & Care

Cleaning & Care

Paint & Paint Acc.

Fun & Flotation

Topside Acc.

Cockpit & Deck

Hardware, Fasteners

Camouflage

Misc.

Comm.

Marpac Gas Spring Hatch Lifts



STEEL

Order No. / Description	Approx. Stroke	Extended Length	Output Force	Shaft Dia.	List Price	
7-1670 Retracted Length 5.5"	2"	7.5"	20 lbs.	6mm	\$14.09	FO-6890000
7-1671 Retracted Length 5.5"	2"	7.5"	40 lbs.	6mm	\$14.09	FO-6890000
7-1673 Retracted Length 7"	3"	10"	20 lbs.	6mm	\$14.39	FO-7001000
7-1674 Retracted Length 7"	3"	10"	40 lbs.	6mm	\$14.39	FO-7001000
7-1676 Retracted Length 8.5"	3.5"	12"	20 lbs.	6mm	\$14.59	FO-1201000
7-1677 Retracted Length 8.5"	3.5"	12"	30 lbs.	6mm	\$14.59	FO-1201000
7-1679 Retracted Length 9.5"	5.5"	15"	20 lbs.	6mm	\$14.99	FO-9401000
7-1680 Retracted Length 9.5"	5.5"	15"	30 lbs.	6mm	\$14.99	FO-9401000
7-1681 Retracted Length 9.5"	5.5"	15"	40 lbs.	6mm	\$14.99	FO-9401000
7-1682 Retracted Length 9.5"	5.5"	15"	60 lbs.	6mm	\$14.99	FO-9401000
7-1685 Retracted Length 10.25"	6.75"	17"	20 lbs.	6mm	\$15.29	FO-0701000
7-1686 Retracted Length 10.25"	6.75"	17"	30 lbs.	6mm	\$15.29	FO-0701000
7-1687 Retracted Length 10.25"	6.75"	17"	40 lbs.	6mm	\$15.29	FO-0701000
7-1688 Retracted Length 10.25"	6.75"	17"	60 lbs.	6mm	\$15.29	FO-0701000
7-1689 Retracted Length 10.25"	6.75"	17"	90 lbs.	8mm	\$15.29	FO-0701000
7-1691 Retracted Length 12"	7.68"	20"	20 lbs.	6mm	\$15.59	FO-1901000
7-1692 Retracted Length 12"	7.68"	20"	30 lbs.	6mm	\$15.59	FO-1901000
7-1693 Retracted Length 12"	7.68"	20"	40 lbs.	6mm	\$15.59	FO-1901000
7-1694 Retracted Length 12"	7.68"	20"	60 lbs.	6mm	\$15.59	FO-1901000
7-1695 Retracted Length 12"	7.68"	20"	80 lbs.	8mm	\$15.59	FO-1901000
7-1696 Retracted Length 12"	8"	20"	90 lbs.	8mm	\$15.59	FO-1901000
7-1697 Retracted Length 12"	8"	20"	120 lbs.	8mm	\$15.59	FO-1901000

STAINLESS STEEL

Order No. / Description	Approx. Stroke	Extended Length	Output Force	Shaft Dia.	List Price	
7-1386 Retracted Length 5.5"	2"	7.5"	20 lbs.	6mm	\$23.69	FO-8561000
7-1375 Retracted Length 7"	3"	10"	40 lbs.	8mm	\$29.89	GO-3002000
7-1387 Retracted Length 7"	3"	10"	40 lbs.	6mm	\$25.19	FO-3671000
7-1388 Retracted Length 7"	3"	10"	60 lbs.	6mm	\$26.29	GO-1671000
7-1389 Retracted Length 8"	4"	12"	30 lbs.	6mm	\$29.79	GO-6991000
7-1377 Retracted Length 9.5"	5.5"	15"	20 lbs.	8mm	\$33.99	FO-9732000
7-1390 Retracted Length 9.5"	5.5"	15"	40 lbs.	6mm	\$30.29	GO-9202000
7-1379 Retracted Length 9.5"	5.5"	15"	60 lbs.	8mm	\$35.49	GO-8732000
7-1392 Retracted Length 10.2"	7"	17.2"	20 lbs.	6mm	\$30.29	FO-0212000
7-1381 Retracted Length 10.2"	7"	17.2"	40 lbs.	8mm	\$37.29	GO-8942000
7-1394 Retracted Length 12"	8"	20"	60 lbs.	6mm	\$32.99	FO-9032000
7-1383 Retracted Length 12"	8"	20"	90 lbs.	8mm	\$39.39	FO-7572000
7-1385 Retracted Length 12"	8"	20"	120 lbs.	8mm	\$39.39	FO-7572000

BRACKETS FOR GAS SPRING HATCH LIFTS - SOLD IN PAIRS

- Corrosion resistant stainless steel.
- Uses #10 fasteners (Not included).

Order No.	Description	List Price	
7-1396	Flat Mount with 10mm Ball Stud	\$12.09	FO-6480000
7-1397	90° Mount with 10mm Ball Stud	\$11.59	FO-1180000
7-1398	90° Mount with 10mm Ball Stud	\$14.89	FO-2401000



Ameritool Black Steel Mounting Brackets for Gas Springs



2350214



2350216

- Black steel.
- 10mm ball stud.
- Sold each.

Order No.	Mfg. No. / Description	List Price	
2350214 (BR-213B)	Angle Bracket with 3 Holes	\$1.89	FO-2310000
2350216 (BR-204B)	Angle Bracket with 2 Holes	\$1.79	FO-5210000

Ameritool Zinc Plated Steel Ball Stud Mount for Gas Springs



- Zinc plated steel.
- 10mm ball stud.
- 5/16-18 thread.

Order No.	Mfg. No. / Description	List Price	
2350218 (BSZ-10E)		\$6.49	FO-4540000

- Socket End Style.
- The ideal solution for lifting, lowering and counterbalancing weight.
- The gas spring is a self-contained, nitrogen-driven counterbalance product which provides uniform handle forces, non-catastrophic failure and many years of service.
- Because energy is provided through gas pressure, our gas springs give you repeatable, unvarying performance which is superior to mechanical, spring or damper type products.

- Electronics
- Trolling Motors
- Instruments
- Electrical
- Lighting
- Anchor & Dock
- Safety
- Steering, Controls
- Pumps
- Fuel System
- Seating & Pedestals
- Trailering
- Tops & Covers
- Perform.
- Propellers
- Engine & Care
- Cleaning & Care
- Paint & Paint Acc.
- Fun & Flotation
- Topside Acc.
- Hardware, Fasteners
- Camouflage
- Misc.
- Comm.

Attwood Threaded Stud

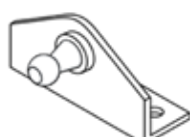


- Stainless steel.
- Used as an alternative to mounting brackets, threaded studs can be mounted directly to hatches or other mounting surfaces in applications where the mounting surface is made of metal or another material with the strength to withstand the forces of a gas spring attachment point.
- With 10mm ball end.
- Length 3/4".

NEW PRODUCT

Order No. Mfg. No. / Description List Price
1145460 (SL75-SSBS-1) **\$6.29** HO-7730000

Attwood Mounting Bracket



1145406



2350217

- Used as attachment points for gas springs on hatches and other mounting surfaces where:
 - Mounting surface material is not strong enough to support direct attachment of gas spring using a threaded stud.
 - The angle and position of the attachment point requires the need for a mounting bracket.

SL40 BRACKET

- Stainless steel.
- Style: Flat.
- Pem type: 10mm ball.
- Pem direction: Forward.
- Mounting holes: 2.

LIMITED QUANTITIES

Order No. Mfg. No. / Description List Price
1145406 (SL40SSP3-7) **\$8.79** GO-9850000

SL65 BRACKET

- Black painted.
- Pem type: 10mm ball.
- Pem direction: Forward.

Order No. Mfg. No. / Description List Price
2350217 (SL65BP3-1) **\$3.29** FO-0320000

Attwood Gas Springs - Ni-Slide Series



Ball Socket - Stainless Steel



Composite / Metal End Fitting



Blade End

- Popular gas springs designed for marine, RV and automotive applications.
- Special Ni-Slide rod coating for excellent corrosion resistance.
- These gas springs can be used in salt water areas.
- The 6mm x 15mm (rod & cylinder dimensions) are lighter duty to standard applications.
- The 8mm x 18mm are for standard to heavy duty applications.

6 X 15 - 6MM ROD x 15MM CYLINDER

Order No.	Mfg. No.	Extended Length	Compressed Length	Stroke	End Fitting Type	Output Force	List Price	
1145434	(SL11-10-1)	7.50"	5.25"	2.25"	10mm Socket	10 lbs.	\$19.39	HO-3611000
1145435	(SL11-20-1)	7.50"	5.25"	2.25"	10mm Socket	20 lbs.	\$19.39	HO-3611000
1145432	(SL10-10-1)	10.00"	7.00"	3.00"	10mm Socket	10 lbs.	\$19.39	HO-3611000
1145421	(SL10-20-1)	10.00"	7.00"	3.00"	10mm Socket	20 lbs.	\$19.39	HO-3611000
1145433	(SL10-30-1)	10.00"	7.00"	3.00"	10mm Socket	30 lbs.	\$19.39	HO-3611000
1145040	(SL10-40-5)	10.00"	7.00"	3.00"	10mm Socket	40 lbs.	\$20.09	G1-6031000
1145120	(SL13-20-5)	15.00"	9.50"	5.50"	10mm Socket	20 lbs.	\$20.09	G1-6031000
1145160	(SL13-60-5)	15.00"	9.50"	5.50"	10mm Socket	60 lbs.	\$20.09	G1-6031000
1145230	(SL16-30-5)	17.20"	10.20"	7.00"	10mm Socket	30 lbs.	\$20.09	G1-6031000
1145330	(SL14-30-5)	20.00"	12.00"	8.00"	10mm Socket	30 lbs.	\$20.09	G1-6031000
1145340	(SL14-40-5)	20.00"	12.00"	8.00"	10mm Socket	40 lbs.	\$20.09	G1-6031000
1145360	(SL14-60-5)	20.00"	12.00"	8.00"	10mm Socket	60 lbs.	\$20.09	G1-6031000

8 X 18 - 8MM ROD x 18MM CYLINDER

Order No.	Mfg. No.	Extended Length	Compressed Length	Stroke	End Fitting Type	Output Force	List Price	
1145440	(SL31-20-1)	7.50"	5.25"	2.25"	10mm Socket	20	\$20.79	HO-7421000
1145396	(SL31-20-5)	7.50"	5.25"	2.25"	10mm Socket	20	\$20.09	G1-6031000
1145397	(SL31-30-5)	7.50"	5.25"	2.25"	10mm Socket	30	\$20.09	G1-6031000
1145376	(SL31-40-5)	7.50"	5.25"	2.25"	10mm Socket	40	\$20.09	G1-6031000
1145391	(SL30-20-5)	10.00"	7.00"	3.00"	10mm Socket	20	\$20.09	G1-6031000
1145392	(SL30-40-5)	10.00"	7.00"	3.00"	10mm Socket	40	\$20.09	G1-6031000
1145439	(SL30-60-5)	10.00"	7.00"	3.00"	10mm Socket	60	\$20.09	G1-6031000
1145441	(SL32-20-5)	10.50"	7.50"	3.00"	10mm Socket	20	\$20.09	G1-6031000
1145398	(SL32-30-5)	10.50"	7.50"	3.00"	10mm Socket	30	\$20.09	G1-6031000
1145444	(SL35-30-1)	12.04"	8.46"	3.58"	10mm Socket	30	\$20.79	HO-7421000
1145377	(SL35-30-5)	12.04"	8.46"	3.58"	10mm Socket	30	\$20.09	G1-6031000
1145378	(SL35-40-5)	12.04"	8.46"	3.58"	10mm Socket	40	\$20.09	G1-6031000
1145399	(SL33-20-5)	15.00"	9.50"	5.50"	10mm Dia. Blade	20	\$20.09	G1-6031000
1145442	(SL33-30-5)	15.00"	9.50"	5.50"	10mm Dia. Blade	30	\$20.09	G1-6031000
1145393	(SL33-40-5)	15.00"	9.50"	5.50"	10mm Dia. Blade	40	\$20.09	G1-6031000
1145400	(SL33-60-5)	15.00"	9.50"	5.50"	10mm Dia. Blade	60	\$20.09	G1-6031000
1145404	(SL36-20-5)	17.20"	10.20"	7.00"	10mm Socket	20	\$20.09	G1-6031000
1145394	(SL36-40-5)	17.20"	10.20"	7.00"	10mm Socket	40	\$20.09	G1-6031000
1145446	(SL36-50-5)	17.20"	10.20"	7.00"	10mm Socket	50	\$20.09	G1-6031000
1145447	(SL36-60-5)	17.20"	10.20"	7.00"	10mm Socket	60	\$20.09	G1-6031000
1145379	(SL36-70-5)	17.20"	10.20"	7.00"	10mm Socket	70	\$20.09	G1-6031000
1145448	(SL36-80-5)	17.20"	10.20"	7.00"	10mm Socket	80	\$20.09	G1-6031000
1145405	(SL36-90-5)	17.20"	10.20"	7.00"	10mm Socket	90	\$20.09	G1-6031000
1145401	(SL34-20-5)	20.00"	12.00"	8.00"	10mm Socket	20	\$20.09	G1-6031000
1145402	(SL34-30-5)	20.00"	12.00"	8.00"	10mm Socket	30	\$20.09	G1-6031000
1145403	(SL34-40-5)	20.00"	12.00"	8.00"	10mm Socket	40	\$20.09	G1-6031000
1145395	(SL34-60-5)	20.00"	12.00"	8.00"	10mm Socket	60	\$20.09	G1-6031000
1145380	(SL34-80-5)	20.00"	12.00"	8.00"	10mm Socket	80	\$20.09	G1-6031000
1145390	(SL34-90-5)	20.00"	12.00"	8.00"	10mm Socket	90	\$20.09	G1-6031000
1142320	(SL34-120-5)	20.00"	12.00"	8.00"	10mm Socket	120	\$20.09	G1-6031000
1145438	(SL3-60-5)	20.00"	12.00"	8.00"	10mm Dia. Blade	60	\$18.69	FO-8031000

10 X 22 - 10MM ROD x 22MM CYLINDER

Order No.	Mfg. No.	Extended Length	Compressed Length	Stroke	End Fitting Type	Output Force	List Price	
1145436	(SL29-30-1)	36.30"	21.10"	15.20"	13mm Socket	30 lbs.	\$25.49	GO-8071000
1145437	(SL29-40-1)	36.30"	21.10"	15.20"	13mm Socket	40 lbs.	\$25.49	GO-8071000
1145449	(SL29-80-1)	36.30"	21.10"	15.20"	13mm Socket	80 lbs.	\$25.49	GO-8071000

- Electronics
- Trolling Motors
- Instruments
- Electrical
- Lighting
- Anchor & Dock
- Safety
- Steering, Controls
- Pumps
- Fuel System
- Seating & Pedestals
- Trailer
- Tops & Covers
- Perform.
- Propellers
- Engine & Care
- Cleaning & Care
- Paint & Paint Acc.
- Fun & Flotation
- Topside Acc.
- Cockpit & Deck
- Hardware, Fasteners
- Camouflage
- Misc.
- Comm.

White Cap Lid-Lift Gas Springs



- Heavy duty steel coated with heat cured paint.
- O-ring insures proper sealing to force oil towards the orifice piston.
- Piston assembly provides precise control during the extension stroke.
- Sold individually.

Order No.	Mfg. No.	Extended	Compressed	Supports	List Price	
2011540	(G-3120C)	Extended 7.5"	Compressed 5.5"	Supports 20 lbs.	\$24.99	HO-9941000
2011541	(G-3140C)	Extended 7.5"	Compressed 5.5"	Supports 40 lbs.	\$24.99	HO-9941000
2011542	(G-3320C)	Extended 15"	Compressed 9.5"	Supports 20 lbs.	\$24.99	HO-9941000
2011543	(G-3330C)	Extended 15"	Compressed 9.5"	Supports 30 lbs.	\$24.99	HO-9941000
2011546	(G-3360C)	Extended 15"	Compressed 9.5"	Supports 60 lbs.	\$24.99	HO-9941000
2011558	(G-3620C)	Extended 17"	Compressed 10.25"	Supports 20 lbs.	\$24.99	HO-9941000
2011559	(G-3630C)	Extended 17"	Compressed 10.25"	Supports 30 lbs.	\$24.99	HO-9941000
2011562	(G-3660C)	Extended 17"	Compressed 10.25"	Supports 60 lbs.	\$24.99	HO-9941000
2011550	(G-3440C)	Extended 20"	Compressed 12"	Supports 40 lbs.	\$24.99	HO-9941000
2011551	(G-3460C)	Extended 20"	Compressed 12"	Supports 60 lbs.	\$24.99	HO-9941000
2011553	(G-3480C)	Extended 20"	Compressed 12"	Supports 80 lbs.	\$24.99	HO-9941000
2011547	(G-34120C)	Extended 20"	Compressed 12"	Supports 120 lbs.	\$24.99	HO-9941000

ZINC PLATED STEEL BRACKETS - SOLD EACH

Order No.	Mfg. No. / Description	List Price	
2011532	(G-1020C) 2-1/2" L x 3/4" W x 1-7/16" H	\$8.99	HO-9350000

BLACK COMPOSITE END FITTINGS - SOLD IN PAIRS

Order No.	Mfg. No. / Description	List Price	
2011533	(G-1030C) Spring Retainer	\$10.09	FO-6070000
2011535	(G-1130C) Snap-On Cap	\$9.09	FO-6360000

Uiflex AV Series Electrical Hatch Lifters



- Electromechanical products, especially designed for marine use on pleasure boats.
- They allow full or partial opening and closing of heavy engine hatches, peak tanks, hatch beams etc.
- In case of a power failure an emergency device allows for manual opening.
- Maximum load for single installations: 265 lbs., 530 lbs. for dual installation.
- 12 volt.

NEW PRODUCT

Order No.	Mfg. No.	Stroke	Full Closed Actuator	External Diameter	List Price	
3711801	(AV4512)	18"	26.6"	1.9"	\$825.79	FO-5087500
3711808	(AV3012)	12"	26.6"	1.9"	\$780.69	FO-8464500

T-H Marine Lid and Hatch Support Springs



- Features a stainless steel spring that snaps straight to a support position when opened.
- The stainless steel spring then supports the lid, hatch or cover in the open position.
- When closing simply deflect the spring which allows spring to bend and rotate at the mounting positions.
- Molded black nylon ends for mounting.

Order No.	Mfg. No. / Description	List Price	
641060	(LS-2-DP) Dia. 7/16", 8-1/2" L	\$21.39	FO-7941000
642368	(HS-1-DP) Dia. 5/8", 12" L	\$34.59	FO-1242000

Marpac Hatch Support Spring



- Stainless steel hatch spring holds open hatches, doors, table leaves, etc.
- Holds up to 10 lbs.
- Length 8".

Order No.	Description	List Price	
7-54208	Hatch Support Spring	\$8.19	GO-9450000

Taylor Made Windshield Support Bars



- Used as original equipment on many fine walk-thru windshields.
- Made from anodized aluminum tubing with nylon fittings.
- The fittings allow for pivot in almost every direction for easy installation.
- Sold in single units.

Order No.	Mfg. No. / Description	List Price	
723535	(1632) Length 11"	\$28.39	FO-7891000
723537	(1634) Length 12"	\$28.39	FO-7891000
723536	(1636) Length 13"	\$28.39	FO-7891000

Handi-Man Windshield Support Tubes



- Designed to fit many bow rider style boats, with walk through windshield.
- Black anodized aluminum tube resists corrosion.

Order No.	Mfg. No. / Description	List Price	
7270021	(01617) Length 10"	\$15.19	FO-3601000
7270024	(01623) Length 13"	\$15.19	FO-3601000
7270025	(01625) Length 14"	\$9.89	FO-2960000

Taylor Made White Twin-Flap Deck Channel



- Punched to accommodate hidden fasteners or external angles.
- 1/4" wide and 5/8" high.
- Length 110".

Order No. Mfg. No. / Description
M749-3650 (826500)

List Price
\$50.79 FO-5553000

LIMITED
 QUANTITIES

Perko Figs. 1290 and 1291 Windshield Adjusters



Note: Illustration is port side.

- Chrome plated zinc alloy.
- Black polymer knob.
- Length overall: 12".
- Adjustment length: 9-1/2".
- Uses #8 fasteners.
- Sold per pair (Port and Starboard).

Order No. Mfg. No. / Description
534087 (1290 DPO CHR) Side Mount
534102 (1291 DPO CHR) Offset Mount

List Price
\$109.09 FO-6367000
\$109.09 FO-6367000

Perko Fig. 769 Hatch Fastener or Windshield Keeper



- Chrome plated brass and zinc alloy.
- Black polymer handle.
- Base dimensions: 1-1/2" x 5/8".
- Uses #8 fasteners.

Order No. Mfg. No. / Description
542123 (0769 DPO CHR)

List Price
\$74.19 FO-3915000

Perko Fig. 697 Hatch Fastener or Windshield Keeper



- Chrome plated brass and zinc alloy.
- Keeper: 1-1/2" x 3/4".
- Bracket: 1-1/2" x 5/8".
- Bolt length: 1-1/2".
- Uses #8 fasteners.

Order No. Mfg. No. / Description
541385 (0697 DPO CHR)

List Price
\$47.19 FO-3033000

Marpac Windshield Fastener



- Black nylon.
- Windshield quick release fasteners make removing and installing windshield easy.

Order No. Description
7-54211 Windshield Fastener

List Price
\$9.59 FO-1760000

T-H Marine Windshield Fastener



- Molded of UV stable polymer that will not corrode.
- The base mounts with two screws to the boat and the quick twist fastener passes thru the windshield.
- Includes: Windshield fasteners, wing nut head and base.

Order No. Mfg. No. / Description
642374 (WSH-1PR-DP) Sold Per Pair
3428880 (WSH-1) Sold Each

List Price
\$17.89 FO-2521000
\$9.09 HO-5450000

White Cap Inside Eye End Bracket



- Black nylon.
- 3/4".

Order No. Mfg. No. / Description
3802592 (3475BP)

List Price
\$5.79 FO-5040000

White Cap Windshield Thumb Latch



- Black nylon.

Order No. Mfg. No. / Description
3802579 (3035BP)

List Price
\$4.29 FO-0030000

Handi-Man Windshield Clip



- 7/8".

Order No. Mfg. No. / Description
3070334 (560251)

List Price
\$12.69 HO-1670000

Taylor Made Windshield Male Snap Adapter



- Molded nylon insert fits into trim grooves .200" wide by .500" deep and accepts standard male screw-in snaps.
- Used to secure cockpit covers, bow covers, bimini tops, etc.
- 6 sets of inserts and snaps included.

Order No. Mfg. No. / Description
3450407 (407)

List Price
\$15.99 JO-9780000

Electronics

Trolling Motors

Instruments

Electrical

Lighting

Anchor & Dock

Safety

Steering, Controls

Pumps

Fuel System

Seating & Pedestals

Trailer

Tops & Covers

Perform.

Propellers

Engine & Care

Cleaning & Care

Paint & Paint Acc.

Fun & Flotation

Topside Acc.

Cockpit & Deck

Hardware, Fasteners

Camouflage

Misc.

Comm.

Taylor Made Side Vent Handle



- Designed to replace most original handles on side vent windows.
- Designed to fit side windows having exactly 1/4" mounting hole.
- Sold in pairs (left and right).

Order No. Mfg. No. / Description List Price
719620 (11616) **\$29.29** FO-0502000

Taylor Made Door Pads



- Adhesive backed rubber, 3/4" x 3/4", gives protection when applied to windshield doors.
- 2 per pack.

Order No. Mfg. No. / Description List Price
M749-0634 (1167) **\$5.99** FO-9140000

LIMITED QUANTITIES

Marpac Stainless Steel Hold Down Clamp



- Stainless steel.
- Dimensions: 3" L x 1-1/2" W.

Order No. Description List Price
7-0223 Hold Down Clamp **\$28.89** GO-6391000

Marpac Stainless Steel Hold Down Clamp



- Stainless steel.
- 90° angle mounting
- Dimensions: 2-1/2" L x 1-1/2" W.

Order No. Description List Price
7-0224 Hold Down Clamp **\$28.89** GO-6391000

Marpac Chrome Plated Brass Hold Down Clamp



- Chrome plated brass.
- Heavy duty.
- Uses #10 fasteners (not included).
- Dimensions: 4" L x 1-3/4" W.

Order No. Description List Price
7-0214 Hold Down Clamp **\$16.09** GO-8701000

Attwood Padlock Eye Clamp



- Chrome finish.
- Flush mount.
- Has no exposed mounting screws.
- Accommodates padlocks with 1/4" diameter or smaller shackle.
- Rugged, secure locking device with easy-to-use flip handle.
- Closed size: 4-1/4" x 1-1/2".
- Uses (4) #8 fasteners.

Order No. Mfg. No. / Description List Price
230502 (2012A3) **\$29.39** FO-7502000

Buck Algonquin Transom Door Latch



- 316 stainless steel.
- Polish finish.
- Handle length: 6-1/4".
- Overall height: 1-1/4".
- Plate size: 1-1/2" W x 3" L.

Order No. Mfg. No. / Description List Price
260757 (70TDL625) **\$67.49** GO-2254000

Marpac T-Handle Latch



- Flexible.
- Non-corrosive, non-conductive, UV resistant materials.
- Compensates for misalignment in 3 planes.
- Built-in drag keeps latch stationary when unlatched.
- Length 4.81".

Order No. Description List Price
7-2255 T-Handle Latch **\$13.49** GO-4090000

Marpac Rubber Draw Latch



- 304 grade stainless steel catch and pin.
- Durable UV resistant TPR rubber.
- Uses (4) #8 fasteners (not included).

Order No. Description List Price
7-54151 Rubber Draw Latch **\$10.79** GO-3270000

- Electronics
- Trolling Motors
- Instruments
- Electrical
- Lighting
- Anchor & Dock
- Safety
- Steering, Controls
- Pumps
- Fuel System
- Seating & Pedestals
- Trailering
- Tops & Covers
- Perform.
- Propellers
- Engine & Care
- Cleaning & Care
- Paint & Paint Acc.
- Fun & Flotation
- Topside Acc.
- Cockpit & Deck
- Hardware, Fasteners
- Camouflage
- Misc.
- Comm.

Marpac Cast Stainless Steel Rail Fittings - 30° Round Base



- Heavy duty cast type 316 marine grade stainless steel.
- Includes set screw.
- Skin packed.

Order No.	Description	Base Diameter	List Price	
7-0178	For 7/8" OD Tubing	2-5/8"	\$17.99	GO-5021000
7-0978	For 1" OD Tubing	2-7/8"	\$18.39	GO-2321000

Marpac Cast Stainless Steel Rail Fittings - 90° Round Base



- Heavy duty cast type 316 marine grade stainless steel.
- Includes set screw.
- Skin packed.

Order No.	Description	Base Diameter	List Price	
7-0180	For 7/8" OD Tubing	2-5/8"	\$17.59	GO-9711000
7-0980	For 1" OD Tubing	2-3/4"	\$18.39	GO-2321000

Marpac Cast Stainless Steel Rail Fittings - 30° Rectangular Base



- Heavy duty cast type 316 marine grade stainless steel.
- Includes set screw.
- Skin packed.

Order No.	Description	Base Dimensions	List Price	
7-0181	For 7/8" OD Tubing	3" L x 1-3/4" W	\$17.99	GO-5021000

Marpac Cast Stainless Steel Rail Fittings - 60° Tee



- Heavy duty cast type 316 marine grade stainless steel.

Order No.	Description	List Price	
7-0202	7/8" OD Tubing	\$16.29	GO-1901000
7-1002	1" OD Tubing	\$16.29	GO-1901000

Marpac Cast Stainless Steel Rail Fittings - 90° Tee



- Heavy duty cast type 316 marine grade stainless steel.

Order No.	Description	List Price	
7-0186	7/8" OD Tubing	\$13.59	GO-1190000
7-0986	1" OD Tubing	\$14.89	GO-8990000

Marpac Cast Stainless Steel Rail Fitting - 110° Bow Form



- Heavy duty cast type 316 marine grade stainless steel.

Order No.	Description	List Price	
7-0190	7/8" OD Tubing	\$38.39	GO-2752000

Marpac Cast Stainless Steel Rail Fittings - 60° Round Base



- Heavy duty cast type 316 marine grade stainless steel.
- Includes set screw.
- Skin packed.

Order No.	Description	Base Diameter	List Price	
7-0179	For 7/8" OD Tubing	2-5/8"	\$17.09	GO-5411000
7-0979	For 1" OD Tubing	2-3/16"	\$18.39	GO-2321000

Marpac Cast Stainless Steel Rail Fittings - 60° Rectangular Base



- Heavy duty cast type 316 marine grade stainless steel.
- Includes set screw.
- Skin packed.

Order No.	Description	Base Dimensions	List Price	
7-0182	For 7/8" OD Tubing	3-1/8" L x 1-3/4" W	\$17.99	GO-5021000
7-0982	For 1" OD Tubing	3-1/2" L x 1-7/8" W	\$18.39	GO-2321000

Marpac Cast Stainless Steel Rail Fittings - 90° Rectangular Base



- Heavy duty cast type 316 marine grade stainless steel.
- Includes set screw.
- Skin packed.

Order No.	Description	Base Dimensions	List Price	
7-0183	For 7/8" OD Tubing	3" L x 1-3/4" W	\$18.19	GO-9121000
7-0983	For 1" OD Tubing	3-1/8" L x 1-7/8" W	\$18.39	GO-2321000

Marpac Cast Stainless Steel Rail Fittings - 90° Elbows



- Heavy duty cast type 316 marine grade stainless steel.

Order No.	Description	List Price	
7-0192	7/8" OD Tubing	\$15.09	GO-1101000
7-0992	1" OD Tubing	\$15.09	GO-1101000

Whitecap Chrome Plated Zinc 60° Rectangular Base Rail Fitting



- Tube outer diameter 7/8".
- Base 1-5/8" x 2-3/4".
- Uses (4) #10 fasteners.

Order No.	Mfg. No. / Description	List Price	
3802546	(S-1465C)	\$14.29	F0-0001000

Whitecap Stainless Steel Rail End (End Out) Rail Fitting

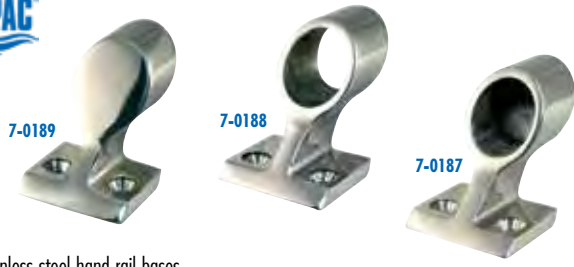


- 316 stainless steel.
- Tube outer dimensions 7/8".
- Wall thickness 1/16".

Order No.	Mfg. No. / Description	List Price	
3802595	(6048C)	\$54.29	F0-0083000

- Electronics
- Trolling Motors
- Instruments
- Electrical
- Lighting
- Anchor & Dock
- Safety
- Steering, Controls
- Pumps
- Fuel System
- Seating & Pedestals
- Trailering
- Tops & Covers
- Perform.
- Propellers
- Engine & Care
- Cleaning & Care
- Paint & Paint Acc.
- Fun & Flotation
- Topside Acc.
- Cockpit & Deck
- Hardware, Fasteners
- Camouflage
- Misc.
- Comm.

Marpac Hand Rail Bases



- 316 stainless steel hand rail bases.
- Have no set screw.

Order No.	Description	List Price
7-0187	Forward 120° For 7/8" OD Tubing Base 1-1/2"	\$12.59
7-0188	Center 60° For 7/8" OD Tubing Base 1-1/2"	\$10.69
7-0189	Aft 60° For 7/8" OD Tubing Base 1-1/2"	\$12.09
7-0987	Forward 120° For 1" OD Tubing Base 1-3/4"	\$14.49
7-0988	Center 60° For 1" OD Tubing Base 1-3/4"	\$14.49
7-0989	Aft 60° For 1" OD Tubing Base 1-3/4"	\$14.49

Perko Fig. 380 Grab Rail Posts



- Chrome plated bronze.
- Hollow, for 1" OD tubing.
- Height overall 3-3/8".
- Base OD 2-1/2".
- Uses #8 fasteners.

Order No.	Mfg. No. / Description	List Price
537994	(0380 000 CHR) End Post	\$105.29
538009	(0380 A00 CHR) Center Post	\$115.19

Marpac Transom Handle



- Heavy duty cast marine grade stainless steel.
- Use #10 fasteners.
- Dimensions: 5-7/8" L x 1-15/16" W x 1-13/16" H.

Order No.	Description	List Price
7-0648	Transom Handle	\$16.49

Springfield Diecast Stern Handle



- High-strength cast aluminum rugged construction.
- Length 7-1/2", extra smooth 6" grip.
- Distance between mounting holes: 6-5/8".
- Sold in pairs.

Order No.	Mfg. No. / Description	List Price
552415	(1840054)	\$14.49

Perko Fig. 1231 Handle



- Chrome plated zinc alloy.
- Length overall 6".
- Inside dimensions: 3-1/2" L x 1-5/16" H. Uses 1/4" fasteners.
- Sold per pair.

Order No.	Mfg. No. / Description	List Price
533617	(1231 DPO CHR)	\$30.59

Detmar Snap Cover Grab Handle



- Includes integrated, hinged caps which snap over the mount holes.
- 2-hole for 1/4" machine or wood screws.
- Dimensions: 9" L x 2-3/16" H x 1-1/8" W with 1-1/2" finger clearance.
- Black.

Order No.	Mfg. No. / Description	List Price
2000538	(12-1300)	\$5.29

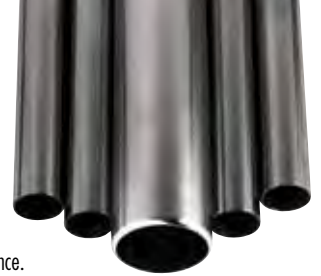
Whitecap Left 1-1/2" Center Handrail Stanchion



- 316 stainless steel.
- Tube outer diameter 7/8".
- Height 1-1/2" (Lt.).
- Uses (2) #10 fasteners.

Order No.	Mfg. No. / Description	List Price
3802590	(6215C)	\$23.39

TACO Marine Tubing for Rail Fittings



- With a closely drawn inside and outside diameter tolerance, our extruded round aluminum is an excellent product to use with rail and top fittings.
- When compared to standard extruded tube, our aluminum extruded tube maintains superior strength, stability and quality appearance.

BRITE ANODIZED FINISH ALUMINUM TUBING

Order No.	Description	List Price
741909	7/8" x 6' Wall Thickness .058"	\$49.69
741911	7/8" x 20' Wall Thickness .058"	\$106.09

HIGH POLISHED, TYPE 304 STAINLESS STEEL TUBING

Order No.	Description	List Price
741935	7/8" x 6' Wall Thickness .049"	\$69.09
741947	7/8" x 20' Wall Thickness .065"	\$222.69
741973	1" x 6' Wall Thickness .049"	\$69.49
741985	1" x 20' Wall Thickness .065"	\$243.29

Perko Fig. 775 Handle



- Chrome plated bronze.
- Length overall 4-1/4".
- Length inside 2-1/2". Height inside 7/8".
- Uses #6 fasteners.
- Sold per pair.

Order No.	Mfg. No. / Description	List Price
547452	(0775 DP1 CHR)	\$76.49

T-H Marine Molded Boat Grab Handles



- Molded, UV resistant grab handles.
- Soft overmold on firm handle.
- Textured for sure grip.
- Rubberized ergonomic feel.
- Hidden fasteners.
- Center of screw to center of screw measures 7-1/4".

Order No.	Mfg. No. / Description	List Price
327318	(GHB-1-DP) Black	\$16.79
327319	(GHB-1FW-DP) White	\$16.69

SPECIAL HANDLING MAY APPLY



- Electronics
- Trolling Motors
- Instruments
- Electrical
- Lighting
- Anchor & Dock
- Safety
- Steering, Controls
- Pumps
- Fuel System
- Seating & Pedestals
- Trailering
- Tops & Covers
- Perform.
- Propellers
- Engine & Care
- Cleaning & Care
- Paint & Paint Acc.
- Fun & Flotation
- Topside Acc.
- Cockpit & Deck
- Hardware, Fasteners
- Camouflage
- Misc.
- Comm.

White Cap 12" Studded Handrails



- 304 stainless steel.
- Length 12".
- Stud post 1-1/2".

Order No.	Mfg. No. / Description	List Price	
2011651	(S-7091P) Includes 1/4"-20 Studs	\$61.49	FO-4034000
2011653	(S-7094P) No Studs, Requires 1/4" Fastener	\$31.49	FO-4022000

Attwood Flexible Grab Handle



- Constructed from soft polypropylene webbing over a semi-rigid core.
- All materials are non-corrosive, UV stable and mildew-resistant.
- With an over-molded grip.
- They meet the ABYC H-41 standard for strength: Withstand a load of 400 lbs. in any direction.
- Length 10", width 1.2".
- Uses (4) #12 fasteners.

Order No.	Mfg. No. / Description	List Price	
232809	(2061-5)	\$12.99	FO-9090000

NEW PRODUCT

Marpac Stainless Steel Hollow Base Cleats



- Polished stainless steel.

Order No.	Description		List Price	
7-0169	Length 4-1/2"	Fastens with 1/4" Screws	\$12.59	G0-4480000
7-0170	Length 6"	Fastens with 1/4" Screws	\$19.29	G0-2921000
7-0171	Length 8"	Fastens with 1/4" Screws	\$30.09	G0-6102000
7-0172	Length 10"	Fastens with 5/16" Screws	\$50.89	G0-0143000

Perko Fig. 530 Aluminum Open Base Cleats



- Heavy duty aluminum.

Order No.	Mfg. No. / Description	List Price	
540472	(0530 Q08 ALU) Length 8"	\$51.99	FO-9363000
540484	(0530 O10 ALU) Length 10"	\$76.69	FO-8635000
540496	(0530 O12 ALU) Length 12"	\$123.29	FO-0368000

Marpac Zamak Open Base Cleats



- Traditional style chrome plated zamak cleat. Open base.
- Uses #8 fasteners (Not included).

Order No.	Description	List Price	
7-54032	Length 4-1/2"	\$5.99	G0-1040000
7-54034	Length 6"	\$7.89	G0-9250000

Perko Fig. 1326 Open Base Cleat

- Chrome plated zinc alloy with black polymer base.
- Length 5-3/4". Base dimensions: 3-5/8" x 7/8".

Order No.	Mfg. No. / Description	List Price	
5315076	(1326 DP2 CHR)	\$23.89	FO-2761000



JIF Marine Handrails



- Durable stainless steel 304 handrail.
- Made with 5/16" x 2" studs.
- Mounting hardware included

Order No.	Mfg. No. / Description	List Price	
2187016	(ESV12) Length 12"	\$35.09	HO-5012000
2187017	(ESV18) Length 18"	\$41.09	HO-5642000
2187018	(ESV24) Length 24"	\$48.99	HO-9392000

LIMITED QUANTITIES

Marpac Galvanized Standard Dock Cleats



- Hot dipped galvanized gray iron.
- Measured from tip to tip.

Order No.	Description	List Price	
7-2290B	Length 4"	\$1.19	G0-0800000
7-2292B	Length 6"	\$1.99	G0-3310000
7-2294B	Length 8"	\$6.49	G0-5340000
7-2296B	Length 10"	\$8.99	G0-2060000
7-2298B	Length 12"	\$13.39	G0-7980000

Buck Algonquin Stainless Steel Open Base Cleat



- Polished 316 stainless steel.
- Predrilled with four holes.
- Base dimensions: 1-3/8" W x 4" L.
- Overall length 14-7/8", overall height 3-15/16".

Order No.	Mfg. No. / Description	List Price	
263378	(70COBS1500)	\$283.09	G0-7698100

Perko Fig. 545 Aluminum Plain Finished Cleats



540725



540737

- Pressure cast aluminum.

Order No.	Mfg. No. / Description	List Price	
540725	(0545 DP6 ALU) Closed Base Length 6"	\$20.79	FO-5541000
540737	(0545 DP8 ALU) Open Base Length 8"	\$28.39	FO-7891000

Perko Chromalex® Cleats



- Chrome plated zinc alloy with black polymer base.
- Open base.

Order No.	Mfg. No. / Description	List Price	
534277	(1306 DP1 CHR) Length 4-1/2"	Sold Per Pair \$31.99	FO-9322000
534289	(1306 DP2 CHR) Length 6"	Sold Each \$28.29	FO-0891000

Electronics

Trolling Motors

Instruments

Electrical

Lighting

Anchor & Dock

Safety

Steering, Controls

Pumps

Fuel System

Seating & Pedestals

Trailering

Tops & Covers

Perform.

Propellers

Engine & Care

Cleaning & Care

Paint & Paint Acc.

Fun & Flotation

Topside Acc.

Cockpit & Deck

Hardware, Fasteners

Camouflage

Misc.

Comm.

Perko Fig. 566 Streamline Closed Base Cleats



- Chrome plated zinc alloy.

Order No.	Mfg. No.	Length	Base Dimensions	Max. Rope Size	List Price	
540890	(0566 DP2 CHR)	2"	2-3/16" x 1-1/8"	5/16"	\$14.49	FO-4101000
540903	(0566 DP3 CHR)	3"	3-1/8" x 1-1/2"	3/8"	\$19.79	FO-5831000
540915	(0566 DP4 CHR)	4-1/2"	4-7/16" x 1-7/8"	1/2"	\$31.49	FO-4022000

Marpac High Impact Nylon Cleats



- Durable high impact black nylon yacht cleats.

Order No.	Length	Head Screws	Package	List Price	
7-0340	4-1/2"	#10 Oval Machine	2 Per Card	\$3.79	GO-4520000
7-0340B	4-1/2"	#10 Oval Machine	Bulk, Sold Each	\$2.09	GO-0410000
7-0340S	4-1/2"	#10 Oval Machine	Bucket of 24 Cleats	\$29.89	GO-3002000
7-0341	6"	1/4" Oval Machine	2 Per Card	\$4.59	GO-8030000
7-0341S	6"	1/4" Oval Machine	Bucket of 24 Cleats	\$37.59	GO-9152000
7-0338	8"	1/4" Oval Machine	2 Per Card	\$6.89	GO-2640000
7-0338B	8"	1/4" Oval Machine	Bulk, Sold Each	\$2.59	GO-4710000
7-0339	10"	5/16" Oval Machine	2 Per Card	\$8.69	GO-2850000

Marpac Deluxe Pull Up Cleats



- Use only a drill or hole saw for installation.
- Closed position only 1/2" above deck.
- Water resistant O-ring included.
- Uses standard 3/8" studs.
- Wider finger grip for ease of use.
- Eliminates standing water on base.

Order No.	Description		List Price	
7-1017	Length 4"	Slim Line Design	\$84.09	GO-4365000
7-1018	Length 6"	Wide Base Design	\$84.59	GO-8665000

Attwood Neat Cleats



- Each stanchion is a 7/8" rod of solid enhanced #316 stainless steel alloy.
- Friction springs hold cleat up at any position.
- Cleats stay up when pulled.
- Drainage channels capture moisture.
- Two hole mounting pattern for easy installation.

Order No.	Mfg. No. / Description		List Price	
334000	(66515-7) Length 4-1/2"	Width 1-5/16"	\$92.59	FO-1846000
334005	(66517-7) Length 6"	Width 1-1/2"	\$95.19	FO-3666000

Accon Pull-Up Cleats



- Made of marine grade 316 stainless steel.
- Each cleat is supplied with a waterproofing cup.
- Each cleat is shipped with a backing plate that also serves as the cut-out template.
- Fasten with (4) screws (Not included).

Order No.	Mfg. No. / Description			
S/O	(205-12)	Length 12"	Through-Bolted	Call for Price
S/O	(205-12-S)	Length 12"	Stud Mount	Call for Price
S/O	(115-15)	Length 15"	Through-Bolted	Call for Price
S/O	(115-15-S)	Length 15"	Stud Mount	Call for Price

Perko Fig. 1316 Open Base Cleats



- Chrome plated zinc alloy with black polymer base.
- Stainless steel studs, nuts, and washers.

Order No.	Mfg. No.	Length	Stud Size	Max. Rope Size	List Price	
534291	(1316 001 CHR)	4-1/2"	12-24 x 1-1/2"	3/8"	\$18.89	FO-2231000
534301	(1316 002 CHR)	6"	1/4 x 1-1/2"	1/2"	\$28.29	FO-0891000

Panther "The Gripper" Rope Cleats



- A no tie, no knot, rope cleat, that will secure any rope or line up to 3/8" diameter.
- Secure just about any object up to 200 lbs with no knots.
- Length 3".
- 2 per pack.

Order No.	Mfg. No. / Description	List Price	
1941840	(558100) Black Nylon	\$8.09	HO-5840000
1948401	(558400) Die Cast Zinc Plated	\$11.99	FO-9380000

Attwood Flush Cleats - Countersunk



- Durable, enhanced cast 316 stainless steel construction.
- This cleat recesses flush to the deck for a clean, contemporary look.
- Mounting style: Countersunk.
- Water-resistant cleat recesses into cast body, and is captured with lubricated seals.
- Includes backing plate.
- Fasteners not included.

Order No.	Mfg. No. / Description		List Price	
230019	(66510-7) Length 4-1/2"	Width 2"	\$90.99	FO-9636000
230021	(66514-7) Length 6"	Width 2"	\$94.59	FO-1266000

NEW PRODUCT

WhiteCap Stainless Steel Folding Cleat



- 316 stainless steel.
- Overall length 4-9/16", cleat length 4-1/2", width 1-3/8".

Order No.	Mfg. No. / Description	List Price	
3806173	(6744C)	\$40.49	FO-4382000

Accon Slim-Line™ Pull-Up Cleats

Accon Marine



- Made of marine grade 316 stainless steel.
- Sleek, narrow design allows for installation where other flush-mounted cleats won't fit.
- Easy to pull up, the recess in the base allows the cleat to be grasped quickly and easily.
- Each cleat is shipped with a backing plate which also serves as the cut-out template.

Order No. Mfg. No. / Description

S/O	(304-4)	Length 4-1/2"	Call for Price
S/O	(304-6)	Length 6"	Call for Price
S/O	(304-8)	Length 8"	Call for Price
S/O	(304-10)	Length 10"	Call for Price
S/O	(304-10)	Waterproofing Cup for 304-4	Call for Price
S/O	(304-6C)	Waterproofing Cup for 304-6	Call for Price
S/O	(304-8C)	Waterproofing Cup for 304-8	Call for Price
S/O	(304-10C)	Waterproofing Cup for 304-10	Call for Price

Accon Wide-Line Cleats

Accon Marine



- Sleek, low profile appearance.
- Large flange helps cover rough cut-out area.
- Made of marine grade 316 stainless steel.
- Mounts from the bottom via welded stainless steel threaded studs.
- Each cleat is shipped with a 1/8" thick backing plate which also serves as the cut-out template.
- Drill four holes and saw-cut clearance between the two center holes.

Order No. Mfg. No. / Description

S/O	(305-4)	Length 4-1/2"	Call for Price
S/O	(305-6)	Length 6"	Call for Price
S/O	(305-8)	Length 8"	Call for Price
S/O	(305-10)	Length 10"	Call for Price
S/O	(305-4C)	Waterproofing Cup for 305-4	Call for Price
S/O	(305-6C)	Waterproofing Cup for 305-6	Call for Price
S/O	(305-8C)	Waterproofing Cup for 305-8	Call for Price
S/O	(305-10C)	Waterproofing Cup for 305-10	Call for Price

Accon Folding Cleats

Accon Marine



- Mounts on the surface of the boat.
- No cut-outs or hole saws required.
- These cleats lock down when not needed and spring up when release button is pushed in.
- Model 333 Cleat - Release slide is located on the top of the cleat.
- Model 332 Cleat - Release button is located on the side of the cleat.
- No drain receptacles required. They do not leak into the boat.
- Constructed of marine grade 316 cleat SS and brightly polished.

Order No. Mfg. No. / Description

S/O	(333-3.5)	Length 3-1/2"	Visible Screw Holes	Call for Price
S/O	(334-3.5)	Length 3-1/2"	No Visible Screw Holes	Call for Price
S/O	(333-4)	Length 4-1/2"	Visible Screw Holes	Call for Price
S/O	(334-4)	Length 4-1/2"	No Visible Screw Holes	Call for Price
S/O	(332-6)	Length 6"	Visible Screw Holes	Call for Price
S/O	(332-6-S)	Length 6"	No Visible Screw Holes	Call for Price
S/O	(332-8)	Length 8"	Visible Screw Holes	Call for Price
S/O	(332-8-S)	Length 8"	No Visible Screw Holes	Call for Price

Accon Flush-Mounted Pull-Up Cleats

Accon Marine



- Made of marine grade 316 stainless steel.
- Sealed base eliminates the need for a waterproofing cup, water can be drained through a fitting at the bottom of the unit.
- Can be converted to a lifting cleat by inserting a connecting rod in the base of the unit and attaching the rod to the bow eye.
- Each cleat is shipped with a backing plate that also serves as the cut-out template.
- Screws are not included.

Order No. Mfg. No. / Description

S/O	(209-4)	Length 4-1/2"	Call for Price
S/O	(209-4-CA)	Length 4-1/2" with Lifting Hardware	Call for Price
S/O	(209-4-LH)	Lifting Hardware for 4-1/2"	Call for Price
S/O	(209-6)	Length 6"	Call for Price
S/O	(209-6-CA)	Length 6" with Lifting Hardware	Call for Price
S/O	(209-6-LH)	Lifting Hardware for 6"	Call for Price
S/O	(209-8)	Length 8"	Call for Price
S/O	(209-8-CA)	Length 8" with Lifting Hardware	Call for Price
S/O	(209-8-LH)	Lifting Hardware for 8"	Call for Price
S/O	(209-10)	Length 10"	Call for Price
S/O	(209-10-CA)	Length 10" with Lifting Hardware	Call for Price
S/O	(209-10-LH)	Lifting Hardware for 10"	Call for Price
S/O	(209-10-S)	Length 10", Stud Mount	Call for Price
S/O	(209-10-S-CA)	Length 10" with Lifting Hardware, Stud Mount	Call for Price
S/O	(209-4-TMP)	Top-Mount Backing Plate for 209-4	Call for Price
S/O	(209-6-TMP)	Top-Mount Backing Plate for 209-6	Call for Price
S/O	(209-8-TMP)	Top-Mount Backing Plate for 209-8	Call for Price
S/O	(209-10-TMP)	Top-Mount Backing Plate for 209-10	Call for Price

Accon Pop-Up® Cleats

Accon Marine



- Made of marine grade 316 stainless steel.
- Cleat pops up at the touch of a button - simply push it back down when it is no longer needed and it locks in the flush position.
- In the up position, Pop-Up Cleats function exactly like conventional cleats.
- Each cleat is shipped with a backing plate which also serves as the cut-out template.
- Screws are not included.

Order No. Mfg. No. / Description

S/O	(202-4)	Length 4-1/2"	Call for Price
S/O	(202-6)	Length 6"	Call for Price
S/O	(202-6-S)	Length 6" Stud Mount	Call for Price
S/O	(202-8)	Length 8"	Call for Price
S/O	(202-8-S)	Length 8" Stud Mount	Call for Price
S/O	(202-10)	Length 10"	Call for Price
S/O	(202-4C)	Waterproofing Cup for 202-4	Call for Price
S/O	(202-6C)	Waterproofing Cup for 202-6	Call for Price
S/O	(202-8C)	Waterproofing Cup for 202-8	Call for Price
S/O	(202-10C)	Waterproofing Cup for 202-10	Call for Price
S/O	(202-4-TMP)	Top-Mount Backing Plate for 202-4	Call for Price
S/O	(202-6-TMP)	Top-Mount Backing Plate for 202-6	Call for Price
S/O	(202-8-TMP)	Top-Mount Backing Plate for 202-8	Call for Price
S/O	(202-10-TMP)	Top-Mount Backing Plate for 202-10	Call for Price
S/O	(600)	Brass Through Hull Fitting	Call for Price
S/O	(601)	Plastic Through Hull Fitting	Call for Price
S/O	(602)	Stainless Steel Through Hull Fitting	Call for Price

- Electronics
- Trolling Motors
- Instruments
- Electrical
- Lighting
- Anchor & Dock
- Safety
- Steering, Controls
- Pumps
- Fuel System
- Seating & Pedestals
- Trailering
- Tops & Covers
- Perform.
- Propellers
- Engine & Care
- Cleaning & Care
- Paint & Paint Acc.
- Fun & Flotation
- Topside Acc.
- Cockpit & Deck
- Hardware, Fasteners
- Camouflage
- Misc.
- Comm.

Accon Lifting Cleat

Accon Marine



- All stainless steel parts.
- Cleat and base are 316, lifting hardware is 304.
- Standard rod length is 12".
- The sling is a solid casting for increased strength.
- A cut-out template is supplied.
- Fastens to deck with four #10 screws (not included).
- The maximum working load is 4,000 lbs. in the direction of the axis of the threaded rod shank only.

Order No.	Mfg. No. / Description	Call for Price
S/O	(203-6-CA) Complete Lift Cleat Assembly	Call for Price

ACCESSORIES

Order No.	Mfg. No. / Description	Call for Price
S/O	(203-6-CB) Lift Cleat with Base	Call for Price
S/O	(209-6-R) Rod, 12"	Call for Price
S/O	(209-6-R-18) Rod, 18"	Call for Price
S/O	(209-6-R-24) Rod, 24"	Call for Price
S/O	(203-SPE) Sling (Casting)	Call for Price
S/O	(203-CBL) Cross Bar for Sling	Call for Price
S/O	(203-BE) Bow Eye	Call for Price

Accon Extra Large Round Lifting Eye

Accon Marine



- All stainless steel parts; eye and base are 316, lifting hardware is 304.
- The sling is a solid casting for increased strength.
- 3-1/4" diameter hole required.
- Fastens to deck with four 1/4" screws (Not included).

Order No.	Mfg. No. / Description	Call for Price
S/O	(203-EA-XL) Complete Lift Eye Assembly	Call for Price
S/O	(203-XL) Lift Eye with Base	Call for Price
S/O	(203-BE) Bow Eye	Call for Price

Accon Round Lifting Eye

Accon Marine



- All stainless steel parts; eye and base are 316, lifting hardware is 304.
- The sling is a solid casting for increased strength.
- 2-3/8" diameter hole required.
- Fastens to deck with four #10 screws (Not included).
- Standard rod length is 12".
- Parts may be purchased separately.
- The maximum working load is 4,000 lbs. in the direction of the axis of the threaded rod shank only. Test results available upon request.

Order No.	Mfg. No. / Description	Call for Price
S/O	(203-EA) Complete Lift Eye Assembly	Call for Price
S/O	(203-LE) Lift Eye with Base	Call for Price
S/O	(203-LER) 12" Rod	Call for Price
S/O	(203-S) Sling (Casting)	Call for Price
S/O	(203-CBR) Cross Bar for Sling	Call for Price
S/O	(203-BE) Bow Eye	Call for Price

Accon Lifting Eye Accessories

Accon Marine

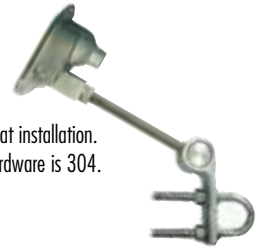
Pivot Attachment



Order No.	Mfg. No. / Description	Call for Price
S/O	(201-DP) Drain Plug	Call for Price
S/O	(201-DF) Drain Fitting	Call for Price
S/O	(209-PA) Pivot Attachment	Call for Price

Accon Oval Lifting Eye

Accon Marine



- Small compact unit. Unit can be drained or sealed water tight.
- Hub pivots two ways to overcome a slight misalignment at installation.
- All stainless steel parts; eye and base are 316, lifting hardware is 304.
- The sling is a solid casting for increased strength.
- Fastens to deck with four #10 screws (Not included).

Order No.	Mfg. No. / Description	Call for Price
S/O	(201-EA) Complete Lift Eye Assembly	Call for Price
S/O	(201-LE) Lift Eye with Base	Call for Price
S/O	(201-LER) 12" Rod	Call for Price
S/O	(203-S) Sling (Casting)	Call for Price
S/O	(203-CBL) Cross Bar for Sling	Call for Price
S/O	(203-BE) Bow Eye	Call for Price

Stainless Steel All Threaded Rods



Sample: Lifting Eye Assembly



Order No.	Description	List Price
731479	10-24	\$7.69
731481	1/4-20	\$4.99
731483	5/16-18	\$5.69
731485	3/8-16	\$9.59
731487	1/2-13	\$16.79
731489	5/8-11	\$31.29

Marpac Lifting Eye with Cleat

MARPAC



- Polished, type 316 cast stainless steel.
- Threaded for 5/8-11 rod.

Order No.	Description	List Price
7-0176	Lifting Eye with Cleat	\$39.89

Marpac Lifting Eye with O-ring

MARPAC



- Polished, type 316 cast stainless steel.
- Threaded for 5/8-11 rod.
- Eye inside diameter: 1-1/2".

Order No.	Description	List Price
7-0177	Lifting Eye	\$43.79

Marpac Adjustable Keel Plate

MARPAC



- Cast stainless steel.
- For use with 5/8" threaded rod and 1/2" bow eyes.
- Plate dimensions: 4-7/16" L x 1-3/4" W. Thickness 5/16".

Order No.	Description	List Price
7-0125	Adjustable Keel Plate	\$60.59

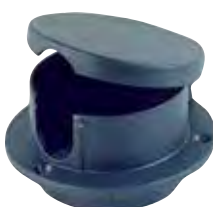
Perko Fig. 757 Rope Deck Pipe



- Chrome plated zinc alloy.
- Hinged, snap-down cover.
- Maximum rope size: 1".
- Flange OD 3-3/8".
- Uses #8 fasteners.

Order No.	Mfg. No. / Description	List Price	
542009	(0757 DPO CHR)	\$42.69	F0-8892000

Perko Fig. 1057 Rope Deck Pipe



- High impact black polymer.
- UV stabilized, fiber reinforced.
- Hinged, snap-down cover.
- Maximum rope size: 7/8".
- Flange OD 3-3/4".
- Uses #8 fasteners.

Order No.	Mfg. No. / Description	List Price	
531585	(1057 DPO BLK)	\$25.29	F0-0771000

Marpac Stainless Steel Rope Deck Pipe



- Cast stainless steel.
- Base dimensions: 5-5/8" x 4-1/16".

LIMITED QUANTITIES

Order No.	Description	List Price	
7-0941	Rope Deck Pipe	\$129.69	GO-9868000

Perko Fig. 752 Oval Hawse Hole Plate



- Chrome plated bronze.
- Spigot length 1-1/4".
- Outside dimensions: 4-1/4" x 6", inside dimensions: 2-1/8" x 4-1/8".
- Uses 1/4" fasteners.

Order No.	Mfg. No. / Description	List Price	
541967	(0752 000 CHR)	\$183.19	F0-3282100

Marpac Bow Chock



- Polished, type 316 cast stainless steel.
- Length 4-1/2".
- Sold per pair.

Order No.	Description	List Price	
7-0173	Bow Chock	\$35.39	GO-1732000

Marpac Straight Chock



- Stainless steel.
- Length 5".
- Sold per pair.

Order No.	Description	List Price	
7-0940	Straight Chock	\$36.99	GO-8742000

Accon Folding Chocks

Accon Marine



- Folds down when not in use.
- Marine grade 316 stainless steel.
- Surface mount - no cut-out required.

Order No.	Mfg. No. / Description	
S/O	(502-4) Length 4-1/2"	Call for Price
S/O	(502-6) Length 6"	Call for Price

Perko Fig. 1223 Skene Bow Chock



- Chrome plated zinc alloy.
- Maximum rope size: 1/2".
- Overall length 3-1/2", width 7/8".
- Uses #8 fasteners.

Order No.	Mfg. No. / Description	List Price	
533453	(1223 DPO CHR)	\$16.09	F0-6211000

Perko Fig. 1230 Straight Chock



- Chrome plated zinc alloy.
- Maximum rope size: 3/4".
- Length 4", width 7/8".
- Uses #8 fasteners.

Order No.	Mfg. No. / Description	List Price	
533605	(1230 DPO CHR)	\$34.19	F0-3932000

Accon Pop-Up® Chocks

Accon Marine



- Chock easily pulls up for use.
- Simply press it down when not needed to keep deck clutter free.
- Made of marine grade 316 stainless steel.
- Fastens to deck with two #10 screws (not included).

Order No.	Mfg. No. / Description	
S/O	(500) 4-1/2" Set of Port & Starboard Chocks	Call for Price
S/O	(500-6) 6" Set of Port & Starboard Chocks	Call for Price
S/O	(501) 4-1/2" Straight Stern Chock	Call for Price
S/O	(501-6) 6" Straight Stern Chock	Call for Price
S/O	(500-DF) Drain Fitting	Call for Price
S/O	(500-DP) Drain Plug	Call for Price

Perko Fig. 119 Straight Chocks

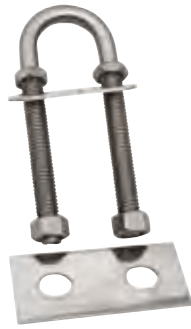


- Chrome plated bronze.

Order No.	Mfg. No.	Length	Width	Max. Rope Size	List Price	
533059	(0119 DP4 CHR)	4"	7/8"	3/4"	\$71.79	F0-5205000
533061	(0119 DP6 CHR)	6"	1-1/8"	1"	\$105.49	F0-4837000

- Electronics
- Trolling Motors
- Instruments
- Electrical
- Lighting
- Anchor & Dock
- Safety
- Steering, Controls
- Pumps
- Fuel System
- Seating & Pedestals
- Trailering
- Tops & Covers
- Perform.
- Propellers
- Engine & Care
- Cleaning & Care
- Paint & Paint Acc.
- Fun & Flotation
- Topside Acc.
- Cockpit & Deck**
- Hardware, Fasteners
- Camouflage
- Misc.
- Comm.

Marpac Stainless Steel Stern Eyes



- All stainless steel.
- Large backing plate helps distribute loads.
- Mounting nuts included.

Order No.	Description	List Price	
7-0124	Diameter 3/8", Shaft Length 3"	\$7.89	GO-9250000
7-0123	Diameter 1/2", Shaft Length 3-7/16"	\$12.79	GO-7580000

Marpac Stainless Steel Bow Eyes



- All stainless steel.
- Rounded plates won't gouge fiberglass.
- Mounting nuts included.

Order No.	Description	List Price	
7-0122	Diameter 3/8", Shaft Length 3"	\$7.39	GO-5940000
7-0120	Diameter 1/2", Shaft Length 3-7/16"	\$12.09	GO-0180000

EPCO Bow Eye



- 304 stainless steel for marine applications.
- Easy to install - all 4 nuts adjustable to conform to surfaces, and later on, to compressed walls, if needed.
- Overall length: 8".
- Center to center: 2".
- Thread length: 5-1/2". Thread diameter: 5/8".
- Face plates and nuts included.

Order No.	Mfg. No. / Description	List Price	
209232	(16-151-01000)	\$36.99	F0-9852000

Marpac Twin Shank Bow Eye



- Chrome plated zamak.
- For use on the bow or stern.
- Diameter: 3/8".
- Shaft length: 4-7/8".
- Washers and nuts included.

Order No.	Description	List Price	
7-54135	Twin Shank Bow Eye	\$16.19	F0-3311000

LIMITED QUANTITIES

Marpac Bow/Stern Eye



- Chrome plated zamak head.
- Galvanized shafts, nut and washer.
- Safe working load: 550 lbs.
- Eye hole: 7/8" ID.
- Shaft diameter: 3/8".
- Includes 3" and 5" shaft lengths.

Order No.	Description	List Price	
7-54134	Bow/Stern Eye	\$7.59	GO-9050000

Whitecap Bow Eye



- 304 stainless steel.
- Eye size: 1".
- Stock 3/8".
- Threads 2-1/2".
- Plate 3/4" x 2-1/4".

Order No.	Mfg. No. / Description	List Price	
2011630	(S-5020P)	\$32.99	H0-9791000

LIMITED QUANTITIES

- Electronics
- Trolling Motors
- Instruments
- Electrical
- Lighting
- Anchor & Dock
- Safety
- Steering, Controls
- Pumps
- Fuel System
- Seating & Pedestals
- Trailer
- Tops & Covers
- Perform.
- Propellers
- Engine & Care
- Cleaning & Care
- Paint & Paint Acc.
- Fun & Flotation
- Topside Acc.
- Cockpit & Deck
- Hardware, Fasteners
- Camouflage
- Misc.
- Comm.