

Catálogo de accesorios Náuticos



2025

El Navegante

www.repuestoselnavegante.com



JIF Marine Gunwale Hook Ladder



- Anodized aluminum.
- Folding vinyl covered hooks.
- 250 lb. weight capacity.
- Width 15".

2100115

Order No.	Mfg. No. / Description	List Price
2100115	(DMT3A-7) 3 Steps Hook Depth 7" Height 40"	\$125.39 F0-7778000
2100125	(DMT3A-11) 3 Steps Hook Depth 11" Height 40"	\$125.39 F0-7778000
2100120	(DMT4A-7) 4 Steps Hook Depth 7" Height 50"	\$132.99 F0-9039000
2187195	(DMT4A-11) 4 Steps Hook Depth 11" Height 50"	\$122.09 G1-6397000
2100130	(DMT5A-11) 5 Steps Hook Depth 11" Height 60"	\$172.09 F0-6402100

JIF Marine Telescoping Gunwale Hook Ladder



- Stainless steel 304 tubing.
- Non-slip contoured steps.
- All stainless standoffs with cushioned tips.
- 400 lb. weight capacity.
- Height 35", width 17".
- Between steps: 11-1/2".
- 3 Steps.

Order No.	Mfg. No. / Description	List Price
692093	(EPV3)	\$280.49 F0-4369100

JIF Marine Sport/Diver Ladders



- Stainless steel 316.
- Easy boarding for swimmers or divers with fins and gear.
- Dual 1-1/4" center post design, angled mount for stair-like usability.
- Comfortable non-skid step surface.
- Quick release mounting bracket included.
- 400 lb. weight capacity.
- Width 14".

Order No.	Mfg. No. / Description	List Price
2100090	(EES2) 2 Steps Black	\$319.19 F0-3432200
2100513	(EES3) 3 Steps Length 34" Black	\$239.99 F0-9976100
2100524	(EES4) 4 Steps Length 50" Black	\$273.99 F0-9719100
2100070	(EES3-W) 3 Steps Length 34" White	\$376.59 F0-1636200
2100075	(EES4-W) 4 Steps Length 50" White	\$363.69 F0-8545200

NEW MODELS

Marpac Gunwale Ladder - 4 Steps



- 15" non-slip composite steps for easy boarding.
- Corrosion resistant 1" diameter polished aluminum tubing.
- 10-1/2" hooks fit over most gunwales.
- Folds flat for easy storage.
- Adjustable standoffs with non-marking tips protect the hull.
- Maximum 250 lbs. weight limit.
- 4 Steps.

Order No.	Description	List Price
7-1634	Gunwale Ladder	\$67.99 G0-5554000

Marpac Stainless Steel Sport/Diver Ladders



- Stainless steel.
- Center post: 1-3/4" diameter.
- Comfortable non-skid step surface.
- Includes: (2) Storage clips and a quick release mounting bracket.
- Maximum 400 lbs. weight limit.
- Width 14".

Order No.	Description	List Price
7-1630	3-Step, Length 36"	\$186.99 G0-8252100
7-1631	4-Step, Length 48"	\$223.99 G0-7005100

QUICK RELEASE MOUNTING BRACKET

- Constructed of stainless steel with nylon spacer (1" to 5/8" thick).
- This mounting bracket allows quick and simple removal of our 7-1630 and 7-1631 Sport/Diver Ladders.
- Stainless steel pull pin securely locks ladder in place.
- Mounts with (4) fasteners (not included).
- Dimensions: 2-1/2" W x 3-3/4" H.

Order No.	Description	List Price
7-1632	Quick Release Mounting Bracket	\$22.79 G0-7251000

DIVER LADDER STORAGE CLIPS

- Black reinforced polypropylene.
- For 1-3/4" diameter posts.
- Base dimensions: 3-1/2" x 1-1/2".
- Includes: (2) Storage clips.

Order No.	Description	List Price
7-1633	Dive Ladder Storage Clips	\$6.79 F0-5740000



SPECIAL HANDLING MAY APPLY



- Electronics
- Trolling Motors
- Instruments
- Electrical
- Lighting
- Anchor & Dock
- Safety
- Steering, Controls
- Pumps
- Fuel System
- Seating & Pedestals
- Trailering
- Tops & Covers
- Perform.
- Propellers
- Engine & Care
- Cleaning & Care
- Paint & Paint Acc.
- Fun & Flotation
- Topside Acc.
- Cockpit & Deck
- Hardware, Fasteners
- Camouflage
- Misc.
- Comm.

JIF Marine Stainless Steel Sport/Diver Ladders - Heavy Duty



2187224

- Heavy duty construction with superior corrosion resistance.
- The ladder features a quick release mounting bracket for hassle-free installation and removal.
- Dual 1-1/4" center post design for enhanced stability.
- 400 lb. weight capacity.
- Mounting hardware not included.

Order No.	Mfg. No. / Description	Length	List Price	Part No.
2187223	(IBD3) 3 Steps	Length 34"	\$351.09	H0-5601200
2187224	(IBD4) 4 Steps	Length 42"	\$321.99	G1-9290200

Garelick Bass Boat Transom Ladder



- Oval steps with textured, painted surface.
- Black powder coat paint.
- Angled design for stair-like ease of boarding.
- Compact 2 step for low freeboard transoms.
- 2-1/4" diameter aluminum center vertical.
- Stainless steel quick release mounting bracket 391401 (99180) included.
- Rated to 400 lbs.
- Length 28", width 13".
- 2 Steps.

Order No.	Mfg. No. / Description	List Price	Part No.
391324	(19812)	\$310.49	E0-7823200

Garelick Swim Platform with Ladder



390980

391057

- For boats with outboard motors.
- Durable HDPE platform is pre-drilled for easy assembly.
- Mounts at 10° angle on transom.
- Flat poly treads for extra comfort.
- One 1" diameter stainless wraparound rail and one 1" diameter underside support rail (Reversible).
- 275 lb. weight capacity.

SWIM PLATFORM WITH LADDER

- Telescoping.
- Step count: 2.
- Overall dimensions: 18" W x 19" D.
- Height above platform: 11-1/2".
- Deployed length: 23-1/2".
- Stowed dimensions: L: 13-1/2", W: 11-1/4".

Order No.	Mfg. No. / Description	List Price	Part No.
391057	(19537)	\$328.29	E0-2264200

PLATFORM ONLY

- With 1 wrap around rail and 1 underside support rail.
- Dimensions: 18" W x 15" D x 3/4" T.

Order No.	Mfg. No. / Description	List Price	Part No.
390980	(19530)	\$197.39	E0-4084100

Garelick Sport Diver Ladder



- Oval steps with textured, painted surface.
- White powder coat paint.
- Angled design for stair-like ease of boarding.
- 2-1/4" diameter aluminum center vertical.
- Stainless steel quick release mounting bracket 391401 (99180) and ladder storage brackets (99193) included.
- Rated to 400 lbs.
- Length 38", width 13".
- 3 Steps.

Order No.	Mfg. No. / Description	List Price	Part No.
391297	(19803)	\$364.69	D0-5719200

Garelick EEz-In Sport/Diver Ladder Transom Mounting Bracket



- Included with all sport/diver series ladders.
- 1" thick poly spacer 10° angle with lock and stainless steel face plate.
- Mounting hole diameter: 5/16".

Order No.	Mfg. No. / Description	List Price	Part No.
391401	(99180)	\$75.69	F0-8925000

Garelick EEz-In Sport/Diver Ladder Transom Mounting Extension Shim



- Stainless steel.
- Extends ladder 3" farther from the transom.
- Used with face plate and 10° poly spacer included with ladder.
- Dimensions: 2.75" W x 3.62" H.

Order No.	Mfg. No. / Description	List Price	Part No.
391413	(99184)	\$98.59	F0-1096000

Garelick Swim Platform with Ladder



- For boats with I/O motors.
- Telescoping.
- Mounts at 10° angle on transom.
- Durable HDPE platform is pre-drilled for easy assembly.
- Stainless steel hardware.
- 1" diameter stainless steel.
- Ladder folds over platform for stowage.
- Flat poly treads for extra comfort.
- Two 1" diameter stainless wrap around rails.
- 275 lb. weight capacity.
- Step count: 2.
- Overall dimensions: 18" W x 19" D x 3/4" T.
- Height above platform: 11-1/2".
- Deployed length: 23-1/2".
- Stowed dimensions: L: 13-1/2", W: 11-1/4".

Order No.	Mfg. No. / Description	List Price	Part No.
391069	(19547)	\$341.19	E0-9855200

NEW PRODUCT

- Electronics
- Trolling Motors
- Instruments
- Electrical
- Lighting
- Anchor & Dock
- Safety
- Steering, Controls
- Pumps
- Fuel System
- Seating & Pedestals
- Trailering
- Tops & Covers
- Perform.
- Propellers
- Engine & Care
- Cleaning & Care
- Paint & Paint Acc.
- Fun & Flotation
- Misc.
- Comm.

Topside Acc.

- Cockpit & Deck
- Hardware, Fasteners
- Camouflage

NEW PRODUCT

NEW PRODUCT

Garelick Transom Platform with Telescoping Ladder



- For boats with I/O motors.
- Durable HDPE platform is pre-drilled for easy assembly.
- Mounts at 10° angle on transom.
- Two 1" diameter stainless wraparound rails.
- 275 lb. weight capacity.
- Overall dimensions: 18" W x 19" D x 3/4" T.
- Height above platform: 11-1/2".
- Deployed length: 23-1/2".
- Platform dimensions: 18" W x 15" D x 3/4" T.
- 2 Steps.

Order No. Mfg. No. / Description List Price
391045 (19546) **\$335.39** E0-4515200

Garelick Transom Platform with Telescoping Ladder



- For boats with outboard motors.
- Durable HDPE platform is pre-drilled for easy assembly.
- Mounts at 10° angle on transom.
- Ladder slides up and under platform for stowage.
- One 1" diameter stainless wraparound rail and one 1" diameter underside support rail (Reversible).
- 275 lb. weight capacity.
- Overall dimensions: 18" W x 19" D x 3/4" T.
- Height above and below platform: 11-1/2".
- Length: 13-1/2" (stowed), 23-1/2" (deployed), width 11-1/4".
- Platform dimensions: 18" W x 15" D x 3/4" T.
- 2 Steps.

Order No. Mfg. No. / Description List Price
391033 (19536) **\$322.49** E0-7814200

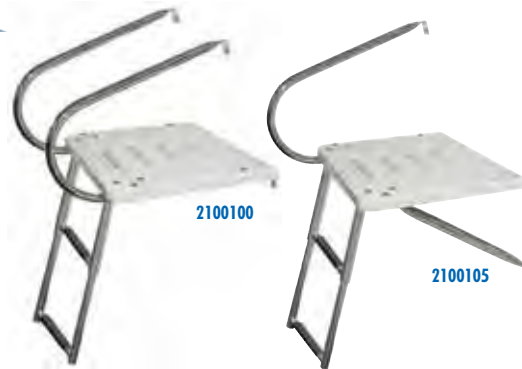
Jif Marine I/O Transom Plate



- Durable HDPE platform is pre-drilled for easy assembly.
- 1" diameter stainless steel 304 arms and underside support rails.
- No ladder.
- Platform width: 18", length: 15-1/2".

Order No. Mfg. No. / Description List Price
2187080 (EEQ2) **\$228.09** H0-5863100

Jif Marine Transom Platforms with Under Mount Ladder



- Durable HDPE platform is pre-drilled for easy assembly.
- 1" diameter stainless steel 304 arms and underside support rails.
- Flat treads for extra comfort.
- Stainless steel fasteners.
- Will require drilling.
- 300 lb. weight capacity.
- Length deployed 23", length stowed 13-1/2"
- 2 Steps. Platform width: 18", length: 15-1/2".

Order No. Mfg. No. / Description List Price
2100105 (EKU) O/B Transom Platform with One Arm **\$344.69** F0-8214200
2100100 (EKT2) I/O Transom Platform with Two Arms **\$359.99** F0-9915200

Jif Marine Transom Platforms with Over Mount Ladder



- Durable HDPE platform is pre-drilled for easy assembly.
- 1" diameter stainless steel 304 arms and underside support rails.
- Flat treads for extra comfort.
- Stainless steel fasteners.
- Will require drilling.
- 300 lb. weight capacity.
- Platform width: 18", length: 15-1/2".

1 STEP
 Order No. Mfg. No. / Description List Price
2100085 (EEQ) I/O Transom Platform with Two Arms **\$332.39** F0-7623200

2 STEPS
 • Length deployed 23", length stowed 13-1/2"
 Order No. Mfg. No. / Description List Price
2187120 (EKT) I/O Transom Platform with Two Arms **\$352.09** H0-5211200

Jif Marine Transom Platform with Over Mount Ladder



- Durable HDPE platform is pre-drilled for easy assembly.
- 1" diameter stainless steel 304 arms and underside support rails.
- Flat treads for extra comfort.
- Stainless steel fasteners.
- Will require drilling.
- 300 lb. weight capacity.
- Length deployed 23", length stowed 13-1/2".
- 2 Steps. Platform width: 18", length: 15-1/2".

Order No. Mfg. No. / Description List Price
2100110 (EKU1) O/B Transom Platform with One Arm **\$356.89** F0-2894200

- Electronics
- Trolling Motors
- Instruments
- Electrical
- Lighting
- Anchor & Dock
- Safety
- Steering, Controls
- Pumps
- Fuel System
- Seating & Pedestals
- Trailering
- Tops & Covers
- Perform.
- Propellers
- Engine & Care
- Cleaning & Care
- Paint & Paint Acc.
- Fun & Flotation
- Topside Acc.**
- Cockpit & Deck
- Hardware, Fasteners
- Camouflage
- Misc.
- Comm.

Jif Marine Over Platform Telescoping Drop Ladders



- Fold out and over, telescope down easily.
- Stainless steel steps, non-skid plastic tread.
- Electropolished stainless steel 304.
- 400 lb. weight capacity.
- Mounting hardware not included.

Order No.	Mfg. No.	Overall Height	Width	Gudgeon Length	List Price	
2187020	(DMX3) 3 Steps	34.5"	11.5"	5.83"	\$143.09	H0-5858000
692067	(DMX4) 4 Steps	45.5"	12"	6.5"	\$169.69	F0-8781100

Marpac Stainless Steel Telescoping Drop Ladders



- Stainless steel.
- Telescopes for compact storage and easy deployment.
- Non-skid plastic treads angled for safety and comfort.
- Includes easy-store bungee cord.
- Mount with four 1/4" bolts (not included).
- Maximum 400 lbs. weight limit.

11-3/4" W x 23-1/2" L (STOWED: 13-1/2" L), GUDGEON: 5-7/8" L

Order No.	Description	List Price	
7-1635	2-Step	\$93.69	G0-7726000

12" W x 35" L (STOWED: 15-5/16" L), GUDGEON: 7" L

Order No.	Description	List Price	
7-1636	3-Step	\$131.39	G0-3088000

12-1/2" W x 45-1/2" L (STOWED: 16-1/8" L), GUDGEON: 6-1/2" L

Order No.	Description	List Price	
7-1637	4-Step	\$168.19	G0-9621100

Garelick Over Platform Telescoping Ladder



- Steps - fold out and over, telescope down easily.
- Compact stowage - steps fold over flat on platform.
- Flat poly treads for increased comfort.
- Standard folding gudgeons.
- Bungee cord securing strap included.
- Nylon bushings between ladder sections prevent inadvertent deployment when flipping ladder into the water.
- Stainless steel - rated to 400 lbs.
- Overall height: 1-1/4", overall width: 11-1/2". Deployed length: 34-1/2", stowed length: 14-1/2". Gudgeons length: 7".
- 3 Steps.

Order No.	Mfg. No. / Description	List Price	
391108	(19616-61)	\$158.69	E0-2091100

Jif Marine Over Platform Telescoping Drop Ladder with Hand Grip



- Fold out and over, telescope down easily.
- Stainless steel steps, non-skid plastic tread.
- Electropolished stainless steel 304.
- 400 lb. weight capacity.
- Length 44", length stowed 18". Width 13".
- Mounting hardware not included.
- 4 Steps.

Order No.	Mfg. No. / Description	List Price	
2187141	(EQB4)	\$249.99	G0-9476100

Garelick Over Platform Telescoping Ladder



- Steps - fold out and over, telescope down easily.
- Compact stowage - steps fold over flat on platform.
- Flat poly treads for increased comfort.
- Standard folding gudgeons with convenient grab bar for easier boarding.
- Bungee cord securing strap included.
- Nylon bushings between ladder sections prevent inadvertent deployment when flipping ladder into the water.
- Stainless steel - rated to 400 lbs.

3 STEPS

- Overall height: 1-1/4", overall width: 11-1/2". Deployed length: 34-1/2", stowed length 14-1/2". Gudgeons length: 7".

Order No.	Mfg. No. / Description	List Price	
391122	(19676)	\$181.99	E0-9463100

4 STEPS

- Overall height: 1-1/2", overall width: 12". Deployed length: 45", stowed length 15-1/2". Gudgeons length: 8".

Order No.	Mfg. No. / Description	List Price	
391134	(19677)	\$260.69	E0-2559100

Garelick Over Platform Telescoping Ladder with Black Poly Steps



- Steps - fold out and over, telescope down easily.
- Compact stowage - steps fold over flat on platform.
- Comfortable black contour traction molded steps.
- Standard folding gudgeons.
- Securing strap included.
- Nylon bushings between ladder sections prevent inadvertent deployment when flipping ladder into the water.
- Stainless steel - rated to 275 lbs.

3 STEPS

- Overall height: 1-1/4", overall width: 14-1/2". Deployed length: 34-1/2", stowed length 14-1/2". Gudgeons length: 7".

Order No.	Mfg. No. / Description	List Price	
391160	(19656)	\$224.39	E0-9286100

4 STEPS

- Overall height: 1-1/2", overall width: 14-1/2". Deployed length: 45-1/2", stowed length 27-1/2". Gudgeons length: 7".

Order No.	Mfg. No. / Description	List Price	
391172	(19657)	\$279.89	E0-2990200

- Electronics
- Trolling Motors
- Instruments
- Electrical
- Lighting
- Anchor & Dock
- Safety
- Steering, Controls
- Pumps
- Fuel System
- Seating & Pedestals
- Trailering
- Tops & Covers
- Perform.
- Propellers
- Engine & Care
- Cleaning & Care
- Paint & Paint Acc.
- Fun & Flotation
- Topside Acc.
- Cockpit & Deck
- Hardware, Fasteners
- Camouflage
- Misc.
- Comm.

Garelick 6 Step Wide Body Over Platform Telescoping Ladder



- Wide body design and extra length - make it easier and more comfortable to use.
- Two extra steps into the water adds 24" length - overall length deployed over 5-1/2".
- For larger boat installations at transom platform.
- Compact stowage - steps fold over onto platform.
- Flat poly treads for increased comfort and traction.
- Heavy duty 6" folding gudgeons for easy mounting.
- Bungee cord securing strap included.
- Nylon bushings between ladder sections provide precision sliding.
- Full 2" diameter main body stainless steel - weight capacity to 400 lbs.
- Overall height: 2-1/4", overall width: 16".
- Deployed length: 68-1/2", stowed length: 18".
- Gudgeons length: 6".
- 6 Steps fold out and over, telescop down easily.

Order No.	Mfg. No. / Description	List Price	
391185	(19686)	\$401.29	D0-3012300

Garelick Under Platform Telescoping Ladder



- Steps telescope down easily.
- Ladder slides up, under platform for stowage.
- Flat poly treads for increased comfort.
- Includes: Mounting hardware and bungee cord securing strap.
- Self-locking angled support bracket.
- Stainless steel - rated to 400 lbs.
- Step count: 2.
- Overall height: 2-1/2", overall width 11-3/8".
- Deployed length: 23-1/4".
- Stowed length: 13-1/2".

Order No.	Mfg. No. / Description	List Price	
391095	(19622-61)	\$162.39	E0-9712100

NEW PRODUCT

Garelick Under Platform Sliding Ladder



- Designed for under platform use - stows easily and compactly.
- Ideal for installations under swim platforms or under the deck on bow or side on pontoon boats.
- Ladder stows compactly within its own length.
- Spring loaded self-locking for stowage.
- Flat poly treads for increased comfort.
- Mount holes: (3) 1/4" mount holes on each side, 6" spacing.
- Stainless steel - rated to 400 lbs.
- Overall height: 3", overall width: 11-1/2".
- Deployed length: 33-1/2", stowed length: 16".
- Support frame dimensions: 15.85" L x 13.88" W.
- 3 Steps.

Order No.	Mfg. No. / Description	List Price	
391158	(19643)	\$251.89	E0-2988100

JIF Marine Under Platform Ladders



- Electropolished stainless steel 304.
- Ladder slides up and underneath platform.
- Steps telescope down easily.
- Securing strap included.
- Self-locking angled support bracket.
- 400 lb. weight capacity.
- Width 11".
- Mounting hardware included.

Order No.	Mfg. No. / Description		List Price	
2187155	(EXF2) 2 Steps	Overall Height 20-1/2"	\$150.09	H0-5009000
2187156	(EXF3) 3 Steps	Overall Height 29"	\$181.99	H0-9190100

JIF Marine Under Platform Slide Out Ladder



- Electropolished stainless steel 304.
- Ideal for under swim platforms or under pontoon boat deck, side or bow.
- Steps telescope down easily.
- Flat poly treads for increased comfort.
- Securing strap included.
- 400 lb. weight capacity.
- Width 11-1/2".
- Mounting hardware not included.

Order No.	Mfg. No. / Description		List Price	
560030	(FOG3) 3 Steps	Overall Height 34-1/2"	\$206.19	F0-3344100

SPRING LOADED

Order No.	Mfg. No. / Description		List Price	
2187213	(FOGS-3) 3 Steps	Overall Height 34-1/2"	\$258.09	G1-6776100
2187214	(FOGS-4) 4 Steps	Overall Height 4-1/2"	\$303.99	H0-9328100

**SPECIAL HANDLING MAY APPLY**

- Electronics
- Trolling Motors
- Instruments
- Electrical
- Lighting
- Anchor & Dock
- Safety
- Steering, Controls
- Pumps
- Fuel System
- Seating & Pedestals
- Trailering
- Tops & Covers
- Perform.
- Propellers
- Engine & Care
- Cleaning & Care
- Paint & Paint Acc.
- Fun & Flotation
- Topside Acc.
- Cockpit & Deck
- Hardware, Fasteners
- Camouflage
- Misc.
- Comm.

JIF Marine Folding Transom Ladders



- Folds down for easy boarding.
- Fits most angled or curved transoms.
- Stainless steel fasteners and securing strap included.
- Durable 1" diameter anodized aluminum tube.
- Comfortable contour traction molded poly step.
- 250 lb. weight capacity.
- Mounting hardware not included.

Order No.	Mfg. No.	Height (Down)	Height (Up)	Width	List Price		
2187144	(ESG2)	2 Steps	18"	13"	17"	\$183.09	HO-5890100
2187145	(ESG3)	3 Steps	30"	23"	18"	\$212.99	HO-9772100

JIF Marine Transom Ladder



- Curved top hand rails for greater grab area.
- 2 step fold down extension into water.
- Fits most angled or curved transoms.
- Stainless steel fasteners and securing strap included.
- Durable 1" diameter anodized aluminum tube.
- Comfortable contour traction molded poly steps.
- 250 lb. weight capacity.
- Height (down) 41", height (up) 23". Width 16".
- Hook 5".
- Mounting hardware not included.
- 3 Steps.

Order No.	Mfg. No. / Description	List Price	
2187228	(ESH)	\$166.99	HO-9100100

LIMITED QUANTITIES

Garelick Telescoping Transom Ladder



- Designed to allow for boarding at transom - mounts directly on transom.
- 4 Steps allow for comfortable angled step up access under waterline.
- Folds down and telescopes into water.
- Self-locking brackets hold ladder secure against transom.
- Bungee cord securing strap included.
- Nylon bushings between ladder sections provide smooth deployment.
- Stainless steel - rated to 400 lbs.

3 STEPS						
Order No.	Mfg. No. / Description	List Price				
391209	(19683)	\$184.09	E0-7083100			

4 STEPS						
Order No.	Mfg. No. / Description	List Price				
391211	(19684)	\$220.09	E0-7056100			

JIF Marine Under-Deck Pontoon Ladders



- Convenient, under-deck stays out of the way.
- Mounts under deck, deploys easily.
- Safer boarding away from prop and motor.
- Anodized aluminum.
- 300 lb. weight capacity.
- Height 48", width 17", depth 5-1/2".
- Mounting hardware included.
- 4 Steps.

Order No.	Mfg. No. / Description	List Price	
2100053	(CSD1) Flat Front	\$420.19	F0-3149200
2100054	(CSD2) Round Front	\$419.99	F0-9939200

JIF Marine Aluminum Folding Pontoon Ladder



- Satin anodized aluminum.
- Folds up for easy storage.
- Quick release mounting brackets.
- 250 lb. weight capacity.
- Overall height: 40", width 14-1/2".
- Handle depth: 10".
- Step width: 12".
- Includes stainless steel assembly hardware.
- 4 Steps.

Order No.	Mfg. No. / Description	List Price	
2100022	(ASL)	\$185.09	F0-6592100

SPECIAL HANDLING MAY APPLY



- Electronics
- Trolling Motors
- Instruments
- Electrical
- Lighting
- Anchor & Dock
- Safety
- Steering, Controls
- Pumps
- Fuel System
- Seating & Pedestals
- Trailering
- Tops & Covers
- Perform.
- Propellers
- Engine & Care
- Cleaning & Care
- Paint & Paint Acc.
- Fun & Flotation
- Topside Acc.
- Cockpit & Deck
- Hardware, Fasteners
- Camouflage
- Misc.
- Comm.

JIF Marine Removable Folding Pontoon Ladders



- Installs instantly with plastic cup mounts.
- Constructed of heavy duty 1" tubing.
- Folds and locks for compact storage.
- 2-1/4" wide, injection molded, UV resistant plastic steps.
- 300 lb. weight capacity.
- Width 15-1/2".
- Hook depth: 6", hook height: 6".
- Step height: 10".
- Mounting hardware included.

Order No.	Mfg. No. / Description	Tubing Material	Height	List Price	
2100017	(ASC4) 4 Steps	Aluminum	44-1/2"	\$144.79	F0-5310100
2100018	(ASC5) 5 Steps	Aluminum	54-1/2"	\$161.29	F0-0921100
2100039	(ASC4SS) 4 Steps	Stainless Steel	44-1/2"	\$196.59	F0-1673100
2100019	(EFD) Mounting Cups, Sold Per Pair			\$11.99	F0-9380000
2100020	(ASC-LOCK) Locking Clip, Sold Each			\$4.39	F0-7030000

JIF Marine Aluminum Pontoon Swim Ladder



- Easily mounts to deck with included flush mount.
- Use at side gate or transom.
- Hooks and cushioned standoffs fold flat for compact storage.
- Durable 1" diameter anodized aluminum tube.
- Vinyl sleeve protects pontoon.
- Comfortable molded poly step.
- 300 lb. weight capacity.
- Height 36", width 15".
- Mounting hardware included.
- 4 Steps.

Order No.	Mfg. No. / Description	List Price	
692055	(DMM4)	\$241.39	F0-7986100

Garelick Removable Folding Pontoon Ladder



- Securing clip included.
- Sturdy design with over rail hooks for easy boarding.
- Lightweight anodized aluminum 1" diameter resists corrosion.
- Attaches easily to deck at side gate for temporary or permanent mounting with included.
- Comfortable contour black traction molded steps.
- Includes Shur-Loc stainless steel latch bolts and deck mounting hardware
- Shur-Loc ladder catches: Bracket mounts to deck for attaching latch type boarding ladders. Allows permanent or temporary mounting. Stamped stainless.
- Rated to 400 lbs.
- Step count: 4.
- Overall height: 42", overall width 16".
- Deployed length: 30". Stowed length: 29".

Order No.	Mfg. No. / Description	List Price	
391259	(12350-21)	\$218.59	E0-4936100

LIMITED QUANTITIES

JIF Marine Telescoping Pontoon Ladder



- Electropolished stainless steel 304.
- Steps telescope closed, hooks fold flat for compact storage.
- 1" diameter electroplated stainless steel tubing.
- Thick vinyl covered folding hooks.
- All stainless standoffs with cushioned tips.
- 400 lb. weight capacity.
- Height (down) 39", height (up) 32", width 16".
- Hook 10-1/4".
- Mounting hardware included.
- 4 Steps.

Order No.	Mfg. No. / Description	List Price	
2100016	(DUF4)	\$298.49	F0-4980200

FLUSH MOUNT SET

Order No.	Mfg. No. / Description	List Price	
2100061	(EHD)	\$15.19	F0-3601000

Garelick Stainless Steel Telescoping Pontoon Boarding Ladder



- Electropolished stainless steel tubing.
- Compact design allows ladder to be stowed in locker underneath pontoon furniture.
- Comfortable black contour traction molded steps.
- One-piece all aluminum adjustable standoffs with cushioned rubber tips.
- Attaches easily to deck for temporary or permanent mounting with included stainless steel Shur-Loc catches (76000).
- Rated to 400 lbs.
- Step count: 4.
- Overall width 16".
- Deployed length: 51". Stowed length: 32".

Order No.	Mfg. No. / Description	List Price	
1892001L	(12340-21)	\$323.99	D0-9195200

LIMITED QUANTITIES



SPECIAL HANDLING MAY APPLY



- Electronics
- Trolling Motors
- Instruments
- Electrical
- Lighting
- Anchor & Dock
- Safety
- Steering, Controls
- Pumps
- Fuel System
- Seating & Pedestals
- Trailering
- Tops & Covers
- Perform.
- Propellers
- Engine & Care
- Cleaning & Care
- Paint & Paint Acc.
- Fun & Flotation
- Topside Acc.
- Cockpit & Deck
- Hardware, Fasteners
- Camouflage
- Misc.
- Comm.

JIF Marine Folding Pontoon Ladder



- Installs instantly with EHD flush mounts.
- Folds down to 4 injection molded steps.
- Cushioned standoff.
- 1" anodized aluminum.
- Stainless steel 6" gudgeons.
- 300 lb. weight capacity.
- Overall height: 42", width 15".
- Mounting hardware included.
- 4 Steps.

Order No.	Mfg. No. / Description	List Price	
2100015	(DUG)	\$205.69	F0-8934100

JIF Marine Premium Rear-Entry Ladders



- 1-1/2" stainless steel 304 tubing.
- With extra wide steps.
- Rear entry
- Telescopes and flips up.
- Weight capacity: 400 lb.
- Mounting hardware not included.

Order No.	Mfg. No.	Overall Height	Depth	Width	List Price	
7000668	(GAT3)	3 Steps	46"	21"	\$452.29	F0-0661300
7000670	(GAT4)	4 Steps	58"	21"	\$546.89	F0-2828300

JIF Marine IBC Pontoon Ladder



- Stainless steel 316 tubing.
- Telescopes and flips up.
- Height (down) 57", width 12".
- Weight capacity: 400 lb.
- 4 Steps.

Order No.	Mfg. No. / Description	List Price	
2100080	(IBC)	\$399.69	F0-8797200

Garelick Removable Folding Pontoon Ladder



- Folds down to 4 steps; hooks fold and ladder stows in locker underneath furniture.
- Securing clip included.
- Sturdy design with over rail hooks for easy boarding.
- Lightweight anodized aluminum 1" diameter resists corrosion.
- Attaches easily to deck at side gate for temporary or permanent mounting with included.
- Comfortable contour black traction molded steps.
- Includes Shur-Loc stainless steel latch bolts and deck mounting hardware.
- Overall height: 42", overall width: 16".
- Deployed length: 30", stowed length 29".
- 4 Steps.

Order No.	Mfg. No. / Description	List Price	
391247	(12350)	\$294.89	E0-7112200

Garelick Premium Folding Pontoon Transom Boarding Ladder



- Permanent mount at transom, ideally at stern gate door.
- Comfortable black contour traction molded steps extra deep for added step surface.
- Folds down for easy boarding.
- Durable 1" diameter anodized aluminum tube.
- Includes securing clip and second step abuts end of pontoon log.
- Rated to 400 lbs.
- 2 - 4 Steps.
- Overall height: 46", overall width 16", folding length 14" + 32".
- Deck - 2nd step dimensions: 12", step surface dimensions: 5" x 12".

Order No.	Mfg. No. / Description	List Price	
391273	(12380)	\$340.09	D0-7027200

Garelick Dock or Pontoon Boarding Ladder



- 10° angled design provides effortless boarding.
- All aluminum heavy walled 1" diameter tube construction.
- Comfortable anodized aluminum traction tread 4" curved step surface.
- Dual handrails 15" height and extends 14" deep onto dock.
- Assembly is quick and easy with all stainless steel hardware.
- Capacity 300 lbs boarding weight
- Fold up hardware feature - easily removed for seasonal storage.
- 4 Steps.
- Height 48", width 18".

Order No.	Mfg. No. / Description	List Price	
391289	(15340)	\$373.89	D0-1199200

LIMITED QUANTITIES

SPECIAL HANDLING MAY APPLY

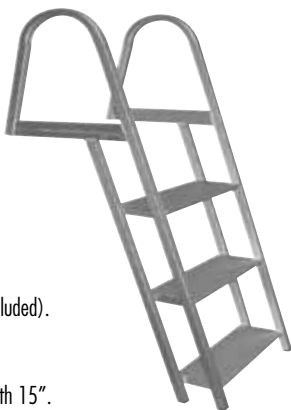


- Electronics
- Trolling Motors
- Instruments
- Electrical
- Lighting
- Anchor & Dock
- Safety
- Steering, Controls
- Pumps
- Fuel System
- Seating & Pedestals
- Trailer
- Tops & Covers
- Perform.
- Propellers
- Engine & Care
- Cleaning & Care
- Paint & Paint Acc.
- Fun & Flotation
- Topside Acc.**
- Cockpit & Deck
- Hardware, Fasteners
- Camouflage
- Misc.
- Comm.

JIF Marine Aluminum Dock Ladders



7-52422



- Durable, lightweight anodized aluminum.
- Large, angled steps for climbing comfort.
- Anti-skid tread for safety.
- Easily attaches to dock with J-hook hardware (included).
- Stainless steel assembly hardware.
- 300 lb. weight capacity.
- Step height 12", step depth 5-1/4", handle depth 15".
- Mounting hardware included.

Order No.	Mfg. No.	Overall Height	Width	List Price	
2104057	(ASE)	3 Steps	54"	15"	\$223.99 F0-9765100
2104102	(ASH)	4 Steps	61.75"	18"	\$307.99 F0-9551200
2104113	(ASH-2)	5 Steps	73.75"	18"	\$313.99 F0-9791200
2187027	(ASH-7)	5 Steps	97.75"	18"	\$456.09 H0-5637200
7-52422	(EKA)	Ladder Attachment Kit		\$6.89	F0-2840000

JIF Marine Dock Lift Ladders



- Anodized aluminum.
- Retractable ladder slides up above waterline.
- Double ring locking mechanism for stability.
- 750 lb. weight capacity.
- Width 20", handle depth 14".
- Step width 2" step height 12".

Order No.	Mfg. No. / Description	List Price	
2187004	(DJX4) 4 Steps	\$466.09	G1-6920300
2187005	(DJX5) 5 Steps	\$507.09	G1-1692300

JIF Marine Stationary Dock Ladder



- Anodized aluminum.
- Great for seawalls and stationary docks.
- 750 lb. weight capacity.
- Width 20".
- Handle depth 14", step height 12".
- 3 Steps.

Order No.	Mfg. No. / Description	List Price	
2104257	(DJV3-W)	\$427.99	F0-9599200

NEW PRODUCT

JIF Marine Dock Lift Ladders



- Anodized aluminum.
- Perfect for floating docks.
- Fixed portion extends 15" down from top of dock.
- Double rung locking mechanism is extra sturdy.
- 750 lb. weight capacity.
- Width 21", handle depth 8".
- Step width 2" step height 12".

Order No.	Mfg. No. / Description	List Price	
2187006	(EFL3) 3 Steps	\$527.09	H0-5261300
2187008	(EFL5) 5 Steps	\$587.99	H0-9725300

LIMITED QUANTITIES

Patriot Steel Standard Dock Ladders



- High quality marine grade aluminum mill finish.
- Fabricated using TIG welding.
- Safely designed to hold capacity surpassing 665 lb. per rung.
- Extra traction 2" grooved ladder rung.
- Distance from bottom of pier to 1st step 12", each step thereafter measures in increments of 12".
- Total width of ladder: 18-5/8".
- Tubular handle measures 24" high from mounting surface and 14-3/4" deep.

Order No.	Description	List Price	
723246	5 Step Non-UPSable	\$216.99	E0-4726100
723252	3 Step Wide Step 3.5" Non-UPSable	\$222.29	E0-2766100
723254	4 Step Wide Step 3.5" Non-UPSable	\$236.49	E0-7377100

LIMITED QUANTITIES

SPECIAL HANDLING MAY APPLY



- Electronics
- Trolling Motors
- Instruments
- Electrical
- Lighting
- Anchor & Dock
- Safety
- Steering, Controls
- Pumps
- Fuel System
- Seating & Pedestals
- Trailering
- Top & Covers
- Perform.
- Propellers
- Engine & Care
- Cleaning & Care
- Paint & Paint Acc.
- Fun & Flotation
- Topside Acc.
- Cockpit & Deck
- Hardware, Fasteners
- Camouflage
- Misc.
- Comm.

JIF Marine 2 Step Emergency Reboarding Ladder



- Anodized aluminum.
- Strong all-aluminum design.
- Easily rotates and drops down into position.
- Snaps up securely into slot when not in use.
- Non-slip material on both steps.
- 400 lb. weight capacity.
- Height (deployed) 18", height (up) 10", width 5".
- Mounting hardware not included.

Order No. Mfg. No. / Description List Price
6400136 (EOM-2) **\$297.79** F0-5480200

R & R Design E-Ladder



- E-Ladders or Emergency Exit Ladders can be mounted directly to a jack plate, an engine bracket, directly to engine mount.

Order No. Mfg. No. / Description List Price
2003675 (RR-SREL) **\$330.39** D0-1346200

Sea Dog Folding Ladder



- Made of molded-in, high-visibility orange polycarbonate with nylon rope supporting the frame.
- They secure quickly to cleats, railings, stanchions and halyards and will support up to 300 pounds.
- 5 Steps.
- Width 11-3/4".

Order No. Mfg. No. / Description List Price
322522 (582501-1) **\$74.99** G0-4205000

Hardline EZ Riser Boarding Ladder™



- Quick and easy personal watercraft or boat boarding rung ladder.
- Flexible nylon rope ladder.
- Length 55".
- Rungs (steps) are adjustable for depth in the water.
- Rungs (steps) are 10" wide.
- Soft neoprene rungs (steps).
- Adjustable - fits any pwc or jet boat.
- UV treated marine rope.
- 300 lb. weight capacity.

Order No. Mfg. No. / Description List Price
2034503 (EZ-1) **\$30.19** G1-2691000

Beast Outdoor Side Kick Steps



- Fits on most boat trailers.
- There are three steps welded onto tubed steel and are topped with EVA foam step pads.
- The top handle is built so there is always available hand contact on the way up.
- Our two piece design allows you to easily ship the steps in two pieces.

Order No. Mfg. No. / Description List Price
500601 (Rail) **\$532.09** F0-6427300

JIF Marine Ladder Attachment Kit



- Stainless steel
- Contains: (2) Footman loops, (4) 3/16" x 1-3/4" Flat Head Phillips stainless steel bolts, (4) Stainless steel washers and (4) Lock nuts.

Order No. Mfg. No. / Description List Price
2187119 (EKA) **\$17.09** H0-5201000

Quality Mark Bow Step



- Heavy duty folding adjustable boarding ladder.
- Makes boarding and loading of gear onto any boat safer, easier and convenient.
- The big, sturdy handle enhances safety.
- Heavy duty ladder folds up and away when not in use.
- Infinite angle adjustments to fit your boat/trailer configuration.
- Simple to install; all hardware included.
- 14" wide, non-skid steps.
- Rated for 300 lbs. capacity.

Order No. Mfg. No. / Description List Price
2921970 (28801) 3 Step Starboard with Right Handle **\$450.09** F0-6051300
2921972 (28803) 4 Step Starboard with Right Handle **\$550.09** F0-6058300
2921971 (28802) 4 Step Port with Left Handle **\$550.09** F0-6058300

- Electronics
- Trolling Motors
- Instruments
- Electrical
- Lighting
- Anchor & Dock
- Safety
- Steering, Controls
- Pumps
- Fuel System
- Seating & Pedestals
- Trailering
- Tops & Covers
- Perform.
- Propellers
- Engine & Care
- Cleaning & Care
- Paint & Paint Acc.
- Fun & Flotation
- Topside Acc.
- Cockpit & Deck
- Hardware, Fasteners
- Camouflage
- Misc.
- Comm.

O & H Manufacturing Duckbill Push Pole (1-Piece)



- Not UPS-able.

Order No.	Mfg. No. / Description	List Price	
342078	(DBPP-10) 1-1/4" x 10'	\$207.98	H0-9742100
342066	(DB100) Duck Bill Attachment (UPS-able)	\$42.98	H0-9752000

Marpac Telescopic Boat Hook



- Perfect for docking, launching, mooring or retrieving.
- Easy to set up, it requires only a simple twist of the telescoping tubes to lock in position.
- Hook will not mar boat's finish.
- Guaranteed unbreakable hook made of noncorrosive Lexan.
- Adjustable from 48" to 84".

Order No.	Description	List Price	
7-0602	Telescoping Boat Hook	\$19.89	F0-2931000

Marpac 3-Piece Telescopic Boat Hook



- Anodized aluminum for corrosion resistance.
- Telescoping handle has a positive CamLock for more secure use and easy stowing.
- Screw-on boat hook attachment can be simply remove so the pole can be used for other purposes - brush, mop, etc.
- 3-sections to extend the pole.
- Adjustable from 42" to 96".

Order No.	Description	List Price	
7-56114	3-Piece Telescopic Boat Hook	\$26.99	F0-9881000

Garelick Fixed Length Boat Hooks



- Head type: Marine composite.
- Secions: 1.
- Diameter 1".

Order No.	Mfg. No. / Description	List Price	
323307	(55006) Fixed Length: 6'	\$40.69	F0-8482000
323319	(55008) Fixed Length: 8'	\$52.99	F0-9073000

Garelick Telescoping Boat Hook



- Head type: Marine composite.
- Secions: 2.
- Diameter 1" and 1-1/8".

Order No.	Mfg. No. / Description	List Price	
323345	(55190) Adjusts 4' to 7.5'	\$41.89	F0-2392000

NEW PRODUCT

Garelick Heavy Duty Telescoping Boat Hooks



- Head type: Marine composite.
- Secions: 3.
- Diameter 1", 1-1/8" and 1-1/4".

Order No.	Mfg. No. / Description	List Price	
323357	(55170) Adjusts 3-1/2' to 8'	\$49.69	F0-8743000
323369	(55175) Adjusts 4-1/2' to 12'	\$64.09	F0-6844000

Star Brite Extending Economy Boat Hook



- Telescoping pole extends with a special fast locking cam action.
- Made of unbreakable, glass reinforced nylon.
- Special air chambers make it float.
- Length 4' - 8'.

Order No.	Mfg. No. / Description	List Price	
675966	(40609)	\$31.19	F0-3812000

Garelick Boat Hook with Stainless Steel Head



- Head type: Stainless steel.
- Secions: 1.
- Diameter 1" and 1-1/8".

Order No.	Mfg. No. / Description	List Price	
1894280	(55206) Fixed Length: 6'	\$74.89	D0-1995000

LIMITED QUANTITIES

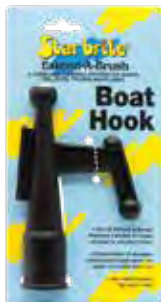


SPECIAL HANDLING MAY APPLY



- Electronics
- Trolling Motors
- Instruments
- Electrical
- Lighting
- Anchor & Dock
- Safety
- Steering, Controls
- Pumps
- Fuel System
- Seating & Pedestals
- Trailer
- Tops & Covers
- Perform.
- Propellers
- Engine & Care
- Cleaning & Care
- Paint & Paint Acc.
- Fun & Flotation
- Topside Acc.**
- Cockpit & Deck
- Hardware, Fasteners
- Camouflage
- Misc.
- Comm.

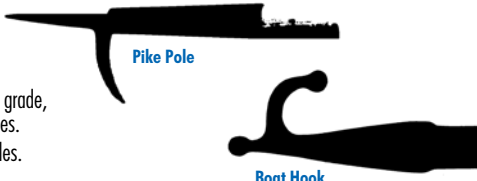
Star Brite Boat Hook



- Fits all Extend-A-Brush Premium Handles.
- Constructed of glass-reinforced nylon for years of trouble-free use.
- Special design makes for easy rope handling and pick up.

Order No.	Mfg. No. / Description	List Price
629859	(40033)	\$15.19 F0-3601000

Heavy Duty Boat Hooks and Pike Poles



Pike Pole

Boat Hook

- Heavy duty, commercial grade, boat hooks and pike poles.
- 1-1/2" aluminum handles.
- Not UPS-able.

Order No.	Mfg. No. / Description	List Price
327711	Aluminum Pike Pole Length 14'	\$156.19 F0-3390100
327736	Aluminum Pike Pole Length 18'	\$183.79 F0-5682100
327747	Aluminum Pike Pole Length 20'	\$211.99 F0-9384100
341001	Aluminum Boat Hook Length 8'	\$120.79 F0-5548000
341003	Aluminum Boat Hook Length 12'	\$143.89 F0-2700100
341004	Aluminum Boat Hook Length 16'	\$177.19 F0-3042100

Swobbit Perfect Poles™ - Telescoping Poles



- Teardrop design makes Perfect Pole up to 67% stronger than other telescoping handles.
- Comfortable hand grip.
- Outer pole is made of custom extruded, heat treated, anodized aluminum.
- Inner pole is made of drawn 6063 T8 heat treated, anodized aluminum.
- Patented no-lock tracking system for foolproof adjustments.
- It's also perfect for use with our Gaff Hook and Net to land that big catch.

Order No.	Mfg. No. / Description	List Price
460208	(SW45640) Length 2' - 4'	\$32.39 F0-7622000
460206	(SW45650) Length 3' - 6'	\$45.19 F0-3613000
460193	(SW45660) Length 5' - 9'	\$59.79 F0-5814000
460181	(SW45670) Length 6' - 11'	\$77.99 F0-9545000

Marpac Boat Hook Holders



- Polished stainless steel.
- Holds boat hooks up to 1-1/4" OD.
- Uses #6 fasteners.
- Sold per pair.

Order No.	Description	List Price
7-0098	Boat Hook Holders	\$6.89 G0-2640000

Garelick Replacement Boat Hook Head



- Wide gap to grab large objects or cleats - push or pull.
- 3/4" acme threaded head (under red cap) for screw on brush, broom, or mop.
- Non-corrosive UV resistant marine composite.

LIMITED QUANTITIES

Order No.	Mfg. No. / Description	List Price
1893131	(99046)	\$19.69 F0-8731000

Swobbit Perfect Pole™ Attachments



- Uni-Snap quick release adapter snaps onto the Perfect Pole Telescoping Handle.

UNIVERSAL BOAT HOOK

- A multi-purpose tool for boaters, aiding in dock line retrieval, recovering overboard items and as a push pole for safer docking.
- Made of strong UV resistant polycarbonate.
- Length 9-1/4", width 4".

Order No.	Mfg. No. / Description	List Price
460333	(SW66650)	\$13.39 F0-7390000

STAINLESS STEEL GAFF HOOK

- Machined stainless steel base and gaff hook provide the strength you need for your light duty fishing.
- Length 8".

Order No.	Mfg. No. / Description	List Price
460335	(SW66670)	\$39.29 F0-0572000

LANDING NET - PEAR SHAPE

- Perfect for retrieving overboard items or landing fish.
- Large, light to medium weight, not intended for landing heavy fish or objects.
- Dimensions: 17" x 27" x 30"

Order No.	Mfg. No. / Description	List Price
460337	(SW66680)	\$30.59 F0-1412000

Perko Fig. 492 Boat Hook Holders



- Stainless steel.
- Dimensions: 3-1/2" L x 1" W.
- Maximum pole OD 1-1/2".
- Uses #6 fasteners.
- Sold per pair.

Order No.	Mfg. No. / Description	List Price
538922	(0492 DPO STS)	\$14.29 F0-0001000

SPECIAL HANDLING MAY APPLY



- Electronics
- Trolling Motors
- Instruments
- Electrical
- Lighting
- Anchor & Dock
- Safety
- Steering, Controls
- Pumps
- Fuel System
- Seating & Pedestals
- Trailering
- Tops & Covers
- Perform.
- Propellers
- Engine & Care
- Cleaning & Care
- Paint & Paint Acc.
- Fun & Flotation
- Topside Acc.
- Cockpit & Deck
- Hardware, Fasteners
- Camouflage
- Misc.
- Comm.

Taylor Made Nylon International Code of Signals Flags



- Set includes: Complete alphabet, Numbers 0-9, repeaters & answering pennant and handy storage pouch with separate compartments.
- Dimensions: 12" x 18".

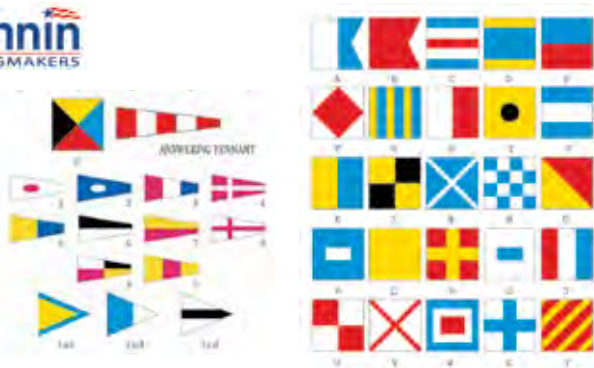
SIGNAL FLAGS SET - TOTAL OF 36 FLAGS

Order No.	Mfg. No. / Description	List Price	
224802	(93245)	\$91.89	F0-2346000

FUEL SIGNAL FLAG (B)

Order No.	Mfg. No. / Description	List Price	
224751	(93257)	\$5.09	F0-6530000

Annin International Code of Signals



- Made of 100% heavy weight nylon.
- Set of 40 flags with double-stitched seams.
- Finished nylon rope, distance lines and ash toggles.
- Includes: (26) 12" x 15" alphabet flags, (11) 8" x 24" pennants and (3) 8" x 16" substitutes.
- Comes in a handy nylon storage bag.

Order No.	Mfg. No. / Description	List Price	
471390	(256000)	\$913.09	H0-5874500
224656	(256101-B) Fuel Flag, 24" x 24"	\$103.09	H0-5816000

Taylor Made Deluxe Sewn Flags



- These deluxe sewn flags are constructed from lightweight yet durable fade resistant nylon fabric, which make them the perfect all-weather flags.
- Sold each per poly bag.

Order No.	Mfg. No.	Design	Dimensions	List Price	
225272	(8118)	U.S. Yacht Ensign	12" x 18"	\$23.59	F0-1561000
225284	(8124)	U.S. Yacht Ensign	16" x 24"	\$30.89	F0-2612000
M749-3550	(8130)	U.S. Yacht Ensign	20" x 30"	\$36.19	F0-3352000
225347	(8418)	United States	12" x 18"	\$27.59	F0-1391000
225359	(8424)	United States	16" x 24"	\$32.69	F0-8822000
225361	(8430)	United States	20" x 30"	\$36.69	F0-8652000
225373	(8436)	United States	24" x 36"	\$46.49	F0-4523000
225380	(8448)	United States	30" x 48"	\$58.69	F0-8014000
225385	(8460)	United States	36" x 60"	\$66.69	G0-8644000
225400	(8472)	United States	48" x 72"	\$78.49	F0-4945000
M749-3640	(8236)	U.S. Power Squadron Ensign	24" x 36"	\$31.99	F0-9322000

Taylor Made Nylon Novelty Flags



- Flags measure 12" x 18" with brass grommets.
- 200 denier, 2 sided screen printed nylon with your favorite graphic.
- Sold each per poly bag.

Order No.	Mfg. No.	Design	List Price	
224600	(9118)	Cocktail	\$14.19	F0-3990000
224612	(9218)	Beer	\$14.19	F0-3990000
224624	(1818)	Jolly Roger	\$14.19	F0-3990000
224701	(32185)	Solid Yellow	\$13.59	F0-1590000

Nylon State, International and Courtesy Flags



- Perma-print dyed nylon with reinforced nylon heading.
- Includes brass grommets.
- Sold each per poly bag.

Order No.	Mfg. No.	Design	Dimensions	List Price	
224472	(93089)	Alabama State	12" x 18"	\$20.09	F0-6041000
224460	(93091)	Arkansas State	12" x 18"	\$20.09	F0-6041000
224484	(93096)	Florida State	12" x 18"	\$20.09	F0-6041000
224662	(142150)	Louisiana State	24" x 36"	\$50.59	H0-5303000
224508	(93104)	Louisiana State	12" x 18"	\$20.09	F0-6041000
224509	(142148WE)	Louisiana State	12" x 18"	\$26.39	H0-3851000
224496	(93110)	Mississippi State	12" x 18"	\$20.09	F0-6041000
224511	(93128)	Tennessee State	12" x 18"	\$20.09	F0-6041000
224523	(2318)	Texas State	12" x 18"	\$20.09	F0-6041000
224525	(2018)	Bahamas Courtesy	12" x 18"	\$21.99	F0-9351000

Taylor Made United States Flag - Nylon Ensign



- Perma-print dyed nylon with reinforced nylon heading.
- Dimensions: 12" x 18".

Order No.	Mfg. No. / Description	List Price	
225386	(2418)	\$16.89	F0-2811000

- Electronics
- Trolling Motors
- Instruments
- Electrical
- Lighting
- Anchor & Dock
- Safety
- Steering, Controls
- Pumps
- Fuel System
- Seating & Pedestals
- Trailering
- Tops & Covers
- Perform.
- Propellers
- Engine & Care
- Cleaning & Care
- Paint & Paint Acc.
- Fun & Flotation
- Topside Acc.
- Cockpit & Deck
- Hardware, Fasteners
- Camouflage
- Misc.
- Comm.

Marpac Telescopic Flag Pole



- Adjusts from 26" - 48" to fit any flag size.
- Extendable flag pole fits in existing stern light socket.
- Compatible with most major light pole sockets.

Order No.	Description	List Price	
7-58007	Telescopic Flag Pole	\$36.19	GO-5242000

Taylor Made Stainless Steel Top Mount Flag Pole Sockets



- Made from beautiful long lasting T316 polished stainless steel.
- 10° angle.

Order No.	Mfg. No. / Description	List Price	
720703	(965) Fits 1" Poles	\$40.99	FO-9682000
720715	(966) Fits 1-1/4" Poles	\$43.69	FO-8503000

Taylor Made Rail Mount Pulpit Staff



- Mounts to 7/8" to 1-1/4" rails.
- Complete with split rings.
- T304 stainless steel.
- Rounds rails only.

Order No.	Mfg. No. / Description	List Price	
720804	(971)	\$27.39	FO-7191000

Taylor Made KW-Series™ Flagpole Mount



- Can be used with a 3/4", 1" and 1-1/4" O.D. flagpole.
- Can be used when pulling a skier or tuber.
- Flag and flagpole not included.
- Can be used as a fishing rod holder, for spotlights.
- Comes with two drain holes.
- Mounting hardware included.

Order No.	Mfg. No. / Description	List Price	
3450943	(943)	\$109.99	FO-9967000

Taylor Made Charlevoix® Bargee and Antenna Clips



- Securely fly your flag from your antenna.
- Included neoprene for use with poles on antenna smaller than 1/2".

Order No.	Mfg. No. / Description	List Price	
720487	(57925)	\$11.09	FO-6770000

Taylor Made Teak Flag Poles



- Made from the finest grade A, kiln-dried teakwood.
- Never worry about insects or wood rot again.
- No deteriorating or warping.

Order No.	Mfg. No. / Description		List Price	
720614	(60750) Length 24"	Diameter 1"	\$26.29	FO-0481000
720626	(60752) Length 30"	Diameter 1"	\$34.59	FO-1242000
720638	(60754) Length 36"	Diameter 1-1/4"	\$44.89	FO-2413000
720640	(60756) Length 48"	Diameter 1-1/4"	\$61.29	FO-0924000

Taylor Made Stainless Steel Rail Mount Flag Pole Socket



- Designed to securely fasten to 7/8" to 1" rails.
- Perpendicular to the rail and are made for 1" diameter flag poles.

Order No.	Mfg. No. / Description	List Price	
3456709	(973)	\$80.29	HO-7184000

Taylor Made Pontoon Flag Pole Socket with Flag



- Developed with the pontoon boater in mind, this new injection molded, black nylon mount attaches easily to the top of your pontoon railing and features a 10° presentation angle.
- The 3/4" diameter bright dipped anodized aluminum pole simply snaps into the base and features color matched Charlevoix Flag Clips.

Order No.	Mfg. No. / Description	List Price	
720854	(921) Flag Dimensions: 12" x 18"	\$75.19	FO-3625000

Taylor Made Flag Pole with Charlevoix® Flag Clips



- Clips are designed to clamp tight or spin around the pole.
- Bottom clip and O-ring can be moved to accommodate any size flag.
- Marine grade 3/4" diameter anodized aluminum with nylon flag clips.
- Screws not included.

Order No.	Mfg. No. / Description	List Price	
224610	(915) 18" Flag Staff	\$38.89	FO-2272000
720525	(917) 30" Flag Staff	\$43.99	FO-9703000

Taylor Made Charlevoix® Flag Clips



- Single-piece nylon construction.
- Secures in place and easily adjusts to pole.
- Includes two clips.

Order No.	Mfg. No. / Description	List Price	
720489	(57926) Fits Flag Poles: 3/4"	\$11.09	FO-6770000
720491	(57928) Fits Flag Poles: 7/8" to 1"	\$11.09	FO-6770000

- Electronics
- Trolling Motors
- Instruments
- Electrical
- Lighting
- Anchor & Dock
- Safety
- Steering, Controls
- Pumps
- Fuel System
- Seating & Pedestals
- Trailering
- Tops & Covers
- Perform.
- Propellers
- Engine & Care
- Cleaning & Care
- Paint & Paint Acc.
- Fun & Flotation
- Topside Acc.
- Cockpit & Deck
- Hardware, Fasteners
- Camouflage
- Misc.
- Comm.

Kuuma Stainless Steel Grills

Kuuma Elite 316 Marine Gas Grill with Regulator



Equivalent to Magma A10-1218L

- High quality, lightweight 304 stainless steel.
- Grilling power: 14,000 BTU/HR.
- Features: Removable warming rack, regulator control knob, mountable, stay cool handle, built-in thermometer, push button igniter, latching lid, removable lift-and-clean liner, folding legs, removeable grease tray.
- Cooking surface area: 316 square inches.
- 1"-20 Throwaway cylinder threads.
- Designed for high pressure propane - disposable or larger refillable tanks.
- Dimensions: 21-1/4" L x 12-11/16" D x 13" H.

Order No. Mfg. No. / Description List Price
689022 (58173) **\$477.29** F0-0143300

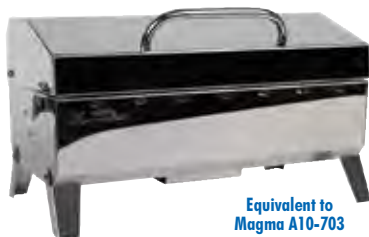
Kuuma Elite 216 Marine Gas Grill with Regulator



- High quality, lightweight 304 stainless steel.
- Grilling power: 13,000 BTU/HR.
- Features: Removable warming rack, regulator control knob, mountable, stay cool handle, built-in thermometer, push button igniter, latching lid, removable lift-and-clean liner, folding legs, removeable grease tray.
- Cooking surface area: 216 square inches.
- 1"-20 Throwaway cylinder threads.
- Designed for high pressure propane - disposable or larger refillable tanks.
- Dimensions: 16-1/8" L x 12-11/16" D x 13" H.

Order No. Mfg. No. / Description List Price
689021 (58155) **\$385.19** F0-3696200

Kuuma Stow N' Go 160 Gas Grill with Regulator



Equivalent to Magma A10-703

- High quality, lightweight 304 stainless steel.
- Grilling power: 9,000 BTU/HR.
- Features: Regulator control knob, mountable, stay cool handle, latching lid, folding legs, removeable grease tray.
- Cooking surface area: 160 square inches.
- 1"-20 Throwaway cylinder threads.
- Designed for high pressure propane - disposable or larger refillable tanks.
- Dimensions: 18-11/16" L x 10-5/16" D x 10-3/4" H.

Order No. Mfg. No. / Description List Price
689002 (58130) **\$259.19** F0-3418100

Kuuma Stow N' Go 160 Charcoal Grill



Equivalent to Magma A10-703

- High quality, lightweight 304 stainless steel.
- Features: Mountable, stay cool handle, latching lid, folding legs, removeable grease tray.
- Uses any standard charcoal.
- Cooking surface area: 160 square inches.
- Dimensions: 18-11/16" L x 10-5/16" D x 10-3/4" H.

Order No. Mfg. No. / Description List Price
689123 (58110) **\$245.19** F0-3617100

Kuuma Profile 216 Marine Gas Grill



- High quality, lightweight 304 stainless steel.
- Grilling power: 13,000 BTU/HR.
- Features: Regulator control knob, mountable, stay cool handle, latching lid, folding legs, removeable grease tray.
- Cooking surface area: 216 square inches.
- 1"-20 Throwaway cylinder threads.
- Designed for high pressure propane - disposable or larger refillable tanks.
- Dimensions: 19-7/8" L x 12" D x 6-7/8" H.

Order No. Mfg. No. / Description List Price
1833797 (58161) **\$211.49** F0-4084100

Kuuma Profile 150 Marine Grill



- High quality, lightweight 304 stainless steel.
- Gas with regulator (1"-20 threads).
- Features: Regulator control knob, mountable, stay cool handle, folding legs, removeable grease tray.
- Cooking surface area: 150 square inches.
- Dimensions: 19-7/8" L x 9-7/8" D x 6-5/8" H.

Order No. Mfg. No. / Description List Price
1833727 (58121) **\$209.99** F0-9964100

LIMITED QUANTITIES

- Electronics
- Trolling Motors
- Instruments
- Electrical
- Lighting
- Anchor & Dock
- Safety
- Steering, Controls
- Pumps
- Fuel System
- Seating & Pedestals
- Trailering
- Tops & Covers
- Perform.
- Propellers
- Engine & Care
- Cleaning & Care
- Paint & Paint Acc.
- Fun & Flotation
- Topside Acc.**
- Cockpit & Deck
- Hardware, Fasteners
- Camouflage
- Misc.
- Comm.

Springfield Grill Packages



550245



7001312

- Models convert to table top grill.
- 189 sq. in. grill cooking surface. 130 sq. in. griddle surface on top of lid.
- 12,000 BTU rating.
- Use with a 1 lb. propane tank (not included).

GRILL WITH MULTI-FIT MOUNT KIT

- Multi-fit kit adapts to 1" round, 1-1/4" and 1-1/2" rails.

Order No.	Mfg. No. / Description	List Price	
550245	(1940054)	\$286.99	F0-9800200

GRILL WITH TRAILER HITCH MOUNT

Order No.	Mfg. No. / Description	List Price	
7001312	(1940057)	\$388.39	F0-7817200

Kuuma Pedestal Grill Mount



- Includes pedestal, hardware and base ring.
- Fits all Kuuma Grills.
- The perfect way to mount your Kuuma grill in stationary locations such as a dock, deck, swim platform or patio.
- Height 30".

Order No.	Mfg. No. / Description	List Price	
689013	(58184)	\$139.79	F0-5879000

Kuuma 60° Rod Holder Mount



- Works with most 60° rod holders with cross pins.
- Kuuma's rod holder mount enables you to turn any fishing rod holder into a grill mount.
- The rod holder mount has a 60 degree angle and an adjustable height.
- Made of anodized aluminum with stainless steel hardware.

Order No.	Mfg. No. / Description	List Price	
689015	(58180)	\$59.19	F0-3414000

Kuuma Rail Grill Mount



- Designed to mount your Kuuma grill to your boat's railing.
- Made of anodized aluminum with stainless steel hardware.
- For use with 7/8" to 1-1/4" horizontal round square rail.
- Inboard/outboard style mount is designed to allow your grill to hang outside the rail, helping to protect fiberglass from spills and splatters.

Order No.	Mfg. No. / Description	List Price	
689490	(58182)	\$57.09	F0-6993000

Kuuma Replacement Regulator



- Fits grills **1833727** (58121), 58131, 58140, **689021** (58155), **1833797** (58161), 58162 and **689022** (58173).

Order No.	Mfg. No. / Description	List Price	
689844	(58275)	\$54.59	F0-1283000

Kuuma Grill Cover/Totes



- For use on a mounted grill as a cover or a portable grill as a tote.
- Heavy duty weather resistant acrylic provides long lasting protection in every storage environment.

Order No.	Mfg. No. / Description	List Price	
689907	(58300) Cover for 125, 150, 160	\$50.39	F0-7253000
689921	(58303) Cover for 216, 316	\$69.59	F0-1784000

Kuuma Quick Connect Regulator



- Fits grills **689002** (58130) and 57251.

Order No.	Mfg. No. / Description	List Price	
689856	(58356)	\$54.79	F0-5383000

- Electronics
- Trolling Motors
- Instruments
- Electrical
- Lighting
- Anchor & Dock
- Safety
- Steering, Controls
- Pumps
- Fuel System
- Seating & Pedestals
- Trailering
- Tops & Covers
- Perform.
- Propellers
- Engine & Care
- Cleaning & Care
- Paint & Paint Acc.
- Fun & Flotation
- Topside Acc.
- Cockpit & Deck
- Hardware, Fasteners
- Camouflage
- Misc.
- Comm.

Kysek The CodeBlue Mini Temperature Sensor



- You're on the road. Your Kysek cooler is packed underneath a mountain of supplies and equipment, but you need to check your ice status, Kysek's CodeBlue Mini Temperature Sensor allows you to monitor ice and temperature without ever opening the lid.
- Plus, set temperature alerts, input reminders on when to restock ice and much more.

- | | |
|------------------------------|---------------------------------|
| A. Switch between °C and °F. | G. CodeBlue battery life. |
| B. Enable audible alarms. | H. Ice chest internal humidity. |
| C. Ice chest temperature. | I. CodeBlue signal strength. |
| D. Low temperature alarm. | J. Trends/information log. |
| E. Time to refill counter. | K. Current outdoor conditions. |
| F. High temperature alarm. | |

Order No. Mfg. No. / Description
582300 (ECCB/MINI01)

List Price
\$32.09 B0-8882000

**LIMITED
 QUANTITIES**

Airhead Aqua Oasis

AIRHEAD



- Removable insulated leak-proof nylon cooler with shoulder strap.
- 6 numbered drink holders.
- Molded rope holder for EZ tie-ups.
- 24 pack cans capacity.
- Recessed storage compartment.
- Base features heavy gauge PVC construction with RF welded seams.

Order No. Mfg. No. / Description
596523 (AHA0-1)

List Price
\$39.99 Z0-9082000

**MAP
 PRICING**

Marpac Cooler Mounts



- Fits almost any cooler.
- Secure coolers or tackle boxes.
- Corrosion proof design.
- Prevents damage by securing loose coolers from sliding.
- Easy cooler removal with quick disconnecting bungees.
- Uses #8 fasteners (Not included).
- Includes: (4) Corner supports and (2) bungee cords with stainless steel clip.

Order No. Description List Price
7-7048 Cooler Mounts **\$12.69** G0-0580000

T-H Marine Cooler Mounting Kit



- The molded, UV resistant corner brackets have interior screw mounting holes to allow a flush mount against surfaces and to take up less deck space.
- Fits virtually all sizes of coolers.
- The nylon bungee straps feature molded hooks and a stainless center hook for totally corrosion-proof mounting.
- Kit includes: (4) Corner brackets and (2) Bungee straps.

Order No. Mfg. No. / Description List Price
639856 (CMK-1-DP) **\$27.39** F0-7191000

Marpac Wall Mount Bottle Opener



- Corrosion resistant 304 stainless steel.
- Uses 1/4" fasteners (not included).

Order No. Description List Price
7-0971 Wall Mount Bottle Opener **\$3.79** G0-4520000

**LIMITED
 QUANTITIES**



SPECIAL HANDLING MAY APPLY



Electronics

Trolling Motors

Instruments

Electrical

Lighting

Anchor & Dock

Safety

Steering, Controls

Pumps

Fuel System

Seating & Pedestals

Trailering

Tops & Covers

Perform.

Propellers

Engine & Care

Cleaning & Care

Paint & Paint Acc.

Fun & Flotation

Topside Acc.

Cockpit & Deck

Hardware, Fasteners

Camouflage

Misc.

Comm.

Huck Performance Bucket

HUCK
PERFORMANCE
BUCKETS

SPECIAL ORDER
DROPSHIP FROM
FACTORY



- **Solid Handle** won't hold odor like rope or nylon - 600 lb. + rating.
- **Stayput Handle System.**
- **Interior Graduation Marks** at the gallon and 1/2 gallon levels.
- **"Spaghetti Pot" Side Handles** aids maneuverability and prevents vapor lock between stacked buckets.
- **Elevating Bucket Feet** allows water and airflow underneath bucket.
- **Stainless Steel Hardware** - marine-grade, chrome-dipped.
- **Non-marking Non-skid Rubber** feet and side handles for excellent grip.
- **Widened Base** - 8% wider than average buckets helps reduce tip overs.
- **Structural Rib System** enhances dimensional stability, adds impact resistance.
- **Scalloped Finger Indents** in foot and side handles for better control.

Marpac Universal Mount Drink Holder

MARPAC



- Mounts with suction cups to any smooth surface.
- Mounts to any vertical or horizontal rails with supplied adapters.
- White polyethylene is easy to clean.
- Stainless steel fasteners.

Order No.	Description	List Price	
7-0962	Universal Mount Drink Holder	\$70.99	G0-6041000

TACO Marine 2-Tumbler Poly Holder

TACO
MARINE

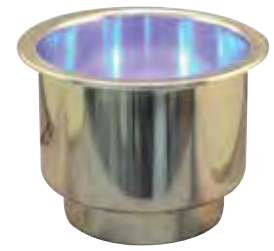


- UV-stabilized high density white polymer.
- Double holder holds (2) 16 to 30 oz. tumblers.
- Dual drain holes on recessed bottom.
- Holds tumbler at proper height to prevent tipping.
- Includes mobile device cutout and charging cable port.
- Includes suction cups.
- Dimensions: 5-15/16" H x 9-7/8" W x 6-3/16" D.
- White.

Order No.	Mfg. No. / Description	List Price	
444500	(P01-2020W)	\$75.79	F0-5035000

Marpac L.E.D. Cup Holder

MARPAC



- Marine grade stainless steel.
- Ideal replacement for most cup holders.
- Glows blue when lit.
- Nylon hose barb for 3/8" hose.
- Cut-out size 3-1/2".
- Overall flange OD 4-1/4".
- Included self-adhesive gasket.

Order No.	Description	List Price	
7-0974	LED Cup Holder	\$21.59	G0-7441000

S & M Marine L.E.D. Cup Holder Insert

S & M Marine Products



- Soft blue light for evening use.
- Unique design allows use with most stainless steel and plastic beverage holders in current boats.
- Made from opaque polymer material and acrylics.
- UV-enhanced foam insulator pad adhered to inside bottom.
- Built-in drain hole.
- Pressure sensitive switch on bottom. Four little 3/16" legs for stability.
- A stand-alone part with a captive battery supply (3) AAA batteries (Not included) and a 3-way on/intermittent/off switch.

Order No.	Mfg. No. / Description	List Price	
326310	(SM400)	\$14.19	F0-3990000

LIMITED QUANTITIES

TACO Marine 2-Drink Poly Holder with Catch All

TACO
MARINE



- UV-stabilized, high-density white polyethylene.
- Holds full-size insulated drink and/or mug.
- Includes strong suction cup mounts.
- Hidden fasteners.
- Height, 3-1/4", width 16-1/4", depth 5-1/4".

Order No.	Mfg. No. / Description	List Price	
3440003	(P01-2000W)	\$111.59	F0-1187000

Attwood Molded Plastic Gimballing Drink Holder

attwood



- Self-leveling drink holders with slot for coffee cup handle.
- For boats, cars, and RVs.
- Molded plastic. Includes gimballing surface mounting bracket.
- Self-draining.
- Dimensions: 4" H x 4-3/8" W.
- Black.

Order No.	Mfg. No. / Description	List Price	
1141635	(11635-4)	\$8.79	F0-5160000

- Electronics
- Trolling Motors
- Instruments
- Electrical
- Lighting
- Anchor & Dock
- Safety
- Steering, Controls
- Pumps
- Fuel System
- Seating & Pedestals
- Trailering
- Tops & Covers
- Perform.
- Propellers
- Engine & Care
- Cleaning & Care
- Paint & Paint Acc.
- Fun & Flotation
- Topside Acc.
- Cockpit & Deck
- Hardware, Fasteners
- Camouflage
- Misc.
- Comm.

Attwood Formed Wire Gimballed Drink Holder



- Formed chrome plated steel drink holders are ideal for boats, cars and RVs.
- Includes a gimbaled surface mounting bracket that keeps drinks level to prevent spills.
- Includes mounting screws.
- Standard size, ideal for 12-ounce cans.

Order No. Mfg. No. / Description
1141167 (11670-4)

List Price
\$9.79 FO-5860000

Attwood Fold-Up Drink Holder



- Polycarbonate construction.
- Flip the small ring up to hold small drinks; for large drinks, flip the small ring down and use the large ring.
- When not in use, flip ring(s) down and close the cover for convenient storage.
- 7/8" closed depth.
- Four holes for #10 screws.
- Dimensions: 4-5/8" H x 4-9/16" W x 4-3/4" D.
- Black.

Order No. Mfg. No. / Description
1142445 (2445-7)

List Price
\$8.89 FO-5860000

T-H Marine Cup Holders



- Made from super-tough poly material.
- UV tested and will not fade as others do.
- Hose fitting on the bottom to accept 3/8" ID hose.
- Any spills, spray or rain water can be drained to the bilge area.
- Holds insulated or un-insulated cans and 16 oz. bottles.
- Depth: 4-1/4", diameter 4-1/4", flange diameter: 4-5/16".

Order No. Mfg. No. / Description
642264 (LCH-1-DP) Black
642276 (LCH-1W-DP) White

List Price
\$2.39 FO-7610000
\$2.39 FO-7610000

Drop-In Recessed Drink Holders



- These injection molded plastic cup holders are available in two different sizes and colors.
- Both sizes have drain holes.

LIMITED QUANTITIES

STANDARD DRINK HOLDERS - 2-7/8" x 2-3/4" DIAMETER

Order No. Mfg. No. / Description List Price
2000943 (90-9800-01) Black **\$3.39** HO-3020000
2000944 (90-9800-41) White **\$3.69** HO-1220000

OVER-SIZED DRINK HOLDERS - 3" x 3-3/4" DIAMETER, LIP OD 4-1/4"

Order No. Mfg. No. / Description List Price
2000945 (90-9804-01) Black **\$5.59** HO-5330000
2000946 (90-9804-41) White **\$4.69** HO-1820000

Marpac Adjustable Drink Holders



- Made of reinforced nylon construction with stainless steel springs and nickel plated brass rivets.
- Pop-up adjustable arms hold a variety of containers.
- Mounts on any flat surface.
- Folding design saves space when not in use.
- Includes: Stainless steel mounting screws.

Order No. Description List Price
7-0575 Black **\$4.99** GO-4330000
7-0960 White **\$4.79** GO-1230000

Boater Sports Fold-Down Drink Holder



- Folding drink holder with pop-up adjustable arms.
- Non-corrosive material, mounting hardware included.
- Gray.

Order No. Mfg. No. / Description List Price
1-52014 (52014) **\$5.89** GO-5930000

LIMITED QUANTITIES

Marpac Stainless Steel Cup Holder



- Stainless steel. Ideal replacement for your plastic cup holder.
- Cut-out size: 3-1/2". Overall flange OD: 4-1/4".
- Nylon hose barb for 1/4" hose.
- Includes self-adhesive gasket.

Order No. Description List Price
7-0961 Stainless Steel Cup Holder **\$13.69** GO-7190000

T-H Marine Stainless Steel Cup Holder



- Made from top quality stainless steel for long lasting use.
- Full 3-5/8" diameter fits most existing cup holes.
- Drain designed to accommodate a 3/8" hose.
- Cup depth 4". Flange 4-1/8".

Order No. Mfg. No. / Description List Price
3420509 (LCH-1SS-DP) **\$19.99** G1-9921000

Beckson Super Size Series Cup Holders



- This is a two step model.
- The inner step holds cans and air horns and the outer step holds can with insulators, wine bottles, etc.
- Width 3-9/16". Flange 4-3/8". Cup depth 3-1/4".
- Hole cut: 3-7/8".

Order No. Mfg. No. / Description List Price
1214301 (GH43-B1) Black **\$8.09** LQ-5040000
1214302 (GH43-W1) White **\$8.09** LQ-5040000



- Electronics
- Trolling Motors
- Instruments
- Electrical
- Lighting
- Anchor & Dock
- Safety
- Steering, Controls
- Pumps
- Fuel System
- Seating & Pedestals
- Trailering
- Tops & Covers
- Perform.
- Propellers
- Engine & Care
- Cleaning & Care
- Paint & Paint Acc.
- Fun & Flotation
- Topside Acc.
- Cockpit & Deck
- Hardware, Fasteners
- Camouflage
- Misc.
- Comm.

Wise Portable Stainless Double Cup Holder for Pontoon Furniture



- Dual stainless steel cup holders.
- 3-5/8" diameter insert accommodates larger tumblers, also features a 3" diameter recessed drop to hold cans, cups, etc.
- Upholstered, high impact plastic frame construction.
- Weighted drop down retainer ensures snug fit between back rest and seat cushions.
- Height 4-5/8", length 7-1/2", width 12-1/4".
- Color: Platinum and Mocha Java.

LIMITED QUANTITIES

Order No. Mfg. No. / Description
3870075 (3059-1884)

List Price
\$70.09 F0-6094000

Accon Drink Holders



Single Drink Holder



Double Drink Holder

- Marine grade 316 stainless steel construction or marine grade aluminum.
- Easily removes when not needed, simply snap back into place when needed again.
- Surface mount, no cut-outs are necessary.
- Fastens with two #10 screws (not included).
- Diameter 3-1/2".

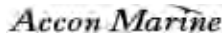
SINGLE DRINK HOLDERS

Order No.	Mfg. No. / Description	Material	Price
Special Order	(401-W-SDH) Stainless Steel		Price On Request
Special Order	(401-AL-W-SDH) Aluminum		Price On Request

DOUBLE DRINK HOLDERS

Order No.	Mfg. No. / Description	Material	Price
Special Order	(401-W-DDH) Stainless Steel		Price On Request
Special Order	(401-AL-W-DDH) Aluminum		Price On Request

Accon Quick Store Systems



- Attaches to our line of quick release drink holders (Not included).
- Durable, breathable, water repellent vinyl coated polyester mesh fabric.
- Antimicrobial properties make it resistant to mold and mildew.
- Sunbrella acrylic binding.
- UV resistant thread.
- Strap products utilize polypropylene webbing.
- Hook and loop fasteners and closures.

Order No.	Mfg. No. / Description	Price
Special Order	(QSDH1) Single	Price On Request
Special Order	(QSDH2) Double	Price On Request
Special Order	(QSDH3) Triple	Price On Request

Marpac Gear Caddy with Suction Cups



- Holds 1 set of pliers and carabiner, 2 knives, 13 hook and lure holders.
- UV protected, weather and corrosion proof.
- Screw or suction cups for customizable installation.

Order No.	Description	List Price	Part No.
7-2426	Boat Caddy	\$14.39	G0-4690000

Marpac Electronics Caddy



- Storage compartments keep personal items organized and accessible.
- Includes slots to hang hooks and lures.
- Easy installation and removal for security and portability.
- No tools required.
- White.

Order No.	Description	List Price	Part No.
7-2422	Electronics Caddy	\$6.99	G0-8640000

Marpac Gear Caddy with Suction Cups



- Large storage compartment with drink holder.
- Two large suction cups for easy installation and removal.
- Optional permanent mounting with screws (not included).
- No tools required.
- White.

Order No.	Description	List Price	Part No.
7-2420	Boat Caddy	\$13.19	G0-4880000

Marpac Single Drink Holder Caddy



- Includes slots to hold knives, pliers, hooks and lures.
- Two large suction cups for easy installation and removal.
- Optional permanent mounting with screws (not included).
- No tools required.
- White.

Order No.	Description	List Price	Part No.
7-2424	Single Drink Holder Caddy	\$7.49	G0-2050000

Tempress Cockpit Organizer



- Suction mounts on any smooth surface in cockpit or cabin.
- Holds fishing gear, binoculars or personal items.
- Can be mounted with screws.

Order No.	Mfg. No. / Description	List Price	
500997	(2133-1)	\$12.19	EO-4190000

Rig Rite Stow-zall Storage Nets



- Creates a storage area under the front of your boat lift canopy!
- Store water skis, tubes, lifejackets, fishing rods, tackle boxes, landing nets, etc.
- Mesh allows wet items to dry, reducing mold.
- Protects gear from sun, rain, wind and theft.
- Installs with quick release clips (No tools required).
- Measure the inside width of your canopy frame to determine the correct size.
- Length 5'.

Order No.	Mfg. No. / Description	List Price	
2971108	(1108) Fits Widths 108" to 117"	\$139.99	FO-9979000
2971120	(1120) Fits Widths 118" to 120"	\$144.99	FO-9410100

Taylor Made Stepsafe Non-Slip Pad



- StepSafe will retain its grip wet or dry and is resistant to gas, oil, and UV rays.
- Comes with a pressure sensitive backing for easy installation and trims easily with scissors to almost any size and shape.
- Use on gunnels, swim platforms, aluminum ladders, stair rungs, transoms or anywhere you step and could slip!
- Cut size: 3-1/2" x 14-1/2".

Order No.	Mfg. No. / Description	List Price	
3451990	(11990)	\$21.99	HO-9131000

Lifesafe Anti-Slip Safety Grit Tape



- Durable in wet or dry conditions.
- Pre-cut, self-adhesive strips are easy to use, simply peel and stick.
- Improves footing on metal trailer frames during cleaning, maintenance and boat launching.
- Dimensions: 2" x 15".
- Black.

Order No.	Mfg. No. / Description	List Price	
228233	(RE36029)	\$15.99	FO-9111000

Rig Rite "Boatgo" Storage Nets



- Store life jackets, clothes, tackle, etc. Keeps items from blowing out of your boat.
- 8 hooks and screws.
- Width stretches from 10" to 16".

Order No.	Mfg. No. / Description	List Price	
2971200	(1200) Length 42"	\$24.99	G1-4261000
2971210	(1210) Length 52"	\$24.99	G1-4261000

Rig Rite Cargo Net Plastic Hooks



- Black plastic hook for cargo nets.
- 4 per bag.

Order No.	Mfg. No. / Description	List Price	
2971140	(1140)	\$3.59	G1-3320000

Gator Guards GatorSkinz Step Pads



Grit



Pebble

- GatorSkinz is a traction step pad made out of 70% recycled materials featuring a grit or pebble finish.
- Uses our exclusive adhesive system.
- A Prep-Peel-Stick application with no curing time that will bond to metal, fiberglass, wood and virtually anywhere you need a grip.
- Great for Watercraft, Motorhomes, Trailers, Golf Carts, Jet Skis, Stairs, Running boards, ATV's and more!



DIMENSIONS 4" x 16" (SOLD 2 PER PACK)

Order No.	Mfg. No. / Description	List Price	
402020	(9044) Pattern: Grit Black	\$22.49	FO-4751000
402022	(9051) Pattern: Grit Light Gray	\$22.49	FO-4751000
402023	(9082) Pattern: Grit Vanilla	\$22.49	FO-4751000
402024	(9068) Pattern: Grit White	\$22.49	FO-4751000
402021	(9037) Pattern: Pebble Black	\$22.49	FO-4751000

DIMENSIONS 12" x 24" (SOLD EACH)

Order No.	Mfg. No. / Description	List Price	
402025	(9013) Pattern: Grit Black	\$22.49	FO-4751000
402027	(9020) Pattern: Grit Light Gray	\$22.49	FO-4751000
402031	(9129) Pattern: Grit White	\$22.49	FO-4751000
402033	(9075) Pattern: Grit Vanilla	\$22.49	FO-4751000
402035	(9006) Pattern: Pebble Black	\$22.49	FO-4751000

- Electronics
- Trolling Motors
- Instruments
- Electrical
- Lighting
- Anchor & Dock
- Safety
- Steering, Controls
- Pumps
- Fuel System
- Seating & Pedestals
- Trailering
- Tops & Covers
- Perform.
- Propellers
- Engine & Care
- Cleaning & Care
- Paint & Paint Acc.
- Fun & Flotation
- Topside Acc.
- Cockpit & Deck
- Hardware, Fasteners
- Camouflage
- Misc.
- Comm.

- Electronics ■
- Trolling Motors ■
- Instruments ■
- Electrical ■
- Lighting ■
- Anchor & Dock ■
- Safety ■
- Steering, Controls ■
- Pumps ■
- Fuel System ■
- Seating & Pedestals ■
- Trailer ■
- Tops & Covers ■
- Perform. ■
- Propellers ■
- Engine & Care ■
- Cleaning & Care ■
- Paint & Paint Acc. ■
- Fun & Flotation ■
- Topside Acc. ■
- Cockpit & Deck ■
- Hardware, Fasteners ■
- Camouflage ■
- Misc. ■
- Comm. ■

Cannon Magnum Electric Downriggers



4742300



4742305



4742310

- 250-feet-per-minute retrieval speed.
- Auto Up - Automatic weight retrieval.
- Removable side plate.
- Positive Ion Control.
- Dual axis adjustable rod holder.
- Three-Digit depth counter.
- 20 lb. weight capacity.
- Enclosed boom end pulley.
- Choice of a 24" heavy duty boom or a heavy duty telescopic boom extends from 24" to 53".
- IP68 waterproof connections.
- 360° swivel base and mounting base.
- 250' of 150 lb. test stainless steel cable.
- Integrated ball storage hook.
- Two line release.
- Limited lifetime warranty.

MAG 5 ST

• Features a standard mounting base and 24" heavy duty boom.

Order No.	Mfg. No. / Description	List Price	
4742300	(1902300)	\$607.99	D0-9368400

MAG 10 STX

• Upgrade to a Mag 10 STX for a 360° swivel base and a boom that extends from 24" to 53".

Order No.	Mfg. No. / Description	List Price	
4742305	(1902305)	\$740.69	D0-5529500

MAG 10 STX-TS - TOURNAMENT SERIES

• Upgrade and get a stainless steel spool (and bottom) to handle monofilament and super lines.

Order No.	Mfg. No. / Description	List Price	
4742310	(1902310)	\$994.89	D0-1959700

Cannon Uni-Troll Manual Downriggers



4741130



4741140

- Fast retrieval speed - 2:1.
- One-hand clutch deploy.
- Dual axis rod holder.
- 20 lb. weight capacity.
- Easy-Access universal base.
- Three-Digit depth counter.
- Enclosed boom end.
- 200' of 150 lb. test stainless steel cable.
- Includes line release.
- Integrated ball storage hook.
- Ergonomic crank handle.
- Limited lifetime warranty.

UNI-TROLL 10 STX

• Features a plastic spool and telescoping boom that extends from 24" to 53".

Order No.	Mfg. No. / Description	List Price	
4741130	(1901130)	\$397.99	D0-9381300

UNI-TROLL 10 STX-TS - TOURNAMENT SERIES

• Features a stainless steel spool and stainless steel telescoping boom that extends from 24" to 53".

Order No.	Mfg. No. / Description	List Price	
4741140	(1901140)	\$560.29	D0-3284400

Cannon Lake-Troll Manual Downrigger



- Retrieval speed - 1:1.
- One-hand clutch deploy.
- Tube style rod holder.
- 8 lb. weight capacity.
- Quick mount tab-lock base.
- Swivel head depth counter.
- 100' of 135 lb. test stainless steel cable.
- Includes line release.
- Features a plastic spool and 18" copolymer boom.
- Limited lifetime warranty.

Order No.	Mfg. No. / Description	List Price	
4741250	(1901250)	\$221.09	D0-7867100

Cannon Aluminum Mounting Tracks



- Tracking system allows for full customization of trolling spreads while fishing with downriggers, rod holders, pencil weights, dipsy divers or planer boards.
- Aluminum construction won't break down or corrode over time.
- Includes mounting hardware.

Order No.	Mfg. No. / Description	List Price	
4744025	(1904025) Length 6"	\$48.39	D0-1783000
4744027	(1904027) Length 18"	\$77.39	D0-1916000
4744028	(1904028) Length 24"	\$87.09	D0-7696000

Cannon Aluminum Swivel Base Downrigger Pedestals



- For surface or track mounting, this smooth-action swivel base provides for 360° rotation, with 16 locking points spaced every 22.5°.
- The top plate is pre-drilled and tapped for mounting Cannon downriggers, as well as other downrigger brands.
- Height 4".

Order No.	Mfg. No. / Description	List Price	
4744032	(1904032)	\$125.79	D0-3600100

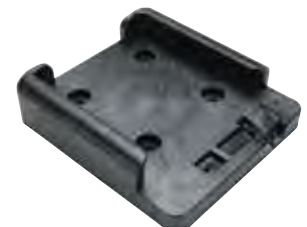
Cannon Low-Profile Swivel Bases



- With 16 locking points, this base allows for 360° downrigger rotation with locking positions every 22.5°.
- Composite components and stainless steel construction make the standard model as strong as it is versatile.
- Also available in a 316 grade stainless steel model for added strength and corrosion resistance.
- Standard.

Order No.	Mfg. No. / Description	List Price	
4747003	(2207003)	\$89.89	D0-1917000

Cannon Tab Lock Base



- Allows for easy removal and replacement of Lake-Troll, Sport-Troll, Legacy Easi-Troll, and Mini-Mag downriggers.
- Built with heavy duty Lexan for corrosion and UV resistance.

Order No.	Mfg. No. / Description	List Price	
4747001	(2207001)	\$40.49	D0-9323000

Cannon Gimbal Mounts



- Mount your downrigger in 30° flush mount rod holders with these sturdy, corrosion resistant gimbal mounts.
- For added corrosion protection, step up to the stainless steel model.
- 1-1/2" O.D. tube.
- Standard.
- Tube length 12".

Order No.	Mfg. No. / Description	List Price	
4740928	(2250928)	\$89.89	D0-1917000

Cannon Mounting Bases



- Mounting base for Magnum, Digi-Troll, Uni-Troll and Easi-Troll Models.
- Features heavy duty composite construction for strength and UV resistance.
- Upgrade to the 316 stainless steel model for unrivaled protection against rusting, pitting and corroding.
- Standard.

Order No.	Mfg. No. / Description	List Price	
4744040	(1904040)	\$35.99	D0-9782000

Cannon Rail/Side Mount



- Built to secure downrigger to the "T" joints on rails of boats with narrow gunwales.
- Built with machined aluminum and powder coated to resist corrosion.
- Standard.

Order No.	Mfg. No. / Description	List Price	
4740940	(2250940)	\$89.89	D0-1917000

Electronics

Trolling Motors

Instruments

Electrical

Lighting

Anchor & Dock

Safety

Steering, Controls

Pumps

Fuel System

Seating & Pedestals

Trailer

Tops & Covers

Perform.

Propellers

Engine & Care

Cleaning & Care

Paint & Paint Acc.

Fun & Flotation

Topside Acc.

Cockpit & Deck

Hardware, Fasteners

Camouflage

Misc.

Comm.

Cannon Flash Weights™



- Vinyl coated to prevent scratching the side of the boat, uses reflective prism tape on the fin for extra fish attraction.

Order No.	Mfg. No. / Description	List Price	
4745180	(2295180) 6 lbs.	\$53.89	D0-1134000
4745182	(2295182) 8 lbs.	\$62.89	D0-1305000
4745184	(2295184) 10 lbs.	\$71.89	D0-1575000
4745190	(2295190) 12 lbs.	\$80.89	D0-1746000

Cannon Flush Mount Power Ports



- Power port allows for quick thru-hull connection to a Cannon downrigger power cable.
- It quickly connects to the yellow female battery end plug from your downrigger, with no need to cut or splice wires.
- The watertight cover and gasket shield your downrigger plug from corrosion when not in use.

Order No.	Mfg. No. / Description	List Price	
4743012	(1903012) Black	\$15.29	D0-3221000
4743013	(1903013) White	\$15.29	D0-3221000

Cannon Battery End Cable



- Compatible with all Cannon electric downriggers manufactured 2008 or later.
- Tethered end cap prevents corrosion.
- Watertight connection to 12 volt power source.
- Product is approximately 3' long, end to end.
- The conductor wire gauge is 14 AWG.
- Rated for 30 amps.

Order No.	Mfg. No. / Description	List Price	
1480013	(1903017)	\$35.99	D0-9782000

Cannon Terminator Kit™



- Includes six each of the superior Cushion Cartridges, Cannon Terminators and Snap Swivels.

Order No.	Mfg. No. / Description	List Price	
4740060	(2250002)	\$34.29	D0-3472000

Cannon Uni-Line Release



- Two adjustment points allow tension settings from 2 to 22 lbs.
- Perfect for slow trolling with live baits or going after light-hitting walleyes.
- Easy one-hand tension release for use on any test line in saltwater or freshwater.

Order No.	Mfg. No. / Description	List Price	
4740009	(2250009)	\$16.19	D0-5921000

Cannon Uni-Stacker Release



- All the characteristics of the Uni-Line Release, with an extra stacker clip to allow fishing at multiple depths off a single weight.

Order No.	Mfg. No. / Description	List Price	
4740105	(2250105)	\$18.89	D0-1151000

Cannon Pinch-R-Release



- Spring-action clip opens quickly and easily with finger pressure.
- The deeper the line is set back in the pads, the greater the tension.
- Tension settings range from 2 to 12 lb.

Order No.	Mfg. No. / Description	List Price	
4740111	(2250111)	\$17.09	D0-7631000

- Electronics
- Trolling Motors
- Instruments
- Electrical
- Lighting
- Anchor & Dock
- Safety
- Steering, Controls
- Pumps
- Fuel System
- Seating & Pedestals
- Trailing
- Tops & Covers
- Perform.
- Propellers
- Engine & Care
- Cleaning & Care
- Paint & Paint Acc.
- Fun & Flotation
- Topside Acc.
- Cockpit & Deck
- Hardware, Fasteners
- Camouflage
- Misc.
- Comm.

TACO Marine Aluminum Tele-Outrigger Poles



- Satin/polished anodized aluminum pole with stainless steel type 316 rings and tips.
- Telescopes to less than 6' for bridge clearance, trailering and storage.
- Designed for use with Grand Slams, Striker Bases and other universal mounts that accept 1-1/2" or 1-1/8" outriggers.
- Reduces stress on gunnels when used with Striker Bases and on T-Tops when used with Grand Slams.
- Sold in pairs.

ANODIZED ALUMINUM SILVER WITH GOLD RINGS AND TIPS

Order No.	Mfg. No.	Length	Diameter	Boat Size	List Price	
444012	(OT-0441VEL15)	15'	1-1/8"	Up to 30'	\$866.89	F0-2860600
444050	(OT-0551VEL186)	18'	1-1/2"	Up to 34'	\$1,239.29	F0-0576800

ANODIZED ALUMINUM SILVER WITH SILVER RINGS AND TIPS

Order No.	Mfg. No.	Length	Diameter	Boat Size	List Price	
444017	(OT0442VEL15)	15'	1-1/8"	Up to 30'	\$866.89	F0-2860600
444074	(OT0552VEL186)	18'	1-1/2"	Up to 34'	\$1,239.29	F0-0576800

ANODIZED ALUMINUM BLACK WITH GOLD RINGS AND TIPS

Order No.	Mfg. No.	Length	Diameter	Boat Size	List Price	
444024	(OT-0441BKA15)	15'	1-1/8"	Up to 30'	\$866.89	F0-2860600
444062	(OT-0551BKA186)	18'	1-1/2"	Up to 34'	\$1,020.59	F0-1441700

TACO Marine Carbon Fiber Tele-Outrigger Pole



- UV-resistant, clear coated black carbon fiber/stainless steel pole with silver rings & tips.
- Stainless steel type 316 collars and rings.
- Double outrigger line design on the 16' and triple outrigger line design on the 20' for either mono or Dacron.
- Patent pending swivel roller design mechanism allows for movement of the rollers to swivel in the direction of lures or bait for a more natural swimming action which results in hooking more fish.
- Telescopes to less than 8' for bridge clearance, trailering and storage.
- Designed for use with universal or Taco Sport Fishing Grand Slam mounts that accept 1-1/2" outriggers.
- Includes a nylon mesh carry bag to protect poles.
- Includes adjustable roller line caddy with brass rollers allowing for easy rigging to the t-top or gunnel and better line management.
- Locking collar design keeps poles from extending when trailering or running full speed and also keeps poles from collapsing when fully extended.
- Sold in pairs.

Order No.	Mfg. No.	Length	Diameter	Boat Size	List Price	
444103	(OT-3160CF)	16'	1-1/2"	Up to 35'	\$3,489.99	F0-9924420
444113	(OT-4200CF)	20'	1-1/2"	Up to 50'	\$4,169.79	F0-5881920

TACO Marine Heavy Duty Aluminum Tele-Outrigger Poles



- Satin/polished anodized aluminum pole with stainless steel type 316 rings and tips.
- Telescopes to less than 6' for bridge clearance, trailering and storage.
- Designed for use with Grand Slams, Striker Bases and other universal mounts that accept 1-1/2" or 1-1/8" outriggers.
- Reduces stress on gunnels when used with Striker Bases and on T-Tops when used with Grand Slams.
- For boats up to 30'.
- Length 15', diameter 1-1/2".
- Sold in pairs.

ANODIZED ALUMINUM SILVER WITH GOLD RINGS AND TIPS

Order No.	Mfg. No. / Description	List Price	
444036	(OT-0541VEL15-HD)	\$980.69	F0-8468600

ANODIZED ALUMINUM SILVER WITH SILVER RINGS AND TIPS

Order No.	Mfg. No. / Description	List Price	
751252	(OT-0542VEL15-HD)	\$980.69	F0-8468600

ANODIZED ALUMINUM BLACK WITH GOLD RINGS AND TIPS

Order No.	Mfg. No. / Description	List Price	
444048	(OT-0541BKA15-HD)	\$980.69	F0-8468600

TACO Marine Grand Slam 390 Outrigger Top Mount



- Sleek appearance.
- Stronger gusset support and thicker arm for enhanced durability.
- Elevation crank handle provides lift from under the T-top.
- Allows for horizontal rotation from under the T-top.
- Offset handle for better hand clearance.
- Cast stainless-steel Type-316L and machined aluminum construction.
- Strong locking head allows perfect positioning.
- Compatible with: TACO Aluminum Tele-Outrigger Poles (444050, 444062 and 444062) or Carbon Fiber Tele-Outrigger Poles (444103).
- Patent number US7114283.
- Tested and proven quality.
- 3-year limited warranty.

Order No.	Mfg. No. / Description	List Price	
444169	(GS-390)	\$4,178.79	F0-5152920



SPECIAL HANDLING MAY APPLY



- Electronics
- Trolling Motors
- Instruments
- Electrical
- Lighting
- Anchor & Dock
- Safety
- Steering, Controls
- Pumps
- Fuel System
- Seating & Pedestals
- Trailering
- Tops & Covers
- Perform.
- Propellers
- Engine & Care
- Cleaning & Care
- Paint & Paint Acc.
- Fun & Flotation
- Topside Acc.
- Cockpit & Deck
- Hardware, Fasteners
- Camouflage
- Misc.
- Comm.

- Electronics
- Trolling Motors
- Instruments
- Electrical
- Lighting
- Anchor & Dock
- Safety
- Steering, Controls
- Pumps
- Fuel System
- Seating & Pedestals
- Trailering
- Tops & Covers
- Perform.
- Propellers
- Engine & Care
- Cleaning & Care
- Paint & Paint Acc.
- Fun & Flotation
- Topside Acc.
- Cockpit & Deck
- Hardware, Fasteners
- Camouflage
- Misc.
- Comm.

TACO Marine Grand Slam 280 Outrigger Top Mount



- For use on 20-foot to 36-foot fishing boats.
- Fits both hardtop and soft top applications.
- Designed to fit the industry standard TACO Marine Outrigger-Ready mounting plate.
- Rugged stainless steel and anodized aluminum construction.
- 12 locking fishing positions.
- Use TACO Marine's spline lock technology for secure outrigger elevation.
- Ergonomic-shaped rotator lever.
- Polished stainless steel type 316 arm and lever.
- Brushed anodized aluminum body.
- Top-mounted.
- 4" x 6" mounting base.
- Compatible with Taco 1-1/2" diameter tele-outrigger poles.
- Fits TACO Marine's Clamp-on Mounting Plates.
- Dimensions: 15" H x 13-1/4" W x 5" D.
- Sold in pairs.

Order No.	Mfg. No. / Description	List Price	
444165	(GS-280)	\$2,255.79	F0-5097510

TACO Marine Grand Slam 170 Outrigger Top Mount



- Locks every 18°.
- Designed for use with standard 1-1/8" butt OD outriggers.
- Uses TACO Marine's Spline Lock Technology for secure outrigger elevation.
- Rugged, sure-grip knob adjusts and locks-in desired height and laydown position for safe trailering and navigation under bridges.
- Delrin bearings and stainless steel internal locking mechanism offers smooth adjustment, secure positioning and prevents movement.
- Stainless steel arm with locking features ensures TACO Marine Outriggers remain securely in place.
- Polished 316 stainless steel arm assembly.
- Brushed anodized aluminum body
- 4" x 6" mounting base.
- Compatible with Taco 1-1/8" diameter tele-outrigger poles.
- Dimensions: 5-1/2" H x 9-3/4" W x 5" D.
- Sold in pairs.

Order No.	Mfg. No. / Description	List Price	
444140	(GS-170)	\$1,379.69	F0-8756900

TACO Marine Striker Base Gunnel Mounts



- Polished stainless steel type 316.
- Unique hex nut locking design offers multiple fishing positions.
- Ambidextrous 45° arms ideal for trolling from gunnel.
- Removable arms allow for unobstructed gunnel.
- Sold in pairs.

Order No.	Mfg. No. / Description	List Price	
444101	(F16-0212-F) Base Dimensions: 1-1/8"	\$383.49	F0-4486200
444098	(F16-0150-F) Base Dimensions: 1-1/2"	\$744.09	F0-6802500

TACO Marine Outrigger Base Reducer



- Aluminum with nylon outer sleeve.
- Reduces the inside diameter from 1-1/2" to 1-1/8" to accept the 1-1/8" diameter outriggers.

Order No.	Mfg. No. / Description	List Price	
444010	(GSC-0025-1)	\$153.59	F0-1570100

TACO Marine Grand Slam Backing Plates



- To provide strength for your outriggers when installed through your T-top, our TACO Grand Slam Backing Plates are the answer.
- Designed perfectly to slide over the mount bases of the GS-280, 2801 and 380, these plates will save your T-top from potential damage caused by outrigger torque when extended.
- Provides strength to base.
- Matches existing base hole pattern.
- No drilling.
- Length 6-1/2", width 5", 1/4" thick.
- Sold in pairs.

Order No.	Mfg. No. / Description	List Price	
444175	(BP-150BSY-320-1)	\$151.49	F0-4060100

TACO Marine Outrigger Line Caddy



- Black nylon with stainless steel hardware.
- Clamps to outriggers to eliminate tangling and maintain rigging lines when outriggers are retracted.
- Adjustable to fit both 1-1/8" and 1-1/2" outrigger poles.
- Inside diameter: 1-1/8" and 1-1/2".
- Sold in pairs.

Order No.	Mfg. No. / Description	List Price	
444122	(F40-0030BKA-1)	\$53.69	F0-8573000

TACO Marine Premium Triple Mono Rigging Kit



- Rigging kit contains:
 - Ronstan triple roller pulley shock cord with stainless steel snap hook
 - 1/8" thick, 50 yd. coil of Lindgren Pitman 400# Monofilament in black
 - Adjustable tension release clips
 - Cork outrigger ball stops
 - Stainless steel eye strap and screws
 - Double sleeve crimps
 - Coastlock-style swivels and snap swivels
 - Quick dry mesh bag

Order No. **444016** Mfg. No. / Description (RK-0003MP) List Price **\$515.59** F0-1906300

TACO Marine Premium Double Rigging Kit



- To rig 1 pair of outriggers up to 22 ft.
- Rigging kit contains:
 - Ronstan triple roller pulley shock cord with stainless steel snap hook
 - (4) quality release clips
 - Shock cord with stainless steel snaps and pulley
 - Barrel swivels
 - Snap swivels
 - Crimps
 - Stainless steel pad eyes
 - Balsa wood floats and screws
 - 200 ft. of UV protected 1/8" thick Dacron line
 - Quick dry mesh bag

Order No. **444015** Mfg. No. / Description (RK-0002MP) List Price **\$236.29** F0-0456100

TACO Marine Premium Rigging Kit



- Rigs up to 22' outriggers.
- Rigging kit contains:
 - Single roller pulley shock cord with stainless steel snap hook and eye insert
 - Black dacron rigging cord
 - Adjustable tension release clip
 - Red & white balsa wood stop
 - Pad eye with screws
 - Double sleeve crimp
 - Swivel
 - Snap swivel
 - Quick dry mesh bag
- Length 100'.
- Sold each.

Order No. **443995** Mfg. No. / Description (RK-0001PB) List Price **\$138.59** F0-1079000

TACO Marine Standard Rigging Kit



- Rigs up to 22' outriggers.
- Rigging kit contains:
 - Glass ring with brass snap clip
 - Black dacron rigging cord
 - Adjustable tension release clip
 - Round balsa wood stop
 - Pad eye with screws
 - Double sleeve crimp
 - Swivel
 - Snap swivel
 - Quick dry mesh bag
- Length 100'.
- Sold each.

Order No. **444009** Mfg. No. / Description (RK-0001SB) List Price **\$112.49** F0-4787000

Perko Fig. 1104 Side Mount Rod Holder



- Black polymer with chrome plated brass mounting brackets.
- Tube ID 1-5/8", tube OD 2".
- Length 9".
- Bracket width 3-1/4".
- Uses #8 fasteners.

Order No. **531992** Mfg. No. / Description (1104 DPO BLK) List Price **\$33.29** F0-0332000

Perko Fig. 1100 Side Mount Rod Holder



- Chrome plated brass tube and mounting brackets.
- Hard black polymer liner
- Tube ID 1-5/8", tube OD 2".
- Length 9".
- Bracket width 3".
- Uses #8 R.H. fasteners.

Order No. **531916** Mfg. No. / Description (1100 DPO CHR) List Price **\$68.69** G0-2064000

LIMITED QUANTITIES

T-H Marine Rod Holders - Vertical Side Mount



- Injection molded of UV stabilized poly material for strength and durability.
- Fixed standoffs.
- Length 11-3/4" with an inside diameter of 1-7/8".
- The spacing between the two mounting holes is 6-1/4".
- Holes are provided for screw mounting either individually or in multiples on a rack.
- A slot is provided for the reel to slip into to prevent the rod from moving.

Order No. **641731** Mfg. No. / Description (RHSF-3FW) White List Price **\$8.49** F0-4950000
 Order No. **641743** Mfg. No. / Description (RHSF-3B-DP) Black List Price **\$13.29** F0-0390000

- Electronics
- Trolling Motors
- Instruments
- Electrical
- Lighting
- Anchor & Dock
- Safety
- Steering, Controls
- Pumps
- Fuel System
- Seating & Pedestals
- Trailering
- Tops & Covers
- Perform.
- Propellers
- Engine & Care
- Cleaning & Care
- Paint & Paint Acc.
- Fun & Flotation
- Topside Acc.
- Cockpit & Deck
- Hardware, Fasteners
- Camouflage
- Misc.
- Comm.

Cannon Dual-Axis Adjustable Rod Holder



- Experience 360° of rotation at the push of a button with this 10" holder.
- Features six up and down locking positions, a pistol grip release for quick, one-handed angle changes and a ratcheting adjustment system that allows you to quickly position the holder vertically.
- Includes a UV-resistant end cap to protect rod and reel.

Order No. Mfg. No. / Description List Price
1487023 (1907002) **\$125.79** D0-3600100

Taco Marine Stainless Steel Clamp-On Adjustable Rod Holders



- Polished stainless steel type 316.
- Adjustable clamp to fit multiple pipe and tube sizes.
- For use on vertical and horizontal pipe/tube.
- Rotate and lock in fishing angle - every 18°.
- Includes foam-fitted PVC anti-fungal white liner and white insert.
- Rod holder 1-5/8" ID.

Order No.	Mfg. No.	Clamp Fits OD	List Price	
444288	(F16-2600POL-1)	7/8" & 1" (Tube)	\$175.39	F0-7722100
444282	(F16-2623POL-1)	1-1/16" & 1-5/16" (Pipe), 1-1/4" (Tube)	\$185.49	F0-4892100
444186	(F16-2630POL-1)	1-11/16" & 1-15/16" (Pipe)	\$211.59	F0-1184100

Perko Fig. 1215 Clamp-On Rod Holder



- Chrome plated zinc alloy clamp, polished stainless steel tube and hard polymer black liner.
- Clamp-on feature eliminates drilling rail and simplifies relocation.
- Mounts on vertical or horizontal rails.
- Length 9".
- Tube ID 1-5/8", tube OD 2".
- Fits rails 3/4" to 1" in diameter.
- Adjustable as supplied for 7/8" to 1" rails.
- Adaptable to 3/4" rails by reducing the mounting bolt length.

Order No. Mfg. No. / Description List Price
533345 (1215 DPO CHR) **\$98.89** F0-2296000

Marpac Tournament Clamp-On Rod Holder



- Polished stainless steel.
- Clamp-on, Tulip style.
- 32 rod angles make this one of the most versatile rod holders available.
- White vinyl liner.
- For use with 1-1/4" tube or 3/4" pipe.

Order No.	Description	List Price	
7-0898	Clamp-On Rod Holder	\$88.89	G0-6595000

Marpac Stainless Steel Clamp-On Rod Holder



- Cast 316 stainless steel.
- Adjustable for 7/8" or 1" rail installation.
- Can be mounted on horizontal or vertical rails.
- Composite liner.
- Overall length 9".
- 1-1/2" ID.

Order No.	Description	List Price	
7-0897	Clamp-On Rod Holder	\$50.49	G0-3833000

Marpac Flush Mount Rod Holder



- Heavy duty cast stainless steel with UV resistant liner.
- Overall length 9-1/2".
- 1-7/8" ID.
- 30° angle.

Order No.	Description	List Price	
7-0890	Flush Mount Rod Holder	\$41.29	G0-6672000

Marpac Flush Mount Rod Holder



- Type 304 stainless steel with UV resistant liner and cap.
- Overall length 9-1/2".
- 1-7/8" ID.
- 30° angle.
- Includes (3) M5 x 35 oval head stainless steel screws.

Order No.	Description	List Price	
7-0891	Flush Mount Rod Holder	\$22.59	G0-4151000

Perko Vertical Flush Mount Rod Holder



- Chrome plated bronze flange with stainless steel tube and hard polymer black liner.
- Includes flange gasket with integral flip-up cap.
- Length under flange 9".
- Tube ID 1-5/8", tube OD 2".
- Uses #10 fasteners.

Order No.	Mfg. No. / Description	List Price	
538580	(0447 DP1 CHR)	\$136.49	F0-4559000

Lee's Vertical Flush Mount Rod Holder



- Polished stainless steel.
- Full length white vinyl insert.
- Top flange is crowned for maximum strength and appearance.
- All edges are rounded.
- Diameter 2", length 8-5/8".
- Inside diameter 1-5/8".
- Classic rod holder open ended - standard 1/4" round pin.

Order No.	Mfg. No. / Description	List Price	
444810	(RH527VS)	\$117.99	G0-5097000

- Electronics
- Trolling Motors
- Instruments
- Electrical
- Lighting
- Anchor & Dock
- Safety
- Steering, Controls
- Pumps
- Fuel System
- Seating & Pedestals
- Trailering
- Tops & Covers
- Perform.
- Propellers
- Engine & Care
- Cleaning & Care
- Paint & Paint Acc.
- Fun & Flotation
- Topside Acc.
- Cockpit & Deck
- Hardware, Fasteners
- Camouflage
- Misc.
- Comm.

Marpac Flush Mount Rod Holders



- Molded nylon plastic.
- 30° angle.
- Use with rods under 1-1/2" diameter.
- Uses #10 fasteners (not included).
- Hole required for installation: 2-1/2" x 2-1/4".

BLACK

Order No.	Description	List Price	
7-0437	Sold Each Per Card	\$6.79	GO-5540000
7-0437S	Sold 24 Per Display Box	\$136.09	GO-8119000

WHITE

Order No.	Description	List Price	
7-0438	Sold Each Per Card	\$7.19	GO-2840000
7-0438S	Sold 24 Per Display Box	\$144.49	GO-1869000

Perko Fig. 448 Angled Flush Mount Rod Holder



- Chrome plated bronze flange, brass tube with soft polymer black liner.
- Includes flange gasket with integral flip-up cap.
- Tube ID 1-5/8", tube OD 2".
- Length under flange: 8".
- Flange dimensions: 4-1/4" x 3-1/2".
- Uses 1/4" fasteners.

Order No.	Mfg. No. / Description	List Price	
538554	(0448 DP1)	\$136.49	F0-4559000
538869	(0482 DP1 BLK) Lip and Liner	\$20.49	F0-4341000
538441	(0480 DPO BLK) Cap and Gasket Kit	\$18.89	F0-2231000

Perko Fig. 1205 Angled Flush Mount Rod Holder



- Chrome plated zinc alloy flange, anodized aluminum tube with soft polymer black liner.
- Includes flange gasket with integral flip-up cap.
- Tube ID 1-5/8", tube OD 2".
- Length under flange: 8".
- Flange dimensions: 4-1/4" x 3-1/2".
- Uses 1/4" fasteners.

Order No.	Mfg. No. / Description	List Price	
533299	(1205 DPO CHR)	\$83.89	F0-2785000
538869	(0482 DP1 BLK) Lip and Liner	\$20.49	F0-4341000
538441	(0480 DPO BLK) Cap and Gasket Kit	\$18.89	F0-2231000

T-H Marine Rod Holders - Flush Mount



- Injection molded of ABS plastic for a long lasting durable part.
- 90° rod holder for vertical fishing rod position.
- Drain hole molded in bottom.
- Top measures 2-1/2" x 4" on the flange.
- Overall length is 9-1/2" with a 1-1/2" inside diameter.
- Install in 2" hole.
- All units have a molded in, rod index in bottom.

Order No.	Mfg. No. / Description	List Price	
641745	(RH-2-DP) Black	\$9.49	F0-4660000
641746	(RH-2FW-DP) Fish White	\$9.09	F0-6360000

Perko Fig. 452 Angled Flush Mount Rod Holder



- Polished stainless steel flange and tube with soft polymer black liner.
- Includes flange gasket with integral flip-up cap.
- Tube ID 1-5/8", tube OD 2".
- Length under flange: 8-1/4".
- Flange dimensions: 4-1/8" x 3-3/8".
- Uses #10 fasteners.

Order No.	Mfg. No. / Description	List Price	
538629	(0452 DPO STS)	\$110.29	F0-0277000
538869	(0482 DP1 BLK) Lip and Liner	\$20.49	F0-4341000
538453	(0481 DPO BLK) Cap and Gasket Kit	\$18.89	F0-2231000

Lee's 30° Flush Mount Rod Holders



- Polished stainless steel.
- Full length white vinyl insert.
- Top flange is crowned for maximum strength and appearance.
- All edges are rounded.
- Classic rod holder open ended - standard 1/4" round pin.

Order No.	Mfg. No.	Diameter	Length	Inside Diameter	List Price	
444846	(RH525SS)	2"	8"	1-5/8"	\$117.99	GO-5097000
444858	(RH530SS)	2-1/4"	10"	1-13/16"	\$149.79	GO-6300100
444911	(RH526)	White Vinyl Insert for		444846 (RH525SS)	\$15.69	GO-1501000

- Electronics
- Trolling Motors
- Instruments
- Electrical
- Lighting
- Anchor & Dock
- Safety
- Steering, Controls
- Pumps
- Fuel System
- Seating & Pedestals
- Trailer
- Tops & Covers
- Perform.
- Propellers
- Engine & Care
- Cleaning & Care
- Paint & Paint Acc.
- Fun & Flotation
- Topside Acc.**
- Cockpit & Deck
- Hardware, Fasteners
- Camouflage
- Misc.
- Comm.

TACO Marine 4-Rod Transom Mount Rack



- Brushed anodized aluminum.
- Spline adjustment technology.
- Long-lasting performance and appearance.
- Adjustable to fit any boat's transom.
- Maximize on-board rod storage.
- Foam-fitted PVC white liner.
- Width 40-3/4", height 9-3/4".
- Rod holder ID 1-7/8".

Order No.	Mfg. No. / Description	List Price	
444306	(F31-3504BSA-1)	\$448.29	F0-0831300

Marpac One Piece Rod and Tool Holders



7-0966



7-0967



- Compact design.
- Solid molded construction.
- Mounts to any flat, vertical surface.
- Fasteners included.

HOLDS UP TO 2 POLES, KNIFE, SCREW DRIVERS OR FISH HOOKS

Order No.	Description	List Price	
7-0967	Measures: 8-3/4" W x 10-3/4" H	\$12.39	G0-0380000

HOLDS UP TO 3 POLES, KNIFE, PLIERS, SCREW DRIVERS OR FISH HOOKS

Order No.	Description	List Price	
7-0966	Measures: 12-1/2" W x 10-3/4" H	\$11.99	G0-3080000

TACO Marine 4-Rod Deluxe Poly Rod Rack



- UV-stabilized polyethylene.
- Lightweight and durable construction.
- Slotted rod holders lock-in most conventional and spinning outfits.
- This 4-rod storage unit organizes your rods, pliers and knives in the precise location for your needs.
- Rod holder ID: 1-3/4".
- Dimensions: 18" W x 11-15/16" H.

Order No.	Mfg. No. / Description	List Price	
3440075	(P03-064W)	\$91.19	F0-3836000

TACO Marine Aluminum Rod Racks



444214



- Brushed anodized aluminum.
- Hidden fasteners.
- Slotted to lock-in rods/reels.
- Foam-fitted PVC black liner.
- Designed for light tackle spinning rod/reel combos.
- Height 8-5/8".
- Rod holder ID 1-1/2".

Order No.	Mfg. No. / Description		List Price	
444206	(F31-3003BSA-1) For 3 Rods	Length 11-1/4"	\$265.39	F0-7758100
444214	(F31-3004BSA-) For 4 Rods	Length 16"	\$373.89	F0-2716200

444206

Boater Sports Rod Holders



- The rod holder and storage feature is a great place to store your pliers and fillet knives.
- Made of high impact white plastic that resists chips and cracks and can be cleaned with soap and water.
- Black nylon.

LIMITED QUANTITIES

Order No.	Mfg. No. / Description	List Price	
1-52213	(52213) For 2 Rods	\$22.29	H0-7331000
1-52215	(52215) For 3 Rods	\$33.09	H0-5891000

TACO Marine Stand-Off Surface Mount Rod Holder



- UV-stabilized high-density polyethylene.
- Front access hole.
- Integrated standoffs for easy mounting.
- Rod holder ID: 1-3/4".

Order No.	Mfg. No. / Description	List Price	
3440079	(P04-011W) Includes Stainless Steel Hardware	\$15.89	F0-2111000
3440080	(P04-091W)	\$4.59	F0-1230000

- Electronics
- Trolling Motors
- Instruments
- Electrical
- Lighting
- Anchor & Dock
- Safety
- Steering, Controls
- Pumps
- Fuel System
- Seating & Pedestals
- Trailering
- Tops & Covers
- Perform.
- Propellers
- Engine & Care
- Cleaning & Care
- Paint & Paint Acc.
- Fun & Flotation
- Topside Acc.
- Cockpit & Deck
- Hardware, Fasteners
- Camouflage
- Misc.
- Comm.

Marpac Adjustable Rod Holder



- Nylon rod holder mounts in one of 4 ways - top mount, side mount, rail mount, or square rail mount.
- Swivels and pivots to different angles.
- Black.



LIMITED QUANTITIES

Order No. Description List Price
7-52227 Adjustable Rod Holder **\$29.29** F0-0502000

Cannon Rod Holder



- Three-position configuration delivers fast baitcast or spinning rod pickup.
- Spring-loaded tension knob allows for quick rod adjustment.
- Its 360° base can be top or side mounted.



Order No. Mfg. No. / Description List Price
4740169 (2450169-1) **\$19.39** D0-1551000

Attwood Heavy Duty Adjustable Rod Holder



- Designed for use with bait casting and spinning reels.
- Features an ergonomic design and easy-to-find rapid-release latch.
- The large, easy-grip lock-nut offers an easy 180° vertical adjustment range for a variety of rod tip height settings.



Order No. Mfg. No. / Description List Price
237669 (5009-4) **\$24.69** F0-8271000

Attwood Pro Series Rod Holder



- Designed for use with bait casting and spinning reels.
- Heavy duty, deep-tooth gear lock securely holds rod holder in mounting base.



Order No. Mfg. No. / Description List Price
237674 (5010-4) **\$34.39** F0-7042000

Attwood 2-In-1 Adjustable Rod Holder



- Features fixed vertical angle to optimize rod positioning.
- Smaller size is perfect for medium and light action gear.
- Rod throat opening fits most standard and ultra-light rods up to 1-3/16" diameter.
- Locking ring fits spinning reel handle shanks up to 7/16" diameter.
- Available as a double-pack.



Order No. Mfg. No. / Description List Price
237809 (RH-4646) **\$23.69** F0-8561000

Attwood Heavy Duty Rod Holder Accessories



HEAVY DUTY ROD HOLDER EXTENSION

- For use with all Attwood mounts including combo mount, Attwood standard side mounts, and other leading rod holder mounts.
- Complete with all necessary hardware to mount to round or square 7/8" to 1-1/4" diameter rail.



Order No. Mfg. No. / Description List Price
237621 (5016-3) **\$11.29** F0-0970000

HEAVY DUTY RAIL MOUNT

- For use with the Heavy Duty Combo Mount.
- Complete with all necessary hardware to mount to rails from 3/4" to 1-1/4" width.

Order No. Mfg. No. / Description List Price
237619 (5012-7) **\$11.09** F0-6770000

HEAVY DUTY COMBO MOUNT

- The combo rod holder mount allows for mounting in multiple configurations.
- This new design offers an improved fit with positive lock for secure rod holder mounting.
- Can be mounted on side or top of gunwale.
- Compatible with all Attwood and other leading rod holder mounting patterns.

Order No. Mfg. No. / Description List Price
2350091 (5011-7) **\$8.89** F0-2260000

Attwood Flush Mount



- Mounts flush to gunwale or deck.
- Easy-open cover conceals fasteners and elastomeric liner seals water out.
- When closed the low profile, smooth, contoured design avoids snagging lines.



Order No. Mfg. No. / Description List Price
237633 (5022-7) **\$6.59** F0-1640000

Attwood Heavy Duty Clamp-On Rod Holder Mount



- Heavy duty adaptor clamp easily mounts rod holder to gunwale or transom.
- Ideal for aluminum fishing boats and pontoons.
- Works together with Attwood's Heavy Duty Combo Mount **2350091** (5011-7) and other Attwood fishing accessories.
- Mounting hardware included.

NEW PRODUCT

Order No. Mfg. No. / Description List Price
237645 (5030-4) **\$25.89** F0-2181000



- Electronics
- Trolling Motors
- Instruments
- Electrical
- Lighting
- Anchor & Dock
- Safety
- Steering, Controls
- Pumps
- Fuel System
- Seating & Pedestals
- Trailering
- Tops & Covers
- Perform.
- Propellers
- Engine & Care
- Cleaning & Care
- Paint & Paint Acc.
- Fun & Flotation
- **Topside Acc.**
- Cockpit & Deck
- Hardware, Fasteners
- Camouflage
- Misc.
- Comm.

Scotty Power Lock Rod Holders



- Manufactured with fibre reinforced engineering grade nylon.
- Universal cradle holds almost any rod and reel setup and has a front locking ring to prevent rod loss when travelling.
- Fully adjustable up and down and with 360° of horizontal rotation.
- Power Lock Interior Diameter: 1.95".
- Mount Dimensions: 4" x 2" x 2".
- Bolting Dimension: 1-5/16" x 3-3/16".

Order No.	Mfg. No. / Description	List Price	
3102301	(0230-BK) Includes 241 Side Deck Mount	\$29.49	G0-6791000
3102311	(0231-BK) Includes 244 Flush Deck Mount	\$31.49	G0-0112000

Scotty Baitcaster/Spinning Rod Holders



- Manufactured with fibre reinforced engineering grade nylon.
- Holds a baitcaster reel in a cushioned cradle and a slot at the front also allows for a spinning reel to be securely held in position.
- Pistol grip rod butts easily clear the sides of the rod holder for quick and easy rod retrieval.
- Rods can safely be secured with a soft latching strap which snaps over the top of the rod holder.
- Designed with a side mounted flange, which leaves the bottom open accommodating rod trigger grips.
- Fully adjustable up and down and with 360° of horizontal rotation.
- Baitcaster Interior Diameter: 1.30".
- Mount Dimensions: 4" x 2" x 2". Bolting Dimension: 1 5/16" x 3 3/16".

Order No.	Mfg. No. / Description	List Price	
3102801	(0280-BK) Includes 241 Side Deck Mount	\$27.09	G0-5181000
3102810	(0281-BK) Includes 244 Flush Deck Mount	\$28.59	G0-6191000

Scotty Locking Gunnel Track Mount



- Purpose-built for boats with integrated gunnel tracks.
- This simple, intuitive design allows you to quickly add, remove, or re-position the mount anywhere on the boat, from bow to stern.
- A dependable lock to keep gear solidly in place, and a push-button release makes changes and removal fast and easy.
- Compatible with all of your favourite post mount Scotty accessories.

Order No.	Mfg. No. / Description	List Price	
3102304	(0343-BK)	\$33.99	F0-9732000

Scotty Square Rail Mount



- Fits 1-1/4" square rails.
- Perfect for boats with limited mounting surfaces.
- For all Scotty post mount rod holders.
- Included stainless steel fasteners.

Order No.	Mfg. No. / Description	List Price	
3102431	(0243-BK)	\$12.99	G0-0780000

Scotty Freshwater Rod Holder



- The R-5 Rod Holder has been designed to securely hold your Spincaster, Spinning, Bait Caster, Level Wind, and Fly Rods with up to 15 lbs. test line.
- The 1/4" stainless steel lock bar pivots open to allow a quick effortless release of your rod.
- Easy adjustable lock bar tension.
- Includes 241 side deck mount.
- Designed and built to withstand all conditions.

Order No.	Mfg. No. / Description	List Price	
3100290	(290)	\$36.49	G0-5442000

Scotty Side Deck Mount



- Allows mounting on a flat surface or on the side of a gunnel or transom.
- For all Scotty post mount rod holders.
- Dimensions: 4" x 2" x 2".
- Bolting Dimensions: 1-5/16" x 3-3/16".

Order No.	Mfg. No. / Description	List Price	
3102411	(0241-BK)	\$9.49	G1-7160000

Scotty Flush Deck Mount



- Sealed base for watertight applications.
- For all Scotty post mount rod holders.
- Dimensions: 4" x 2" x 2".
- Bolting Dimensions: 1-5/16" x 3-3/16".

Order No.	Mfg. No. / Description	List Price	
3102441	(0244-BK)	\$10.99	G0-6370000

Scotty Rail Mount Adapter



- Fits 7/8" and 1" diameter round rail and 1" square rail.
- For all Scotty post mount rod holders.
- Works in conjunction with 241 side deck mount (Not included).
- Includes stainless steel fasteners.
- When using with a 1" square rail, substitute 1/4-20 x 2" round head with stainless steel machine screws (Not included).

Order No.	Mfg. No. / Description	List Price	
3102421	(0242-BK)	\$12.09	G0-0180000

Scotty Round Rail Mount



- Fits 1-1/4" round rails.
- Excellent for pontoon boats.
- For all Scotty post mount rod holders and can be positioned anywhere on your rail
- Includes stainless steel fasteners.
- NOTE: This mount can also be converted to a square rail

Order No.	Mfg. No. / Description	List Price	
3102451	(0245-BK)	\$20.09	G0-6431000

Electronics

Trolling Motors

Instruments

Electrical

Lighting

Anchor & Dock

Safety

Steering, Controls

Pumps

Fuel System

Seating & Pedestals

Trailing

Tops & Covers

Perform.

Propellers

Engine & Care

Cleaning & Care

Paint & Paint Acc.

Fun & Flotation

Topside Acc.

Cockpit & Deck

Hardware, Fasteners

Camouflage

Misc.

Comm.

Scotty Rod Holder Height Extender



- Nylon and stainless steel.
- Increase your odds with easier access to your rod and reel.
- Extends the height of a rod holder by 8-1/2".
- Comes with stainless steel shaft for ultimate strength.
- For all Scotty post mount rod holders.

Order No. 3102541	Mfg. No. / Description (254)	List Price \$37.49	G0-2152000
--------------------------	------------------------------	------------------------------	------------

Scotty Rod Holder Height Extender



- Made from super tough re-enforced nylon.
- Increase your odds with easier access to your rod and reel.
- Extends the height of the rod holder by 6-1/2".
- For all Scotty post mount rod holders. (except No. 240 Striker).

Order No. 3102591	Mfg. No. / Description (259)	List Price \$17.89	G0-9911000
--------------------------	------------------------------	------------------------------	------------

Fish-On! Rod Holder with Side Mount



- Adjustable - 360° of horizontal and 90° of vertical.
- Designed with an enlarged opening.
- Features a sliding locking ring to secure your rod.
- Comes equipped with a side mount ready for installation and use.

Order No. 500810	Mfg. No. / Description (72026)	List Price \$32.49	E0-7342000
-------------------------	--------------------------------	------------------------------	------------

Fish-On! Rod Holder



- Adjustable - 360° of horizontal and 90° of vertical.
- Designed with an enlarged opening.
- Features a sliding locking ring to secure your rod.

Order No. 500822	Mfg. No. / Description (72012)	List Price \$26.49	E0-7891000
-------------------------	--------------------------------	------------------------------	------------

Fish-On! Light Tackle Rod Holder with Side Mount



- Perfect for use in smaller boats or for fishermen who target panfish.
- Fits all Fish-On! mounting systems.
- Features full adjustability both horizontally and vertically.
- Includes side mount.

Order No. 500834	Mfg. No. / Description (73002)	List Price \$21.59	E0-9161000
-------------------------	--------------------------------	------------------------------	------------

Fish-On! Side Mount



- Allows additional mounts to be installed wherever necessary.
- Standard 12 position mount installs with (4) self-tapping screws to any flat vertical surface or to a 7/8" or 1" rail with optional Rail Mount Adapter.
- Works with all Fish-On! Products.
- Hardware not included.

Order No. 500923	Mfg. No. / Description (71460)	List Price \$13.19	E0-9890000
-------------------------	--------------------------------	------------------------------	------------

Fish-On! Flush Mount



- Allows you to add extra mounting locations anywhere you want.
- Mounts to any flat horizontal surface, requires 1-1/4" hole and (4) #10 self-tapping screws.
- Use with the Fish-On! Rod Holder Extension to provide increased range of adjustability for your rods.
- Works with all Fish-On! Products.

Order No. 500911	Mfg. No. / Description (71455)	List Price \$10.39	E0-9770000
-------------------------	--------------------------------	------------------------------	------------


Fish-On! Locking Surface Mount



- Installs on a horizontal surface without drilling any large holes in your boat.
- It also raises the rod holder 2" above the gunnels for extra clearance.

Order No. 500947	Mfg. No. / Description (71450)	List Price \$11.59	E0-9680000
-------------------------	--------------------------------	------------------------------	------------

Fish-On! Rail Adaptor Kit



- Works with the Side Mount, the Net/Gaff Holder and the Triple Mount to allow you to mount on any 7/8" or 1" rail.
- Includes all necessary hardware for mounting.

Order No. 500935	Mfg. No. / Description (71465)	List Price \$13.89	E0-2401000
-------------------------	--------------------------------	------------------------------	------------

Fish-On! 6" Rod Holder Extension



- Will fits on any of the Fish-On! Mounts and will work with the Fish-On! Rod Holder, Spinning Holder, Rod Ready and Cup Holders.
- Perfect for use with the flush mount on wide gunnelled boats.
- Comes two per package.

Order No. 500884	Mfg. No. / Description (71350)	List Price \$27.89	E0-2902000
-------------------------	--------------------------------	------------------------------	------------

- Electronics
- Trolling Motors
- Instruments
- Electrical
- Lighting
- Anchor & Dock
- Safety
- Steering, Controls
- Pumps
- Fuel System
- Seating & Pedestals
- Trailering
- Tops & Covers
- Perform.
- Propellers
- Engine & Care
- Cleaning & Care
- Paint & Paint Acc.
- Fun & Flotation
- Topside Acc.
- Cockpit & Deck
- Hardware, Fasteners
- Camouflage
- Misc.
- Comm.

Driftmaster Pro Series Rod Holders and Bases

- Recommended for line weights over 25 lbs.
- 1-3/4" wide for larger rod handles.

- Diameter stem 1/2".
- Bases include 1/2" diameter threaded center hole.

Driftmaster Pro Series Rod Holders



- Holds rod in horizontal position for straight down fishing.
- Has 4" stem.

Driftmaster Pro Series Flatliner Rod Holder



- Holds rod tip at 25°.
- Popular on bass or Jon boats with low sides.
- Keeps rod tip out of water under rough conditions.
- Used for straight down fishing or where bait is cast away from boat.
- Has 4" stem.
- Right hand thread.

Order No.	Mfg. No. / Description	List Price	
7001010 (200-H)	Right Hand Thread	\$26.79	F0-5781000
7001011 (200-HL)	Left Hand Thread	\$26.79	F0-5781000

Order No.	Mfg. No. / Description	List Price	
7001028 (250-H)		\$26.79	F0-5781000

Driftmaster Pro Series Guide Rod Holder



- Holds rod at 0° or 10°.
- Has stabilizers to hold casting reels upright.
- Great for line counter reels.
- Right hand thread.

LIMITED QUANTITIES

Order No.	Mfg. No. / Description	List Price	
7001046 (500-H)		\$33.19	F0-3232000

Driftmaster Pro Series Troller Rod Holders



- Holds rod at 20° or 50°.
- Right hand thread.

Order No.	Mfg. No. / Description	List Price	
7001044 (455-H)	Has 4" Stem	\$33.69	F0-8532000
7001042 (45510-H)	Has 10" Stem	\$43.89	F0-2703000

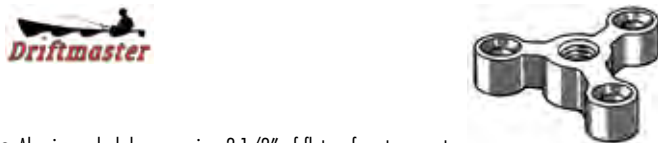
Driftmaster Pro Series Duo Rod Holders



- Holds rod at 0° or 30°.
- Has 4" stem.

Order No.	Mfg. No. / Description	List Price	
7001030 (255-H)	Right Hand Thread	\$33.69	F0-8532000
7001032 (255-HL)	Left Hand Thread	\$33.69	F0-8532000

Driftmaster Aluminum Star Bases



- Aluminum deck base requires 2-1/2" of flat surface to mount.
- Drill 3/16" pilot holes to mount.
- Includes 1/4" screws.

Order No.	Mfg. No. / Description	List Price	
7001006 (200-B)	Right Hand Thread	\$8.99	F0-9260000
7001008 (200-BL)	Left Hand Thread	\$8.99	F0-9260000

Driftmaster Aluminum Flat Base



- Aluminum base requires 1" of flat surface to mount.
- Great for pontoon rails.
- Drill 3/16" pilot holes to mount.
- Right hand thread.

Order No.	Mfg. No. / Description	List Price	
7001012 (201-B)		\$8.99	F0-9260000

Driftmaster Aluminum Universal Clamp



- Aluminum clamp base opens to 1-7/8".
- Works well on Jon boats and piers.
- Has vertical and horizontal threaded holes for rod holder for added versatility.
- Right hand thread.

Order No.	Mfg. No. / Description	List Price	
7001013 (208-B)		\$22.49	F0-4751000

- Electronics
- Trolling Motors
- Instruments
- Electrical
- Lighting
- Anchor & Dock
- Safety
- Steering, Controls
- Pumps
- Fuel System
- Seating & Pedestals
- Trailering
- Tops & Covers
- Perform.
- Propellers
- Engine & Care
- Cleaning & Care
- Paint & Paint Acc.
- Fun & Flotation
- Topside Acc.
- Cockpit & Deck
- Hardware, Fasteners
- Camouflage
- Misc.
- Comm.

Driftmaster Li'l Pro Series Rod Holders and Bases

- Recommended for line weights under 25 lbs.
- 1-3/8" wide for small to medium rod handles.

- Diameter stem 3/8".
- Bases include 3/8" diameter threaded center hole.

Driftmaster Li'l Pro Series Rod Holders



- Holds rod at 5°.
- Has 4" stem.

Order No.	Mfg. No. / Description	List Price	
7001016	(210-H) Right Hand Thread	\$20.29	F0-0241000
7001018	(210-HL) Left Hand Thread	\$20.29	F0-0241000

Driftmaster Li'l Pro Series Flatliner Rod Holder



- Holds rod at 25°.
- Has 4" stem.

Order No.	Mfg. No. / Description	List Price	
7001034	(260-H) Right Hand Thread	\$20.29	F0-0241000
7001036	(260-HL) Left Hand Thread	\$20.29	F0-0241000

Driftmaster Li'l Pro Series Guide Rod Holder



- Holds rod at 0° and 10°.
- Has 4" stem.
- Designed to cradle bait casting reels.
- Works well for line counter reels.

Order No.	Mfg. No. / Description	List Price	
7001048	(510-H) Right Hand Thread	\$28.09	F0-6691000

LIMITED QUANTITIES

Driftmaster Li'l Pro Series Lean Mean Rod Holder



- A simple "no-frills" design.
- Holds rod at 10° and has a 3" plated steel stem.

Order No.	Mfg. No. / Description	List Price	
7001002	(100-H) Right Hand Thread	\$13.59	F0-1590000

Driftmaster Li'l Pro Series Duo Rod Holders



- Holds rod at 0° or 30°.
- Has 4" stem.

Order No.	Mfg. No. / Description	List Price	
7001038	(265-H) Right Hand Thread	\$28.59	F0-1002000
7001040	(265-HL) Left Hand Thread	\$28.59	F0-1002000

Driftmaster Aluminum Star Bases



- Aluminum deck base requires 2-1/2" of flat surface to mount.
- Drill 3/16" pilot holes to mount.
- Includes 1/4" screws.

Order No.	Mfg. No. / Description	List Price	
7001014	(210-B) Right Hand Thread	\$7.99	F0-9550000
7001015	(210-BL) Left Hand Thread	\$7.99	F0-9550000

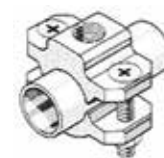
Driftmaster Aluminum Flat Base



- Aluminum base requires 1" of flat surface to mount.
- Great for pontoon rails.
- Drill 3/16" pilot holes to mount.
- Right hand thread.

Order No.	Mfg. No. / Description	List Price	
7001020	(211-B)	\$7.99	F0-9550000

Driftmaster Aluminum Rail Clamp



- Aluminum base clamps to 1" rails.
- Comes with 1/4" bolts and flange nuts.
- Right hand thread.

Order No.	Mfg. No. / Description	List Price	
7001025	(215B)	\$11.19	F0-3870000

Driftmaster Aluminum Side Base



- 90° aluminum base works well for Jon Boat gunnels.
- Comes with 1/4" x 1-1/2" bolts and flange nuts.
- Right hand thread.

Order No.	Mfg. No. / Description	List Price	
7001022	(213-B)	\$7.99	F0-9550000

Driftmaster Aluminum Square Rail Clamp



- Aluminum base clamps to square rails up to 1-3/8".
- Comes with 3/16" stainless bolts and flange nuts.
- Right hand thread.

Order No.	Mfg. No. / Description	List Price	
7001024	(216-B)	\$11.19	F0-3870000

Driftmaster Stainless Round Flush Base



- Stainless flush base is 2-1/2" in diameter with 3 mounting holes.
- Comes with 1/4" stainless screws.
- Right hand thread.

Order No.	Mfg. No. / Description	List Price	
7001054	(SSRB-1)	\$13.59	F0-1590000

- Electronics
- Trolling Motors
- Instruments
- Electrical
- Lighting
- Anchor & Dock
- Safety
- Steering, Controls
- Pumps
- Fuel System
- Seating & Pedestals
- Trailering
- Tops & Covers
- Perform.
- Propellers
- Engine & Care
- Cleaning & Care
- Paint & Paint Acc.
- Fun & Flotation
- Topside Acc.
- Cockpit & Deck
- Hardware, Fasteners
- Camouflage
- Misc.
- Comm.

RAM Mounts Ram Rod® Fishing Rod Holders



- High strength composite fishing rod holder is a must have for the fishing enthusiast.
- Designed to mount vertically in your boat, you can rotate the rod holder 360°, while tilting the cradle forward and back for the optimum angle.
- Post length 6".
- Hole pattern: 1.3" x 3.19".

Order No.	Mfg. No. / Description	List Price	MAP PRICING
672050	(RAM-114-B) With Bulkhead Spline Post Base	\$27.99	ZO-5871000
672052	(RAM-114-F) With Flush Mounting Base	\$29.49	ZO-6091000
2630113	(RAM-114-BMP) With Bulkhead/Flat Surface Base	\$33.99	ZO-4912000

RAM Mounts Ram Rod® Bulkhead Spline Post Base



- High strength composite.
- Contains 4 pre-drilled holes and a socket compatible with RAM ROD and RAM-TUBE holders with a spline post.
- Hole pattern: 1.3" x 3.19".

Order No.	Mfg. No. / Description	List Price	MAP PRICING
2630116	(RAM-114BM)	\$9.49	ZO-3850000

RAM Mounts Ram Rod® Deck and Track Base with Tightening Knobs



- High strength composite.
- Includes a socket compatible with RAM ROD and RAM-TUBE holders with a spline post.
- Designed to attach to Tite-Lok track systems with a 3-1/4" width.
- Hole pattern: 1.3" x 3.19".
- Hardware included: (2) 1/4"-20 x 5/8" knobs and (2) 1/4"-20 nuts.

Order No.	Mfg. No. / Description	List Price	MAP PRICING
2630117	(RAM-114DTM)	\$23.49	ZO-9941000

RAM Mounts Ram Rod® Bulkhead/Flat Surface Base



- High strength composite.
- Can be installed on a flat surface such as the deck or on a vertical surface.
- This mounting base features a locking feature which requires the release of a plunger to remove the rod holder.
- Compatible with RAM post and spline rod holders and RAM wedge mount ball adapters.
- Hole pattern: 1.3" x 3.19".

Order No.	Mfg. No. / Description	List Price	MAP PRICING
2630128	(RAM-114BMP)	\$13.49	ZO-2680000

Attwood "Sure Grip" Steel Rod Holders



- The 3/8" diameter coated steel rod is tough, strong and corrosion resistant.
- UV resistant plastic coating protects the rod butt and handle.
- Stainless steel stem and wing nut.
- All holders include 5071 mounting base.

Order No.	Mfg. No. / Description	List Price	MAP PRICING
237694	(5063-3) 45° Angle 4" Stem, for Trolling	\$18.39	FO-7821000
237695	(5062-3) 25° Angle 4" Stem, for Drifting or Trolling	\$17.39	FO-7121000
237712	(5060-3) 5° Angle 4" Stem, for Hori. Rod Position	\$10.79	FO-5570000
237713	(5061-3) 5° Angle 8" Stem, for Hori. Rod Position	\$19.59	FO-1731000
237709	(5065-3) 5° Angle 4" Stem, for Hori. Rod Position	\$16.09	FO-6211000

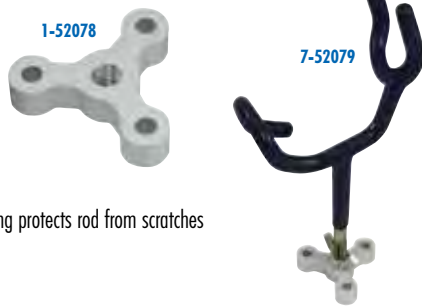
"SURE GRIP" MOUNTING BASES

- Constructed from extruded aluminum.
- Fits vertical surfaces such as a gunwale or rails.

Order No.	Mfg. No. / Description	List Price	MAP PRICING
2350100	(5070-3) Side Mount Base Fits Gunwale or Rail	\$7.39	FO-7150000
239714	(5071-3) Flush Base Fits 2" Flat Surfaces	\$5.69	FO-8930000
239726	(5072-7) Flat Rail Base, Fits Square Rail	\$5.19	FO-3630000
239731	(5074-3) Clamp-On Rail Base Fits Round Rail Up to 7/8" Diameter	\$8.19	FO-3750000
239738	(5073-3) V-Round Rail Base Fits Round Rail Up to 1" Diameter	\$6.29	FO-0440000

- Electronics
- Trolling Motors
- Instruments
- Electrical
- Lighting
- Anchor & Dock
- Safety
- Steering, Controls
- Pumps
- Fuel System
- Seating & Pedestals
- Trailering
- Tops & Covers
- Perform.
- Propellers
- Engine & Care
- Cleaning & Care
- Paint & Paint Acc.
- Fun & Flotation
- Topside Acc.
- Cockpit & Deck
- Hardware, Fasteners
- Camouflage
- Misc.
- Comm.

Marpac Wire Type Rod Holder with Mount



- UV resistant black plastic coating protects rod from scratches and prevents corrosion.
- 3/8" coated steel rod holder.

Order No.	Description	List Price	Mfg. No. / Description
7-52079	Rod Holder with Mount	\$13.39	F0-7390000
1-52078	Mount Only	\$5.69	H0-1430000

Fish-On! Mr. Crappie® Pro Series Rod Holder System Combo



- Allows the use of up to 4 rods per unit while slow trolling for crappie.
- Full adjustability for rod angle, both vertically and horizontally.
- Set up and break down with NO TOOLS REQUIRED.
- The kit includes: (4) Fish-On! Light tackle rod holders, (1) 4 position gang mount and (1) locking surface mount.
- Dimensions: 12" H x 30" W x 3.58" D.
- Black.

Order No.	Mfg. No. / Description	List Price	Mfg. No. / Description
500979	(73000)	\$96.49	E0-7327000

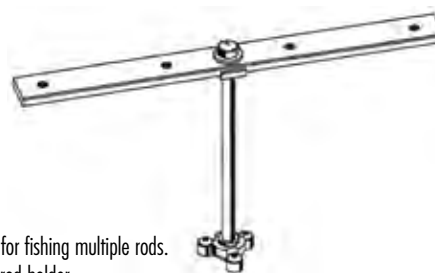
Driftmaster T-250 Series T-Bars



- 18" tall with 3" square stainless base mounts.
- Utilizes a super strong 1-1/2" diameter tube for the vertical stem.
- Unlimited rod adjustment.
- Can be removed and disassembled for storage in about ten seconds.
- Polished stainless base mounts flush and secures with four screws.

Order No.	Mfg. No. / Description	List Price	Mfg. No. / Description
7001060	(T-250)	\$107.39	F0-7157000

Driftmaster Flat Trolling Bar



- Fully adjustable side to side for fishing multiple rods.
- Use with any Li'l Pro Series rod holder.
- Includes: (1) 10" locking stem with star base (200-B) and mounting screws.
- 4 Rod system.

Order No.	Mfg. No. / Description	List Price	Mfg. No. / Description
7001052	(FT18)	\$58.99	F0-9214000

Driftmaster Round T-Bars Systems



- Allow unlimited rod adjustment.
- Full horizontal and vertical adjustment.
- 10" tall x 1/2" diameter vertical stem fits 200-B Star Base (included).
- Stem-lock sprocket locks T-Bar in 12 horizontal positions.
- Locking stem makes these suitable for heavy trolling as well as spider rigging.
- 7001056 includes: Rod holders (210-H), round rail clamp bases (214-B), (1) Round T-Bar, (1) 10" locking stem with star base (200-B) and mounting screws.
- 7001058 does not include rod holders.

Order No.	Mfg. No. / Description	List Price	Mfg. No. / Description
7001056	(T009H) 2 Rod System	\$106.39	F0-7447000
7001058	(T118) 4 Rod System	\$92.69	F0-8846000

Millennium Spyderlok Series Pontoon Boat Rod Holder



- Anodized aluminum construction.
- Great for any boat or pier with existing rails.
- Mounts on 3/4" to 1-1/2" round or square tube.
- Easy and securely mounts on your existing rail, no holes to drill.

Order No.	Mfg. No. / Description	List Price	Mfg. No. / Description
621258	(R-500-00)	\$55.99	E0-9914000

Millennium Marine Spyderlok Series 4 Pole Holder



- All aluminum anodized construction.
- Easily accommodates 4 rod heads with its 20" crossbar
- Smooth and easy pole angle adjustment.
- Easy two knob removal.
- Mounting plate is flush with carpet - No more stumped toes.
- The patented SpyderLok Technology insures tight secure locking angles.
- Exclusive height adjustable crossbar 12" - 20".
- 360° rotational cross bar.
- 360° rod holder rotation.
- Sure lock adjustments with SpyderLok teeth.
- Push or pull crank baits.
- For long lines.
- Fast or slow troll with ease.
- 1 year warranty.

Order No.	Mfg. No. / Description	List Price	Mfg. No. / Description
6030615	(R-100-00)	\$205.99	E0-9445100
6030620	(R-101-00) Extra Base Plate	\$15.99	E0-9911000



6030620



- Electronics
- Trolling Motors
- Instruments
- Electrical
- Lighting
- Anchor & Dock
- Safety
- Steering, Controls
- Pumps
- Fuel System
- Seating & Pedestals
- Trailering
- Tops & Covers
- Perform.
- Propellers
- Engine & Care
- Cleaning & Care
- Paint & Paint Acc.
- Fun & Flotation
- Topside Acc.**
- Cockpit & Deck
- Hardware, Fasteners
- Camouflage
- Misc.
- Comm.

Millennium Marine Spyderlok Series Single Rod Holder



- All anodized aluminum construction.
- Smooth and easy pole angle adjustment.
- Easy two knob removal.
- Mounting plate is flush with carpet - No more stubbed toes.
- No tools necessary for use.
- The patented SpyderLok Technology insures tight secure locking angles.
- Exclusive height adjustment from 12" to 20".
- 360° rotational crossbar.
- 360° rod holder rotation.

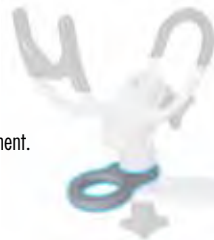
- Sure lock adjustments with SpyderLok teeth.
- Push or pull crank baits.

- For long lining.
- Fast or slow troll with ease.
- Dimensions: 3-1/4" D x 6-1/2" W x 13-1/2" H.
- 1 year warranty.

Order No. Mfg. No. / Description
6030622 (R-200-00)

List Price
\$114.09 E0-7558000

Millennium Marine Spyderlok Series Rapid Rod Transport



- Keeps your rod upright with ease while in transport.
- Prevents rod damage by protecting it from excessive movement.
- Made specifically for the SpyderLok System.
- Dimensions: 4-1/2" x 9" x 1".
- 1 year warranty.

Order No. Mfg. No. / Description
6030626 (R-102-00)

List Price
\$40.09 E0-7003000

TACO Marine 4-Rod Hanger Rack



- Polished marine grade 316 stainless steel rod hangers with durable, UV-stabilized white poly racks.
- Mount vertical, horizontal and overhead.
- Pre-drilled mounting holes and beveled edges install easily and offer a clean look.

Order No. Mfg. No. / Description
444302 (F16-2752-1)

List Price
\$334.79 F0-5343200

Moeller Fishing Rod Holder



- Kit includes (4) 7" lengths of aluminum track, (8) vinyl rod holders and all hardware.
- Securely holds rod tip and handle.
- Permanent set not required; adjustable.
- Mounts vertical or horizontal in boats or storage areas.
- Also ideal for bow/stern light staff holder.

Order No. Mfg. No. / Description
808724 (091025-10)

List Price
\$53.59 F0-1573000

TACO Reel Hangers with Rod Tip Holder Kit



- Marine grade stainless steel type 316L.
- Spring-loaded to secure reels safely in place.
- Delrin inserts to help protect rod guides and tips.
- Mount vertically, horizontally and overhead.
- Concealed installation screws.
- Width 1-1/16", length 4".
- Adjusts from 1-7/8" to 3-7/8".

Order No. Mfg. No. / Description
444315 (F16-2810-1)

List Price
\$115.59 F0-1908000

TACO Marine Rod Hanger Kit



- Securely locks rods in hangers.
- Unique self locking spring. Spring loaded.
- Polished marine grade 316 stainless steel.
- Flush mounting system with hidden fasteners.
- Sold as set.

Order No. Mfg. No. / Description
444290 (F16-2700-1)

List Price
\$85.99 F0-9106000

Lee's Single Rod Rack Set



- Marine grade anodized aluminum with satin silver finish.
- Vinyl insert protects the rod butt.
- Can be mounted horizontally, vertically or overhead.
- Tip of rod is placed into locking end of set and nylon locking ring is rotated to lock it in.
- Sold in sets.

Order No. Mfg. No. / Description
444909 (MC-70)

List Price
\$35.09 G0-1532000

Marpac Horizontal Mount Rod Holder



- Durable polyurethane construction securely holds up to three rods.
- Foam cushions tightly grip rods without damage.
- Easy to install - mounts to any flat surface.
- Includes (8) stainless steel screws.

Order No. Description
7-0963 Rod Holder

List Price
\$14.89 G0-8990000

T-H Marine Rod Storage Holder Rack



- Stores 6 rods neatly and securely.
- Mount horizontally or vertically.
- Foam grip pads.
- Corrosion proof. Durable and lightweight.

Order No. Mfg. No. / Description
6400159 (FRH-1P-DP)

List Price
\$26.89 F0-2881000

RodBuckle Retractable Rod Hold-Down System



- The self-retracting polyester strap extends a full 24" and securely locks into position on the deck.
- The PVC extrusion coated strap grips rods and resists hook penetration.
- When not in use, it neatly retracts out of the way.
- Easy installation with mounting template included.

Order No. Mfg. No. / Description
2000940 (F14200)

List Price
\$33.89 F0-2732000

2094202 (F14202) Add-On Concealed Mount

List Price
\$8.99 G0-2060000

Electronics

Trolling Motors

Instruments

Electrical

Lighting

Anchor & Dock

Safety

Steering, Controls

Pumps

Fuel System

Seating & Pedestals

Trailing

Tops & Covers

Perform.

Propellers

Engine & Care

Cleaning & Care

Paint & Paint Acc.

Fun & Flotation

Topside Acc.

Cockpit & Deck

Hardware, Fasteners

Camouflage

Misc.

Comm.

T-H Marine Rod Tamer® Rod Straps



641692



6400260

- Molded of black polyurethane material that will retain its stretch and remain unaffected by sunlight and most chemicals.
- The straps stretch over rods and hook into a loop mounted on the deck.

GUNWALE MOUNT

- Retracts into gunwale when not in use. Requires 3/4" hole.

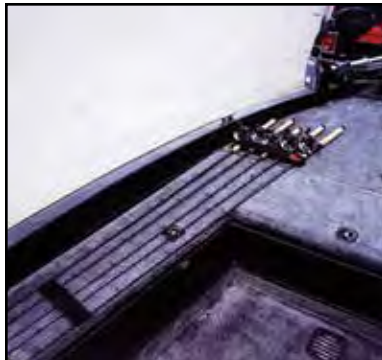
Order No.	Mfg. No. / Description		List Price	
6400260	(RHD-1-DP) Length 12"	Holds Up to 3 Rods	\$18.89	F0-2231000
641748	(RHD-2-DP) Length 18"	Holds Up to 6 Rods	\$20.79	F0-5541000

DECK MOUNT

- The strap ends mounts to the deck with one countersunk screw.

Order No.	Mfg. No. / Description		List Price	
641692	(RT-14-DP) Length 14"	Holds Up to 4 Rods	\$8.99	F0-9260000
641729	(RT-18-DP) Length 18"	Holds Up to 7 Rods	\$11.59	F0-1180000

Rod Saver "Originals"



- Designed to mount rod and reel combo to the deck of the boat.
- It prevents rod and reel from bouncing out of the boat while traveling down the lake.
- Stainless steel mounting hardware included.
- Holds up to 5 rods.

Order No.	Mfg. No. / Description		List Price	
337375	(10RS) 10" Single Strap		\$14.19	F0-3990000
2003750	(10/6 RS) 10" & 6" Set of Straps		\$16.79	F0-5711000

Marpac Adjustable Spring Clamps



- Stainless steel.
- Excellent for boat hooks, flashlights, oars, fishing rods, charts, etc.
- Uses #6 fasteners.
- 2 per card.

MINIMUM ID 5/8", MAXIMUM ID 1-1/4"

Order No.	Description		List Price	
7-0099	Projection 1-1/2", Clamp Width 1/2"		\$7.29	G0-8840000

MINIMUM ID 1", MAXIMUM ID 1-3/4"

Order No.	Description		List Price	
7-0100	Projection 2-1/4", Clamp Width 5/8"		\$10.19	G0-3860000

Marpac Deck Mount Rod Hold Downs



- Deck mount rod hold down.
- Includes: Eye strap and (3) stainless steel screws.

Order No.	Description		List Price	
7-52234	Length 18"		\$6.09	F0-6240000
7-52235	Length 12"		\$7.19	F0-3050000

Millennium Marine Spyderlok Series Rod Transport Rack



- Transport up to eight rods at one time with ease and convenience.
- Helps with easy identification and separation of the rods.
- The patented SpyderLok Technology insures tight secure locking angles.
- Perfect for group fishing trips and excursions.
- Sure lock adjustments with SpyderLok teeth.
- 1 year warranty.

Order No.	Mfg. No. / Description		List Price	
6030624	(R-300-00)		\$226.09	E0-7596100

Rod Saver Pro Model Stretch Rod Savers



- At 14" and 12", they are longer than the Original.
- Double elastic gives twice the strength and durability.
- The elastic allows for the Rod Saver to wrap over many more rods.

Order No.	Mfg. No. / Description		List Price	
2003800	(12PM) 12" Single Strap	Holds Up to 7 Rods	\$16.89	F0-2811000
2003805	(12/6PM) 12" & 6" Set of Straps	Holds Up to 7 Rods	\$22.29	F0-0651000
2003810	(14PM) 14" Single Strap	Holds Up to 8 Rods	\$17.39	F0-7121000
2003815	(14/8PM) 14" & 8" Set of Straps	Holds Up to 8 Rods	\$23.09	F0-6161000

Perko Fig. 502 Spring Clamps



- Stainless steel.
- Uses #6 fasteners.

MINIMUM ID 5/8", MAXIMUM ID 1-1/4"

Order No.	Mfg. No. / Description		List Price	
539582	(0502 DP1 STS) Projection 1-1/2", Clamp Width 1/2"		\$12.39	F0-7680000

MINIMUM ID 1", MAXIMUM ID 1-3/4"

Order No.	Mfg. No. / Description		List Price	
539570	(0502 DP2 STS) Projection 2-1/4", Clamp Width 5/8"		\$14.29	F0-0001000

- Electronics
- Trolling Motors
- Instruments
- Electrical
- Lighting
- Anchor & Dock
- Safety
- Steering, Controls
- Pumps
- Fuel System
- Seating & Pedestals
- Trailering
- Tops & Covers
- Perform.
- Propellers
- Engine & Care
- Cleaning & Care
- Paint & Paint Acc.
- Fun & Flotation
- Topside Acc.**
- Cockpit & Deck
- Hardware, Fasteners
- Camouflage
- Misc.
- Comm.

Marpac Access Hatches - White



7-0618



- Watertight - lid overlapping frame.
- Two separate seals on frame and lid.
- Corrosion free integrated hinges allow 180° opening.
- No visible fasteners.

Order No.	Description	List Price	
7-0617	11" x 15"	\$89.59	FO-1726000
7-0618	13" x 24" (Two Handles)	\$144.29	FO-0010100

T-H Marine Designer Series™ Access Hatches - Locking



- Locking hatches.
- Cam style locks hold lid securely.
- Positive lid seal for watertight fit.
- Hidden fasteners in frame.
- Stainless steel hinges allow 160° opening.
- Structurally engineered "Walk On" lids.
- Height above deck: 5/8".
- Polar White.

Order No.	Mfg. No.	Outside	Cut-Out	List Price	
642309	(HDSL-11152DP)	11" x 15"	8-1/4" x 12-1/8"	\$144.19	FO-3900100
642310	(HDSL-13242DP)	12-7/8" x 23-3/4"	10-1/8" x 21-1/8"	\$179.89	FO-2952100

Bomar Inspection Hatches



- Molded low profile.
- T-handle for easy operation.
- Stainless steel hinge pins.
- UV stabilized resin.
- Non-skid surface.
- Flush mounting.
- I.D. opening 14" x 16", cut out 16-1/4" x 17-5/8", OD 18-1/8" x 20-3/16".
- White.

Order No.	Mfg. No. / Description	List Price	
605736	(G81618-22)	\$204.69	G0-4173100

T-H Marine Designer Series™ Access Hatches - Non-Locking



- Non-locking hatches.
- Cam style locks hold lid securely.
- Positive lid seal for watertight fit.
- Hidden fasteners in frame.
- Stainless steel hinges allow 160° opening.
- Structurally engineered "Walk On" lids.
- Height above deck: 5/8".

POLAR WHITE

Order No.	Mfg. No.	Outside	Cut-Out	List Price	
642279	(HDS-0714-2DP)	7-1/2" x 14-1/4"	5-1/8" x 11-7/8"	\$91.69	FO-8146000
642291	(HDS-1115-2DP)	11" x 15"	8-1/4" x 12-1/8"	\$110.79	FO-5577000
642293	(HDS-1119-2DP)	10-7/8" x 18-7/8"	8-1/4" x 16-1/8"	\$126.59	FO-1688000
642300	(HDS-1317-2DP)	12-7/8" x 16-7/8"	10-1/8" x 14-1/8"	\$135.89	FO-2159000
642307	(HDS-1324-2DP)	12-7/8" x 23-3/4"	10-1/8" x 21-1/8"	\$151.59	FO-1160100
642314	(HDS-1330-2DP)	12-7/8" x 29-3/4"	10-1/8" x 27"	\$186.19	FO-3303100

BLACK

Order No.	Mfg. No.	Outside	Cut-Out	List Price	
642297	(HDS-1115-1DP)	11" x 15"	8-1/4" x 12-1/8"	\$110.79	FO-5577000

Rabud Handle Lever Series Hatches



- UV stabilized.
- Acetone resistant polypropylene.
- Molded-in stainless steel hinges for all-weather performance.
- Gasketed enclosure assures a weathertight seal on the 100° opening lid.
- Installs easily with self-tapping stainless screws (not included).
- Arctic White.

Order No.	Mfg. No.	Outside	Cut-Out	List Price	
347825	(711HLAW)	10-1/8" x 14-1/8"	8" x 12"	\$110.69	G0-6147000
347838	(1020HLAW)	12-7/8" x 22-7/8"	11" x 21"	\$162.19	G0-7680100

Rabud Offshore Series Deck Hatches



- UV stabilized.
- Acetone resistant polypropylene.
- Lid opens a full 180°.
- Flush-mount design integrates into any vessel.
- Installs easily and securely.
- Secure closing lid will not open until you open it.
- No more components spilling out or hatches bouncing open during heavy conditions.
- Weather-tight gaskets keep everything dry.
- Arctic White.

Order No.	Mfg. No.	Outside	Cut-Out	List Price	
347804	(711OFFAW)	10-3/16" x 14"	8" x 11-7/8"	\$90.79	G0-3806000
347817	(1020OFFAW)	13-1/4" x 23-1/4"	11-3/8" x 21-1/8"	\$121.19	G0-0218000

- Electronics
- Trolling Motors
- Instruments
- Electrical
- Lighting
- Anchor & Dock
- Safety
- Steering, Controls
- Pumps
- Fuel System
- Seating & Pedestals
- Trailering
- Tops & Covers
- Perform.
- Propellers
- Engine & Care
- Cleaning & Care
- Paint & Paint Acc.
- Fun & Flotation
- Topside Acc.
- Cockpit & Deck
- Hardware, Fasteners
- Camouflage
- Misc.
- Comm.

T-H Marine Designer Series™ Glove Box - Non-Locking



- Non-locking glove box.
- Cam style locks hold lid securely.
- Positive lid seal for watertight fit.
- Stainless steel hinges.
- Hidden fasteners in frame.
- Easy to open.
- Outside dimensions: 7-1/2" x 14", cut out: 5-1/2" x 12".
- Polar White.

Order No.	Mfg. No. / Description	List Price	
642278	(GDS40714202D)	\$172.49	F0-4702100

T-H Marine Designer Series™ Tackle Centers



- Arranges and stores your tackle and valuables.
- Vacuum formed and divided ploy box.
- Securely attached to our best Designer Series hatch lid.
- Depth 10"
- Polar White.

Order No.	Mfg. No. / Description		List Price	
642340	(TDS-07142T2P) 7" x 14"	Includes 2 Trays	\$211.39	F0-7974100
642342	(TDS-11153T2P) 11" x 15"	Includes 3 Trays	\$250.19	F0-3157100

Attwood Standard Glove Box



- Plastic box and door are light-weight.
- Door opens and closes easily on a stainless steel hinge pin and locks with a marine locking latch.
- Door dimensions 13-3/4" L x 5-1/2" H.
- Inside diemnsnions 11-3/4" L x 4" H x 6-5/8" D.
- Installation hole size 12" L x 4-1/4" H.
- Black.

Order No.	Mfg. No. / Description	List Price	
237859	(2638-1)	\$40.29	F0-0282000

T-H Marine Lid and Hatch Support Springs



- Features a stainless steel spring that snaps straight to a support position when opened.
- The stainless steel spring then supports the lid, hatch or cover in the open position.
- When closing simply deflect the spring which allows spring to bend and rotate at the mounting positions.
- Molded black nylon ends for mounting.

Order No.	Mfg. No.	Diameter	Length	Supports Up to	List Price	
641060	(LS-2-DP)	7/16"	8-1/2"	10 lbs.	\$21.39	F0-7941000
642368	(HS-1-DP)	5/8"	12"	20 lbs.	\$34.59	F0-1242000

TACO Marine Hatch Tape



- Medium density closed cell foam with self adhesive for convenient installation.
- Made of durable and flexible rubber compound.
- Provides anti-rattle seal.
- Length 8'. Width 3/4".
- Black.

Order No.	Mfg. No. / Description	List Price	
751215	(V30-0744B8-2) 1/8" Height	\$16.79	F0-5711000
751227	(V30-0748B8-2) 1/4" Height	\$20.59	F0-1441000

Taylor Made Windshield Screw Cover Foam



- A PVC self adhering based foam has been used on many fine original equipment windshields.
- Dimensions: 5/8" x 1-1/4".
- 8' roll

Order No.	Mfg. No. / Description	List Price	
3456485	(1631)	\$62.99	H0-9773000

Lifesafe Vinyl Foam Hatch Tape



- Closed-cell foam tape seals out moisture, weather, sound and fumes.
- Extra thick 1/4" foam tape designed to help seal out the elements on hatch cover rims.
- Pressure sensitive adhesive gives excellent bond.
- Length 7' roll.

Order No.	Mfg. No. / Description	List Price	
228271	(RE3870) 1/8" x 3/4"	\$9.99	F0-9960000
228301	(RE3945) 1/4" x 3/4"	\$5.99	F0-9140000

Lifesafe Weatherseal Tape

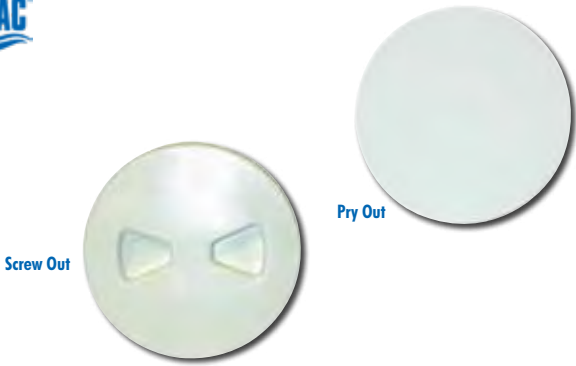


- Non-moisture absorbing.
- Closed-cell foam tape seals out moisture, weather, sound and fumes.
- PVC foam 1/8" thick tape is ideal for cushioning window and doors.
- Absorbs shock and eliminates vibration.
- Prevents metal to metal contact.
- Length 10' roll.
- 1/8" x 3/8".

Order No.	Mfg. No. / Description	List Price	
228299	(RE3943)	\$5.99	F0-9140000

- Electronics
- Trolling Motors
- Instruments
- Electrical
- Lighting
- Anchor & Dock
- Safety
- Steering, Controls
- Pumps
- Fuel System
- Seating & Pedestals
- Trailering
- Tops & Covers
- Perform.
- Propellers
- Engine & Care
- Cleaning & Care
- Paint & Paint Acc.
- Fun & Flotation
- Topside Acc.
- Cockpit & Deck
- Hardware, Fasteners
- Camouflage
- Misc.
- Comm.

Marpac Deck Plates with Textured Lids



- Watertight.
- O-ring seal concealed in the lid.
- Size shown is the plate hole I.D., add approximately 2" for flange O.D.

PRY OUT

Order No.	Description	List Price	
7-0633	Diameter 6" White	\$13.79	FO-5690000
7-0627	Diameter 8" Black	\$18.49	FO-4921000
7-0628	Diameter 8" White	\$26.59	FO-1681000

SCREW OUT

Order No.	Description	List Price	
7-0620	Diameter 4" Black	\$14.99	FO-9401000
7-0621	Diameter 4" White	\$14.09	FO-6890000
7-0623	Diameter 6" Black	\$13.79	FO-5690000
7-0624	Diameter 6" White	\$13.79	FO-5690000
7-0635	Diameter 8" Black	\$27.69	FO-8391000
7-0636	Diameter 8" White	\$27.79	FO-5491000

T-H Marine Sure-Seal Screw Out Deck Plate



- Watertight lid overlaps frame.
- Positive O-ring seal.
- No visible mounting fasteners.
- Total UV and chemical stability.
- Requires no tools for opening.

Order No.	Mfg. No.	Size	Outside	Cut-Out	List Price	
3420608	(DPS-4-1-DP)	4"	5-3/4"	4-1/2"	\$16.09	G1-6401000

Attwood Deck Plate



- High-impact ABS plastic is durable, rugged and weather-resistant.
- Allow addition of storage options to your canoe, kayak, or small boat.
- Screw out design.
- Diameter 6".
- Uses (6) #8 fasteners.
- White.

Order No.	Mfg. No. / Description	List Price	
1144091	(12792-1)	\$13.89	FO-2790000

LIMITED QUANTITIES

Marpac Screw Out Deck Plates - Best Value



- Watertight.
- O-ring seal concealed in the lid.
- Size shown is the plate hole I.D., add approximately 2" for flange O.D.

NEW PRODUCT

Order No.	Description	List Price	
7-4620	Diameter 4" Black	\$14.99	FO-9401000
7-4621	Diameter 4" White	\$14.99	FO-9401000
7-4623	Diameter 6" Black	\$14.99	FO-9401000
7-4624	Diameter 6" White	\$14.99	FO-9401000
7-4635	Diameter 8" Black	\$14.99	FO-9401000
7-4636	Diameter 8" White	\$14.99	FO-9401000

Boater Sports Deck Plates



- UV stabilized, high impact ABS material.
- Hidden screws.
- O-ring seal.
- White.

LIMITED QUANTITIES

Order No.	Mfg. No. / Description	List Price	
1-54724	(54724) Diameter 6"	\$13.29	HO-7970000
1-54727	(54727) Diameter 8"	\$22.09	HO-5231000

T-H Marine Low Profile Twist-Out Deck Plates



- Quick twist-out lid - fast access.
- Smooth low profile lid - overlaps frame.
- Hidden fasteners provide smooth look.
- O-ring for watertight design.
- Textured finish.

POLAR WHITE

Order No.	Mfg. No.	Size	Outside	Cut-Out	List Price	
2477400	(DPSLP-4-2-DP)	4"	5-5/8"	4-1/2"	\$14.69	FO-8201000
643115	(DPSLP-5-2-DP)	5"	6-7/8"	5-1/2"	\$20.89	FO-2641000
2477440	(DPSLP-6-2-DP)	6"	8"	6-1/4"	\$20.89	FO-2641000

BLACK

Order No.	Mfg. No.	Size	Outside	Cut-Out	List Price	
3420805	(DPSLP-5-1)	5"	6-7/8"	5-1/2"	\$22.99	G1-4941000

- Electronics
- Trolling Motors
- Instruments
- Electrical
- Lighting
- Anchor & Dock
- Safety
- Steering, Controls
- Pumps
- Fuel System
- Seating & Pedestals
- Trailering
- Tops & Covers
- Perform.
- Propellers
- Engine & Care
- Cleaning & Care
- Paint & Paint Acc.
- Fun & Flotation
- Topside Acc.
- Cockpit & Deck
- Hardware, Fasteners
- Camouflage
- Misc.
- Comm.

Rabud Twist-N-Lock Deck Plates



- UV stabilized.
- Acetone resistant polypropylene.
- Secure Twist-N-Lock cam with 1/4 turn opening lid provides weather resistant convenience with easy opening accessibility.
- Sturdy construction featuring U.V. resistant materials and replaceable gaskets.
- Arctic White.

Order No.	Mfg. No.	Inside	Outside	Cut-Out	List Price	
347737	(4LAW)	4"	5-5/8"	4-1/2"	\$14.99	GO-4001000
347740	(6LAW)	6"	7-3/4"	6-1/2"	\$17.69	GO-5811000
347751	(8LAW)	6"	9-3/4"	8-7/8"	\$35.09	GO-1532000

Rabud Pry-Out Deck Plates



- UV stabilized.
- Acetone resistant polypropylene.
- Provide easy access and weather-resistant design.
- Replaceable gasket and durable UV resistant construction provide years of maintenance-free service.
- Arctic White.

Order No.	Mfg. No.	Inside	Outside	Cut-Out	List Price	
347701	(4RAW)	4"	5-1/4"	4-7/16"	\$17.39	GO-5611000
347713	(6RAW)	6"	7-3/4"	6-1/2"	\$22.79	GO-7251000
347729	(8RAW)	6"	9-3/4"	8-9/16"	\$39.39	GO-9362000

Rabud Cover Plates



- Made from durable UV resistant polypropylene.

Order No.	Mfg. No. / Description		List Price	
347763	(4CPB) Diameter 4"	Black	\$8.29	GO-5550000
347765	(4CPW) Diameter 4"	White	\$8.29	GO-5550000
347771	(6CPB) Diameter 6"	Black	\$15.49	GO-8301000
347773	(6CPW) Diameter 6"	White	\$15.49	GO-8301000
347782	(8CPB) Diameter 8"	Black	\$18.19	GO-9121000
347784	(8CPW) Diameter 8"	White	\$18.09	GO-2121000

Perko Fig. 526 Regular Deck Plates



- Plain cast bronze.
- Deck plate key included.

Order No.	Mfg. No. / Description		List Price	
540179	(0526 003 PLB) 3" ID	5-3/8" OD	\$180.49	F0-4362100
540181	(0526 004 PLB) 4" ID	7-1/16" OD	\$287.69	F0-8310200
540206	(0526 006 PLB) 6" ID	9-3/8" OD	\$573.09	F0-6110400

T-H Marine Screw Down Deck Plates



- These plates are molded of super tough poly to be extra strong.
- They have an attractive matte finish and mount easily with countersunk screws.
- Inexpensive alternative to screw-out plates.

Order No.	Mfg. No. / Description		List Price	
6400274	(SDP-1-DP) Diameter 5-5/8"	Black	\$10.09	F0-6070000
6400276	(SDP-2-DP) Diameter 8"	Black	\$16.39	F0-7411000

T-H Marine Quick Release Cam Lock Deck Plates



- Cam hatch holds secure.
- Hidden fasteners in ring.
- Textured finish.
- O-ring seal in flange for watertight fit.
- Gripper in lid prevents rotation.
- Polar White.

Order No.	Mfg. No.	Outside	Inside	Cut-Out	List Price	
641392	(DPCAM-6-2-DP) 8"	8"	5-1/8"	6-1/4"	\$34.39	F0-7042000
641393	(DPCAM-8-2-DP) 10"	10"	7-1/8"	8-1/4"	\$55.79	F0-5093000

T-H Marine Loc-R-Bar™ Boat Security System



- Adjustable stainless steel security bars, solid aluminum mounting brackets and the innovative Loc - Alarm completes the system.
- Secures all deck lockers by extending across the entire deck surface, gunwale to gunwale.
- A fully self-contained alarm system for your boat.
- No wiring, sensors or complicated installation required.
- The Complete Alarm System includes: An alarm padlock and mounting brackets.

Order No.	Mfg. No. / Description		List Price	
640974	(LB-LCK110DBA) Alarm Lock Only		\$65.49	F0-4854000
640976	(LB-LRBS113S) Complete Alarm System		\$487.39	F0-7114300

Electronics

Trolling Motors

Instruments

Electrical

Lighting

Anchor & Dock

Safety

Steering, Controls

Pumps

Fuel System

Seating & Pedestals

Trailer

Tops & Covers

Perform.

Propellers

Engine & Care

Cleaning & Care

Paint & Paint Acc.

Fun & Flotation

Topside Acc.

Cockpit & Deck

Hardware, Fasteners

Camouflage

Misc.

Comm.

TACO Marine KingStarboard® Polymer Sheets



- When it comes to creating new accessories or replacing wood, laminates or plastic parts on a boat, builders count on our KingStarboard Marine Starboard Polymer Sheets.
- These Polymer Sheets are environmentally stabilized to withstand the harshest marine conditions.
- They will not warp, rot or delaminate when exposed to humidity or water.
- Using standard woodworking tools, easily fabricate the Polymer Sheets to match your needs.
- High density, UV-stabilized polyethylene marine starboard.
- Individually wrapped.

WHITE

Order No.	Mfg. No. / Description	Thickness	List Price	
840515	(P10-2506WHA12-1) 12" L x 6" W	1/4"	\$17.39	F0-7121000
840520	(P10-2512WHA12-1) 12" L x 12" W	1/4"	\$25.29	F0-0771000
840505	(P10-2512WHA27-1) 12" L x 27" W	1/4"	\$36.59	F0-1652000
840002	(P10-5012WHA27-1) 12" L x 27" W	1/2"	\$65.69	F0-8954000
840208	(P10-7512WHA27-1) 12" L x 27" W	3/4"	\$96.69	F0-8676000
840510	(P10-2524WHA27-1) 24" L x 27" W	1/4"	\$67.39	F0-7174000
840005	(P10-5024WHA27-1) 24" L x 27" W	1/2"	\$124.09	F0-6868000
840010	(P10-5024WHA54-1) 24" L x 54" W	1/2"	\$235.19	F0-3646100

BLACK

Order No.	Mfg. No. / Description	Thickness	List Price	
840303	(P10-5012BLK27-1) 12" L x 27" W	1/2"	\$65.69	F0-8954000
840315	(P105024BLK27) 24" L x 27" W	1/2"	\$124.09	F0-6868000

SEAFOAM

Order No.	Mfg. No. / Description	Thickness	List Price	
840307	(P10-5012SFM27-1) 12" L x 27" W	1/2"	\$65.69	F0-8954000

TACO Marine KingStarboard® Anti Skid - Marine Starboard



- High density, UV-stabilized polyethylene.
- Special high friction surface in a diamond pattern finish prevents slipping and promotes drainage when wet.
- Saltwater resistant.
- Developed to withstand the harshest marine conditions.
- Passes ASTM D2047 slip resistant testing.
- Resists most stains and does not change color.
- Does not rot or delaminate.
- Does not need refinishing.
- Chemical resistant.
- Cleans easily with marine-grade soaps or cleaners using fresh water.
- Length 12", width 27".
- White.

Order No.	Mfg. No.	Thickness	List Price	
840525	(P14-5012WHA27-1)	1/2"	\$70.89	F0-2694000
840530	(P14-7512WHA27-1)	3/4"	\$104.19	F0-3927000

Coosa Composite Panels



- A high density, closed-cell polyurethane foam reinforced with woven roving and continuous strand fiberglass.
- Dimensions: 4' x 8'.

BLUEWATER 26 - DENSITY OF 26 POUNDS PER CUBIC FOOT

- Coosa's strongest and stiffest panel. Ultimate high strength-to-weight ratio. Typically used as a structural component. 30% or more lighter than plywood.

Order No.	Mfg. No. / Description	Thickness	List Price	
412142	(PBW0050T)	1/2"	\$429.29	F0-0500300
412154	(PBW0625T)	5/8"	\$437.79	F0-5460300
412166	(PBW0075T)	3/4"	\$459.69	F0-8712300
412178	(PBW1000T)	1"	\$487.89	G0-9862300
412196	(BW26 1-1/2)	1-1/2"	\$824.89	F0-2477500

BLUEWATER 20 - DENSITY OF 20 POUNDS PER CUBIC FOOT

- Coosa's economical alternative. Typically used as a semi-structural component. 45% or more lighter than plywood.

Order No.	Mfg. No. / Description	Thickness	List Price	
412180	(B20W0025T)	1/4"	\$269.49	G0-6508100
412192	(B20W0050T)	1/2"	\$314.39	F0-7002200

King Starboard® Polymer Sheet



- Made of the finest polymers available, using King's proprietary K-Stran process for superior flatness and consistency.
- Environmentally stabilized for harsh sun and tough marine environments.
- Will not rot, swell, splinter or delaminate when exposed to humidity or water.
- Precise tolerances ensure consistent color, thickness and density, even for special thickness gauges and custom order colors.
- Easy to fabricate with standard woodworking tools and requires little or no finishing.
- Durable matte-textured surface on both sides.
- Easy to clean and never needs refinishing.
- Edges finish cleanly and easily.
- Forms easily for smooth curves.
- Shipped with a protective masking on one side.
- White.

Order No.	Mfg. No. / Description	Thickness	List Price	
242400	(1/4WW) Dimensions: 1/4" x 54" x 48"		\$110.89	F0-2677000
242410	(3/8WW) Dimensions: 3/8" x 54" x 48"		\$161.49	F0-4031100
242420	(1/2WW) Dimensions: 1/2" x 54" x 48"		\$214.59	F0-1205100
242430	(3/4WW) Dimensions: 3/4" x 54" x 48"		\$399.99	F0-9997200
242440	(1/4WW-96) Dimensions: 1/4" x 54" x 96"		\$221.69	F0-8155100
242450	(3/8WW-96) Dimensions: 3/8" x 54" x 96"		\$322.99	F0-9062200
242460	(1/2WW-96) Dimensions: 1/2" x 54" x 96"		\$797.99	F0-9585500

SPECIAL HANDLING MAY APPLY



- Electronics
- Trolling Motors
- Instruments
- Electrical
- Lighting
- Anchor & Dock
- Safety
- Steering, Controls
- Pumps
- Fuel System
- Seating & Pedestals
- Trailing
- Tops & Covers
- Perform.
- Propellers
- Engine & Care
- Cleaning & Care
- Paint & Paint Acc.
- Fun & Flotation
- Topside Acc.
- Cockpit & Deck
- Hardware, Fasteners
- Camouflage
- Misc.
- Comm.