

Catálogo de accesorios Náuticos



2025

El Navegante

www.repuestoselnavegante.com



Minn Kota Trolling Motor Reference Guide

DMI #	Part #	Model	Mount Feature	Control	Thrust	Volt	Speeds	Shaft Length	Features
Ultrex - Dual Spectrum CHRIP									
4756121	1368890	-	Lift-Assist	Foot Pedal and Remote	80#	24	Variable	45"	-
4756123	1368891	-	Lift-Assist	Foot Pedal and Remote	80#	24	Variable	52"	-
4756125	1368895	-	Lift-Assist	Foot Pedal and Remote	112#	36	Variable	45"	-
4756127	1368896	-	Lift-Assist	Foot Pedal and Remote	112#	36	Variable	52"	-
4756129	1368894	-	Lift-Assist	Foot Pedal and Remote	112#	36	Variable	60"	-
Ultrex - Mega Down Imaging									
4756111	1368892	-	Lift-Assist	Foot Pedal and Remote	80#	24	Variable	45"	Side/Down
4756113	1368893	-	Lift-Assist	Foot Pedal and Remote	80#	24	Variable	52"	Side/Down
4756115	1368893	-	Lift-Assist	Foot Pedal and Remote	112#	36	Variable	45"	Side/Down
4756117	1368898	-	Lift-Assist	Foot Pedal and Remote	112#	36	Variable	52"	Side/Down
4756119	1368899	-	Lift-Assist	Foot Pedal and Remote	112#	36	Variable	60"	Side/Down
Ultrex - Quest Series - Dual Spectrum CHRIP									
4756137	1368900	-	Lift-Assist	Foot Pedal and Remote	90# (24v), 115# (36v)	Variable	Variable	45"	Heel-Toe/Programmable
4756139	1368901	-	Lift-Assist	Foot Pedal and Remote	90# (24v), 115# (36v)	Variable	Variable	52"	Heel-Toe/Programmable
4756141	1368902	-	Lift-Assist	Foot Pedal and Remote	90# (24v), 115# (36v)	Variable	Variable	60"	Heel-Toe/Programmable
Ultrex - Quest Series - Mega Down/Side Imaging									
4756131	1368920	-	Lift-Assist	Foot Pedal and Remote	90# (24v), 115# (36v)	Variable	Variable	45"	Heel-Toe/Programmable
4756133	1368921	-	Lift-Assist	Foot Pedal and Remote	90# (24v), 115# (36v)	Variable	Variable	52"	Heel-Toe/Programmable
4756135	1368922	-	Lift-Assist	Foot Pedal and Remote	90# (24v), 115# (36v)	Variable	Variable	60"	Heel-Toe/Programmable
Ulterra - Dual Spectrum CHRIP									
4756187	1358975	-	Auto Stow/Deploy	Foot Pedal and Remote	80#	24	Variable	45"	-
4756189	1358976	-	Auto Stow/Deploy	Foot Pedal and Remote	80#	24	Variable	60"	-
4756191	1358945	-	Auto Stow/Deploy	Foot Pedal and Remote	112#	36	Variable	60"	-
Ulterra - Mega Down Imaging									
4756181	1358970	-	Auto Stow/Deploy	Foot Pedal and Remote	80#	24	Variable	45"	Side/Down
4756183	1358971	-	Auto Stow/Deploy	Foot Pedal and Remote	80#	24	Variable	60"	Side/Down
4756185	1358940	-	Auto Stow/Deploy	Foot Pedal and Remote	112#	36	Variable	60"	Side/Down
Ulterra - Quest Series - Dual Spectrum CHRIP									
4756193	1358540	-	Auto Stow/Deploy	Foot Pedal and Remote	90# (24v), 115# (36v)	Variable	Variable	45"	Real-Time Battery Mon.
4756195	1358541	-	Auto Stow/Deploy	Foot Pedal and Remote	90# (24v), 115# (36v)	Variable	Variable	60"	Real-Time Battery Mon.
4756197	1358542	-	Auto Stow/Deploy	Foot Pedal and Remote	90# (24v), 115# (36v)	Variable	Variable	72"	Real-Time Battery Mon.
Ulterra - Quest Series - Mega Down/Side Imaging									
4756199	1358501	-	Auto Stow/Deploy	Foot Pedal and Remote	90# (24v), 115# (36v)	Variable	Variable	45"	Real-Time Battery Mon.
4756201	1358502	-	Auto Stow/Deploy	Foot Pedal and Remote	90# (24v), 115# (36v)	Variable	Variable	60"	Real-Time Battery Mon.
4756203	1358503	-	Auto Stow/Deploy	Foot Pedal and Remote	90# (24v), 115# (36v)	Variable	Variable	72"	Real-Time Battery Mon.



Electronics

Trolling Motors

Instruments

Electrical

Lighting

Anchor & Dock

Safety

Steering, Controls

Pumps

Fuel System

Seating & Pedestals

Trailer

Tops & Covers

Perform.

Propellers

Engine & Care

Cleaning & Care

Paint & Paint Acc.

Fun & Flotation

Topside Acc.

Cockpit & Deck

Hardware, Fasteners

Camouflage

Misc.

Comm.

Minn Kota Trolling Motor Reference Guide

DMI #	Part #	Model	Mount Feature	Control	Thrust	Volt	Speeds	Shaft Length	Features
Terrova									
4756165	1358350	-	Stow/Deploy Lever	Foot Pedal and Remote	55#	12	Variable	54"	-
4756167	1358380	-	Stow/Deploy Lever	Foot Pedal and Remote	80#	24	Variable	60"	-
Terrova - Dual Spectrum CHRIP									
4756153	1358355	-	Stow/Deploy Lever	Foot Pedal and Remote	55#	12	Variable	45"	-
4756143	1358356	-	Stow/Deploy Lever	Foot Pedal and Remote	55#	12	Variable	54"	-
4756155	1358381	-	Stow/Deploy Lever	Foot Pedal and Remote	80#	24	Variable	45"	-
4756157	1358382	-	Stow/Deploy Lever	Foot Pedal and Remote	80#	24	Variable	60"	-
4756159	1358383	-	Stow/Deploy Lever	Foot Pedal and Remote	80#	24	Variable	72"	-
4756161	1358310	-	Stow/Deploy Lever	Foot Pedal and Remote	112#	36	Variable	60"	-
4756163	1358311	-	Stow/Deploy Lever	Foot Pedal and Remote	112#	36	Variable	72"	-
Terrova - Mega Down Imaging									
4756145	1358385	-	Stow/Deploy Lever	Foot Pedal and Remote	80#	24	Variable	45"	Side/Down
4756147	1358386	-	Stow/Deploy Lever	Foot Pedal and Remote	80#	24	Variable	60"	Side/Down
4756149	1358315	-	Stow/Deploy Lever	Foot Pedal and Remote	112#	36	Variable	60"	Side/Down
4756151	1358316	-	Stow/Deploy Lever	Foot Pedal and Remote	112#	36	Variable	72"	Side/Down
Terrova - Quest Series - Dual Spectrum CHRIP									
4756169	1358200	-	Stow/Deploy Lever	Foot Pedal and Remote	90# (24v), 115# (36v)		Variable	45"	Real-Time Battery Mon.
4756173	1358201	-	Stow/Deploy Lever	Foot Pedal and Remote	90# (24v), 115# (36v)		Variable	60"	Real-Time Battery Mon.
4756177	1358202	-	Stow/Deploy Lever	Foot Pedal and Remote	90# (24v), 115# (36v)		Variable	72"	Real-Time Battery Mon.
Terrova - Quest Series - Mega Down/Side Imaging									
4756171	1358210	-	Stow/Deploy Lever	Foot Pedal and Remote	90# (24v), 115# (36v)		Variable	45"	Real-Time Battery Mon.
4756175	1358211	-	Stow/Deploy Lever	Foot Pedal and Remote	90# (24v), 115# (36v)		Variable	60"	Real-Time Battery Mon.
4756179	1358212	-	Stow/Deploy Lever	Foot Pedal and Remote	90# (24v), 115# (36v)		Variable	72"	Real-Time Battery Mon.
Fortrex Series - Bow Mount Motors									
475594	1368667	Fortrex 80	Lift-Assist/Bowguard	Heel-Toe/Cable-Steer Foot Pedal	80#	24	Variable	45"	-
475595	1368668	Fortrex 80	Lift-Assist/Bowguard	Heel-Toe/Cable-Steer Foot Pedal	80#	24	Variable	52"	-
475596	1368677	Fortrex 112	Lift-Assist/Bowguard	Heel-Toe/Cable-Steer Foot Pedal	112#	36	Variable	45"	-
PowerDrive Series - Bow Mount Motors									
4756041	1358441	PowerDrive 45	Deploy-Assist Lever	Side-to-Side/Electric Foot Pedal	45#	12	Variable	48"	Power Prop
4756043	1358453	PowerDrive 55	Deploy-Assist Lever	Side-to-Side/Electric Foot Pedal	55#	12	Variable	54"	Power Prop
4756051	1358473	PowerDrive 70	Deploy-Assist Lever	Side-to-Side/Electric Foot Pedal	70#	24	Variable	60"	Power Prop
PowerDrive Series - Dual Spectrum CHRIP									
4756047	1358450	PowerDrive 55	Deploy-Assist Lever	Side-to-Side/Electric Foot Pedal	55#	12	Variable	54"	-
4756053	1358470	PowerDrive 70	Deploy-Assist Lever	Side-to-Side/Electric Foot Pedal	70#	24	Variable	60"	-
PowerDrive Series - One-Boat Network Compatible									
4756033	1358451	-	Deploy-Assist Lever	Micro Remote	55#	12	Variable	54"	One-Boat Network Enable
4756037	1358471	-	Deploy-Assist Lever	Micro Remote	70#	24	Variable	54"	One-Boat Network Enable
PowerDrive Series - One-Boat Network Compatible and Dual Spectrum CHRIP									
4756035	1358452	-	Deploy-Assist Lever	Micro Remote	55#	12	Variable	54"	One-Boat Network Enable
4756039	1358472	-	Deploy-Assist Lever	Micro Remote	70#	24	Variable	60"	One-Boat Network Enable
Maxxum with Weedless Wedge 2 Propeller (Bow Mount Motors)									
475410	1368561	Maxxum 70	Bowguard	Heel-Toe/Cable Foot Pedal	70#	24	Variable	42"	Digital Maximizer
475424	1368562	Maxxum 70	Bowguard	Heel-Toe/Cable Foot Pedal	70#	24	Variable	52"	Digital Maximizer
475397	1368560	Maxxum 70/SC	Bowguard	Heel-Toe/Cable Foot Pedal	70#	24	5-Speed	42"	-



Minn Kota Trolling Motor Reference Guide

DMI #	Part #	Model	Mount Feature	Control	Thrust	Volt	Speeds	Shaft Length	Features
Edge Series - Bow Mount Motors									
475212	1355946	Edge 45	Latch & Door	Heel-Toe/Cable Foot Pedal	45#	12	5-Speed	36"	Power Prop
475214	1366947	Edge 45	Latch & Door	Heel-Toe/Cable Foot Pedal	45#	12	5-Speed	45"	Power Prop
475290	1355956	Edge 55	Latch & Door	Heel-Toe/Cable Foot Pedal	55#	12	5-Speed	45"	Weedless Wedge 2
475292	1355957	Edge 55	Latch & Door	Heel-Toe/Cable Foot Pedal	55#	12	5-Speed	52"	Weedless Wedge 2
475296	1355970	Edge 70	Latch & Door	Heel-Toe/Cable Foot Pedal	70#	24	5-Speed	45"	Weedless Wedge 2
475297	1355971	Edge 70	Latch & Door	Heel-Toe/Cable Foot Pedal	70#	24	5-Speed	52"	Weedless Wedge 2
475218	1355935	Edge 45/H	Latch & Door	Tilt Twist Tiller	45#	12	5 Fwd/3 Rev	45"	Power Prop
475220	1355963	Edge 55/H	Latch & Door	Tilt Twist Tiller	55#	12	5 Fwd/3 Rev	52"	Weedless Wedge 2
Traxxis Series - Transom Mount Motors									
475183	1368715M	Traxxis 55	One-Hand Stow	Tilt/Extend Tiller	55#	12	Variable	36"	Power Prop
475185	1368716M	Traxxis 55	One-Hand Stow	Tilt/Extend Tiller	55#	12	Variable	42"	Power Prop
475187	1368730M	Traxxis 80	One-Hand Stow	Tilt/Extend Tiller	80#	24	Variable	42"	Power Prop
Endura Max Series - Transom Mount Motors									
474877	1352145M	Endura Max 45	Lever Lock Bracket	Telescoping Tiller	45#	12	Variable	36"	Power Prop
474879	1352155M	Endura Max 55	Lever Lock Bracket	Telescoping Tiller	55#	12	Variable	36"	Power Prop
474881	1352156M	Endura Max 55	Lever Lock Bracket	Telescoping Tiller	55#	12	Variable	42"	Power Prop
Endura Series - Transom Mount Motors									
474831	1352270M	Endura 30	Lever Lock Bracket	Telescoping Tiller	30#	12	Variable	30"	Power Prop
474833	1352272M	Endura 40	Lever Lock Bracket	Telescoping Tiller	40#	12	Variable	36"	Power Prop
474836	1352274M	Endura 50	Lever Lock Bracket	Telescoping Tiller	50#	12	Variable	36"	Power Prop
474837	1352278	Endura 50	Lever Lock Bracket	Telescoping Tiller	50#	12	Variable	42"	Power Prop
PowerDrive Series - Foot Control - Bow Mount Motors									
4756205	1358455	PowerDrive 55	Deploy-Assist Lever	PowerDrive Foot Pedal	55#	12	Variable	48"	Power Prop
4756207	1358475	PowerDrive 70	Deploy-Assist Lever	PowerDrive Foot Pedal	70#	24	Variable	48"	Power Prop
Pontoon Series - Hand Control - Bow Mount Motors									
474743	1355964	Pontoon 55/H	Pontoon Latch & Door	Tilt Twist Tiller	55#	12	5 Fwd/3 Rev	52"	Weedless Wedge 2
474746	1355979	Pontoon 70/H	Pontoon Latch & Door	Tilt Twist Tiller	70#	24	5 Fwd/3 Rev	52"	Weedless Wedge 2
Riptide Instinct Series - Quest Series									
4755984	1358562	-	Auto Stow/Deploy	Foot Pedal and Remote	90# (24v), 115# (36v)		Variable	87"	White Model
4755985	1358582	-	Auto Stow/Deploy	Foot Pedal and Remote	90# (24v), 115# (36v)		Variable	87"	Black Model
4755987	1358563	-	Auto Stow/Deploy	Foot Pedal and Remote	90# (24v), 115# (36v)		Variable	100"	White Model
4755989	1358583	-	Auto Stow/Deploy	Foot Pedal and Remote	90# (24v), 115# (36v)		Variable	100"	Black Model
Riptide Terra Series									
4755930	1363770	-	Stow/Deploy Lever	Foot Pedal and Remote	55#	12	Variable	54"	Weedless Wedge 2
4755931	1363771	-	Stow/Deploy Lever	Foot Pedal and Remote	55#	12	Variable	60"	Weedless Wedge 2
4755943	1363785	-	Stow/Deploy Lever	Foot Pedal and Remote	80#	24	Variable	54"	Weedless Wedge 2
4755946	1363786	-	Stow/Deploy Lever	Foot Pedal and Remote	80#	24	Variable	60"	Weedless Wedge 2
4755948	1363787	-	Stow/Deploy Lever	Foot Pedal and Remote	80#	24	Variable	72"	Weedless Wedge 2
4755950	1363790	-	Stow/Deploy Lever	Foot Pedal and Remote	112#	36	Variable	60"	Weedless Wedge 2
4755952	1363791	-	Stow/Deploy Lever	Foot Pedal and Remote	112#	36	Variable	72"	Weedless Wedge 2
4755949	1363792	-	Stow/Deploy Lever	Foot Pedal and Remote	112#	36	Variable	87"	Weedless Wedge 2
Riptide Terra - Quest Series - Dual Spectrum CHRIP									
4755954	1363900	-	Stow/Deploy Lever	Foot Pedal and Remote	90# (24v), 115# (36v)		Variable	60"	White Model
4755909	1363910	-	Stow/Deploy Lever	Foot Pedal and Remote	90# (24v), 115# (36v)		Variable	60"	Black Model
4755955	1363901	-	Stow/Deploy Lever	Foot Pedal and Remote	90# (24v), 115# (36v)		Variable	72"	White Model
4755944	1363911	-	Stow/Deploy Lever	Foot Pedal and Remote	90# (24v), 115# (36v)		Variable	72"	Black Model
4755956	1363902	-	Stow/Deploy Lever	Foot Pedal and Remote	90# (24v), 115# (36v)		Variable	87"	White Model
4755914	1363912	-	Stow/Deploy Lever	Foot Pedal and Remote	90# (24v), 115# (36v)		Variable	87"	Black Model
4755958	1363903	-	Stow/Deploy Lever	Foot Pedal and Remote	90# (24v), 115# (36v)		Variable	100"	White Model
4755911	1363913	-	Stow/Deploy Lever	Foot Pedal and Remote	90# (24v), 115# (36v)		Variable	100"	Black Model

- Electronics
- Trolling Motors
- Instruments
- Electrical
- Lighting
- Anchor & Dock
- Safety
- Steering, Controls
- Pumps
- Fuel System
- Seating & Pedestals
- Trailering
- Tops & Covers
- Perform.
- Propellers
- Engine & Care
- Cleaning & Care
- Paint & Paint Acc.
- Fun & Flotation
- Topside Acc.
- Cockpit & Deck
- Hardware, Fasteners
- Camouflage
- Misc.
- Comm.

Minn Kota Trolling Motor Reference Guide

DMI #	Part #	Model	Mount Feature	Control	Thrust	Volt	Speeds	Shaft Length	Features
Riptide PowerDrive Series with Wireless Remote - Bow Mount Motors									
4755913	1363576	-	Deploy-Assist Lever	Wireless Remote	55#	12	Variable	54"	Power Prop
4755916	1363586	-	Deploy-Assist Lever	Wireless Remote	70#	24	Variable	54"	Power Prop
Riptide PowerDrive Series with Micro Remote - Bow Mount Motors									
4755918	1363575	-	Deploy-Assist Lever	Micro Remote	55#	12	Variable	54"	Power Prop
4755928	1363585	-	Deploy-Assist Lever	Micro Remote	70#	24	Variable	54"	Power Prop
Riptide Fortrex Series - Bow Mount Motors									
475109	1363640	Riptide Fortrex 80	Lift-Assist/Bowguard	Tilt/Extend Tiller	80#	24	Variable	52"	Weedless Wedge 2
475110	1363641	Riptide Fortrex 80	Lift-Assist/Bowguard	Tilt/Extend Tiller	80#	24	Variable	62"	Weedless Wedge 2
475116	1363660	Riptide Fortrex 112	Lift-Assist/Bowguard	Tilt/Extend Tiller	112#	36	Variable	62"	Weedless Wedge 2
Riptide Maxxum Series with Weedless Wedge 2 Propeller - Bow Mount Motors									
475041	1363420	55/L&D/SC/H	Latch & Door Bracket	Tilt/Extend Tiller	55#	12	5 Fwd/3 Rev	42"	-
475043	1363421	55/L&D/SC/H	Latch & Door Bracket	Tilt/Extend Tiller	55#	12	5 Fwd/3 Rev	52"	-
475071	1363425	70/L&D/SC/H	Latch & Door Bracket	Tilt/Extend Tiller	70#	24	5 Fwd/3 Rev	52"	-
475118	1363447	80/L&D/H	Latch & Door Bracket	Tilt/Extend Tiller	80#	24	Variable	52"	Digital Maximizer
475119	1363445	80/BG/H	Bowguard	Tilt/Extend Tiller	80#	24	Variable	52"	Digital Maximizer
475120	1363446	80/BG/H	Bowguard	Tilt/Extend Tiller	80#	24	Variable	62"	Digital Maximizer
Riptide Transom Series with Weedless Wedge 2 Propeller - Transom Mount Motors									
475112	1363845	Riptide Transom 45	Lever Lock Bracket	Tilt/Extend Tiller	45#	12	Variable	36"	Digital Maximizer
475117	1363856	Riptide Transom 55	Lever Lock Bracket	Tilt/Extend Tiller	55#	12	Variable	42"	Digital Maximizer
475108	1363831	Riptide Transom 80	Lever Lock Bracket	Tilt/Extend Tiller	80#	24	Variable	42"	Digital Maximizer
Riptide Transom Series with Power Prop - Transom Mount Motors									
475114	1363844	Riptide Transom 45/SC	Lever Lock Bracket	Telescoping Tiller	45#	12	5 Fwd/3 Rev	36"	-
475115	1363854	Riptide Transom 55/SC	Lever Lock Bracket	Telescoping Tiller	55#	12	5 Fwd/3 Rev	42"	-

- Electronics
- Trolling Motors
- Instruments
- Electrical
- Lighting
- Anchor & Dock
- Safety
- Steering, Controls
- Pumps
- Fuel System
- Seating & Pedestals
- Trailing
- Tops & Covers
- Perform.
- Propellers
- Engine & Care
- Cleaning & Care
- Paint & Paint Acc.
- Fun & Flotation
- Topside Acc.
- Cockpit & Deck
- Hardware, Fasteners
- Camouflage
- Misc.
- Comm.



Johnson Outdoors Marine Electronics, Inc.
555 Main Street
Racine, WI 53403

2025 RIGGING ALLOWANCE PROGRAM

Dear Valued Dealer,

Johnson Outdoors has temporarily moved the submission form off-line for the Minn Kota and Humminbird rigging programs.

- The temporary off-line submission form is attached. When you have completed this form, please save it as an Excel file and e-mail a copy to: (Rigging.Database@johnsonoutdoors.com). Please make sure to include the word "Rigging" in the subject line of the e-mail.
- Please note that you will need your dealer account "address book" number. New dealers must contact Johnson Outdoors in order to receive their account number prior to using the off-line rigging submission form.
- If you have any questions or need further assistance, please contact Ron Bailey via e-mail (rbailey@johnsonoutdoors.com).

Complete information must be received to qualify for the below 2025 model year rigging allowance:

Minn Kota Item	Minn Kota Series or Model	Allowance
All freshwater models	ULTREX 80/112	\$50
All freshwater models	ULTREX QUEST	\$100
All freshwater/saltwater models	TERROVA 55/80/112	\$50
All freshwater/saltwater models	TERROVA QUEST	\$100

Minn Kota Item	Minn Kota Series or Model	Allowance
All freshwater models	ULTERRA 80/112	\$50
All freshwater models	ULTERRA QUEST	\$100
All saltwater models	INSTINCT QUEST	\$100

Humminbird Item Number	Humminbird Series or Model	Allowance
411640-1CHO	HELIX 7 CHIRP MDI GPS G4N CHO	\$30
411640-1	HELIX 7 CHIRP MDI GPS G4N	\$40
411650-1	HELIX 7 CHIRP MSI GPS G4N	\$50
412000-1CHO	XPLORE 9 CHO	\$50
412000-1	XPLORE 9 CMSI+	\$50
412010-1CHO	XPLORE 10 CHO	\$60
412010-1	XPLORE 10 CMSI+	\$60
412020-1CHO	XPLORE 12 CHO	\$75
412020-1	XPLORE 12 CMSI+	\$75
411470-1CHO	APEX 13 MSI+ CHARTPLOTTER CHO	\$100
411470-1	APEX 13 MSI+ CHARTPLOTTER	\$100
411500-1CHO	APEX 16 MSI+ CHARTPLOTTER CHO	\$100
411500-1	APEX 16 MSI+ CHARTPLOTTER	\$100
411240-1CHO	APEX 19 MSI+ CHARTPLOTTER CHO	\$100
411240-1	APEX 19 MSI+ CHARTPLOTTER	\$100
750013-1	HB 2124 CHIRP RADAR	\$100
710310-1	MEGA LIVE 2	\$150
740210-1	MEGA LIVE TARGETLOCK - ULTREX 45-52" ADAPTER KIT	\$150
740222-1	MEGA LIVE TARGETLOCK - ULTREX 60" ADAPTER KIT	\$150
411850-1	AS ETH 5PGL	\$25

Humminbird Item Number	Humminbird Series or Model	Allowance
411640-1CHO	HELIX 7 CHIRP MDI GPS G4N CHO	\$30
411640-1	HELIX 7 CHIRP MDI GPS G4N	\$40
411650-1	HELIX 7 CHIRP MSI GPS G4N	\$50
412000-1CHO	XPLORE 9 CHO	\$50
412000-1	XPLORE 9 CMSI+	\$50
412010-1CHO	XPLORE 10 CHO	\$60
412010-1	XPLORE 10 CMSI+	\$60
412020-1CHO	XPLORE 12 CHO	\$75
412020-1	XPLORE 12 CMSI+	\$75
411470-1CHO	APEX 13 MSI+ CHARTPLOTTER CHO	\$100
411470-1	APEX 13 MSI+ CHARTPLOTTER	\$100
411500-1CHO	APEX 16 MSI+ CHARTPLOTTER CHO	\$100
411500-1	APEX 16 MSI+ CHARTPLOTTER	\$100
411240-1CHO	APEX 19 MSI+ CHARTPLOTTER CHO	\$100
411240-1	APEX 19 MSI+ CHARTPLOTTER	\$100
750013-1	HB 2124 CHIRP RADAR	\$100
710310-1	MEGA LIVE 2	\$150
740210-1	MEGA LIVE TARGETLOCK - ULTREX 45-52" ADAPTER KIT	\$150
740222-1	MEGA LIVE TARGETLOCK - ULTREX 60" ADAPTER KIT	\$150
411850-1	AS ETH 5PGL	\$25

Program dates are September 30, 2024 thru October 3, 2025.

Discontinued, OEM (Boat Builder) and Reconditioned product does not apply.

Minn Kota and Humminbird reserve the right to request proof of installation. Please allow 8-10 weeks processing time to receive your payment.

Guidelines are subject to change • Revision October 5, 2024



Minn Kota Ultrex Series Trolling Motors



- Electronics
- Trolling Motors**
- Instruments
- Electrical
- Lighting
- Anchor & Dock
- Safety
- Steering, Controls
- Pumps
- Fuel System
- Seating & Pedestals
- Trailing
- Tops & Covers
- Perform.
- Propellers
- Engine & Care
- Cleaning & Care
- Paint & Paint Acc.
- Fun & Flotation
- Topside Acc.
- Cockpit & Deck
- Hardware, Fasteners
- Camouflage
- Misc.
- Comm.



MAP PRICE

MAP PRICE

MEGA DOWN IMAGING

- **Built-In MEGA Down Imaging:** With a transducer built right into the motor, you get crystal clear Humminbird MEGA Down Imaging and a clean protected look.

Order No.	Mfg. No. / Description	List Price
4756111	(1368892) 45" Shaft 80# Thrust 24 volt	\$3,099.99 Z0-1615520
4756113	(1368893) 52" Shaft 80# Thrust 24 volt	\$3,199.99 Z0-2933620
4756115	(1368897) 45" Shaft 112# Thrust 36 volt	\$3,299.99 Z0-3261720
4756117	(1368898) 52" Shaft 112# Thrust 36 volt	\$3,399.99 Z0-4589720
4756119	(1368899) 60" Shaft 112# Thrust 36 volt	\$3,499.99 Z0-5808820

QUEST SERIES - MEGA DOWN/SIDE IMAGING

- **QUEST Series:** These 24/36V dual-voltage brushless motors have been completely re-imagined from the ground up with updates to mounts, propellers, lift assist systems, drive motors and software - taking the world's greatest trolling motors and redesigning them to outperform everything else on the water for years to come.
- **Drift mode** automatically engages speed and course control simultaneously, meaning anglers no longer need to depend on drift socks, kicker motors, or manual operation to control speed over water - even in the heaviest wind and current.
- **Heel-Toe/Programmable Foot Pedal:** It's the only foot pedal with Power Steering for all-day comfort and instant responsiveness - plus a user-programmable button to keep the most used features a tap away, including: mark a waypoint, engage AutoPilot, or deploy or retract Minn Kota shallow water anchors.
- **Real-time Battery Monitoring:** Check battery power levels while the motor is in use, real-time "time until empty" display monitor, with a notification when battery power is reduced to 20% to prompt users to enter "Eco-mode" which can reduce current draw to extend battery life.
- **Built-In MEGA Side Imaging:** With a transducer built right into the motor, you get crystal clear Humminbird MEGA Side Imaging and a clean protected look.

Order No.	Mfg. No. / Description	List Price
4756131	(1368920) 45" Shaft 90# (24v) / 115# (36v)	\$3,999.99 Z0-0429230
4756133	(1368921) 52" Shaft 90# (24v) / 115# (36v)	\$4,099.99 Z0-1747330
4756135	(1368922) 60" Shaft 90# (24v) / 115# (36v)	\$4,199.99 Z0-2075430

- **Freshwater.**
- **Bow mount.**
- **Power Steering:** The most comfortable, responsive steering available. Ultrex's foot pedal is built for all-day ease, with precision control and instant responsiveness.
- **Steering Lock:** When you take your foot off Ultrex's foot pedal, the motor head remains pointed in the direction you left it. No recoil or readjustment, just easier steering every day.
- **Advanced GPS Trolling System:** The One-Boat Network gives you unprecedented control over your boat by linking your trolling motor to your Humminbird fish finder. Control your trolling motor from the included remote or a connected Humminbird. You can set Spot-Locks, record paths, follow depth contours, automatically navigate to your favorite spots, control speed and steering, and more.
- **Spot-Lock with Jog:** Spot-Lock will hold you in place with unparalleled GPS accuracy. Available on the pre-installed GPS system, Spot-Lock gives you the power to stay right on top of any productive fishing spot, without touching your trolling motor. With the included heading sensor, you can use Jog to move your Spot-Lock location five feet in any direction.
- **Lift-Assist:** Ultrex's patented Lift-Assist Design cuts the weight of stow and deploy in half. Features a stainless steel, nitrogen gas-charged spring.
- **Heel-Toe/Cable Foot Pedal:** It's the only foot pedal with Power Steering for all-day comfort and instant responsiveness - plus a button to activate Spot-Lock electronic anchor.
- **Digital Maximizer:** Provides up to 5 times longer run time on a single battery charge. These variable speed trolling motors let you dial in your exact speed, and they deliver only as much power as you need, helping to conserve your battery for a full day of fishing.
- **Indestructible Composite Shaft:** Guaranteed for Life: At the core of your Minn Kota trolling motor is an indestructible composite shaft. It's a Minn Kota exclusive, and we guarantee it for life.
- **Mobile App Compatibility:** Control Ultrex directly from your Apple or Android device with our mobile app. You get quick command of speed, steering, Spot-Lock and AutoPilot - plus the ability to update software.

DUAL SPECTRUM CHIRP

- **Built-In Dual Spectrum CHIRP Sonar:** Keeps your transducer and wiring completely concealed and protected running everything through the trolling motor's shaft. By covering a wide range of frequencies, Humminbird's CHIRP produces more accurate, more detailed returns of fish, structure and the bottom than traditional sonar.

Order No.	Mfg. No. / Description	List Price
4756121	(1368890) 45" Shaft 80# Thrust 24 volt	\$2,999.99 Z0-1615520
4756123	(1368891) 52" Shaft 80# Thrust 24 volt	\$3,099.99 Z0-1615520
4756125	(1368895) 45" Shaft 112# Thrust 36 volt	\$3,199.99 Z0-2933620
4756127	(1368896) 52" Shaft 112# Thrust 36 volt	\$3,299.99 Z0-3261720
4756129	(1368894) 60" Shaft 112# Thrust 36 volt	\$3,399.99 Z0-4589720

QUEST SERIES - DUAL SPECTRUM CHIRP

- **QUEST Series:** These 24/36V dual-voltage brushless motors have been completely re-imagined from the ground up with updates to mounts, propellers, lift assist systems, drive motors and software - taking the world's greatest trolling motors and redesigning them to outperform everything else on the water for years to come.
- **Drift mode** automatically engages speed and course control simultaneously, meaning anglers no longer need to depend on drift socks, kicker motors, or manual operation to control speed over water - even in the heaviest wind and current.
- **Heel-Toe/Programmable Foot Pedal:** It's the only foot pedal with Power Steering for all-day comfort and instant responsiveness - plus a user-programmable button to keep the most used features a tap away, including: mark a waypoint, engage AutoPilot, or deploy or retract Minn Kota shallow water anchors.
- **Real-time Battery Monitoring:** Check battery power levels while the motor is in use, real-time "time until empty" display monitor, with a notification when battery power is reduced to 20% to prompt users to enter "Eco-mode" which can reduce current draw to extend battery life.
- **Built-In Dual Spectrum CHIRP Sonar:** Keeps your transducer and wiring completely concealed and protected running everything through the trolling motor's shaft. By covering a wide range of frequencies, Humminbird's CHIRP produces more accurate, more detailed returns of fish, structure and the bottom than traditional sonar.

Order No.	Mfg. No. / Description	List Price
4756137	(1368900) 45" Shaft 90# (24v) / 115# (36v)	\$3,699.99 Z0-7454030
4756139	(1368901) 52" Shaft 90# (24v) / 115# (36v)	\$3,799.99 Z0-8772130
4756141	(1368902) 60" Shaft 90# (24v) / 115# (36v)	\$3,899.99 Z0-9001230

SPECIAL HANDLING MAY APPLY



Minn Kota Ultrex Series Trolling Motors - Bluetooth



i-PILOT GPS with Universal Sonar 2 4756008



i-PILOT LINK GPS with Universal Sonar 2 4756025



i-PILOT LINK GPS with Built-in Mega Down Imaging 4756071

- **Freshwater.**
- **Bow mount, foot control.**
- **Power Steering:** The most comfortable, responsive steering available. Ultrex's foot pedal is built for all-day ease, with precision control and instant responsiveness.
- **Steering Lock:** When you take your foot off Ultrex's foot pedal, the motor head remains pointed in the direction you left it. No recoil or readjustment, just easier steering every day.
- **Spot-Lock with Jog:** Spot-Lock will hold you in place with unparalleled GPS accuracy. Available on i-Pilot GPS system that is pre-installed, Spot-Lock gives you the power to stay right on top of any productive fishing spot, without touching your trolling motor. With the included heading sensor, you can use Jog to move your Spot-Lock location five feet in any direction. Activate Spot-Lock from the i-Pilot remote or Humminbird fish finder.
- **Lift-Assist:** Ultrex's patented Lift-Assist Design cuts the weight of stow and deploy in half. Features a stainless steel, nitrogen gas-charged spring.
- **Mobile App Compatibility:** Control i-Pilot directly from your Apple or Android device with our mobile app. You get quick command of speed, steering, Spot-Lock and Advanced AutoPilot - plus the ability to update i-Pilot software.

- **Heel-Toe/Cable Foot Pedal:** It's the only foot pedal with Power Steering for all-day comfort and instant responsiveness - plus a button to activate Spot-Lock electronic anchor.
- **AutoPilot:** Automatically navigate your boat in any direction you choose. Just point the head of your trolling motor in the direction you want to travel, activate AutoPilot, and your trolling motor will keep you on that heading automatically, even correcting for wind, waves and current.
- **Integrated Battery Meter:** The i-Pilot remote can tell you the exact charge left in your trolling batteries, so you know how much time you have left on the water.
- **Digital Maximizer:** Provides up to 5 times longer run time on a single battery charge. These variable speed trolling motors let you dial in your exact speed, and they deliver only as much power as you need, helping to conserve your battery for a full day of fishing.
- Weedless Wedge 2 Prop.
- Indestructible Composite Shaft.
- Cool, Quiet Power.
- 2-year warranty.

• **i-Pilot GPS Trolling System:** The most-trusted GPS system in fishing. i-Pilot uses GPS to control your trolling motor with incredible features that keep you on the fish. Set Spot-Locks, record paths, control speed and steering, and more. i-Pilot makes boat positioning and control automatic, and you can take command from its easy-to-read large LCD screen.

LIMITED QUANTITIES

• **i-Pilot Link Integrated GPS Trolling System:** i-Pilot Link gives you unprecedented control over your boat by linking your trolling motor to your Humminbird fish finder. Control your trolling motor from Link's color touch-screen remote or the Humminbird. You can set Spot-Locks, record paths, follow depth contours, automatically navigate to your favorite spots, control speed and steering, and more.

LIMITED QUANTITIES

i-PILOT GPS WITH UNIVERSAL SONAR 2

Order No.	Mfg. No. / Description	List Price
4756008	(1368801) 52" Shaft 80# Thrust 24 volt	\$2,461.59 Z0-8310020
4756013	(1368820) 45" Shaft 112# Thrust 36 volt	\$2,506.34 Z0-6773020
4756015	(1368821) 52" Shaft 112# Thrust 36 volt	\$2,551.10 Z0-5147020

i-PILOT LINK GPS WITH UNIVERSAL SONAR 2

Order No.	Mfg. No. / Description	List Price
4756025	(1368830) 45" Shaft 112# Thrust 36 volt	\$2,864.39 Z0-7882320
4756027	(1368831) 52" Shaft 112# Thrust 36 volt	\$2,909.15 Z0-6256320

i-PILOT LINK GPS WITH BUILT-IN MEGA DOWN IMAGING

Order No.	Mfg. No. / Description	List Price
4756071	(1368880) 45" Shaft 112# Thrust 36 volt	\$2,953.90 Z0-5610420
4756073	(1368881) 52" Shaft 112# Thrust 36 volt	\$2,998.66 Z0-4083420

i-PILOT LINK GPS WITH BUILT-IN MEGA DOWN/SIDE IMAGING

Order No.	Mfg. No. / Description	List Price
4756105	(1368885) 45" Shaft 112# Thrust 36 volt	\$3,132.93 Z0-1274520
4756107	(1368886) 52" Shaft 112# Thrust 36 volt	\$3,177.69 Z0-0638520
4756109	(1368887) 60" Shaft 112# Thrust 36 volt	\$3,222.44 Z0-8991620



SPECIAL HANDLING MAY APPLY



- Electronics
- Trolling Motors
- Instruments
- Electrical
- Lighting
- Anchor & Dock
- Safety
- Steering, Controls
- Pumps
- Fuel System
- Seating & Pedestals
- Trailering
- Tops & Covers
- Perform.
- Propellers
- Engine & Care
- Cleaning & Care
- Paint & Paint Acc.
- Fun & Flotation
- Topside Acc.
- Cockpit & Deck
- Hardware, Fasteners
- Camouflage
- Misc.
- Comm.

Minn Kota Ulterra Series Trolling Motors



QUEST SERIES with Mega Down/Side Imaging 4756199



QUEST SERIES with Dual Spectrum CHIRP 4756193

MAP PRICE

MAP PRICE

- Electronics
- Trolling Motors**
- Instruments
- Electrical
- Lighting
- Anchor & Dock
- Safety
- Steering, Controls
- Pumps
- Fuel System
- Seating & Pedestals
- Trailering
- Tops & Covers
- Perform.
- Propellers
- Engine & Care
- Cleaning & Care
- Paint & Paint Acc.
- Fun & Flotation
- Topside Acc.
- Cockpit & Deck
- Hardware, Fasteners
- Camouflage
- Misc.
- Comm.

MEGA DOWN IMAGING

• **Built-In MEGA Down Imaging:** With a transducer built right into the motor, you get crystal clear Humminbird MEGA Down Imaging and a clean protected look.

Order No.	Mfg. No. / Description	List Price
4756181	(1358970) 45" Shaft 80# Thrust 24 volt	\$2,899.99 Z0-9984420
4756183	(1358971) 60" Shaft 80# Thrust 24 volt	\$2,999.99 Z0-4433520
4756185	(1358940) 60" Shaft 112# Thrust 36 volt	\$3,199.99 Z0-3320720

QUEST SERIES - MEGA DOWN/SIDE IMAGING

- **QUEST Series:** These 24/36V dual-voltage brushless motors have been completely re-imagined from the ground up with updates to mounts, propellers, lift assist systems, drive motors and software - taking the world's greatest trolling motors and redesigning them to outperform everything else on the water for years to come.
- **Part of the One-Boat Network:** Out of the box, Minn Kota motors come standard with everything you need to connect to select Humminbird fish finders, unlocking more advanced navigation features without needing to remember additional adapters or complicated set-up procedures.
- **Real-time Battery Monitoring:** Check battery power levels while the motor is in use, real-time "time until empty" display monitor, with a notification when battery power is reduced to 20% to prompt users to enter "Eco-mode" which can reduce current draw to extend battery life.
- **Built-In MEGA Side Imaging:** With a transducer built right into the motor, you get crystal clear Humminbird MEGA Side Imaging and a clean protected look.

Order No.	Mfg. No. / Description	List Price
4756199	(1358501) 45" Shaft 90# (24v) / 115# (36v)	\$4,099.99 Z0-7326430
4756201	(1358502) 60" Shaft 90# (24v) / 115# (36v)	\$4,199.99 Z0-2864530
4756203	(1358503) 72" Shaft 90# (24v) / 115# (36v)	\$4,499.99 Z0-6100830

- **Freshwater.**
- **Bow mount.**
- **Auto Stow & Deploy:** Stow or deploy Ulterra just by pushing a button on your wireless remote, foot pedal, the One-Boat Network App or Humminbird fish finder.
- **Power Trim:** Trim Ulterra up or down at the push of a button - on either the foot pedal, the wireless remote, the One-Boat Network App or a Humminbird fish finder. Adjust to changing fishing conditions without reaching down to your trolling motor.
- **Advanced GPS Trolling System:** The most-trusted navigation system in fishing. Ulterra uses GPS to control your trolling motor with unrivaled features that keep you on the fish. Set Spot-Locks, record paths, control speed and steering, and more. Minn Kota makes boat positioning and control automatic, and you can take command from the easy-to-read LCD screen of Ulterra's wireless remote.
- **Spot-Lock with Jog:** Spot-Lock will hold you in place with unparalleled GPS accuracy. Spot-Lock gives you the power to stay right on top of any productive fishing spot, without touching your trolling motor. With the built-in heading sensor, you can use Jog to move your Spot-Lock location five feet in any direction.
- **Drift Mode** gives you point and shoot navigation for superior boat control in any direction, at any speed without the need of drift socks, kicker motors, or manual operation - even in the heaviest wind and current.
- **Heel-Toe Programmable Electric Foot Pedal:** Stow, deploy and adjust the trim on Ulterra, all from the foot pedal - plus a user-programmable button to keep the most used features a tap away, including: mark a waypoint, engage AutoPilot, or deploy or retract Minn Kota shallow water anchors. Includes 18' cord.
- **Digital Maximizer:** Provides up to 5 times longer run time on a single battery charge. These variable speed trolling motors let you dial in your exact speed, and they deliver only as much power as you need, helping to conserve your battery for a full day of fishing.
- **Indestructible Composite Shaft:** Guaranteed for Life: At the core of your Minn Kota trolling motor is an indestructible composite shaft. It's a Minn Kota exclusive, and we guarantee it for life.
- **Mobile App Compatibility:** Control Ulterra directly from your Apple or Android device with the One-Boat Network app. You get quick command of speed, steering, Spot-Lock and AutoPilot - plus the ability to update software.

DUAL SPECTRUM CHIRP

• **Built-In Dual Spectrum CHIRP Sonar:** Keeps your transducer and wiring completely concealed and protected running everything through the trolling motor's shaft. By covering a wide range of frequencies, Humminbird's CHIRP produces more accurate, more detailed returns of fish, structure and the bottom than traditional sonar.

Order No.	Mfg. No. / Description	List Price
4756187	(1358975) 45" Shaft 80# Thrust 24 volt	\$2,799.99 Z0-4546320
4756189	(1358976) 60" Shaft 80# Thrust 24 volt	\$2,899.99 Z0-9984420
4756191	(1358945) 60" Shaft 112# Thrust 36 volt	\$3,099.99 Z0-9871620

QUEST SERIES - DUAL SPECTRUM CHIRP

- **QUEST Series:** These 24/36V dual-voltage brushless motors have been completely re-imagined from the ground up with updates to mounts, propellers, lift assist systems, drive motors and software - taking the world's greatest trolling motors and redesigning them to outperform everything else on the water for years to come.
- **Part of the One-Boat Network:** Out of the box, Minn Kota motors come standard with everything you need to connect to select Humminbird fish finders, unlocking more advanced navigation features without needing to remember additional adapters or complicated set-up procedures.
- **Real-time Battery Monitoring:** Check battery power levels while the motor is in use, real-time "time until empty" display monitor, with a notification when battery power is reduced to 20% to prompt users to enter "Eco-mode" which can reduce current draw to extend battery life.
- **Built-In Dual Spectrum CHIRP Sonar:** Keeps your transducer and wiring completely concealed and protected running everything through the trolling motor's shaft. By covering a wide range of frequencies, Humminbird's CHIRP produces more accurate, more detailed returns of fish, structure and the bottom than traditional sonar.

Order No.	Mfg. No. / Description	List Price
4756193	(1358540) 45" Shaft 90# (24v) / 115# (36v)	\$3,799.99 Z0-2090230
4756195	(1358541) 60" Shaft 90# (24v) / 115# (36v)	\$3,899.99 Z0-7439230
4756197	(1358542) 72" Shaft 90# (24v) / 115# (36v)	\$4,199.99 Z0-2864530

SPECIAL HANDLING MAY APPLY



Minn Kota Ultrera Series Trolling Motors - Bluetooth



i-PILOT LINK GPS with Built-in Mega Down Imaging 4755997



i-PILOT LINK GPS with Built-in Mega Down/Side Imaging 4756091

- **Freshwater.**
- **Bow mount, foot control.**
- **Auto Stow & Deploy:** Stow or deploy Ultrera just by pushing a button on your i-Pilot or i-Pilot Link remote, foot pedal or Humminbird fish finder.
- **Power Trim:** Trim Ultrera up or down at the push of a button - on either the foot pedal, the i-Pilot or i-Pilot Link remote or a Humminbird fish finder. Adjust to changing fishing conditions without reaching down to your trolling motor.
- **Spot-Lock with Jog:** Spot-Lock will hold you in place with unparalleled GPS accuracy. Available on i-Pilot GPS system that is pre-installed, Spot-Lock gives you the power to stay right on top of any productive fishing spot, without touching your trolling motor. With the included heading sensor, you can use Jog to move your Spot-Lock location five feet in any direction. Activate Spot-Lock from the i-Pilot remote or Humminbird fish finder.
- **AutoPilot:** Automatically navigate your boat in any direction you choose. Just point the head of your trolling motor in the direction you want to travel, activate AutoPilot, and your trolling motor will keep you on that heading automatically, even correcting for wind, waves and current.

- **Mobile App Compatibility:** Control i-Pilot directly from your Apple or Android device with our mobile app. You get quick command of speed, steering, Spot-Lock and Advanced AutoPilot - plus the ability to update i-Pilot software.
- **Heel-Toe Electric Foot Pedal:** Stow, deploy and adjust the trim on Ultrera - all from the foot pedal. You can even activate Spot-Lock with one tap. Includes 18' cord.
- **Integrated Battery Meter:** The i-Pilot remote can tell you the exact charge left in your trolling batteries, so you know how much time you have left on the water.
- **Digital Maximizer:** Provides up to 5 times longer run time on a single battery charge. These variable speed trolling motors let you dial in your exact speed, and they deliver only as much power as you need, helping to conserve your battery for a full day of fishing.
- Weedless Wedge 2 Prop.
- Indestructible Composite Shaft.
- Cool, Quiet Power.
- 2-year warranty



- **i-Pilot Link Integrated GPS Trolling System:** i-Pilot Link gives you unprecedented control over your boat by linking your trolling motor to your Humminbird fish finder. Control your trolling motor from Link's color touch-screen remote or the Humminbird. You can set Spot-Locks, record paths, follow depth contours, automatically navigate to your favorite spots, control speed and steering, and more.

LIMITED QUANTITIES

i-PILOT LINK GPS WITH BUILT-IN MEGA DOWN IMAGING

Order No.	Mfg. No. / Description	80# Thrust	24 volt	List Price	Z0-6398320
4755997	(1358981) 60" Shaft	80# Thrust	24 volt	\$2,938.79	Z0-6398320
4755998	(1358991) 60" Shaft	112# Thrust	36 volt	\$3,168.39	Z0-3067520

i-PILOT LINK GPS WITH BUILT-IN MEGA DOWN/SIDE IMAGING

Order No.	Mfg. No. / Description	80# Thrust	24 volt	List Price	Z0-0783520
4756091	(1358986) 60" Shaft	80# Thrust	24 volt	\$3,122.46	Z0-0783520
4756093	(1358995) 60" Shaft	112# Thrust	36 volt	\$3,352.06	Z0-7352720
4756095	(1358996) 72" Shaft	112# Thrust	36 volt	\$3,489.81	Z0-7373820



SPECIAL HANDLING MAY APPLY



- Electronics
- Trolling Motors
- Instruments
- Electrical
- Lighting
- Anchor & Dock
- Safety
- Steering, Controls
- Pumps
- Fuel System
- Seating & Pedestals
- Trailering
- Tops & Covers
- Perform.
- Propellers
- Engine & Care
- Cleaning & Care
- Paint & Paint Acc.
- Fun & Flotation
- Topside Acc.
- Cockpit & Deck
- Hardware, Fasteners
- Camouflage
- Misc.
- Comm.

- Electronics
- Trolling Motors
- Instruments
- Electrical
- Lighting
- Anchor & Dock
- Safety
- Steering, Controls
- Pumps
- Fuel System
- Seating & Pedestals
- Trailering
- Tops & Covers
- Perform.
- Propellers
- Engine & Care
- Cleaning & Care
- Paint & Paint Acc.
- Fun & Flotation
- Topside Acc.
- Cockpit & Deck
- Hardware, Fasteners
- Camouflage
- Misc.
- Comm.

Minn Kota Terrova Series Trolling Motors

MINN KOTA



QUEST SERIES with Dual Spectrum CHIRP 4756169

QUEST SERIES with Mega Down/Side Imaging 4756171

MAP PRICE

Order No.	Mfg. No. / Description	List Price
4756165	(1358350) 54" Shaft 55# Thrust 12 volt	\$1,649.99 Z0-6548310
4756167	(1358380) 60" Shaft 80# Thrust 24 volt	\$1,999.99 Z0-6287610

MEGA DOWN IMAGING

• **Built-In MEGA Down Imaging:** With a transducer built right into the motor, you get crystal clear Humminbird MEGA Down Imaging and a clean protected look.

Order No.	Mfg. No. / Description	List Price
4756145	(1358385) 45" Shaft 80# Thrust 24 volt	\$2,299.99 Z0-1003910
4756147	(1358386) 60" Shaft 80# Thrust 24 volt	\$2,399.99 Z0-2931020
4756149	(1358315) 60" Shaft 112# Thrust 36 volt	\$2,599.99 Z0-5718120
4756151	(1358316) 72" Shaft 112# Thrust 36 volt	\$2,899.99 Z0-9433420

QUEST SERIES - MEGA DOWN/SIDE IMAGING

- **QUEST Series:** These 24/36V dual-voltage brushless motors have been completely re-imagined from the ground up with updates to mounts, propellers, lift assist systems, drive motors and software - taking the world's greatest trolling motors and redesigning them to outperform everything else on the water for years to come.
- **Part of the One-Boat Network:** Out of the box, Minn Kota motors come standard with everything you need to connect to select Humminbird fish finders, unlocking more advanced navigation features without needing to remember additional adapters or complicated set-up procedures.
- **Drift mode** automatically engages speed and course control simultaneously, meaning anglers no longer need to depend on drift socks, kicker motors, or manual operation to control speed over water - even in the heaviest wind and current.
- **Real-time Battery Monitoring:** Check battery power levels while the motor is in use, real-time "time until empty" display monitor, with a notification when battery power is reduced to 20% to prompt users to enter "Eco-mode" which can reduce current draw to extend battery life.
- **Built-In MEGA Side Imaging:** With a transducer built right into the motor, you get crystal clear Humminbird MEGA Side Imaging and a clean protected look.

Order No.	Mfg. No. / Description	List Price
4756171	(1358210) 45" Shaft 90# (24v) / 115# (36v)	\$3,499.99 Z0-2060820
4756175	(1358211) 60" Shaft 90# (24v) / 115# (36v)	\$3,599.99 Z0-0268820
4756179	(1358212) 72" Shaft 90# (24v) / 115# (36v)	\$3,899.99 Z0-1762130

- **Freshwater.**
- **Bow mount.**
- **Advanced GPS Trolling System:** The most-trusted navigation system in fishing. Terrova uses GPS to control your trolling motor with unrivaled features that keep you on the fish. Set Spot-Locks, record paths, control speed and steering, and more. Minn Kota makes boat positioning and control automatic, and you can take command from the easy-to-read LCD screen of Terrova's wireless remote.
- **Spot-Lock with Jog:** Spot-Lock will hold you in place with unparalleled GPS accuracy. Available on GPS system that is pre-installed, Spot-Lock gives you the power to stay right on top of any productive fishing spot, without touching your trolling motor. With the included heading sensor, you can use Jog to move your Spot-Lock location five feet in any direction. Activate Spot-Lock from the wireless remote or Humminbird fish finder.
- **AutoPilot:** Automatically navigate your boat in any direction you choose. Just point the head of your trolling motor in the direction you want to travel, activate AutoPilot and your trolling motor will keep you on that heading automatically, even correcting for wind, waves and current.
- **Push-to-Test Battery Meter:** Press a button on the trolling motor head to get an instant status of battery life you have left.
- **Digital Maximizer:** Provides up to 5 times longer run time on a single battery charge. These variable speed trolling motors let you dial in your exact speed, and they deliver only as much power as you need, helping to conserve your battery for a full day of fishing.
- **Indestructible Composite Shaft:** Guaranteed for Life: At the core of your Minn Kota trolling motor is an indestructible composite shaft. It's a Minn Kota exclusive, and we guarantee it for life.
- **Mobile App Compatibility:** Control Terrova directly from your Apple or Android device with our mobile app. You get quick command of speed, steering, Spot-Lock and AutoPilot - plus the ability to update software.
- **Electric Foot Pedal:** Low-profile design offers two steering options: heel/toe pedal and left/right steering buttons. Includes Spot-Lock activation, rotary speed control dial, momentary/constant on toggle, AutoPilot on/off toggle and 18' cable with waterproof connector plug.

MAP PRICE

DUAL SPECTRUM CHIRP

• **Built-In Dual Spectrum CHIRP Sonar:** Keeps your transducer and wiring completely concealed and protected running everything through the trolling motor's shaft. By covering a wide range of frequencies, Humminbird's CHIRP produces more accurate, more detailed returns of fish, structure and the bottom than traditional sonar.

Order No.	Mfg. No. / Description	List Price
4756153	(1358355) 45" Shaft 55# Thrust 12 volt	\$1,899.99 Z0-6349510
4756143	(1358356) 54" Shaft 55# Thrust 12 volt	\$1,949.99 Z0-1363610
4756155	(1358381) 45" Shaft 80# Thrust 24 volt	\$2,199.99 Z0-9064810
4756157	(1358382) 60" Shaft 80# Thrust 24 volt	\$2,299.99 Z0-1003910
4756159	(1358383) 72" Shaft 80# Thrust 24 volt	\$2,599.99 Z0-5718120
4756161	(1358310) 60" Shaft 112# Thrust 36 volt	\$2,499.99 Z0-4879020
4756163	(1358311) 72" Shaft 112# Thrust 36 volt	\$2,799.99 Z0-7594320

QUEST SERIES - DUAL SPECTRUM CHIRP

- **QUEST Series:** These 24/36V dual-voltage brushless motors have been completely re-imagined from the ground up with updates to mounts, propellers, lift assist systems, drive motors and software - taking the world's greatest trolling motors and redesigning them to outperform everything else on the water for years to come.
- **Part of the One-Boat Network:** Out of the box, Minn Kota motors come standard with everything you need to connect to select Humminbird fish finders, unlocking more advanced navigation features without needing to remember additional adapters or complicated set-up procedures.
- **Drift mode** automatically engages speed and course control simultaneously, meaning anglers no longer need to depend on drift socks, kicker motors, or manual operation to control speed over water - even in the heaviest wind and current.
- **Real-time Battery Monitoring:** Check battery power levels while the motor is in use, real-time "time until empty" display monitor, with a notification when battery power is reduced to 20% to prompt users to enter "Eco-mode" which can reduce current draw to extend battery life.
- **Built-In Dual Spectrum CHIRP Sonar:** Keeps your transducer and wiring completely concealed and protected running everything through the trolling motor's shaft. By covering a wide range of frequencies, Humminbird's CHIRP produces more accurate, more detailed returns of fish, structure and the bottom than traditional sonar.

Order No.	Mfg. No. / Description	List Price
4756169	(1358200) 45" Shaft 90# (24v) / 115# (36v)	\$3,199.99 Z0-1556520
4756173	(1358201) 60" Shaft 90# (24v) / 115# (36v)	\$3,299.99 Z0-8654620
4756177	(1358202) 72" Shaft 90# (24v) / 115# (36v)	\$3,599.99 Z0-0268820

SPECIAL HANDLING MAY APPLY



Minn Kota Terrova Series Trolling Motors - Bluetooth



- **Freshwater.**
- **Bow mount, foot control.**
- Lift-Assist Design.
- Stow/Deploy Lever.
- Power Steering.
- Wireless Remote.
- Push-to-Test Battery Meter. Digital Maximizer.
- **Spot-Lock with Jog:** Available on i-Pilot GPS system that is pre-installed.
- **Mobile App Compatibility:** Control i-Pilot directly from your Apple or Android device with our mobile app.
- **AutoPilot:** Automatically navigate your boat in any direction you choose. Just point the head of your trolling motor in the direction you want to travel, activate AutoPilot, and your trolling motor will keep you on that heading automatically, even correcting for wind, waves and current.
- Weedless Wedge 2 Prop.
- Indestructible Composite Shaft.
- Cool, Quiet Power.
- 2-year warranty.



LIMITED QUANTITIES

i-PILOT LINK GPS WITH BUILT-IN MEGA DOWN IMAGING (ELECTRIC FOOT PEDAL)

Order No.	Mfg. No. / Description	List Price
4755962	(1358884) 60" Shaft 80# Thrust 24 volt	\$2,418.28 Z0-6166910
4755964	(1358837) 60" Shaft 112# Thrust 36 volt	\$2,646.43 Z0-6615120

MAP PRICE

Minn Kota Maxxum Series Trolling Motors



- **Freshwater.**
- **Bow mount, foot control.**
- **Bowguard 360° Breakaway Mount:** Breaks away on impact, then automatically resets itself, giving you uninterrupted fishing and an extra safeguard from damaging your trolling motor or boat. It even detaches for added convenience.
- **Heel-Toe/Cable-Steer Foot Pedal:** Get heel/toe control of your motor with this ultra-responsive foot pedal that includes speed control, and momentary and constant on/off. Made with a high-impact composite material for unparalleled durability.
- **Illuminated Directional Indicator:** Easy-to-read illuminated directional indicator built right into the motor head tells you right where you're headed.
- Weedless Wedge 2 Prop.
- Indestructible Composite Shaft.
- Cool, Quiet Power.
- 2-year warranty.



LIMITED QUANTITIES

5-SPEED SETTINGS

- **5-Speed Settings:** Choose from five forward speed settings to dial in the right speed control when you're trolling.

Order No.	Mfg. No. / Description	List Price
475397	(1368560) 42" Shaft 70# Thrust 24 volt	\$903.29 C0-0876700

VARIABLE SPEED CONTROL WITH DIGITAL MAXIMIZER

- **Digital Maximizer:** Provides up to 5 times longer run time on a single battery charge. These variable speed trolling motors let you dial in your exact speed, and they deliver only as much power as you need, helping to conserve your battery for a full day of fishing.

Order No.	Mfg. No. / Description	List Price
475410	(1368561) 42" Shaft 70# Thrust 24 volt	\$1,039.49 C0-7538800
475424	(1368562) 52" Shaft 70# Thrust 24 volt	\$1,103.99 C0-9383900

Minn Kota Fortrex Series Trolling Motors



- **Freshwater.**
- **Bow mount, foot control.**
- Lift-Assist Mount.
- Removable Bowguard 360° Bracket.
- Mono-Arm Design.
- **Built-In Dual Spectrum CHIRP Sonar:** Keeps your transducer and wiring completely concealed and protected running everything through the trolling motor's shaft. By covering a wide range of frequencies, Humminbird's CHIRP produces more accurate, more detailed returns of fish, structure and the bottom than traditional sonar.
- Heel-Toe / Cable-Steer Foot Pedal.
- Push-To-Test Battery Meter.
- **Counter-Tension Stabilizer:** An integrated spring in this mount applies force whether the trolling motor is stowed or deployed. That translates to a trolling motor with no play, no give, reduced steering torque and years of silent operation.
- Illuminated Directional Indicator.
- Digital Maximizer.
- Weedless Wedge 2 Prop.
- Indestructible Composite Shaft.
- Cool, Quiet Power.



Order No.	Mfg. No. / Description	List Price
475594	(1368667) 45" Shaft 80# Thrust 24 volt	\$1,599.99 Z0-5961310
475595	(1368668) 52" Shaft 80# Thrust 24 volt	\$1,649.99 Z0-1185310
475596	(1368677) 45" Shaft 112# Thrust 36 volt	\$1,799.99 Z0-7518410

Minn Kota Fortrex Series Trolling Motors



- **Freshwater.**
- **Bow mount, foot control.**
- Lift-Assist Mount.
- **Removable Bowguard 360° Bracket:** Breaks away on impact from any angle and automatically resets itself, giving you uninterrupted fishing. Plus, its dual bearing system eliminates noise and the entire mount is easily removable.
- **Mono-Arm Design:** Made of extruded, anodized aluminum with solid one-piece construction that helps your trolling motor run quieter, with less wear for longer life.
- Counter-Tension Stabilizer.
- Illuminated Directional Indicator.
- Heel-Toe/Cable-Steer Foot Pedal.
- Push-to-Test Battery Meter. Digital Maximizer.
- Weedless Wedge 2 Prop.
- Indestructible Composite Shaft. Cool, Quiet Power.
- 2-year warranty.



LIMITED QUANTITIES

DOES NOT INCLUDE BUILT-IN SONAR

Order No.	Mfg. No. / Description	List Price
475599	(1368687) 45" Shaft 112# Thrust 36 volt	\$1,685.99 Z0-8354210

UNIVERSAL SONAR 2

Order No.	Mfg. No. / Description	List Price
475592	(1368671) 52" Shaft 80# Thrust 24 volt	\$1,549.99 Z0-7460210
475610	(1368695) 45" Shaft 112# Thrust 36 volt	\$1,699.99 Z0-223210

SPECIAL HANDLING MAY APPLY



- Electronics
- Trolling Motors
- Instruments
- Electrical
- Lighting
- Anchor & Dock
- Safety
- Steering, Controls
- Pumps
- Fuel System
- Seating & Pedestals
- Trailering
- Tops & Covers
- Perform.
- Propellers
- Engine & Care
- Cleaning & Care
- Paint & Paint Acc.
- Fun & Flotation
- Topside Acc.
- Cockpit & Deck
- Hardware, Fasteners
- Camouflage
- Misc.
- Comm.

Electronics

Trolling Motors

Instruments

Electrical

Lighting

Anchor & Dock

Safety

Steering, Controls

Pumps

Fuel System

Seating & Pedestals

Trailering

Tops & Covers

Perform.

Propellers

Engine & Care

Cleaning & Care

Paint & Paint Acc.

Fun & Flotation

Topside Acc.

Cockpit & Deck

Hardware, Fasteners

Camouflage

Misc.

Comm.

Minn Kota PowerDrive Series Trolling Motors



- **Freshwater.**
- **Bow mount.**
- **Deploy-Assist Lever:** Get in and out of the water easily. Just depress the lever to deploy your trolling motor and when it's time to move, it stows easily and securely.
- **Side-to-Side/Electric Foot Pedal:** Control speed, steering, and momentary and constant on/off with the PowerDrive foot pedal, which is waterproof and features an 18' cord. Note: the foot pedal is not included with GPS enabled models.
- **Push-To-Test Battery Meter:** Press a button to get an instant "stage of charge" reading.
- Digital Maximizer.
- Power Prop.
- Indestructible Composite Shaft.
- Cool, Quiet Power.

Order No.	Mfg. No. / Description	List Price
4756041	(1358441) 48" Shaft 45# Thrust 12 volt	\$853.09 CO-3152700
4756043	(1358453) 54" Shaft 55# Thrust 12 volt	\$935.89 CO-1559700
4756051	(1358473) 60" Shaft 70# Thrust 24 volt	\$1,103.39 CO-8873900

DUAL SPECTRUM CHIRP

- **Built-In Dual Spectrum CHIRP Sonar:** Keeps your transducer and wiring completely concealed and protected running everything through the trolling motor's shaft. By covering a wide range of frequencies, Humminbird's CHIRP produces more accurate, more detailed returns of fish, structure and the bottom than traditional sonar.

Order No.	Mfg. No. / Description	List Price
4756047	(1358450) 54" Shaft 55# Thrust 12 volt	\$1,023.49 CO-7996800
4756053	(1358470) 60" Shaft 70# Thrust 24 volt	\$1,189.19 CO-1801010

ONE-BOAT NETWORK COMPATIBLE

- **Advanced GPS Trolling System:** The most-trusted navigation system in fishing. Powerdrive uses GPS to control your trolling motor with unrivaled features that keep you on the fish. Set Spot-Locks, control speed and steering, and more. Minn Kota makes boat positioning and control automatic, and you can take command from Powerdrive's simple and straight-forward micro remote.

Order No.	Mfg. No. / Description	List Price
4756033	(1358451) 54" Shaft 55# Thrust 12 volt	\$1,218.39 CO-3653010
4756037	(1358471) 54" Shaft 70# Thrust 24 volt	\$1,559.49 CO-7552310

ONE-BOAT NETWORK COMPATIBLE & DUAL SPECTRUM CHIRP

Order No.	Mfg. No. / Description	List Price
4756035	(1358452) 54" Shaft 55# Thrust 12 volt	\$1,315.79 CO-2481110
4756039	(1358472) 60" Shaft 70# Thrust 24 volt	\$1,656.99 CO-4480410



Minn Kota PowerDrive Series Trolling Motors - Bluetooth



- **Freshwater.**
- **Bow mount, foot control.**
- Deploy-Assist Lever.
- Push-To-Test Battery Meter.
- Digital Maximizer.
- **AutoPilot:** Automatically navigate your boat in any direction you choose. Just point the head of your trolling motor in the direction you want to travel, activate AutoPilot, and your trolling motor will keep you on that heading automatically, even correcting for wind, waves and current.
- **Spot-Lock:** Just press a button, and Spot-Lock will hold you in place with unparalleled GPS accuracy. Available on i-Pilot GPS systems, Spot-Lock gives you the power to stay right on top of any productive fishing spot automatically, without touching your trolling motor.
- **Mobile App Compatibility:** Control i-Pilot directly from your Apple or Android device with our mobile app.
- Indestructible Composite Shaft.
- Cool, Quiet Power.
- 2-year warranty.

LIMITED QUANTITIES

UNIVERSAL SONAR 2 AND WEEDLESS WEDGE 2 PROP (ELECTRIC FOOT PEDAL)

Order No.	Mfg. No. / Description	List Price
4756038	(1358748) 54" Shaft 55# Thrust 12 volt	\$1,007.99 Z0-4244700
4756049	(1358763) 60" Shaft 70# Thrust 24 volt	\$1,219.99 Z0-2900900

Minn Kota Edge Series Trolling Motors



- **Freshwater.**
- **Bow mount, foot control.**
- **Latch & Door Bracket:** This bracket gives you a rock-solid hold while stowing your trolling motor and makes for easy removal at the end of the day.
- **Heel-Toe/Cable-Steer Foot Pedal:** Get heel/toe control of your motor with this ultra-responsive foot pedal that includes speed control, and momentary and constant on/off. Made with a high-impact composite material for unparalleled durability.
- **5-Speed Settings:** Choose from five speed settings to dial in the right speed control when you're trolling.
- Directional Indicator.
- Indestructible Composite Shaft.
- Cool, Quiet Power.
- 2-year warranty.

POWER PROP

Order No.	Mfg. No. / Description	List Price
475212	(1355946) 36" Shaft 45# Thrust 12 volt	\$474.29 CO-5130400
475214	(1355947) 45" Shaft 45# Thrust 12 volt	\$526.99 CO-4974400

WEEDLESS WEDGE 2 PROP

Order No.	Mfg. No. / Description	List Price
475290	(1355956) 45" Shaft 55# Thrust 12 volt	\$653.39 CO-8355500
475292	(1355957) 52" Shaft 55# Thrust 12 volt	\$684.99 CO-4228500
475296	(1355970) 45" Shaft 70# Thrust 24 volt	\$742.89 CO-6413600
475297	(1355971) 52" Shaft 70# Thrust 24 volt	\$800.99 CO-4808600

SPECIAL HANDLING MAY APPLY



Minn Kota Edge Series Trolling Motors



- **Freshwater.**
- **Bow mount, hand control.**
- **Latch & Door Bracket:** This bracket gives you a rock-solid hold while stowing your trolling motor and makes for easy removal at the end of the day.
- Edge Hand Control Motors are controlled with our natural, ergonomic Tilt Twist Tiller.
- 5 Forward/3 Reverse Speed Settings.
- Directional Indicator.
- Indestructible Composite Shaft.
- Cool, Quiet Power.
- 2-year warranty.

POWER PROP

Order No.	Mfg. No. / Description	45# Thrust	12 volt	List Price	CO-1551300
475218	(1355935) 45" Shaft			\$371.19	

WEEDLESS WEDGE 2 PROP

Order No.	Mfg. No. / Description	55# Thrust	12 volt	List Price	CO-1759400
475220	(1355963) 52" Shaft			\$583.19	

Minn Kota PowerDrive Pontoon Foot Control Series Trolling Motors



- **Freshwater.**
- **Bow mount, foot control.**
- Deploy-Assist Lever.
- Aluminum Quick Release Bracket.
- PowerDrive Foot Pedal.
- Power Steering.
- Push-to-Test Battery Meter.
- Digital Maximizer.
- Power Prop.
- Indestructible Composite Shaft.
- Cool, Quiet Power.
- 2-year warranty.

LIMITED QUANTITIES

Order No.	Mfg. No. / Description	54# Thrust	12 volt	List Price	ZO-0582700
4756004	(1358745) 48" Shaft			\$851.99	
4756005	(1358729) 48" Shaft	68# Thrust	24 volt	\$1,175.99	ZO-1999800

Minn Kota Pontoon Series Trolling Motors



- **Freshwater.**
- **Bow mount, foot control.**
- **Deploy-Assist Lever:** Get in and out of the water easily. Just depress the lever to deploy your trolling motor and when it's time to move, it stows easily and securely.
- **PowerDrive Foot Pedal:** Control speed, steering, and momentary and constant on/off with the PowerDrive foot pedal, which is waterproof and features an 18" cord. Not included on GPS enabled models.
- **Push-To-Test Battery Meter:** Press a button to get an instant "stage of charge" reading.
- **Digital Maximizer:** Provides up to 5 times longer run time on a single battery charge. These variable speed trolling motors let you dial in your exact speed, and they deliver only as much power as you need, helping to conserve your battery for a full day of fishing.
- Power Prop.
- Indestructible Composite Shaft.
- Cool, Quiet Power.

Order No.	Mfg. No. / Description	55# Thrust	12 volt	List Price	B0-5265800
4756205	(1358455) 48" Shaft			\$951.39	
4756207	(1358475) 48" Shaft	70# Thrust	24 volt	\$1,227.59	B0-3840110

Minn Kota Pontoon Hand Control Series Trolling Motors



- **Freshwater.**
- **Bow mount, hand control.**
- Latch & Door Bracket.
- Tilt Twist Tiller.
- Power Steering.
- 5 Forward/3 Reverse Speed Settings.
- Power Prop.
- Indestructible Composite Shaft.
- Cool, Quiet Power.
- 2-year warranty.

Order No.	Mfg. No. / Description	55# Thrust	12 volt	List Price	B0-1731500
474743	(1355964) 52" Shaft			\$570.79	
474746	(1355979) 52" Shaft	70# Thrust	24 volt	\$670.99	B0-9830600

Minn Kota Traxxis Series Trolling Motors



- **Freshwater.**
- **Transom mount, foot control.**
- One-Hand Stow.
- Tilt/Extend Tiller.
- Digital Maximizer.
- Quick-Lock Cam Depth Adjuster.
- Steering Tension Control.
- Push-to-Test Battery Meter.
- Indestructible Composite Shaft.
- Cool, Quiet Power.
- 2-year warranty.

LIMITED QUANTITIES

POWER PROP

Order No.	Mfg. No. / Description	45# Thrust	12 volt	List Price	ZO-2420300
7000946	(1368707) 36" Shaft			\$393.99	



SPECIAL HANDLING MAY APPLY



- Electronics
- Trolling Motors
- Instruments
- Electrical
- Lighting
- Anchor & Dock
- Safety
- Steering, Controls
- Pumps
- Fuel System
- Seating & Pedestals
- Trailering
- Tops & Covers
- Perform.
- Propellers
- Engine & Care
- Cleaning & Care
- Paint & Paint Acc.
- Fun & Flotation
- Topside Acc.
- Cockpit & Deck
- Hardware, Fasteners
- Camouflage
- Misc.
- Comm.

Minn Kota Traxxis Series Trolling Motors



- **Freshwater.**
- **Transom mount.**
- **One-Hand Stow:** Just pull up and forward to stow the motor with no buttons or release levers. Then when it's time to go, use the easy-access thumb release to deploy Traxxis into any of ten different positions.
- **Tilt/Extend Tiller:** Take command of your hand control trolling motor with this versatile tiller, which both tilts (up to 45°) and extends (up to 6"), and features a digital battery indicator on the head.
- **Digital Maximizer:** Provides up to 5 times longer run time on a single battery charge. These variable speed trolling motors let you dial in your exact speed, and they deliver only as much power as you need, helping to conserve your battery for a full day of fishing.
- **Quick-Cam Depth Adjuster:** Change trim depths quickly, simply and securely. When you find your depth, this easy-to-use adjuster locks in tight to keep your trolling motor right where you want it.
- **Steering Tension Control.**
- **Push-To-Test Battery Meter.**
- **Power Prop.**
- **Indestructible Composite Shaft.**
- **Cool, Quiet Power.**

Order No.	Mfg. No. / Description	List Price
475183	(1368715M) 36" Shaft 55# Thrust 12 volt	\$401.39 CO-8114300
475185	(1368716M) 42" Shaft 55# Thrust 12 volt	\$410.89 CO-6294300
475187	(1368730M) 42" Shaft 80# Thrust 24 volt	\$601.99 CO-9611500

Minn Kota Endura Max Trolling Motors



- **Freshwater.**
- **Transom mount, hand control.**
- **Lever-Lock Bracket.**
- **Telescoping Tiller.**
- **Digital Maximizer.**
- **Push-to-Test Battery Meter.**
- **Variable Speed Control.**
- **Power Prop.**
- **Indestructible Composite Shaft.**
- **Cool, Quiet Power.**
- **2-year warranty.**

Order No.	Mfg. No. / Description	List Price
474855	(1352145) 36" Shaft 45# Thrust 12 volt	\$287.99 ZO-8602200
474860	(1352150) 36" Shaft 50# Thrust 12 volt	\$309.99 ZO-3073200
474875	(1352156) 42" Shaft 55# Thrust 12 volt	\$339.99 ZO-5516200

LIMITED QUANTITIES

Minn Kota Endura Series Trolling Motor



- **Freshwater.**
- **Transom mount, hand control.**
- **Lever-Lock Bracket.**
- **Telescoping Tiller.**
- **5 Forward/3 Reverse Speed Settings.**
- **Power Prop.**
- **Indestructible Composite Shaft.**
- **Cool, Quiet Power.**
- **2-year warranty.**

Order No.	Mfg. No. / Description	List Price
474840	(1352250) 36" Shaft 50# Thrust 12 volt	\$247.99 ZO-9998100

LIMITED QUANTITIES

Minn Kota Endura Max Series Trolling Motors



- **Freshwater.**
- **Transom mount, hand control.**
- **Lever Lock Bracket:** This solid 10-position bracket features a quick-release lever lock and reinforced composite material that resists flexing, warping, and UV damage.
- **Telescoping Tiller:** Get easy, comfortable, intuitive operation of your trolling motor with the six-inch telescoping tiller including finite adjustment of forward and reverse speed settings.
- **Digital Maximizer:** Trolling motors equipped with Digital Maximizer provide up to 5 times longer run times on a single battery charge. These variable speed trolling motors let you dial in your exact speed, and they deliver only as much power as you need, helping to conserve your battery for a full day of fishing.
- **Push-To-Test Battery Meter:** Press a button on the trolling motor head to get an instant status of battery life you have left.
- **Power Prop.**
- **Indestructible Composite Shaft.**
- **Cool, Quiet Power.**

Order No.	Mfg. No. / Description	List Price
474877	(1352145M) 36" Shaft 45# Thrust 12 volt	\$267.59 CO-5472200
474879	(1352155M) 36" Shaft 55# Thrust 12 volt	\$305.79 CO-2995200
474881	(1352156M) 42" Shaft 55# Thrust 12 volt	\$315.39 CO-8086200

Minn Kota Endura Series Trolling Motors



- **Freshwater.**
- **Transom mount.**
- **Lever-Lock Bracket.**
- **Telescoping Tiller.**
- **5 Fwd/3 Rev Speed Settings:** Five speed settings for forward and three speed settings for reverse.
- **Push-to-Test Battery Meter.**
- **Power Prop.**
- **Indestructible Composite Shaft.**
- **Cool, Quiet Power.**

Order No.	Mfg. No. / Description	List Price
474831	(1352270M) 30" Shaft 30# Thrust 12 volt	\$135.19 CO-1941100
474833	(1352272M) 36" Shaft 40# Thrust 12 volt	\$193.19 CO-1246100
474836	(1352274M) 36" Shaft 50# Thrust 12 volt	\$241.49 CO-7250200
474837	(1352278) 42" Shaft 50# Thrust 12 volt	\$251.09 CO-3431200

SPECIAL HANDLING MAY APPLY



Minn Kota Riptide Instinct Series Trolling Motors - QUEST Series



- **Saltwater.**
- **Bow mount.**
- **QUEST Series:** These 24/36V dual-voltage brushless motors have been completely re-imagined from the ground up with updates to mounts, propellers, lift assist systems, drive motors and software - taking the world's greatest trolling motors and redesigning them to outperform everything else on the water for years to come.
- **Auto Stow & Deploy:** Stow or deploy Instinct just by pushing a button on your wireless remote, foot pedal, the One-Boat Network App or Humminbird fish finder.
- **Power Trim:** Trim Instinct up or down at the push of a button - on either the foot pedal, the wireless remote, the One-Boat Network App or a Humminbird fish finder. Adjust to changing fishing conditions without reaching down to your trolling motor.
- **Advanced GPS Trolling System:** The most-trusted navigation system in fishing. Instinct uses GPS to control your trolling motor with unrivaled features that keep you on the fish. Set Spot-Locks, record paths, control speed and steering, and more. Minn Kota makes boat positioning and control automatic, and you can take command from the easy-to-read LCD screen of Instinct's wireless remote.
- **Part of the One-Boat Network:** Out of the box, Minn Kota motors come standard with everything you need to connect to select Humminbird fish finders, unlocking more advanced navigation features without needing to remember additional adapters or complicated set-up procedures.
- **Spot-Lock with Jog:** Spot-Lock will hold you in place with unparalleled GPS accuracy. Spot-Lock gives you the power to stay right on top of any productive fishing spot, without touching your trolling motor. With the built-in heading sensor, you can use Jog to move your Spot-Lock location five feet in any direction.
- **Drift Mode** gives you point and shoot navigation for superior boat control in any direction, at any speed without the need of drift socks, kicker motors, or manual operation - even in the heaviest wind and current.
- **Real-time Battery Monitoring:** Check battery power levels while the motor is in use, real-time "time until empty" display monitor, with a notification when battery power is reduced to 20% to prompt users to enter "Eco-mode" which can reduce current draw to extend battery life.
- **Mobile App Compatibility:** Control your motor directly from your Apple or Android device with the One-Boat Network app. You get quick command of speed, steering, Spot-Lock and AutoPilot - plus the ability to update software.
- Digital Maximizer.
- Indestructible Composite Shaft.

Order No.	Mfg. No. / Description	List Price
4755984	(1358562) 87" Shaft 90/115# White	\$5,449.99 Z0-3420640
4755985	(1358582) 87" Shaft 90/115# Black	\$5,449.99 Z0-3420640
4755987	(1358563) 100" Shaft 90/115# White	\$6,099.99 Z0-3315150
4755989	(1358583) 100" Shaft 90/115# Black	\$6,099.99 Z0-3315150

MAP PRICE

Minn Kota Riptide Ultra Series Trolling Motors - Bluetooth



- **Saltwater.**
- **Bow mount.**
- **Auto Stow & Deploy:** Stow or deploy Ultra just by pushing a button on your i-Pilot or i-Pilot Link remote, foot pedal or Humminbird fish finder.
- **Power Steering.**
- **Power Trim:** Trim Ultra up or down at the push of a button - on either the foot pedal, the i-Pilot or i-Pilot Link remote or a Humminbird fish finder. Adjust to changing fishing conditions without reaching down to your trolling motor.
- **Spot-Lock with Jog:** Spot-Lock will hold you in place with unparalleled GPS accuracy. Available on i-Pilot GPS system that is pre-installed, Spot-Lock gives you the power to stay right on top of any productive fishing spot, without touching your trolling motor. With the included heading sensor, you can use Jog to move your Spot-Lock location five feet in any direction. Activate Spot-Lock from the i-Pilot remote or Humminbird fish finder.
- **Mobile App Compatibility:** Control i-Pilot directly from your Apple or Android device with our mobile app.
- **AutoPilot:** Automatically navigate your boat in any direction you choose. Just point the head of your trolling motor in the direction you want to travel, activate AutoPilot, and your trolling motor will keep you on that heading automatically, even correcting for wind, waves and current.
- Wireless Remote.
- Integrated Battery Meter.
- Digital Maximizer.
- Weedless Wedge 2 Prop.
- Indestructible Composite Shaft. Cool, Quiet Power.
- Advanced Corrosion Protection.
- Fully Encapsulated Electronics.
- Sacrificial Anode.
- 2-year warranty.

LIMITED QUANTITIES

i-PILOT GPS

- **i-Pilot GPS Trolling System:** The most-trusted GPS system in fishing. i-Pilot uses GPS to control your trolling motor with incredible features that keep you on the fish. Set Spot-Locks, record paths, control speed and steering, and more. i-Pilot makes boat positioning and control automatic, and you can take command from its easy-to-read large LCD screen.

Order No.	Mfg. No. / Description	List Price
4755938	(1358954) 72" Shaft 80# Thrust 24 volt	\$2,571.44 Z0-0709020

i-PILOT LINK GPS

- **i-Pilot Link Integrated GPS Trolling System:** i-Pilot Link gives you unprecedented control over your boat by linking your trolling motor to your Humminbird fish finder. Control your trolling motor from Link's color touch-screen remote or the Humminbird. You can set Spot-Locks, record paths, follow depth contours, automatically navigate to your favorite spots, control speed and steering, and more.

Order No.	Mfg. No. / Description	List Price
4755947	(1358959) 72" Shaft 80# Thrust 24 volt	\$3,030.63 Z0-3046420

Electronics

Trolling Motors

Instruments

Electrical

Lighting

Anchor & Dock

Safety

Steering, Controls

Pumps

Fuel System

Seating & Pedestals

Trailering

Tops & Covers

Perform.

Propellers

Engine & Care

Cleaning & Care

Paint & Paint Acc.

Fun & Flotation

Topside Acc.

Cockpit & Deck

Hardware, Fasteners

Camouflage

Misc.

Comm.

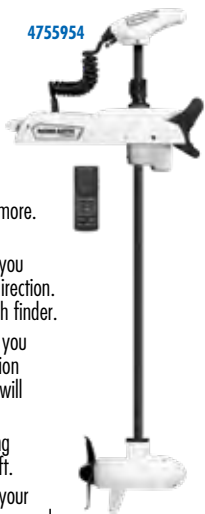
SPECIAL HANDLING MAY APPLY



Minn Kota Riptide Terrova Series Trolling Motors



4755954



- **Saltwater.**
- **Bow mount.**
- **Advanced GPS Trolling System:** Set Spot-Locks, record paths, control speed and steering, and more.
- **Spot-Lock with Jog:** Spot-Lock will hold you in place with unparalleled GPS accuracy. With the included heading sensor, you can use Jog to move your Spot-Lock location five feet in any direction. Activate Spot-Lock from the wireless remote or Humminbird fish finder.
- **AutoPilot:** Automatically navigate your boat in any direction you choose. Just point the head of your trolling motor in the direction you want to travel, activate AutoPilot, and your trolling motor will keep you on that heading automatically.
- **Push-to-Test Battery Meter:** Press a button on the trolling motor head to get an instant status of battery life you have left.
- **Mobile App Compatibility:** Control Terrova directly from your Apple or Android device with our mobile app. You get quick command of speed, steering, Spot-Lock and AutoPilot - plus the ability to update software.

MAP PRICE

Order No.	Mfg. No. / Description	List Price
4755930	(1363770) 54" Shaft 55# Thrust 12 volt	\$2,449.99 Z0-7855020
4755931	(1363771) 60" Shaft 55# Thrust 12 volt	\$2,499.99 Z0-4879020
4755943	(1363785) 54" Shaft 80# Thrust 24 volt	\$2,749.99 Z0-2670320
4755946	(1363786) 60" Shaft 80# Thrust 24 volt	\$2,799.99 Z0-7594320
4755948	(1363787) 72" Shaft 80# Thrust 24 volt	\$3,099.99 Z0-2310620
4755950	(1363790) 60" Shaft 112# Thrust 36 volt	\$2,999.99 Z0-0471520
4755952	(1363791) 72" Shaft 112# Thrust 36 volt	\$3,299.99 Z0-5196720
4755949	(1363792) 87" Shaft 112# Thrust 36 volt	\$3,899.99 Z0-3627230

QUEST SERIES - DUAL SPECTRUM CHIRP

- **QUEST Series:** These 24/36V dual-voltage brushless motors have been completely re-imagined from the ground up with updates to mounts, propellers, lift assist systems, drive motors and software - taking the world's greatest trolling motors and redesigning them to outperform everything else on the water for years to come.
- **Stow/Deploy Lever:** Press this lever on the mount and fall-away ramps will effortlessly slide your trolling motor into the water. And when you're ready to move, Auto Park helps the motor stow effortlessly by orienting the lower unit to the perfect stow position automatically.
- **Part of the One-Boat Network:** Out of the box, Minn Kota motors come standard with everything you need to connect to select Humminbird fish finders, unlocking more advanced navigation features without needing to remember additional adapters or complicated set-up procedures.
- **Drift mode** automatically engages speed and course control simultaneously, meaning anglers no longer need to depend on drift socks, kicker motors, or manual operation to control speed over water - even in the heaviest wind and current.
- **Real-time Battery Monitoring:** Check battery power levels while the motor is in use, real-time "time until empty" display monitor, with a notification when battery power is reduced to 20% to prompt users to enter "Eco-mode" which can reduce current draw to extend battery life.

WHITE COLOR VERSION

Order No.	Mfg. No. / Description	List Price
4755954	(1363900) 60" Shaft 90# (24v) / 115# (36v)	\$3,799.99 Z0-4564030
4755955	(1363901) 72" Shaft 90# (24v) / 115# (36v)	\$4,099.99 Z0-6078230
4755956	(1363902) 87" Shaft 90# (24v) / 115# (36v)	\$4,849.99 Z0-6388830
4755958	(1363903) 100" Shaft 90# (24v) / 115# (36v)	\$5,499.99 Z0-7490440

BLACK COLOR VERSION

Order No.	Mfg. No. / Description	List Price
4755909	(1363910) 60" Shaft 90# (24v) / 115# (36v)	\$3,799.99 Z0-4564030
4755944	(1363911) 72" Shaft 90# (24v) / 115# (36v)	\$4,099.99 Z0-6078230
4755914	(1363912) 87" Shaft 90# (24v) / 115# (36v)	\$4,849.99 Z0-6388830
4755911	(1363913) 100" Shaft 90# (24v) / 115# (36v)	\$5,499.99 Z0-7490440

Minn Kota Riptide Terrova Series Trolling Motors - Bluetooth



4755933



- **Saltwater.**
- **Bow mount.**
- **Lift-Assist Design:** A spring-loaded assembly on the Terrova mount makes stowing the trolling motor effortless, every time.
- **Stow/Deploy Lever:** Press this lever on the mount and fall away ramps will effortlessly slide your trolling motor into the water. And when you're ready to move, Lift-Assist helps the motor stow effortlessly.
- **Power Steering.**
- **Spot-Lock:** Just press a button, and Spot-Lock will hold you in place with unparalleled GPS accuracy. Available on i-Pilot GPS systems, Spot-Lock gives you the power to stay right on top of any productive fishing spot automatically, without touching your trolling motor.
- **AutoPilot:** Automatically navigate your boat in any direction you choose. Just point the head of your trolling motor in the direction you want to travel, activate AutoPilot, and your trolling motor will keep you on that heading automatically, even correcting for wind, waves and current.
- **Mobile App Compatibility:** Control i-Pilot directly from your Apple or Android device with our mobile app.
- **Push-to-Test Battery Meter:** Press a button to get an instant "stage of charge" reading.
- **Wireless Remote.**
- **Digital Maximizer.**
- **Weedless Wedge 2 Prop.**
- **Indestructible Composite Shaft. Cool, Quiet Power.**
- **2-year warranty.**

LIMITED QUANTITIES

i-PILOT GPS

- **i-Pilot GPS Trolling System:** The most-trusted GPS system in fishing. i-Pilot uses GPS to control your trolling motor with incredible features that keep you on the fish. Set Spot-Locks, record paths, control speed and steering, and more. i-Pilot makes boat positioning and control automatic, and you can take command from its easy-to-read large LCD screen.

Order No.	Mfg. No. / Description	List Price
4755922	(1363742) 72" Shaft 80# Thrust 24 volt	\$2,053.25 Z0-8396610

i-PILOT LINK GPS

- **i-Pilot Link Integrated GPS Trolling System:** i-Pilot Link gives you unprecedented control over your boat by linking your trolling motor to your Humminbird fish finder. Control your trolling motor from Link's color touch-screen remote or the Humminbird. You can set Spot-Locks, record paths, follow depth contours, automatically navigate to your favorite spots, control speed and steering, and more.

Order No.	Mfg. No. / Description	List Price
4755933	(1363746) 60" Shaft 80# Thrust 24 volt	\$2,235.76 Z0-7771810

SPECIAL HANDLING MAY APPLY



Electronics

Trolling Motors

Instruments

Electrical

Lighting

Anchor & Dock

Safety

Steering, Controls

Pumps

Fuel System

Seating & Pedestals

Trailering

Tops & Covers

Perform.

Propellers

Engine & Care

Cleaning & Care

Paint & Paint Acc.

Fun & Flotation

Topside Acc.

Cockpit & Deck

Hardware, Fasteners

Camouflage

Misc.

Comm.

Minn Kota Riptide PowerDrive Series Trolling Motors



4755913

- **Saltwater.**
- **Bow mount.**
- **Deploy-Assist Lever:** Get in and out of the water easily. Just depress the lever to deploy your trolling motor and when it's time to move, it stows easily and securely.
- **Advanced GPS Trolling System:** The most-trusted navigation system in fishing. Powerdrive uses GPS to control your trolling motor with unrivaled features that keep you on the fish. Set Spot-Locks, control speed and steering, and more. Minn Kota makes boat positioning and control automatic, and you can take command from the easy to read LCD screen of Powerdrive's wireless remote.
- **Push-to-Test Battery Meter:** Press a button to get an instant "stage of charge" reading.
- Digital Maximizer.
- Power Prop.
- Indestructible Composite Shaft.
- Advanced Corrosion Protection.

WIRELESS REMOTE

Order No.	Mfg. No. / Description	Thrust	Voltage	List Price	Part No.
4755913	(1363576) 54" Shaft	55#	12 volt	\$1,894.09	D0-7251510
4755916	(1363586) 54" Shaft	70#	24 volt	\$2,201.29	D0-3016710

MICRO REMOTE

Order No.	Mfg. No. / Description	Thrust	Voltage	List Price	Part No.
4755918	(1363575) 54" Shaft	55#	12 volt	\$1,648.39	D0-1781310
4755928	(1363585) 54" Shaft	70#	24 volt	\$1,955.49	D0-9346510

Minn Kota Riptide Transom Series Trolling Motors



475112

- **Saltwater.**
- **Transom mount, hand control.**
- Lever Lock Bracket.
- Push-to-Test Battery Meter.
- Advanced Corrosion Protection.
- Full Encapsulated Electronics.
- Sacrificial Anode.
- Indestructible Composite Shaft.
- Cool, Quiet Power.
- 2-year warranty.

VARIABLE SPEED CONTROL. DIGITAL MAXIMIZER

- **Tilt/Extend Tiller:** Take command of your hand control trolling motor with this versatile tiller, which both tilts (up to 45°) and extends (up to 6"), and features a digital battery indicator on the head.
- Digital Maximizer.
- Weedless Wedge 2 Prop.

Order No.	Mfg. No. / Description	Thrust	Voltage	List Price	Part No.
475112	(1363845) 36" Shaft	45#	12 volt	\$400.19	C0-6104300
475117	(1363856) 42" Shaft	55#	12 volt	\$570.29	C0-5748400
475108	(1363831) 42" Shaft	80#	24 volt	\$950.39	B0-5355800

5 FORWARD/3 REVERSE SPEED SETTINGS

- **Telescoping Tiller:** Get easy, comfortable, intuitive operation of your trolling motor with the six-inch telescoping tiller.
- **5 Fwd/3 Rev Speed Settings:** Five speed settings for forward and three speed settings for reverse.
- Power Prop.

Order No.	Mfg. No. / Description	Thrust	Voltage	List Price	Part No.
475114	(1363844) 36" Shaft	45#	12 volt	\$394.69	D0-5751300
475115	(1363854) 42" Shaft	55#	12 volt	\$586.39	D0-1196400

Minn Kota Riptide Fortrex Series Trolling Motors



- **Saltwater.**
- **Bow mount, hand control.**
- Lift-Assist Mount.
- Removable Bowguard 360°.
- Mono-Arm Design.
- Counter-Tension Stabilizer.
- Push-to-Test Battery Meter.
- **Tilt/Extend Tiller:** Take command of your hand control trolling motor with this versatile tiller, which both tilts (up to 45°) and extends (up to 6"), and features a digital battery indicator on the head.
- Digital Maximizer.
- Weedless Wedge 2 Prop.
- Indestructible Composite Shaft. Cool, Quiet Power.
- Advanced Corrosion Protection.
- Fully Encapsulated Electronics. Sacrificial Anode.
- 2-year warranty.

MAP PRICE

Order No.	Mfg. No. / Description	Thrust	Voltage	List Price	Part No.
475109	(1363640) 52" Shaft	80#	24 volt	\$1,549.99	Z0-4980310
475110	(1363641) 62" Shaft	80#	24 volt	\$1,599.99	Z0-6115310
475116	(1363660) 62" Shaft	112#	36 volt	\$1,699.99	Z0-1653410



SPECIAL HANDLING MAY APPLY



- Electronics
- Trolling Motors
- Instruments
- Electrical
- Lighting
- Anchor & Dock
- Safety
- Steering, Controls
- Pumps
- Fuel System
- Seating & Pedestals
- Trailering
- Tops & Covers
- Perform.
- Propellers
- Engine & Care
- Cleaning & Care
- Paint & Paint Acc.
- Fun & Flotation
- Topside Acc.
- Cockpit & Deck
- Hardware, Fasteners
- Camouflage
- Misc.
- Comm.

Electronics

Trolling Motors

Instruments

Electrical

Lighting

Anchor & Dock

Safety

Steering, Controls

Pumps

Fuel System

Seating & Pedestals

Trailering

Tops & Covers

Perform.

Propellers

Engine & Care

Cleaning & Care

Paint & Paint Acc.

Fun & Flotation

Topside Acc.

Cockpit & Deck

Hardware, Fasteners

Camouflage

Misc.

Comm.

Minn Kota Riptide Maxxum Series Trolling Motors



- **Saltwater.**
- **Bow mount, hand control.**
- **Tilt/Extend Tiller:** Take command of your hand control trolling motor with this versatile tiller, which both tilts (up to 45°) and extends (up to 6"), and features a digital battery indicator on the head.
- Push-to-Test Battery Meter.
- Quick-Lock Cam Depth Adjuster.
- Weedless Wedge 2 Prop.
- Indestructible Composite Shaft.
- Cool, Quiet Power.
- Advanced Corrosion Protection.
- Fully Encapsulated Electronics.
- Sacrificial Anode.
- 2-year warranty.

VARIABLE SPEED CONTROL LATCH & DOOR BRACKET

- **Latch & Door Bracket:** This bracket gives you a rock-solid hold while stowing your trolling motor & makes for easy removal at the end of the day.
- Variable Speed Control.
- Digital Maximizer.

Order No.	Mfg. No. / Description	List Price
475118	(1363447) 52" Shaft 80# Thrust 24 volt	\$1,322.09 C0-8732110

VARIABLE SPEED CONTROL BOWGUARD 360° BREAKAWAY MOUNT

- **Bowguard 360° Breakaway Mount:** Breaks away on impact, then automatically resets itself, giving you uninterrupted fishing and an extra safeguard from damaging your trolling motor or boat. It even detaches for added convenience.
- Variable Speed Control.
- Digital Maximizer.

Order No.	Mfg. No. / Description	List Price
475119	(1363445) 52" Shaft 80# Thrust 24 volt	\$1,371.09 C0-3456110
475120	(1363446) 62" Shaft 80# Thrust 24 volt	\$1,419.99 C0-9960210

5 FWD/3 REV SPEED SETTINGS. LATCH & DOOR BRACKET

- **Latch & Door Bracket:** This bracket gives you a rock-solid hold while stowing your trolling motor & makes for easy removal at the end of the day.
- **5 Fwd/3 Rev Speed Settings:** Five speed settings for forward and three speed settings for reverse.

Order No.	Mfg. No. / Description	List Price
475041	(1363420) 42" Shaft 55# Thrust 12 volt	\$950.09 D0-7006700
475043	(1363421) 52" Shaft 55# Thrust 12 volt	\$1,005.89 D0-1740800
475071	(1363425) 52" Shaft 70# Thrust 24 volt	\$1,016.29 D0-3031800

Minn Kota i-Pilot Link Charging Cable



- This spare or replacement charging cable features a USB adapter that lets you choose between AC and DC power (AC and DC adapters not included).
- Cable length: 5'.
- Compatible with all i-Pilot Link systems.

Order No.	Mfg. No. / Description	List Price
477027	(1866460)	\$32.09 D0-7652000

Minn Kota i-Pilot Link Remote - Bluetooth



- Can be paired with multiple wireless remotes.
- Add extra remotes to your setup for added flexibility.
- The remote's customizable, touchscreen display shows your current function, user menus, GPS signal strength, prop status and battery state.
- Powered by a rechargeable battery and the remote is waterproof.
- Controls Auto Stow/Deploy and Power Trim with Ulterra models.
- Compatible only with Bluetooth-enabled i-Pilot Link systems.

Order No.	Mfg. No. / Description	List Price
477029	(1866650)	\$345.89 D0-1767200

Minn Kota i-Pilot Remote - Bluetooth



- The i-Pilot GPS system can be paired with multiple wireless remotes.
- Add extra remotes to your setup for increased flexibility.
- Compact and waterproof, this new remote features a larger LCD screen, ergonomic buttons and an easy-access battery compartment.
- Provides instant feedback on active functions, speed, prop on/off status, battery power and GPS signal strength.
- Controls Auto Stow/Deploy and Power Trim with Ulterra models.
- Compatible only with Bluetooth-enabled i-Pilot systems.

Order No.	Mfg. No. / Description	List Price
477040	(1866550)	\$190.09 D0-7025100

Minn Kota i-Pilot Remote - Legacy



- Features an LCD screen and ergonomic buttons to control active functions, speed, prop on/off status, battery power and GPS signal strength.
- Compact, waterproof, floats and has an easy-access battery compartment.
- i-Pilot Systems can learn multiple remotes for increase flexibility.
- Compatible with non-Bluetooth i-Pilot systems that have been manufactured in 2016 or earlier.

Order No.	Mfg. No. / Description	List Price
477038	(1866350)	\$169.09 D0-7253100

LIMITED QUANTITIES

SPECIAL HANDLING MAY APPLY



Minn Kota Micro Remote - Bluetooth

MINN KOTA

Bluetooth



- Minn Kota trolling motors can learn multiple remotes - so you can use your standard remote and Micro Remote together.
- Compatible only with Bluetooth-enabled Minn Kota navigation systems manufactured after 2017.
- Waterproof.
- Remote is powered by one replaceable CR2450 coin cell lithium battery.
- Includes neck lanyard.

Order No.	Mfg. No. / Description	List Price	
476723	(1866561)	\$112.09	D0-7698000

Minn Kota GPS Navigation Remote Cradle

MINN KOTA



- Secures Advanced GPS Navigation Wireless Remote to belt with included belt clip or direct to console.
- Compatible only with Advanced GPS Navigation system remotes.
- HOLDING CRADLE ONLY. Remote sold separately.

Order No.	Mfg. No. / Description	List Price	
476727	(1866675)	\$35.69	D0-5582000

Minn Kota CoPilot Remote

MINN KOTA



- For PowerDrive V2, PowerDrive and Riptide SP motors with the CoPilot system (sold separately) installed.
- This replacement wireless remote gives you control of steering, speed and prop on/off from anywhere on the boat.
- System is programmable to allow multiple CoPilot remotes to be "learned" (up to 10 total, sold separately).

Order No.	Mfg. No. / Description	List Price	
476721	(1866120)	\$60.09	D0-7084000

LIMITED QUANTITIES

Minn Kota CoPilot Accessory for PowerDrive Series

- Wireless system allows you to control speed, steering and prop on/off on your PowerDrive trolling motor.
- It installs easily with plug-n-play design located inside the side plate of the trolling motor mount.
- A plug is also included, allowing a corded foot pedal to be used in conjunction with CoPilot.
- Compatible with PowerDrive trolling motors model year 2017 and after.

Order No.	Mfg. No. / Description	List Price	
4740053	(1866155)	\$172.39	D0-1973100
476721	(1866120) CoPilot Remote	\$60.09	D0-7084000

LIMITED QUANTITIES

Minn Kota GPS Navigation Wireless Remote

MINN KOTA



- The Advanced GPS Navigation system can be paired with multiple remotes. Add extra remotes to your setup for increased flexibility.
- Features four programmable One-Boat Network buttons.
- Compatible with Bluetooth-enabled Advanced GPS Navigation systems only.
- Waterproof and lightweight.
- Wireless Remote is powered by 2 AA batteries (included).
- Lanyard and carabiner are included.

Order No.	Mfg. No. / Description	List Price	
476725	(1866655)	\$305.69	D0-5544200

Minn Kota Trolling Motor Remote Power Switch

MINN KOTA



- Allows for power on/off functionality of selected motors via remote mounted rocker switch.
- Interchangeable white and black switch covers included for all mounting applications.
- Dimmable LED backlight indicates switch position.
- 30' lead length.
- Compatible with Quest Series Ulterra, Terrova, Riptide Terrova and Riptide Instinct motors.

Order No.	Mfg. No. / Description	List Price	
476729	(1865130)	\$109.79	D0-3878000

Minn Kota CoPilot Accessory for PowerDrive V2 Series - Legacy

MINN KOTA



- Wireless system allows you to control speed, steering and prop on/off on your PowerDrive V2 trolling motor.
- It installs easily with plug-n-play design and a receiver that attaches to the right side plate of the trolling motor mount.
- A plug is also included, allowing a corded foot pedal to be used in conjunction with CoPilot.
- Compatible with legacy PowerDrive V2 bow mount trolling motors manufactured in 2016 or earlier.

Order No.	Mfg. No. / Description	List Price	
4740051	(1866150)	\$172.39	D0-1973100
476721	(1866120) CoPilot Remote	\$60.09	D0-7084000

LIMITED QUANTITIES

MINN KOTA



Order No.	Mfg. No. / Description	List Price	
4740053	(1866155)	\$172.39	D0-1973100
476721	(1866120) CoPilot Remote	\$60.09	D0-7084000

LIMITED QUANTITIES

Electronics

Trolling Motors

Instruments

Electrical

Lighting

Anchor & Dock

Safety

Steering, Controls

Pumps

Fuel System

Seating & Pedestals

Trailering

Tops & Covers

Perform.

Propellers

Engine & Care

Cleaning & Care

Paint & Paint Acc.

Fun & Flotation

Topside Acc.

Cockpit & Deck

Hardware, Fasteners

Camouflage

Misc.

Comm.

Minn Kota Foot Pedal-Corded - Riptide Instinct/Ultrera Quest



- One-Boat Network programmable ON/OFF button with LED indicator.
- Low-profile, waterproof design.
- Heel/toe pedal and left/right steering options.
- Spot-Lock ON/OFF button with LED indicator.
- AutoPilot ON/OFF button with LED indicator.
- Momentary/Constant ON button with LED indicator.
- Rotary speed control dial.
- 18' cable with waterproof connector plug.
- Works in conjunction with Advanced GPS Navigation remote control and Remote Power Switch / MKA-30.
- Compatible with QUEST series RT Instinct and Ultrera.

Order No.	Mfg. No. / Description	List Price	
477010	(1866082) MKA-58	\$234.39	D0-1578100

Minn Kota Foot Pedal-Corded - Terrova/Riptide Terrova Quest



- One-Boat Network programmable ON/OFF button with LED indicator to stow and deploy shallow water anchors, mark a waypoint or engage autopilot.
- Low-profile, waterproof design.
- Heel/toe pedal and left/right steering options.
- Spot-Lock ON/OFF button with LED indicator.
- Momentary/Constant ON button with LED indicator.
- Rotary speed control dial.
- 18' cable with waterproof connector plug.
- Compatible with Terrova or Riptide Terrova QUEST motors.

Order No.	Mfg. No. / Description	List Price	
477014	(1866078) MKA-58	\$234.39	D0-1578100

Minn Kota Foot Pedal-Corded - Ultrera/Riptide Ultrera



- Spot-Lock ON/OFF button with LED indicator.
- Low-profile, waterproof design.
- Heel/toe pedal and left/right steering options.
- AutoPilot ON/OFF button with LED indicator.
- Momentary/Constant ON button with LED indicator.
- Rotary speed control dial.
- 18' cable with waterproof connector plug.
- Works in conjunction with i-Pilot and i-Pilot Link and new GPS navigation systems.
- Compatible with Ultrera and Riptide Ultrera trolling motors model year 2017 and after.

Order No.	Mfg. No. / Description	List Price	
477008	(1866081) MKA-58	\$234.39	D0-1578100

Minn Kota Foot Pedal-Corded - Terrova/Riptide Terrova



- Spot-Lock ON/OFF button with LED indicator.
- Low-profile, waterproof design.
- Heel/toe pedal and left/right steering options.
- AutoPilot ON/OFF button with LED indicator.
- Momentary/Constant ON button with LED indicator.
- 18' cable with waterproof connector plug.
- Plug-n-play with Terrova or Riptide Terrova motors, and works in conjunction with CoPilot, i-Pilot and i-Pilot Link and new GPS navigation systems.
- Compatible with Terrova and Riptide Terrova trolling motors model year 2017 and after.

Order No.	Mfg. No. / Description	List Price	
477006	(1866077) MKA-58	\$234.39	D0-1578100

Minn Kota Corded Foot Pedal for PowerDrive/Riptide PowerDrive Series



- Side-to-side steering control.
- Momentary/constant "On" switch.
- Speed control knob for precise adjustments.
- Includes 18' cord with waterproof connector
- Compatible with PowerDrive, PowerDrive V2, Riptide PowerDrive and Riptide SP trolling motors manufactured in 2007 and after.

Order No.	Mfg. No. / Description	List Price	
476998	(1866070)	\$110.09	D0-7088000

Minn Kota DSC Adapter Cables



- Connects fish finders with a Built-In Dual Spectrum CHIRP transducer.
- Shielded cable for crystal-clear sonar performance.
- Waterproof heavy-duty composite connector.
- Compatible with 2D sonar only.

Order No.	Mfg. No. / Description	List Price	
2251971	(1852077) MKR-DSC-10 Lowrance 7-Pin	\$35.09	D0-7082000
477018	(1852079) MKR-DSC-16 Lowrance 9-Pin	\$35.69	D0-5582000
477019	(1852081) MKR-DSC-12 Garmin 4-Pin	\$35.69	D0-5582000
477021	(1852082) MKR-DSC-14 Garmin 8-Pin	\$35.69	D0-5582000

- Electronics
- Trolling Motors
- Instruments
- Electrical
- Lighting
- Anchor & Dock
- Safety
- Steering, Controls
- Pumps
- Fuel System
- Seating & Pedestals
- Trailering
- Tops & Covers
- Perform.
- Propellers
- Engine & Care
- Cleaning & Care
- Paint & Paint Acc.
- Fun & Flotation
- Topside Acc.
- Cockpit & Deck
- Hardware, Fasteners
- Camouflage
- Misc.
- Comm.

Minn Kota Universal Sonar 2 Adapter Cables



- Delivers advanced water temperature sensing for the best view of the waters below.
- Adapter connects your fishfinder with a Universal Sonar 2 transducer on your trolling motor.
- Shielded, IP68-rated waterproof connectors are metal tipped to prevent sonar interference.

Order No.	Mfg. No. / Description	List Price
476566	(1852068) MKR-US2-8 Humminbird 7-pin	\$39.79 D0-3813000
476568	(1852060) MKR-US2-10 Lowrance/Eagle Blue	\$40.09 D0-7023000
7000981	(1852072) MKR-US2-12 Garmin Echo	\$40.09 D0-7023000
7000976	(1852073) MKR-US2-13 Humminbird ONIX	\$68.09 D0-7445000
7000977	(1852074) MKR-US2-14 Garmin 8-pin	\$40.09 D0-7023000
477007	(1852075) MKR-US2-15 Lowrance Hook2	\$40.09 D0-7023000
477009	(1852076) MKR-US2-16 Lowrance Elite Ti2/HDS	\$40.09 D0-7023000

Humminbird MEGA Live TargetLock and MEGA 360 Ultrex Accessory Mount



- This accessory mount is used to increase the effect of lift assist for anglers who choose to mount both Humminbird Mega Live Imaging TargetLock and Mega 360 Imaging to their trolling motor.
- Reduces effort required for motor stow and deploy.
- The bracket serves as a direct replacement for the existing Ultrex bracket.

LIMITED QUANTITIES

FOR 24 VOLT ULTREX MOTORS WITH A SHAFT LENGTH OF 45"

Order No.	Mfg. No. / Description	List Price
404049	(1854080)	\$408.59 C0-0374300

FOR 24 OR 36 VOLT ULTREX MOTORS WITH A SHAFT LENGTH OF 52"

Order No.	Mfg. No. / Description	List Price
404051	(1854081)	\$408.59 C0-0374300

FOR 36 VOLT ULTREX MOTORS WITH A SHAFT LENGTH OF 45"

Order No.	Mfg. No. / Description	List Price
404053	(1854082)	\$408.59 C0-0374300

Minn Kota Built-in MEGA Down Imaging Adapter Cable (MKR-MDI-2)



- Connects your Humminbird HELIX fish finder to a Minn Kota Motor equipped with Built-In MEGA Down Imaging.
- Shielded cable for crystal-clear MEGA Down Imaging sonar performance.
- Adapter not required for SOLIX models.
- For HELIX 7 Models.



Order No.	Mfg. No. / Description	List Price
402997	(1852086)	\$29.29 D0-3432000

Minn Kota MEGA Imaging Adapter Cable (MKR-MI-1)



- Adapter connects your Humminbird HELIX 8, 9, 10 or 12 fish finder with a built-in MEGA Side or Down Imaging transducer on your trolling motor.
- Shielded cable for crystal-clear MEGA Down Imaging sonar performance.
- Compatible with HELIX.
- Adapter not required for SOLIX models.



Order No.	Mfg. No. / Description	List Price
476570	(1852088)	\$35.09 D0-7082000

Minn Kota US2 Ferrite Ring



- Trolling motor manufacturers are able to produce a more efficient trolling motor relative to power management. In doing so, the motors sometimes introduce electrical noise into other electronics on the boat.
- For reducing electronic interference.
- For transducer cable installation.



Order No.	Mfg. No. / Description	List Price
2259904	(470085-1)	\$8.89 D0-1170000

Minn Kota Universal Sonar 2 Extension Cable (MKR-US2-11)



- Extension cable allows for an additional 14-1/2' of length to your US2 adapter cables that connect your fishfinder with a US2 transducer on your trolling motor.
- Waterproof construction.



Order No.	Mfg. No. / Description	List Price
477011	(1852080)	\$49.09 D0-7293000

- Electronics
- Trolling Motors**
- Instruments
- Electrical
- Lighting
- Anchor & Dock
- Safety
- Steering, Controls
- Pumps
- Fuel System
- Seating & Pedestals
- Trailer
- Tops & Covers
- Perform.
- Propellers
- Engine & Care
- Cleaning & Care
- Paint & Paint Acc.
- Fun & Flotation
- Topside Acc.
- Cockpit & Deck
- Hardware, Fasteners
- Camouflage
- Misc.
- Comm.

- Electronics
- Trolling Motors**
- Instruments
- Electrical
- Lighting
- Anchor & Dock
- Safety
- Steering, Controls
- Pumps
- Fuel System
- Seating & Pedestals
- Trailering
- Tops & Covers
- Perform.
- Propellers
- Engine & Care
- Cleaning & Care
- Paint & Paint Acc.
- Fun & Flotation
- Topside Acc.
- Cockpit & Deck
- Hardware, Fasteners
- Camouflage
- Misc.
- Comm.

Humminbird 360 Imaging

If the front of your boat is your prime fishing turf, mount up. This 360 Imaging bow-mount accessory gives you a 360-degree, detail-rich view of the water-with you standing literally in the middle of your sonar return as you troll.

Humminbird MEGA 360 Imaging - Universal



- Compatible with Minn Kota's HELIX and SOLIX trolling motors.
- The high-frequency beam of MEGA Imaging CHIRPs across the megahertz range to reveal the world below in picture-like detail all the way around your boat.
- Use MEGA 360 Imaging without sacrificing boat control. Whether trolling or using Spot-Lock, MEGA 360 Imaging is independently mounted, so your sonar picture remains unchanged as the trolling motor turns.
- Pick from two operation modes for this transducer; MEGA 360 Imaging or Side Imaging.
- View MEGA 360 Imaging alongside your choice of multiple sonar and map technologies for a complete understanding of your surroundings.
- Transducer shaft length: 50".
- Mounting bracket material: CNC-machined billet aluminum.
- Once connected to a compatible HELIX G3N unit with MEGA Imaging+ or SOLIX G2 unit, MEGA 360 Imaging view can be shared with All SOLIX models, and all HELIX G2N and G3N models when connected via an Ethernet network.
- Includes: MEGA 360 Imaging transducer with attached power cable and transducer cable, 10' SOLIX transducer extension cable, 10' HELIX transducer adapter cable, 10' MEGA 360 power cable and adjustable, aluminum MEGA 360 Imaging mounting bracket with depth retaining ring for shaft.



Order No. Mfg. No. / Description List Price
404039 (411390-1) **\$1,598.79** Z0-5193110

Humminbird MEGA 360 Imaging - Fortrex



- Compatible with Minn Kota's HELIX and SOLIX trolling motors.
- For use only on Minn Kota's Fortrex bow mount trolling motors.
- The high-frequency beam of MEGA Imaging CHIRPs across the megahertz range to reveal the world below in picture-like detail all the way around your boat.
- Use MEGA 360 Imaging without sacrificing boat control. Whether trolling or using Spot-Lock, MEGA 360 Imaging is independently mounted, so your sonar picture remains unchanged as the trolling motor turns.
- Pick from two operation modes for this transducer; MEGA 360 Imaging or Side Imaging.
- View MEGA 360 Imaging alongside your choice of multiple sonar and map technologies for a complete understanding of your surroundings.
- Transducer shaft length: 27".
- Mounting bracket material: Anodized aluminum.
- Includes: Fortrex bow-mount MEGA 360 Imaging transducer with attached power cable and transducer cable, with 10' SOLIX transducer cable, 10' HELIX transducer adapter cable, 10' MEGA 360 power cable and an easy to mount MEGA 360 Imaging - Fortrex mounting bracket. (Minn Kota Fortrex trolling motor sold separately).



Order No. Mfg. No. / Description List Price
404034 (411260-1) **\$1,298.99** Z0-6552900

Humminbird MEGA 360 Imaging - Ultrex



- Compatible with Minn Kota's HELIX and SOLIX trolling motors.
- For use only on Minn Kota's Ultrex bow mount trolling motor.
- The high-frequency beam of MEGA Imaging CHIRPs across the megahertz range to reveal the world below in picture-like detail all the way around your boat.
- Use MEGA 360 Imaging without sacrificing boat control. Whether trolling or using Spot-Lock, MEGA 360 Imaging is independently mounted, so your sonar picture remains unchanged as the trolling motor turns.
- Pick from two operation modes for this transducer; MEGA 360 Imaging or Side Imaging.
- View MEGA 360 Imaging alongside your choice of multiple sonar and map technologies for a complete understanding of your surroundings.
- Transducer shaft length: 39".
- Mounting bracket material: Anodized aluminum.
- Includes: Ultrex bow mount MEGA 360 Imaging transducer with attached power cable and transducer cable, with 10' SOLIX transducer cable, 10' HELIX transducer adapter cable, 10' MEGA 360 power cable and an easy to mount MEGA 360 Imaging - Ultrex mounting bracket. (Minn Kota Ultrex trolling motor sold separately).



Order No. Mfg. No. / Description List Price
404037 (411250-1) **\$1,299.99** Z0-6552900

MAP PRICE
LIMITED QUANTITIES

Humminbird MEGA 360 Imaging - Ultrex



- Compatible with HELIX models.
- Compatible with all APEX models and all SOLIX G2 and G3 models.
- The high-frequency beam of MEGA Imaging CHIRPs across the megahertz range to reveal the world below in picture-like detail all the way around your boat.
- Use MEGA 360 Imaging without sacrificing boat control. Whether trolling or using Spot-Lock, MEGA 360 Imaging is independently mounted, so your sonar picture remains unchanged as the trolling motor turns.
- Pick from two operation modes for this transducer; MEGA 360 Imaging or Side Imaging.
- View MEGA 360 Imaging alongside your choice of multiple sonar and map technologies for a complete understanding of your surroundings.
- Transducer shaft length: 39".
- Mounting bracket material: Anodized aluminum.
- Includes: Ultrex bow-mount MEGA 360 Imaging transducer with attached power cable and transducer cable, with 10' SOLIX transducer cable, 10' HELIX transducer adapter cable, 10' MEGA 360 power cable and an easy to mount MEGA 360 Imaging - Ultrex mounting bracket.



Order No. Mfg. No. / Description List Price
404040 (411830-1) **\$1,298.99** Z0-6552900

Humminbird MEGA 360 Imaging - No Mount



- The MEGA 360 Imaging - No Mount is a MEGA 360 Imaging transducer with a 50" shaft that provides a 360 degree, detail-rich view all around you, for a better understanding of where to find fish and structure.
- This model allows you to choose your own mounting solution, providing endless opportunities for how and where you can use the fish-catching power of MEGA 360 Imaging.



Order No. Mfg. No. / Description List Price
3580154 (411580-1) **\$1,412.99** D0-9303110

Minn Kota Quick Release Brackets (Composite)

- Super tough and super secure.
- Made with high-yield composite material, these brackets are impervious to corrosion and feature a low-profile design that leaves the deck clear when the motor is removed.

- Plus, a locking handle with stainless steel pins can be secured with padlock (padlock not included).

Ultra (Quest)	RTA-55	MKA-56							
Ultra			MKA-64		MKA-21				
Terrova (Quest)	RTA-55	MKA-56							
Terrova			MKA-64		MKA-21				
Ultrax				MKA-23††					
PowerDrive V2			MKA-64		MKA-21				
PowerDrive			MKA-64		MKA-21				
PowerDrive Pontoon			MKA-64		MKA-21				
Fortrex				MKA-23††					
Maxxum				MKA-23††					
Edge				MKA-23††					
Riptide Instinct (Quest)	RTA-55	MKA-56							
Riptide Ultra						RTA-54*			
Riptide Terrova (Quest)	RTA-55	MKA-56							
Riptide Terrova			MKA-64				RTA-17	RTA-62	
Riptide PowerDrive							RTA-17	RTA-62	
Riptide Fortrex									RTA-19
Riptide Maxxum									RTA-19
Riptide Edge									RTA-19

* For higher-thrust motors with 72" shafts, opt for the MKA-53 or RTA-54 bracket.
 †† Not designed for motors larger than 80 pounds of thrust and 60" shafts.



477012



476667



476639



476635

Order No.	Mfg. No. / Description	List Price	
477012	(1854021) MKA-21	\$89.49	D0-9517000
2259164	(1854027) MKA-21 (Bulk)	\$990.99	D0-9729700
476635	(1854023) MKA-23	\$109.39	D0-1578000
476667	(1854017) RTA-17 (Sold Each)	\$90.09	D0-7027000
476665	(1854012) RTA-17 (Sold 12 Per Bulk)	\$83.09	D0-7466000
476630	(1854019) RTA-19	\$109.39	D0-1578000

QUEST TECHNOLOGY			
Order No.	Mfg. No. / Description	List Price	
476633	(1854055) RTA-55	\$400.19	D0-5102300
476634	(1854056) MKA-56	\$345.79	D0-3667200
476636	(1854062) RTA-62 (Sold Each)	\$205.99	D0-9746100
476638	(1854063) RTA-62 (Sold 12 Per Bulk)	\$212.39	D0-1996100
476644	(1854064) MKA-64	\$230.09	D0-7048100

Minn Kota Quick Release Brackets (Aluminum)



- A cam-lock design and ultra-tight tolerances eliminate bracket movement and noise.
- The locking lever includes a pin and lanyard.
- The upper and lower plates can be secured with a padlock (padlock not included).

Ultra (Quest)	MKA-57				MKA-58†††	
Ultra			MKA-32*	MKA-51††	MKA-16-03	
Terrova			MKA-32*	MKA-51††	MKA-16-03	
Ultrax (Quest)		MKA-61†	MKA-62†			
Ultrax		MKA-61†	MKA-62†			
PowerDrive V2			MKA-32*	MKA-51††	MKA-16-03	
PowerDrive			MKA-32*	MKA-51††	MKA-16-03	
PowerDrive Pontoon			MKA-32*	MKA-51††	MKA-16-03	
Fortrex		MKA-61†	MKA-62†			
Maxxum		MKA-61†	MKA-62†			
Riptide Instinct (Quest)	MKA-57				MKA-58†††	
Riptide Terrova (Quest)	MKA-57				MKA-58†††	

* MKA-32 includes a composite cover to keep the deck clean when the motor is removed.
 † MKA-42 fits 45" and shorter foot control motors and 52" and shorter hand control models. MKA-52/62 fits 52"-72" shaft foot control motors and 62" shaft hand control motors.
 †† MKA-51 can slide back 6" for easy storage and security.
 ††† Compatible with Electric-Steer QUEST motors only.

Order No.	Mfg. No. / Description	List Price	
7000982	(1854060) MKA-32	\$160.09	D0-7082100
476637	(1854051) MKA-51	\$270.09	D0-7061200
476595	(1854035) MKA-16-03	\$69.59	D0-7655000
2252179	(1854036) MKA-16-03 (Bulk)	\$770.69	D0-5561600

QUEST TECHNOLOGY			
Order No.	Mfg. No. / Description	List Price	
476628	(1854057) MKA-57	\$500.19	D0-5100400
476640	(1862042) MKA-61	\$200.09	D0-7006100
476642	(1862052) MKA-62	\$220.09	D0-7067100

- Electronics
- Trolling Motors
- Instruments
- Electrical
- Lighting
- Anchor & Dock
- Safety
- Steering, Controls
- Pumps
- Fuel System
- Seating & Pedestals
- Trailer
- Tops & Covers
- Perform.
- Propellers
- Engine & Care
- Cleaning & Care
- Paint & Paint Acc.
- Fun & Flotation
- Topside Acc.
- Cockpit & Deck
- Hardware, Fasteners
- Camouflage
- Misc.
- Comm.

Minn Kota Boat Deck Reinforcement Kit



Order No. **476629** Mfg. No. / Description (1854058) MKA-58 List Price **\$269.39** D0-1551200

- Provides additional strength and stability for mounting Minn Kota Quest series trolling motors.
- For use with: Ultrax Quest, Terrova Quest, Ultrera Quest, Riptide Instinct Quest and Riptide Terrova Quest.
- Helps to distribute torque loads associated with higher thrust motors.
- Can be installed directly to boat deck or in combination with MKA-56 / RTA-55 quick release bracket.
- Multiple mounting hole patterns allow for flexible installation.
- Includes stainless steel hardware.

Minn Kota Weedless Wedge 2 Propellers



- This 100% weedless prop features a unique, patented design with swept-back and flared blades that "wedge" weeds away while conserving battery power.
- It helps you move through heavy vegetation - even at slow speeds.
- Includes prop nut, pin and washer.

MKP-32 - WEEDLESS WEDGE 2 PROPELLER

- Fits 3-5/8" lower unit diameter.
- For use with 1.06" prop/drive pin. Prop nut thread: 5/16"-24.

Order No. **476286** Mfg. No. / Description (1865017) List Price **\$31.89** D0-1552000

MKP-33 - WEEDLESS WEDGE 2 PROPELLER

- Fits 4" lower unit diameter.
- For use with 1" x 3/16" prop/drive pin. Prop nut thread: 3/8"-24.

Order No. **476287** Mfg. No. / Description (1865018) List Price **\$49.09** D0-7293000

MKP-38 - WEEDLESS WEDGE 2 PROPELLER

- Fits 4-1/2" lower unit diameter.
- For use with 1" x 3/16" prop/drive pin. Prop nut thread: 3/8"-24.

Order No. **476427** Mfg. No. / Description (1865023) List Price **\$49.09** D0-7293000

Minn Kota Power Propellers



- Delivers extra power to push through heavy vegetation.
- Includes prop pin, nut and washer.

MKP-2 - POWER PROPELLER

- Fits 3-1/4" lower unit diameter.
- For use with 1.06" prop/drive pin. Prop nut thread: 5/16"-24.

Order No. **476223** Mfg. No. / Description (1865002) List Price **\$17.09** D0-7631000

MKP-40 - POWER PROPELLER

- Designed to work exclusively with QUEST Series motors.
- Fits 4-1/2" QUEST Series lower units.
- For use with 1" x 3/16" prop/drive pin. Prop nut thread: 3/8"-24.

Order No. **476291** Mfg. No. / Description (1865040) List Price **\$50.99** D0-9704000

Minn Kota Prop Nut Kits



- Each kit includes a prop nut and washer.
- A crescent wrench is required for installation.

Order No.	Mfg. No. / Description	List Price	D0-Code
476297	(1865010) MKP-9 "A"	\$9.09	D0-7270000
477016	(1865011) MKP-10 "B"	\$9.09	D0-7270000
477017	(1865014) MKP-23 "D"	\$9.09	D0-7270000
476292	(1865019) MKP-34 "E"	\$9.09	D0-7270000

Minn Kota Weedless Wedge Propellers



- This 100% weedless prop is designed to push weeds away and conserve battery power.
- Even at slow speeds, it powers through heavy vegetation or cover.
- Includes prop nut, pin and washer.

MKP-6 - WEEDLESS WEDGE PROPELLER

- Fits 3-1/4" lower unit diameter.
- For use with 1.06" prop/drive pin. Prop nut thread: 5/16"-24.

Order No. **476261** Mfg. No. / Description (1865003) List Price **\$22.09** D0-7671000

MKP-7 - WEEDLESS WEDGE PROPELLER

- Fits 3-5/8" lower unit diameter.
- For use with 1.06" prop/drive pin. Prop nut thread: 5/16"-24.

Order No. **476273** Mfg. No. / Description (1865006) List Price **\$32.09** D0-7652000

MKP-39 - WEEDLESS WEDGE PROPELLER

- Designed to work exclusively with QUEST Series motors.
- Fits 4-1/2" QUEST Series lower units.
- For use with 1" x 3/16" prop/drive pin. Prop nut thread: 3/8"-24.

Order No. **476289** Mfg. No. / Description (1865039) List Price **\$50.99** D0-9704000

MotorGuide Katana Propeller



- Standard on new cable steer models starting in 2020 or easily repower any existing MotorGuide trolling motor with a 3.5" hub.
- The Katana two-blade weedless prop combines NASA's hydrofoil design and Mercury Outboard Propeller's industry-leading technology for the most powerful and efficient trolling motor prop on the market.
- 10.25" diameter, constructed of engineered polymer.
- 2 blade.
- 3-1/2" hub.

Order No. **502048** Mfg. No. / Description (8M4004173) List Price **\$55.89** F0-2193000

MotorGuide Machete III Propeller



- Runs quiet and is the ultimate shallow-water performer.
- 3 blade.
- 3-1/2" hub.

Order No. **501055** Mfg. No. / Description (MGA089G) List Price **\$52.19** F0-3563000



RAPTOR

IS RELENTLESS



RAPTOR
SHALLOW WATER ANCHOR

INTRODUCING AN ALL-NEW KIND OF SHALLOW WATER ANCHOR

It senses the bottom and delivers the perfect hold. It knows when wind and waves threaten to knock you off your spot, and re-anchors automatically. It's built to last, built to fight and built to keep you in the game until you get what you came for. This is Raptor. And it's only from Minn Kota.

minnkotamotors.com/Raptor

- Electronics
- Trolling Motors**
- Instruments
- Electrical
- Lighting
- Anchor & Dock
- Safety
- Steering, Controls
- Pumps
- Fuel System
- Seating & Pedestals
- Trailering
- Tops & Covers
- Perform.
- Propellers
- Engine & Care
- Cleaning & Care
- Paint & Paint Acc.
- Fun & Flotation
- Topside Acc.
- Cockpit & Deck
- Hardware, Fasteners
- Camouflage
- Misc.
- Comm.

Minn Kota Raptor Shallow Water Anchors



- **Active Anchoring:** This revolutionary anchoring technology continuously monitors anchoring force and adjusts to keep you pinned to the bottom.
- **Auto Bottom Mode:** On Active Anchoring enabled models, this anchoring mode automatically senses bottom composition and hardness to deliver the right amount of anchoring force every time.
- **Durable Design:** A wider profile, heavy duty reinforced pivot points and extruded aluminum design will keep Raptor on the water in the harshest conditions.
- **Retraction Force:** We designed Raptor with increased retraction force to ensure spike removal in all bottom types.
- **Multiple Control Options:** Control Raptor from anywhere on the boat using your choice of options: Wireless Remote, Foot Switch, i-Pilot or i-Pilot Link Remote, Mobile App or right from the Humminbird fish finder.
- **User-Selectable Anchoring Modes:** Separate anchoring modes for Rough Water (heavy wind and chop), Soft Bottom (muddy or silted bottom), standard (normal anchoring), and Auto-Bottom Mode on Active Anchoring equipped models which automatically delivers the ideal anchoring force by sensing bottom hardness.
- **Indestructible Anchoring Spike:** Strong and flexible composite anchor spike backed with a lifetime guarantee.
- **Auto Up/Down:** Automatically deploy or retract your Raptor with the push of a button; no need to hold the button down.
- **Saltwater-Tough Engineering:** Keeps Raptor safe from the corrosive effects of saltwater.



RAPTOR BASE MODELS

Order No.	Mfg. No. / Description	List Price
477219	(1810600) Length 8' Black Model	\$1,699.99 Z0-6027210
477221	(1810601) Length 8' Silver Model	\$1,699.99 Z0-6027210

RAPTOR MODELS WITH ACTIVE ANCHORING

- **Active Anchoring:** This revolutionary anchoring technology continuously monitors anchoring force and adjusts to keep you pinned to the bottom.

Order No.	Mfg. No. / Description	List Price
477220	(1810620) Length 8' Black Model	\$1,899.99 Z0-1712410
477222	(1810621) Length 8' White Model	\$1,899.99 Z0-1712410
477224	(1810622) Length 8' Red Model	\$1,899.99 Z0-1712410
477226	(1810623) Length 8' Silver Model	\$1,899.99 Z0-1712410
477228	(1810630) Length 10' Black Model	\$2,099.99 Z0-7317510
477230	(1810631) Length 10' White Model	\$2,099.99 Z0-7317510
477232	(1810632) Length 10' Red Model	\$2,099.99 Z0-7317510
477234	(1810633) Length 10' Silver Model	\$2,099.99 Z0-7317510

Minn Kota Raptor Wireless Footswitch - Bluetooth



- Raptor wireless foot switch allows for hands free control of your Raptor.
- Control one or two Raptors independently or simultaneously.
- Foot switch is waterproof, includes LED indicator lights and has an easy access battery compartment.
- Features:
 - Enable or disable Active Anchoring
 - Anchor mode selection of Auto-Bottom, Standard, Rough Water or Soft Bottom
 - Change deployment and retraction speed
 - Selection and control of single or dual Raptors
 - LED display of anchor mode for single or dual Raptors.
 - Modular deck mount for easy removal and storage.
 - Automatic up/down.
- Battery included.

Order No.	Mfg. No. / Description	List Price
477236	(1810258)	\$187.49 D0-9994100

Minn Kota Raptor Wireless Stomp Switch - Bluetooth



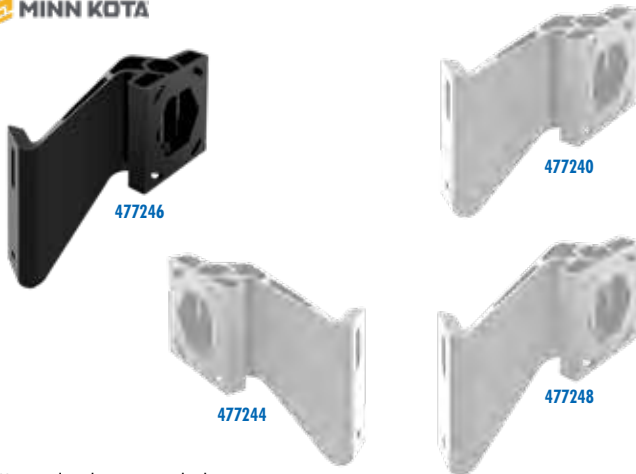
- Allows for hands free control of your Minn Kota shallow water anchor.
- Control one or two anchors independently or simultaneously.
- Large target, individually mountable arrow indicators conserve space.
- Automatic Up/Down.
- Battery removal and installation can be completed without removal of mounting hardware.
- Waterproof.
- Includes batteries and necessary mounting hardware.
- Requires Talon software version 1.460 or newer, or Raptor software version 1.210 or newer. Update your software at minnkotamotors.com/software.

Order No.	Mfg. No. / Description	List Price
477235	(1810253)	\$114.59 D0-7619000

SPECIAL HANDLING MAY APPLY



Minn Kota Raptor Jack Plate Adapter Brackets



- Mounts directly to your jack plate.
- Lightweight, single-piece aluminum construction for superior strength.
- Powder coated exterior resists corrosion in all environments and applications.
- Includes stainless steel mounting hardware.
- Slotted mounting holes for position adjustment.

STARBOARD SIDE

Order No.	Mfg. No. / Description	Rise	Color	List Price	Part No.
477238	(1810360) Setback: 2"	Rise: 4"	Black	\$311.29	D0-3094200
477240	(1810365) Setback: 2"	Rise: 4"	White	\$311.29	D0-3094200
477246	(1810362) Setback: 2"	Rise: 6"	Black	\$311.29	D0-3094200
477248	(1810367) Setback: 2"	Rise: 6"	White	\$311.29	D0-3094200
477270	(1810382) Setback: 5"	Rise: 4"	White	\$351.69	D0-5318200
477274	(1810380) Setback: 5"	Rise: 4"	Black	\$351.69	D0-5318200
477282	(1810386) Setback: 8"	Rise: 6"	White	\$401.89	D0-1512300
477284	(1810384) Setback: 8"	Rise: 6"	Black	\$461.69	D0-5396300

PORT SIDE

Order No.	Mfg. No. / Description	Rise	Color	List Price	Part No.
477242	(1810361) Setback: 2"	Rise: 4"	Black	\$311.29	D0-3094200
477244	(1810366) Setback: 2"	Rise: 4"	White	\$311.29	D0-3094200
477250	(1810363) Setback: 2"	Rise: 6"	Black	\$311.29	D0-3094200
477252	(1810368) Setback: 2"	Rise: 6"	White	\$311.29	D0-3094200
477272	(1810383) Setback: 5"	Rise: 4"	White	\$351.69	D0-5318200
477276	(1810381) Setback: 5"	Rise: 4"	Black	\$351.69	D0-5318200
477278	(1810385) Setback: 8"	Rise: 6"	Black	\$401.89	D0-1512300
477280	(1810387) Setback: 8"	Rise: 6"	White	\$401.89	D0-1512300

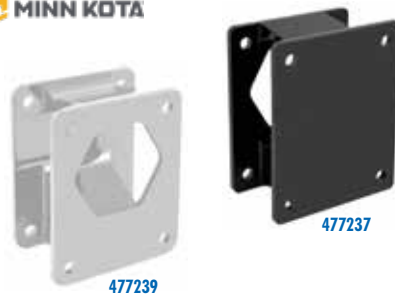
Minn Kota Raptor Sandwich Brackets - Dual



- Mounts between your jack plate and transom or between the outboard and transom, for use in both port and starboard Raptor mounting applications.
- Allows installation of jack plate brackets without a jack plate.
- Lightweight, single-piece aluminum construction for superior strength.
- Powder coated exterior resists corrosion in all environments and applications.
- Includes stainless steel mounting hardware.
- Slotted mounting holes for position adjustment.

Order No.	Mfg. No. / Description	List Price	Part No.
477262	(1810388) Black	\$139.69	D0-5711100
477264	(1810389) White	\$139.69	D0-5711100

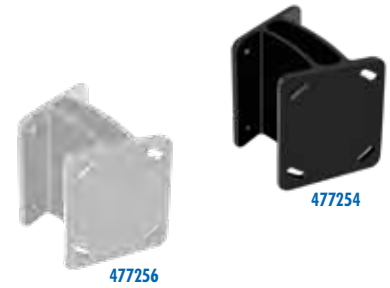
Minn Kota Raptor Setback Brackets



- Provides 3" of additional setback to all mounting applications where specific clearances are required for Raptor Shallow Water Anchors.
- Lightweight, single-piece aluminum construction for superior strength.
- Powder coated exterior resists corrosion in all environments and applications.
- Includes stainless steel mounting hardware.

Order No.	Mfg. No. / Description	List Price	Part No.
477237	(1810370) Black	\$96.39	D0-1177000
477239	(1810375) White	\$96.39	D0-1177000

Minn Kota Raptor Direct Mount Angle Brackets



- Maximizes holding power in direct transom mounting applications by providing the optimal angle for Raptor deployment.
- Lightweight, single-piece aluminum construction for superior strength.
- Powder coated exterior resists corrosion in all environments and applications.
- Includes stainless steel mounting hardware.
- Slotted mounting holes for position adjustment.

Order No.	Mfg. No. / Description	List Price	Part No.
477254	(1810371) Black	\$105.99	D0-9748000
477256	(1810376) White	\$105.99	D0-9748000

Minn Kota Raptor Universal Jack Plate Spacers



- Mounts between your jack plate or sandwich adapter and jack plate adapter bracket.
- For use in port or starboard applications.

Order No.	Mfg. No. / Description	List Price	Part No.
477266	(1810356) Black	\$110.59	D0-7488000
477268	(1810357) White	\$110.59	D0-7488000

Minn Kota Raptor Travel Covers



FITS 8" RAPTOR MODELS

Order No.	Mfg. No. / Description	List Price	Part No.
477213	(1810350)	\$148.99	D0-9191100

FITS 10" RAPTOR MODELS

Order No.	Mfg. No. / Description	List Price	Part No.
477215	(1810351)	\$148.99	D0-9191100

- Electronics
- Trolling Motor
- Instruments
- Electrical
- Lighting
- Anchor & Dock
- Safety
- Steering, Controls
- Pumps
- Fuel System
- Seating & Pedestals
- Trailer
- Tops & Covers
- Perform.
- Propellers
- Engine & Care
- Cleaning & Care
- Paint & Paint Acc.
- Fun & Flotation
- Topside Acc.
- Cockpit & Deck
- Hardware, Fasteners
- Camouflage
- Misc.
- Comm.

- Electronics
- Trolling Motors**
- Instruments
- Electrical
- Lighting
- Anchor & Dock
- Safety
- Steering, Controls
- Pumps
- Fuel System
- Seating & Pedestals
- Trailer
- Tops & Covers
- Perform.
- Propellers
- Engine & Care
- Cleaning & Care
- Paint & Paint Acc.
- Fun & Flotation
- Topside Acc.
- Cockpit & Deck
- Hardware, Fasteners
- Camouflage
- Misc.
- Comm.

Minn Kota Talon Shallow Water Anchors with Bluetooth



- Up to 15' deep - Control more water and catch more fish with the first 15' shallow water anchor.
- Bluetooth Connectivity - Lets you control Talon from your mobile device and easily update it. Also opens up communication to other control options.
- Built-in work light - Includes blue and white light color options with three brightness settings.
- More control options - Control Panel, Wireless Foot Switch, Wireless Remote, Humminbird Connectivity, Mobile App, i-Pilot or i-Pilot Link Remote.
- Electro-Mechanical design with no hydraulics.
- User-selectable anchoring modes: Auto-Drive Mode, Soft Bottom Mode and Rough Water Mode.
- Auto up/down feature.
- Fast, vertical deployment: Deploys vertically in three stages.
- 2x anchoring force: Talon is built with double the force of the competition to lock you into your spot with unparalleled strength and security.
- Built-in wave absorption: Talon allows your boat to move up or down without affecting the anchor.
- LED depth indicator: Track anchor depth at a glance, each light indicating two feet of depth.
- Deployment notification alarm.
- Two wireless remotes and a dash mount holder, come standard.
- Triple debris shields.
- Versatile adjustments: Talon's Quick Release bracket enables up and down adjustment, 30° of pivoting and easy removal when Talon's not in use.
- Saltwater tested.

Order No.	Mfg. No. / Description	List Price	
477184	(1810440) Length 10' Red Model	\$2,015.19	D0-5121610
477186	(1810441) Length 10' Blue Model	\$2,015.19	D0-5121610
477188	(1810442) Length 10' Black Model	\$2,015.19	D0-5121610
477190	(1810443) Length 10' Silver with Black Cover Model	\$2,015.19	D0-5121610
477194	(1810445) Length 10' White Model	\$2,015.19	D0-5121610
477196	(1810450) Length 12' Red Model	\$2,299.99	Z0-6274610
477198	(1810451) Length 12' Blue Model	\$2,299.99	Z0-6274610
477200	(1810452) Length 12' Black Model	\$2,299.99	Z0-6274610
477202	(1810453) Length 12' Silver with Black Cover Model	\$2,299.99	Z0-6274610
477206	(1810455) Length 12' White Model	\$2,299.99	Z0-6274610
477208	(1810462) Length 15' Black Model	\$2,699.99	Z0-5733910
477210	(1810463) Length 15' Silver with Black Cover Model	\$2,699.99	Z0-5733910

MAP PRICE

Minn Kota Talon Wireless Foot Switch



- Control Talon from the bow, with full command of stow, deploy, anchoring modes and work light.

Order No.	Mfg. No. / Description	List Price	
477218	(1810257)	\$177.89	D0-1324100

Minn Kota Talon Wireless Stomp Switch - Bluetooth



- Allows for hands free control of your Minn Kota shallow water anchor.
- Control one or two anchors independently or simultaneously.
- Large target, individually mountable arrow indicators conserve space.
- Automatic Up/Down.
- Battery removal and installation can be completed without removal of mounting hardware.
- Waterproof.
- Includes batteries and necessary mounting hardware.
- Requires Talon software version 1.460 or newer. Update your software at minnkotamotors.com/software.

Order No.	Mfg. No. / Description	List Price	
477235	(1810253)	\$114.59	D0-7619000

Minn Kota Talon Tilt Bracket



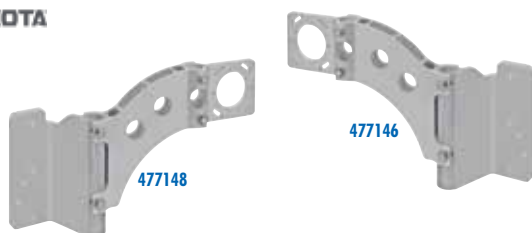
- Easy-tilt action accommodates for low clearance areas and boat storage.
- Marine-grade, anodized aluminum construction for strength and durability.
- Adjustable deck support provides stability while tilting.
- Requires use of a Talon Adapter Bracket - not intended for use with Talon direct-mounted to hull of boat.
- Designed for temporary clearance - not intended for transport (on water or trailering).
- Stainless steel hardware and Talon crutch included.
- Fits 8', 10' and 12' Talon Models.

Order No.	Mfg. No. / Description	List Price	
477138	(1810222)	\$247.09	D0-7679100

SPECIAL HANDLING MAY APPLY



Minn Kota Talon Sandwich Adapter Brackets



- With unparalleled strength and an innovative modular design, mount Talon between your jack plate and transom or between the outboard and transom.
- Keep Talon locked on your boat in any condition.

Order No.	Mfg. No. / Description	List Price
477146	(1810302) Setback: Port	\$444.59 D0-7655300
477148	(1810303) Setback: Starboard	\$444.59 D0-7655300

Minn Kota Talon Pontoon Performance Kit



- Compatible with 8', 10' and 12' Talon models.
- Add-on performance kit for 477149 (1810225) Talon Edge Mount Bracket.
- Provides increased strength and rigidity for larger or heavier pontoon boats.
- Contains additional under deck support bracket and two spanner plates.

Order No.	Mfg. No. / Description	List Price
477098	(1810226)	\$150.09 D0-7002100

Minn Kota Talon Setback Bracket



- Provides 6" of additional setback for direct transom mount application only.
- Mounting hardware included.
- Dimensions: 7-1/4" x 7" x 5".

Order No.	Mfg. No. / Description	List Price
477086	(1810220)	\$70.09 D0-7065000

Lewmar Shallow Water Anchors



- Designed for waters up to 8' deep.
- Ideal for anglers.
- Easy to install, this anchor is compatible with powerboats under 30' and can be conveniently operated by remote control.
- Takes up less space: With no hydraulic pump and hoses to worry about, the shallow water anchor uses less space.
- Easy to remove when trailering or not in use.
- Wake dampening/mitigating spike.
- Powder coated aluminum finish.

Order No.	Mfg. No. / Description	List Price
554890	(69600943) White	\$1,649.09 F0-6345110
554895	(69600944) Black	\$1,649.09 F0-6345110

Minn Kota Talon Jackplate Adapter Bracket - Port/Starboard



- With unparalleled strength and an innovative modular design, mount Talon directly to the side of your jack plate, on either the port or starboard side of your boat.
- Keep Talon locked on your boat in any condition.

Order No.	Mfg. No. / Description	List Price
477145	(1810340)	\$450.29 D0-3206300

Minn Kota Talon Pontoon Edge Mount Kit



- Basic pontoon mounting kit for Talon Shallow Water Anchors.
- Has a deck edge-mount design to fit most pontoon styles.
- Contains edge mount Talon bracket, under-deck support bracket and hardware.

Order No.	Mfg. No. / Description	List Price
477149	(1810225)	\$250.09 D0-7000200

Minn Kota Talon Quick Release Disconnect Plug



- This heavy duty, waterproof connector features an all-inclusive screw-lock design.
- For those who want to be able to easily remove and replace Talon for storage or security.
- 3 Prongs.

Order No.	Mfg. No. / Description	List Price
477089	(1810244)	\$93.89 D0-1157000

Panther King Pin Anchor Pole



- 2-piece poles featuring a pool-cue style stainless steel butt collar for quick breakdown and easy storage or transport.
- Constructed of 3/4" diameter, high-impact fiberglass.
- Equipped with molded foam grips and stainless steel tips to protect the pole while allowing easy bottom penetration.
- Rubber storage clips with mounting screws included.
- Length 12'.
- Black.

Order No.	Mfg. No. / Description	List Price
1940010	(KPP120B)	\$137.99 F0-9569000

Electronics

Trolling Motors

Instruments

Electrical

Lighting

Anchor & Dock

Safety

Steering, Controls

Pumps

Fuel System

Seating & Pedestals

Trailering

Tops & Covers

Perform.

Propellers

Engine & Care

Cleaning & Care

Paint & Paint Acc.

Fun & Flotation

Topside Acc.

Cockpit & Deck

Hardware, Fasteners

Camouflage

Misc.

Comm.

T-H Marine G-Force® Eliminator™ Trolling Motor Prop Nuts



FITS MOTORGUIDE

Order No.	Mfg. No. / Description	List Price
642660	(GFELMGBKDP) Black	\$78.09 F0-6645000

FITS MINN KOTA 80, 101, 112

Order No.	Mfg. No. / Description	List Price
642668	(GFELMKBKDP) Black	\$78.09 F0-6645000
642670	(GFELMKBUDP) Blue	\$78.09 F0-6645000
642672	(GFELMKCDP) Clear Silver	\$78.09 F0-6645000
642674	(GFELMKRDP) Red	\$78.09 F0-6645000

FITS MINN KOTA 35-70

Order No.	Mfg. No. / Description	List Price
642676	(GFELMKSBDP) Black	\$78.09 F0-6645000
642682	(GFELMKSRDP) Red	\$78.09 F0-6645000

- Machined from 6061 Billet Aluminum.
- Anodized protected.
- No tools needed.
- Wider contact area for a more stable prop.
- It acts as a heat sink and has built-in cooling ports that reduce the operating temperature for longer battery and trolling motor life.
- Made to fit most Minn Kota and MotorGuide trolling motors.
- Comes in an assortment of colors to provide a sleek, matching aesthetic.
- O-ring dampens noise/vibration and secures nut.
- Designed and made in the U.S.A. Patent pending.
- Please Note: Will not work with Kipawa and Hydrilla Hacker Props.

Electronics

Trolling Motors

Instruments

Minn Kota Stabilizer Kit



- Reduces motor bounce in the stowed position.
- Absorb vibrations to protect motor shaft.
- Folds down when not in use.
- Multiple mounting orientations to fit your boat configuration.
- Easily removeable, leaves only a low profile base.
- Stabilizer shaft can be cut to fit.
- Multi-position strap adjusts to accommodate all shaft sizes.
- Includes Stainless steel mounting hardware.
- Compatible with QUEST Series RT Instinct, Ulterra, RT Terrova, Terrova and Ulterra, Riptide Ulterra, Terrova, Riptide Terrova, Riptide ST, PowerDrive, Riptide PowerDrive, PowerDrive V2, Riptide SP and PowerDrive Pontoon.

Electrical

Lighting

Anchor & Dock

Safety

Steering, Controls

Pumps

Fuel System

Seating & Pedestals

Trailing

T-H Marine TROLL-TAMER® Trolling Motor Stabilizer Locks



- Machined from 300 stainless steel.
- Designed to securely hold the trolling motor in place to prevent damage to the trolling motor and boat.
- Locking pin with quick release toe kick base.
- Models, RMC-108-DP and RMC-109-DP, feature a clamp on shaft bracket to work with the latest in digital, wireless bow mount trolling motors, including Minn Kota Terrova, Auto Pilot, Riptide models & MotorGuide Xi5.

Tops & Covers

Perform.

Propellers

Engine & Care

Cleaning & Care

Paint & Paint Acc.

Fun & Flotation

Topside Acc.

Cockpit & Deck

Hardware, Fasteners

Camouflage

Misc.

Comm.

FITS MINN KOTA TERROVA, AUTO PILOT AND MOTORGUIDE Xi5

Order No.	Mfg. No. / Description	List Price
641872	(RMC-108-DP) Spacing: 5" to 8"	\$198.49 F0-4983100
641873	(RMC-109-DP) Spacing: 8" to 12"	\$210.59 F0-1474100

FITS MINN KOTA FORTEX, ULTREX

Order No.	Mfg. No. / Description	List Price
6400262	(RMC101FMK-DP) Spacing: 5" to 8"	\$168.99 F0-9281100

FITS MINN KOTA MAXXUM

Order No.	Mfg. No. / Description	List Price
6400263	(RMC105FMK-DP) Spacing: 2-3/4" to 4-1/2"	\$168.99 F0-9281100

Minn Kota Bow Mount Stabilizer Kit (MKA-50)



- Attaches to the left or right side of bowguard.
- Pivots into vertical position and rests on the boat deck when motor is stowed.
- Rotates in the horizontal position with bowguard when the motor is deployed.
- Includes rubber bumper to protect deck finish.
- Stainless steel hardware tested for saltwater use.
- Fits any Ultrex, Fortrex or Riptide Fortrex (SF) bow-mount trolling motor.

Order No.	Mfg. No. / Description	List Price
476431	(1862050)	\$55.09 D0-7044000

RAM Trolling Motor Stabilizers



- The RAM Tough-Claw is the perfect mounting base for quick and easy tool-less installation and removal on round, square, odd shaped rails, and bars.
- Can be converted into the most versatile mounting option for motor stabilizers.
- Simply tighten the grip of the Tough-Claw attached to the motor stabilizer and attach the drill-down base to the most effective location on the vessel to achieve the perfect mount.
- Ball size: 1-1/2" - C Size.

Order No.	Mfg. No.	Model	Clamp Range	List Price
2631208	(RAP-400-202)	Tough-Claw	.625" - 1.14"	\$89.49 Z0-8316000
672010	(RAM-108)	Strap Hose Clamp	1" - 2.1"	\$67.99 Z0-8764000
2630106	(RAM-108-D)	Strap Hose Clamp	1" - 2.1"	\$90.49 Z0-2636000

MAP PRICE

T-H Marine Bounce Buster Coaster



- Fits Minn Kota Bow Mount Stabilizer Rods.
- Protects decks from Bounce Buster damage.
- Protects carpeted decks from damage

Order No.	Mfg. No. / Description	List Price
641874	(BBC-1-DP)	\$9.99 F0-9960000

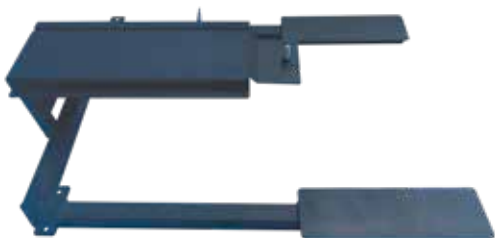
JIF Marine Trolling Motor Bracket



- Heavy duty aluminum construction.
- Universal mounting bracket is designed to accommodate all bow mount trolling motors.
- Adapts to fit on both bow and stern applications.
- 6" wide by 16" long and adjusts from 3-1/8" to 4" in height.

Order No. Mfg. No. / Description List Price
2100060 (EBG) **\$51.39** FO-7953000

B+S Ez Mount Trolling Motor Mount



- Trolling motor mount for pontoon boats.
- Bracket mounts to the bottom of the deck.

Order No. Mfg. No. / Description List Price
500695 (BSEASYMOUNT) **\$601.09** EO-2805400

Marpac Trolling Motor Tie Down Strap



- Keep the trolling motor secured from bouncing when traveling in rough waters or trailering to and from locations.
- Hook and loop design.
- Heavy duty webbing.
- Adjustable.

Order No. Description List Price
7-52640 Trolling Motor Tie Down Strap **\$6.19** GO-5140000

T-H Marine G-Force® Equalizer™ Trolling Motor Lift Assist



- Reduce the lifting weight of your trolling motor by as much as 50%.
- Consists of two air pistons that attach to almost any MotorGuide Gator Mount to provide effortless lifting in-and-out of the water.
- Includes: 2x Equalizer Trolling Motor Assist Air Pistons, drilling template, marine-grade stainless steel hardware, instructions, picture of the mount and basic guidelines and Equalizer decal.
- For MotorGuide - Black.

Order No. Mfg. No. / Description List Price
642684 (GFEQMGBKDP) **\$183.69** FO-8582100

**LIMITED
QUANTITIES**

T-H Marine Trolling Motor Mount



- Designed for clamp-on type electric trolling motors.
- Made of cast aluminum with seasoned marine wood mounting block.
- Maximum trolling motor thrust of 36 pounds.
- Motor must be removed and stowed before operating boat or trailering.
- Not designed for outboards of any horsepower.

Order No. Mfg. No. / Description List Price
641109 (TMM-1-DP) **\$82.59** FO-1875000

R&R Design Trolling Motor Bracket



- Allows the motor to slide backward, preventing any contact with the trailer during loading. This feature ensures the safety of your trolling motor and trailer while providing ease of use.
- The bracket includes pull pins that allow for complete detachment, making overnight storage a breeze and protecting your equipment from theft or vandalism.
- For added security, the bracket also features machined holes for pad-lock application.

Order No. Mfg. No. / Description List Price
2003677 (13021065) Standard Trolling Motors **\$269.49** D0-9551200
2003679 (13021254) Quest Trolling Motors **\$315.89** D0-1725200

**NEW
PRODUCT**

Rod Saver Trolling Motor Tie Down



- A must for every trolling motor.
- Keeps motor firmly mounted to the boat and not the bottom of the lake.
- Most importantly, it keeps the trolling motor secure with less bouncing while traveling down the lake.
- Adjusts from 9" to 18".

Order No. Mfg. No. / Description List Price
2003830 (TMS10) **\$19.99** FO-9931000

Minn Kota Extension Handles



- Provides easier steering and speed control for hand controlled motors.
- These extension handles let you fish more comfortably and attach easily to your trolling motor's tiller handle.

Order No. Mfg. No. / Description List Price
476615 (1854101) MKA-18 Length 18" **\$30.09** D0-7042000
476603 (1854100) MKA-7 Length 30" **\$39.59** D0-7613000

Electronics

Trolling Motors

Instruments

Electrical

Lighting

Anchor & Dock

Safety

Steering, Controls

Pumps

Fuel System

Seating & Pedestals

Trailering

Tops & Covers

Perform.

Propellers

Engine & Care

Cleaning & Care

Paint & Paint Acc.

Fun & Flotation

Topside Acc.

Cockpit & Deck

Hardware, Fasteners

Camouflage

Misc.

Comm.

Minn Kota Cable and Handle (MKA-49)



- For Minn Kota cable steer bow mount motors, this replacement handle features an ergonomic soft-grip design with an ultra-strong, abrasion-resistant, coated stainless steel braided cable.
- Compatible with cable steer bow mount motors: Fortrex, Maxxum, Edge, Riptide SF, Riptide SM and Riptide SE.

Order No.	Mfg. No. / Description	List Price	
476430	(1854125)	\$60.09	D0-7084000

Marpac Trolling Motor Lift Cord



- Great for backup.
- High impact nylon 3/16" double braid cord.
- UV inhibitor.
- Length 36".

Order No.	Description	List Price	
7-52245	Trolling Motor Lift Cord	\$6.39	G0-8240000

Minn Kota Rope and Handle (MKA-45)



- Features an ergonomic soft-grip design and durable, abrasion-resistant 48" nylon rope.
- Compatible with Maxxum and Edge bow mount trolling motors.

Order No.	Mfg. No. / Description	List Price	
477013	(1854120)	\$11.99	D0-9590000

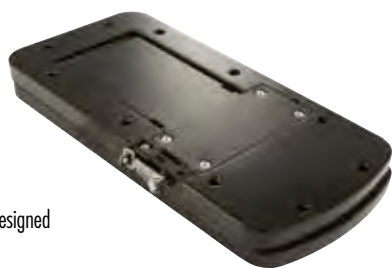
Rod Saver Trolling Motor Cable for Trolling Motor Rope



- Never worry about that trolling motor pull rope breaking again.
- This stainless steel vinyl coated braided cable is used to replace the manufacturer's pull rope on your trolling motor.
- Will not rust, break or rot.
- It comes with complete, easy to follow installation instructions.

Order No.	Mfg. No. / Description	List Price	
2003835	(TR)	\$19.59	F0-1731000

MotorGuide XI Series Quick-Release Bracket



- Low profile and small footprint is designed to save you space.
- Black aluminum.

Order No.	Mfg. No. / Description	List Price	
7000024	(8M0092064)	\$146.69	F0-8620100

T-H Marine G-Force® Trolling Motor Replacement Handle and Cable



- This trolling motor replacement release and lift system is a rugged, nylon jacketed stainless steel cable with a large comfortable cushioned grip handle.
- Fits most models and makes.
- Comes complete with a hook-n-loop strap to secure to the motor shaft while underway.

CLAMP ON FOR WIRELESS MOTOR

- A G-Force handle for the latest in digital/wireless trolling motors that attaches with a clamp on the shaft of the trolling motor.
- This clamp on model is designed to fit Minn Kota Terrova and Riptide, as well as the MotorGuide Xi5.

Order No.	Mfg. No. / Description	List Price	
642690	(GFHCA1RDP)	\$83.79	F0-5685000

REPLACEMENT TROLLING MOTOR CORD

Order No.	Mfg. No. / Description	List Price	
642647	(GFH-1R-DP) Red	\$67.09	F0-6964000
642650	(GFH-1G-DP) Black	\$64.49	F0-4154000

Bob's Marchine Shop "The Big D" Trolling Motor Handle



- Stronger than stock.
- Comfort grip handle.
- Large D shape that fits your hands! No more grabbing with only your finger tips.
- Cable molded into handle so can't break out.
- 3 different stainless steel cable clamps allowing installation on 99.9% of all trolling motors.

Order No.	Mfg. No. / Description	List Price	
304100	(315-200000)	\$34.69	E0-2062000

R & R Designs Foot Pedal Recess



- High quality trolling motor foot pedal recess.
- Mount lip dimensions: 19-3/8" L x 11-15/16" W.
- Dimensions: 4-1/8" D x 17-1/4" L x 8-7/8" W.

Order No.	Mfg. No. / Description	List Price	
2003680	(RR-TMP)	\$93.79	F0-5656000

Aronda Foot Pedal Recesses

- Finally an economical aftermarket foot pedal recess for the deck of your Bass Boat!
- This recess allows more even weight distribution while fishing for less stress on the knees and back.
- One size fits most trolling motor foot pedals.
- Fiberglass construction with 1/2" plywood bottom reinforcing for strength and durability.
- White.

LIMITED QUANTITIES

Order No.	Mfg. No. / Description	List Price	
2000027	(RFP-W)	\$63.29	F0-0344000



- Electronics
- Trolling Motors
- Instruments
- Electrical
- Lighting
- Anchor & Dock
- Safety
- Steering, Controls
- Pumps
- Fuel System
- Seating & Pedestals
- Trailing
- Tops & Covers
- Perform.
- Propellers
- Engine & Care
- Cleaning & Care
- Paint & Paint Acc.
- Fun & Flotation
- Topside Acc.
- Cockpit & Deck
- Hardware, Fasteners
- Camouflage
- Misc.
- Comm.

T-H Marine G-Force® Troll Jacket Trolling Motor Cable Organizer Sleeve



- The G-Force Troll Jacket is a 2mm neoprene trolling motor wire and cable organizer.
- It measures 60" long and includes a velcro closure.
- While wrapped, the diameter is about 1-1/2".
- For maximum compatibility for your setup, you can cut and trim the sides where your cables need to come out.

Order No. Mfg. No. / Description List Price
640954 (GFTJ-1-DP) **\$39.19** E0-9392000

Minn Kota Drift Sock-Pro



- Durable constructed Minn Kota Drift Sock slows down your drift to enable proper bait presentation over holding fish.
- Weights at the bottom and floats at the top, to allow the sock to open instantly when thrown into the water.
- 34" deep x 22" diameter.
- 4 Heavy duty 1" nylon straps.

Order No. Mfg. No. / Description List Price
M549-9300 (1865261) 420 Denier Ripstop Nylon **\$54.49** DO-9534000
2251701 (1865260) 210 Denier Ripstop Nylon **\$50.09** DO-7004000

T-H Marine Sure Foot® Trolling Motor Foot Switches



- Foot control switch for electric trolling motors.
- Rated up to 50 amps.
- Features a 15° tilt angle for easy operation.

Order No. Mfg. No. / Description List Price
640257 (FCS-1-DP) **\$39.89** F0-2972000
640258 (FCS-2-DP) With Flip Lever for Continuous "On" **\$39.39** F0-7572000

T-H Marine G-Force Grass Goat Trolling Motor Weed Guard



- Designed for heavy vegetation to prevent trolling motor clogging.
- Crafted with a genuine marine-grade starboard mounting plate.
- Includes a durable 316 stainless steel cutting blade for long-lasting use.
- The dimension for the black starboard piece at the top is 4-1/8".
- For Minn Kota (Sml). Not compatible with Minn Kota Edge Motors.

Order No. Mfg. No. / Description List Price
3420214 (GFGG-MKS-DP) **\$61.09** G1-1793000

Conductor Gauge and Circuit Breaker Sizing Table

This conductor and circuit breaker sizing table is only valid for the following assumptions:

1. No more than 2 conductors are bundled together inside of a sheath or conduit outside of engine spaces.
2. Each conductor has 105° C temp rated insulation.
3. No more than 5% voltage drop allowed at full motor power based on published product power requirements.

Courtesy of:



Motor Thrust/Model	Max Amp Draw	Circuit Breaker	Wire Extension Length				
			5 feet	10 feet	15 feet	20 feet	25 feet
30 lb.	30	50 Amp @ 12 VDC	10 AWG	10 AWG	8 AWG	6 AWG	4 AWG
40 lb., 45 lb.	42	50 Amp @ 12 VDC	10 AWG	8 AWG	6 AWG	4 AWG	4 AWG
50 lb., 55 lb.	50	60 Amp @ 12 VDC	8 AWG	6 AWG	4 AWG	4 AWG	2 AWG
70 lb.	42	50 Amp @ 24 VDC	10 AWG	10 AWG	8 AWG	8 AWG	6 AWG
80 lb.	56	60 Amp @ 24 VDC	8 AWG	8 AWG	8 AWG	6 AWG	6 AWG
101 lb.	46	50 Amp @ 36 VDC	8 AWG	8 AWG	8 AWG	8 AWG	8 AWG
Engine Mount 101	50	60 Amp @ 36 VDC	8 AWG	6 AWG	4 AWG	4 AWG	2 AWG
112 lb.	52	60 Amp @ 36 VDC	8 AWG	8 AWG	8 AWG	8 AWG	8 AWG
Engine Mount 160	116	(2) x 60 Amp @ 24 VDC	2 AWG	2 AWG	2 AWG	2 AWG	2 AWG
E-Drive	40	50 Amp @ 48 VDC	10 AWG	10 AWG	10 AWG	10 AWG	10 AWG

NOTE: Wire Extension Length refers to the distance from the batteries to the trolling motor leads. Consult website for available thrust options. Maximum Amp Draw values only occur intermittently during select conditions and should not be used as continuous amp load ratings.

- Electronics
- Trolling Motors
- Instruments
- Electrical
- Lighting
- Anchor & Dock
- Safety
- Steering, Controls
- Pumps
- Fuel System
- Seating & Pedestals
- Trailering
- Tops & Covers
- Perform.
- Propellers
- Engine & Care
- Cleaning & Care
- Paint & Paint Acc.
- Fun & Flotation
- Topside Acc.
- Cockpit & Deck
- Hardware, Fasteners
- Camouflage
- Misc.
- Comm.

Marpac Breaker Bracket and Boot



- Simplify the mounting of a trolling motor circuit breaker.
- Can be used with most either manual or automatic two prong circuit breakers.
- Included cover protects breaker terminals from the elements, reducing corrosion.

Order No.	Description	List Price	
7-1170	Breaker Bracket and Boot	\$3.69	FO-8520000

Minn Kota Circuit Breaker (MKR-27)



- Manual reset circuit breaker designed for marine environment.
- Compatible with all Minn Kota trolling motors (12-48 volt; 60 amp rating).
- Stainless steel, 1/4" studs with included protective stud insulator
- IP67 waterproof for use in fresh or salt water.
- UL1500 ignition protected.

Order No.	Mfg. No. / Description	List Price	
4771716	(1865116) Sold Each	\$46.19	D0-5963000
4771718	(1865115) Sold Bulk	\$50.09	D0-7004000

Minn Kota Motor Quick Connect Plug (MKR-20)



- Heavy duty trolling motor connector has a positive snap-lock design for 6- to 12-gauge wire.
- The kit includes two plug halves, four contacts and four solder plugs for securing wire leads into contacts (wire not included).

Order No.	Mfg. No. / Description	List Price	
4771710	(1865107)	\$40.09	D0-7023000

Minn Kota Trolling Motor Plug and Receptacle (MKR-28)



Marpac Breaker Kit



- Includes: 50 amp in-line circuit breaker, bracket and boot.
- Manual reset button.
- For use with higher amperage accessories.
- For use with 12V or 24V systems.

Order No.	Description	List Price	
7-1169	Breaker Kit	\$9.09	FO-6360000

T-H Marine Trolling Motor Circuit Breaker Kit



- Protect trolling motor from damage.
- 3' of 8 gauge wire to battery.
- Works with 12 or 24 volt motors.
- Kit includes: Mounting box, fasteners and second ring terminal for attaching trolling motor wire.
- 50 amp.

Order No.	Mfg. No. / Description	List Price	
640075	(CBBK-1-DP)	\$75.99	FO-9135000

Rig Rite Trolling Motor Quick Disconnect



- 10 gauge heavy duty connectors.
- For wiring a trolling motor where a plug and socket can't be used on small boats and canoes.

Order No.	Mfg. No. / Description	List Price	
2970400	(400)	\$28.29	G1-9381000

- Electronics
- Trolling Motors
- Instruments
- Electrical
- Lighting
- Anchor & Dock
- Safety
- Steering, Controls
- Pumps
- Fuel System
- Seating & Pedestals
- Trailering
- Tops & Covers
- Perform.
- Propellers
- Engine & Care
- Cleaning & Care
- Paint & Paint Acc.
- Fun & Flotation
- Topside Acc.
- Cockpit & Deck
- Hardware, Fasteners
- Camouflage
- Misc.
- Comm.

Marpac Trolling Motor Male Sockets - Boat Side Connector



- 8 gauge wire with attached butt connectors.
- Mounting screws included.

Order No.	Description	Connects to:	List Price	Mfg. No.
7-1304	12 volt, 2 Wires	7-1306	\$14.29	G0-7590000
7-1308	24 volt, 3 Wires	7-1310	\$16.79	G0-5211000

Marpac Trolling Motor Female Plugs - Motor Side Connector



- 8 gauge wire with attached butt connectors.

Order No.	Description	Connects to:	List Price	Mfg. No.
7-1306	12 volt, 2 Wires	7-1304	\$11.29	G0-6570000
7-1310	24 volt, 3 Wires	7-1308	\$13.79	G0-4290000

Sierra Male Boat Side Trolling Motor Plugs



- Length 6", 8 gauge.
- Includes: Butt connectors.

Order No.	Mfg. No. / Description	List Price	Mfg. No.
181052	(WH10520-1) 12 volt, 2 Wires	\$20.40	Z0-8241000
181054	(WH10540-1) 24 volt, 3 Wires	\$25.20	Z0-4671000

Sierra Female Motor Side Trolling Motor Sockets



- Length 6", 8 gauge.
- Includes: Butt connectors.

Order No.	Mfg. No. / Description	List Price	Mfg. No.
181053	(WH10530-1) 12 volt, 2 Wires	\$17.98	Z0-8521000
181055	(WH10550-1) 24 volt, 3 Wires	\$22.18	Z0-3551000

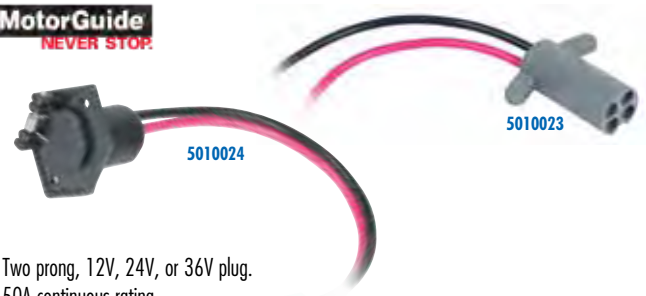
Sierra V-Groove Trolling Motor Plug and Socket



- Length 6", 8 gauge.
- Includes: Butt connectors.
- 12 volt, 2 wires.

Order No.	Mfg. No. / Description	List Price	Mfg. No.
772230	(WH10610-1) Male Boat Side Trolling Motor Plug	\$23.25	Z0-8261000
772229	(WH10600-1) Female Motor Side Trolling Motor Socket	\$20.10	Z0-7041000

MotorGuide 50A Trolling Motor Plug and Receptacle



- Two prong, 12V, 24V, or 36V plug.
- 50A continuous rating.

Order No.	Mfg. No. / Description	List Price	Mfg. No.
5010023	(8M4000953) Trolling Motor Plug	\$23.29	F0-0361000
5010024	(8M4000954) Trolling Motor Receptacle	\$23.29	F0-0361000

Rig Rite V-Groove Trolling Motor Plugs and Receptacles



WITH BUTT CONNECTORS

Order No.	Mfg. No. / Description	Gauge	Wire	List Price	Mfg. No.
2970410	(410) Male Plug	10 Gauge	2 Wire	\$19.09	G1-1421000
2970415	(415) Female Receptacle	8 Gauge	2 Wire	\$23.99	H0-9341000
2970420	(420) Male Plug	10 Gauge	3 Wire	\$24.09	G1-6651000
2970430	(430) Red Charger Male Plug	10 Gauge	2 Wire	\$19.09	G1-1421000

NO BUTT CONNECTORS

Order No.	Mfg. No. / Description	Gauge	Wire	List Price	Mfg. No.
2970425	(425) Female Receptacle	8 Gauge	4 Wire	\$32.09	G0-0512000

Rig Rite OEM Retrofit Trolling Motor Plugs and Receptacles



WITH BUTT CONNECTORS

Order No.	Mfg. No. / Description	Gauge	Wire	List Price	Mfg. No.
2970445	(445) Male Plug	10 Gauge	3 Wire	\$12.99	B0-9611000
2970455	(455) Female Receptacle	8 Gauge	3 Wire	\$13.09	B0-8711000
2970470	(470) Male Plug	10 Gauge	2 Wire	\$12.99	B0-9611000
2970475	(475) Female Receptacle	10 Gauge	2 Wire	\$12.99	B0-9611000
2970480	(480) Male Receptacle	10 Gauge	2 Wire	\$20.19	G1-2131000
2970485	(485) Female Plug	10 Gauge	2 Wire	\$18.29	G1-9811000

Electronics

Trolling Motors

Instruments

Electrical

Lighting

Anchor & Dock

Safety

Steering, Controls

Pumps

Fuel System

Seating & Pedestals

Trailer

Tops & Covers

Perform.

Propellers

Engine & Care

Cleaning & Care

Paint & Paint Acc.

Fun & Flotation

Topside Acc.

Cockpit & Deck

Hardware, Fasteners

Camouflage

Misc.

Comm.

Marpac Trolling Motor Male Plugs - Motor Side Connector



- 10 gauge wire with attached butt connectors.

Order No.	Description	Connects to:	List Price	Mfg. No.
7-1298	12 volt, 2 Wires	Connects to: 7-1296	\$9.49	GO-6360000
7-1302	24 volt, 3 Wires	Connects to: 7-1300	\$11.69	GO-3870000

Sierra Male Trolling Motor Plugs



- 10 Gauge wire with butt connector
- Ready-wired.

Order No.	Mfg. No. / Description	List Price	Mfg. No.
181048	(WH10480-1) 12 volt, 2 Wires	\$16.47	Z0-3511000
181050	(WH10500-1) 24 volt, 3 Wires	\$19.94	Z0-6931000

Marpac Trolling Motor Plug / Receptacle - 3-Prong



- 3-Prong locking plug / receptacle for trolling motors.
- 50 amps, 12/24 volt.
- Replaces: Marinc0 305CRRB and 305BP.

Order No.	Description	Boat Side	Motor Side	List Price	Mfg. No.
7-51557	Receptacle - Female			\$21.19	F0-3841000
7-51558	Plug - Male			\$21.79	F0-5251000

Minn Kota AC Power Ports



- Allows quick connection to AC extension cord.
- Uses male AC plug from charger - no cutting/splicing wires.
- Watertight cover and gasket protects AC plug against corrosion when not in use.

Order No.	Mfg. No. / Description	List Price	Mfg. No.
476588	(1865108) Black	\$17.09	D0-7631000
476590	(1865110) White	\$17.09	D0-7631000

Marpac Trolling Motor Female Sockets - Boat Side Connector



- 10 gauge wire with attached butt connectors.
- Mounting screws included.

Order No.	Description	Connects to:	List Price	Mfg. No.
7-1296	12 volt, 2 Wires	Connects to: 7-1298	\$12.39	GO-0380000
7-1300	24 volt, 3 Wires	Connects to: 7-1302	\$14.29	GO-7590000

Sierra Female Trolling Motor Sockets



- 10 Gauge wire with butt connector.
- Ready-wired.

Order No.	Mfg. No. / Description	List Price	Mfg. No.
181047	(WH10470-1) 12 volt, 2 Wires	\$19.88	Z0-2931000
181049	(WH10490-1) 24 volt, 3 Wires	\$24.01	Z0-1861000

Pro Charging Systems Onboard Charger Inlet



- Makes connecting to your charger safer and more efficient.
- Installs into console with 3 screws.
- The hollow housing holds the power cord inserted through the back.
- Just lift the front lid, pull out the cord and plug into an extension cord.
- When finished, unplug and push the plug back into the housing.
- 2.5" diameter x 1.943" deep. Requires a 1-7/8" diameter hole.
- Includes mounting screws.

Order No.	Mfg. No. / Description	List Price	Mfg. No.
284610	(90032KIT)	\$13.49	E0-2101000

Marinco On-Board Charger Inlets - Front Mount



- 15 amp, 125 volt straight blade.
- Marinco on-board charger inlets make battery charging through an on-board battery charger safer and more convenient.
- Inlets mount on the boat exterior and are hard-wired directly to the charger.
- Mounts easily to fiberglass and aluminum hulls.
- UV resistant housing/cap.

Order No.	Mfg. No. / Description	List Price	Mfg. No.
217908	(150BBI) Black	\$26.39	F0-7481000
218640	(150BBIW) White	\$26.39	F0-7481000

Electronics

Trolling Motors

Instruments

Electrical

Lighting

Anchor & Dock

Safety

Steering, Controls

Pumps

Fuel System

Seating & Pedestals

Trailering

Tops & Covers

Perform.

Propellers

Engine & Care

Cleaning & Care

Paint & Paint Acc.

Fun & Flotation

Topside Acc.

Cockpit & Deck

Hardware, Fasteners

Camouflage

Misc.

Comm.

Marinco 2-Wire ConnectPro® Charging/Trolling System

MARINCO



CONNECTPRO RECEPTACLE

- Works with 12V, 24V, or 36V 2-wire systems.
- For front mount panel installations.
- Weather resistant sealing cap.
- Drain holes in receptacle keep water away from electrical components.
- Perma-Lock screw terminals will not loosen under extreme hull vibration.
- Fits standard 1-1/8" diameter mounting hole.
- Accepts 10 and 8 AWG wire.

Order No.	Mfg. No. / Description	List Price
2460108	(12VBR52)	\$32.19 G1-2902000

CONNECTPRO PLUG

- O-ring seal for waterproof connections.
- Weather resistant plug cover.
- Ergonomic contoured grip for easy hook-up and ground blade alignment.
- Max rating is 40 amps.
- Accepts 16 to 8 AWG wire.

Order No.	Mfg. No. / Description	List Price
2460107	(12VBPS2)	\$24.99 G1-4261000

CONNECTPRO RECEPTACLE AND PLUG

Order No.	Mfg. No. / Description	List Price
2460109	(12VCP52)	\$54.39 G1-5353000

Marinco 3-Wire 70A Charging/Trolling System

MARINCO



- 70A continuous rating.
- Universal design for 2 or 3-wire configuration 12V, 24V, 12/24V, 24/36V, 36V or 48V systems.
- Floating pin design for maximum connectivity and durability.
- Accepts 8 and 6 AWG wire.

TROLLING MOTOR RECEPTACLE

- Watertight sealing cap.

Order No.	Mfg. No. / Description	List Price
700864	(12VBR53)	\$37.29 F0-0162000

TROLLING MOTOR PLUG

- Integrated strain relief.
- Keyed design with thumbprint locator.

Order No.	Mfg. No. / Description	List Price
700852	(12VBPS3)	\$31.99 F0-9322000

TROLLING MOTOR PLUG AND RECEPTACLE

Order No.	Mfg. No. / Description	List Price
700825	(12VCP53)	\$63.79 F0-5644000

Marinco ConnectCharger™ Inlet - Universal Mount

MARINCO



- A receptacle designed to accept plug-in Guest ConnectCharge on-board battery chargers.
- This model features universal mounting: Use three screws through the faceplate to mount it from the front or use a threaded locking ring to mount it to the dash from the rear.
- The watertight lid snaps closed to protect the AC plug.
- Black.

Order No.	Mfg. No. / Description	List Price
217910	(150CCI)	\$24.59 F0-1271000

Marinco 3-Wire ConnectPro® Charging/Trolling System

MARINCO



CONNECTPRO RECEPTACLE

- Universal design for 2 or 3-wire configuration 12V, 24V, 12/24V, 24/36V or 36V systems.
- Watertight sealing cap.
- Drain holes in receptacle keep water away from electrical components.
- Perma-Lock screw terminals will not loosen under extreme hull vibration.
- Fits standard 1-1/8" diameter mounting hole.
- Easy to install, with supplied mounting plate for front panel installation, or locking ring for rear access installation.
- Accepts 10 and 8 AWG wire.
- Max rating is 40 amps.

Order No.	Mfg. No. / Description	List Price
217941	(12VBR) Includes Mounting Plate	\$31.39 F0-7912000

CONNECTPRO PLUG

- O-ring seal for waterproof connections.
- Weather resistant plug cover.
- Ergonomic contoured grip for easy hook-up and ground blade alignment.
- Accepts 16 to 8 AWG wire.
- Max rating is 40 amps.

Order No.	Mfg. No. / Description	List Price
217940	(12VBP)	\$24.29 F0-0071000

6 GAUGE CONNECTPRO WIRE RECEPTACLE ADAPTER

- Allows 6 AWG wire connection to ConnectPro receptacle.

Order No.	Mfg. No. / Description	List Price
217617	(12VBRAD)	\$25.09 F0-6571000

CONNECTPRO RECEPTACLE AND PLUG

Order No.	Mfg. No. / Description	List Price
217942	(12VCP)	\$52.89 F0-2073000

Electronics

Trolling Motors

Instruments

Electrical

Lighting

Anchor & Dock

Safety

Steering, Controls

Pumps

Fuel System

Seating & Pedestals

Trailering

Tops & Covers

Perform.

Propellers

Engine & Care

Cleaning & Care

Paint & Paint Acc.

Fun & Flotation

Topside Acc.

Cockpit & Deck

Hardware, Fasteners

Camouflage

Misc.

Comm.

Electronics

Trolling Motors

Instruments

Electrical

Lighting

Anchor & Dock

Safety

Steering, Controls

Pumps

Fuel System

Seating & Pedestals

Trailing

Tops & Covers

Perform.

Propellers

Engine & Care

Cleaning & Care

Paint & Paint Acc.

Fun & Flotation

Topside Acc.

Cockpit & Deck

Hardware, Fasteners

Camouflage

Misc.

Comm.

Marinco 4-Wire 12/24V Locking Charging/Trolling System

The 4-wire trolling/charging system eliminates the need for a charge/run switch. Install the receptacle on the boat, mount the black trolling motor plug on the trolling motor, and the red charger plug on the leads of the battery charger. Simply plug in the black plug to troll, or plug in the red plug to charge.

Marinco Charger Plug (Male)

MARINCO



- Accepts up to 10 AWG wire.
- Red.

Order No.	Mfg. No. / Description	List Price
217972	(2018BP-12)	\$34.59 F0-1242000

Marinco Trolling Motor Plug (Male)

MARINCO



- Connects to trolling motor.
- Jumped internally to supply 12V and 24V power to the trolling motor when plugged into the receptacle.
- Accepts up to 8 AWG wire. Max rating is 60 amps.
- Black.

Order No.	Mfg. No. / Description	List Price
217984	(2018BP-24)	\$32.89 F0-2032000

Marinco Receptacle and Bracket

MARINCO



- Spring loaded flip lid cover and receptacle, pre-assembled.

Order No.	Mfg. No. / Description	List Price
217996	(2018BR-MB)	\$99.09 F0-6396000

Marinco Receptacle

MARINCO



- Glass reinforced corrosion resistant nylon.
- Accepts 8 AWG stranded wire or up to 6 AWG with spade terminals.

Order No.	Mfg. No. / Description	List Price
217960	(2018BR)	\$68.79 F0-5184000

Marinco Bracket

MARINCO



- Spring loaded flip lid cover without receptacle.

Order No.	Mfg. No. / Description	List Price
217958	(2018MB)	\$37.09 F0-6952000

NEW PRODUCT

Marinco Trolling/Charging System Package

MARINCO



- Package includes: **217972** (2018BP-12), **217984** (2018BP-24) and **217996** (2018BR-MB).
- Enclosed in one package and economically priced.

Order No.	Mfg. No. / Description	List Price
218001	(2018PKG)	\$136.39 F0-7459000

Marpac Trolling Motor Plug / Receptacle - 4-Prong

MARPAC



- 4-Prong locking plug / receptacle for trolling motors.
- 50 amps, 12/24 volt.
- Replaces: Marinco 2018BR and 2018BP-24.

Order No.	Description	Boat Side	Motor Side	List Price
7-51555	Receptacle - Female			\$15.19 F0-3601000
7-51556	Plug - Male			\$16.69 F0-8611000

Minn Kota Battery Power Center

MINN KOTA



- For small boat, transom applications, these easy access external battery terminals allow trolling motor leads and charger leads to be connected without opening the box.
- Built-in battery meter displays current "state of charge".
- Fits group 24 and 27 size batteries.
- Includes two 12 volt accessory plugs, and two manual reset circuit breakers (10 amp for the accessory plugs and 60 amp breaker for the trolling motor).

Order No.	Mfg. No. / Description	List Price
476718	(1820175)	\$100.09 D0-7008000

Minn Kota Battery Charger Extension Cable (MK-EC-15)

MINN KOTA



- Use this 15' extension cable when your standard charger cables don't reach the bow, center or transom battery compartments.
- The cable features WAGO Wall-Nut quick connectors (UL listed) and fused (30 amp) positive and negative leads.

Order No.	Mfg. No. / Description	List Price
476594	(1820089)	\$40.09 D0-7023000